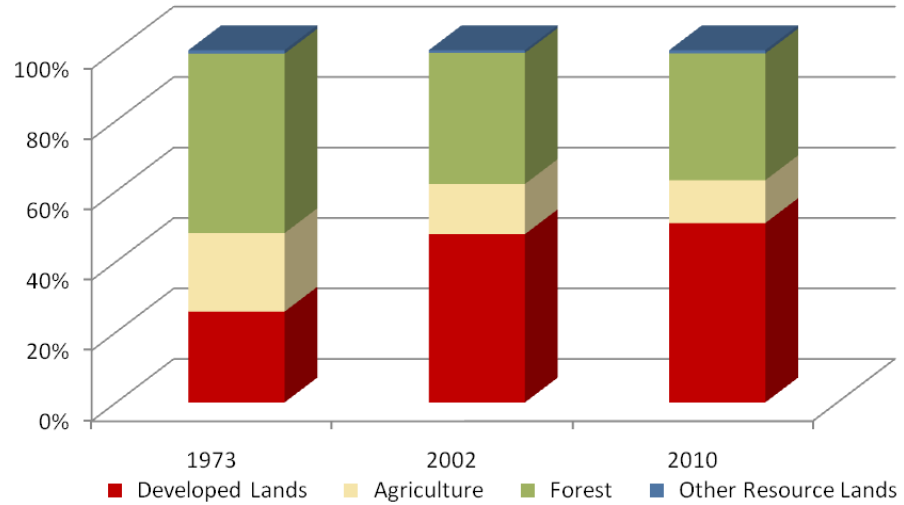


Anne Arundel County

	Land Use in Acres		Land Use Change	
	2002 ³ Acres	2010 ² Acres	2002-2010 Acres	Percent
Very Low Density Residential ¹	11,696	12,535	840	7.2%
Low Density Residential	39,435	42,321	2,886	7.3%
Medium Density Residential	33,438	35,056	1,618	4.8%
High Density Residential	7,116	8,355	1,240	17.4%
Commercial	11,074	11,638	565	5.1%
Industrial	3,683	4,214	531	14.4%
Other Developed Lands/ Institutional/Transportation ¹	20,328	21,045	717	3.5%
Total Developed Lands⁵	126,769	135,166	8,397	6.6%
Agriculture	37,831	32,278	-5,553	-14.7%
Forest	98,773	95,534	-3,239	-3.3%
Extractive/Barren/Bare	440	775	335	76.1%
Wetland	1,624	1,685	60	3.7%
Total Resource Lands⁵	138,668	130,271	-8,397	-6.1%
Total Land	265,437	265,437		
Water	113,916	113,916		

	Land Use in Acres			Land Use Change
	1973 ⁴	2002 ³	2010 ^{1,2}	1973-2010 Acres
All Residential	49,240	91,685	98,268	49,029
All Non-Residential	19,239	35,085	36,898	17,659
Total Developed Lands⁵	68,479	126,769	135,166	66,687
Total Resource Lands⁵	197,145	138,668	130,271	-66,874
Total Land	265,624	265,437	265,437	
Water	113,730	113,916	113,916	

Land Use Change 1973 - 2010



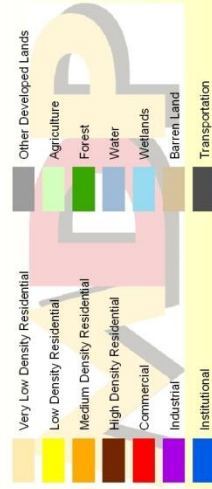
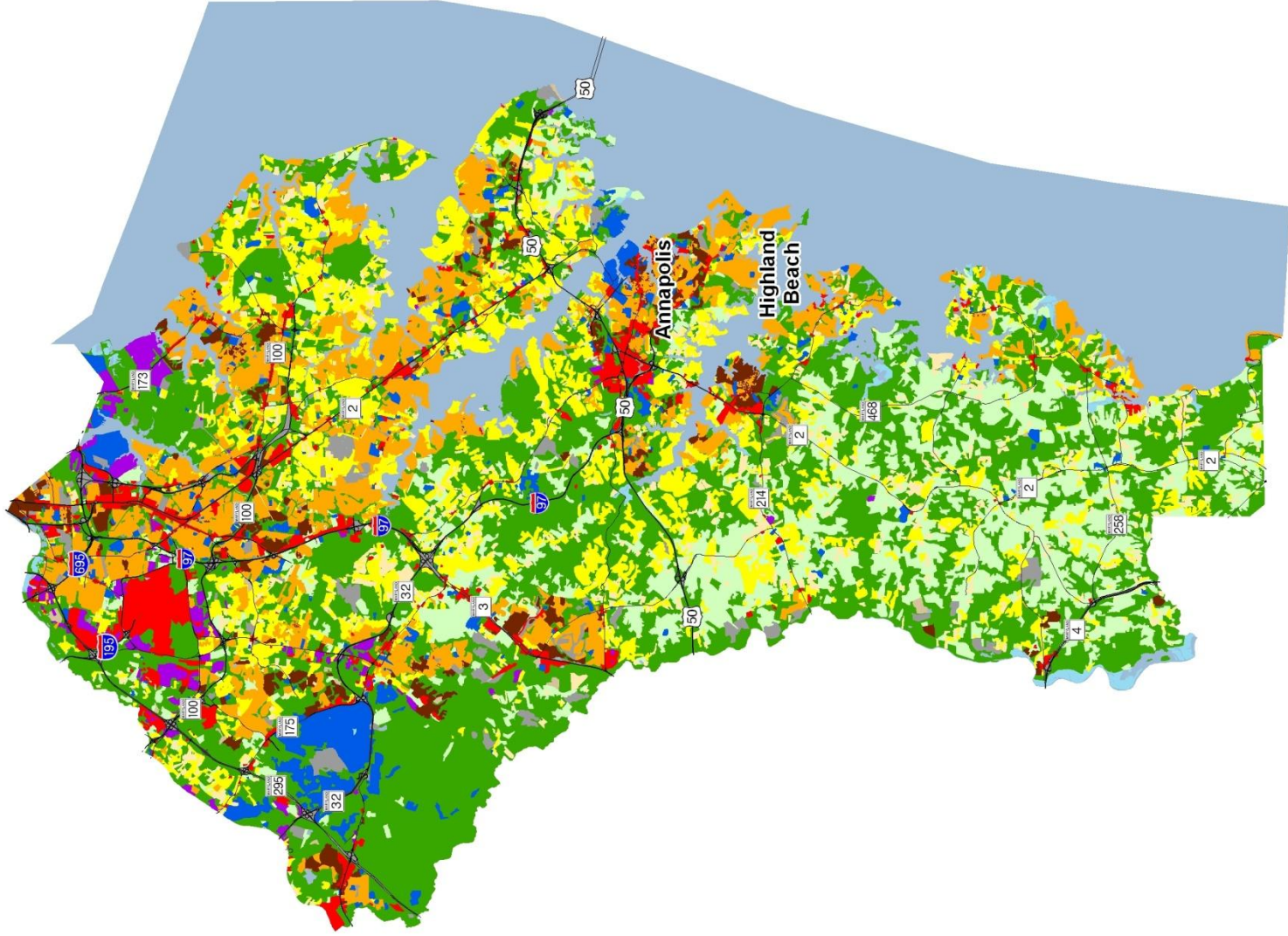
1. Two new categories have been added to the 2010 Land Use/Land Cover layer update; very low density residential development (191,192) and transportation (80).

2. Updates/modifications to the 2010 land use/land cover layers used the 2007 NAIP aerial imagery and parcel information from Maryland Property View 2008.

3. The original 2002 data were mapped using geo-rectified LANDSAT satellite imagery and 2000 MD Property View. In 2010 two new land use categories were added, transportation and very low density residential making it necessary to modify the 2002 land use/land cover layer to incorporate these categories for comparative purposes. Additionally, better imagery and property data information were used to make further modifications. The enhanced 2002 dataset is available upon request.

4. Very low density residential was not mapped in 1973, so there is no data associated with changes. Transportation was not mapped in 1973.

5. As noted above, new land use categories were added in 2010 and associated adjustments were made to 2002 data. Similar adjustments were not made to 1973 data, making it impossible to know how much change from 1973 is due to new development since then, versus misclassified land uses at that time. For these reasons, we suggest reliance only on change statistics for the aggregate land use categories, Total Developed and Total Resource Lands

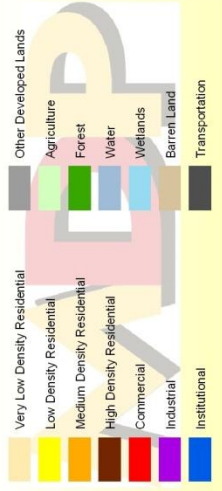
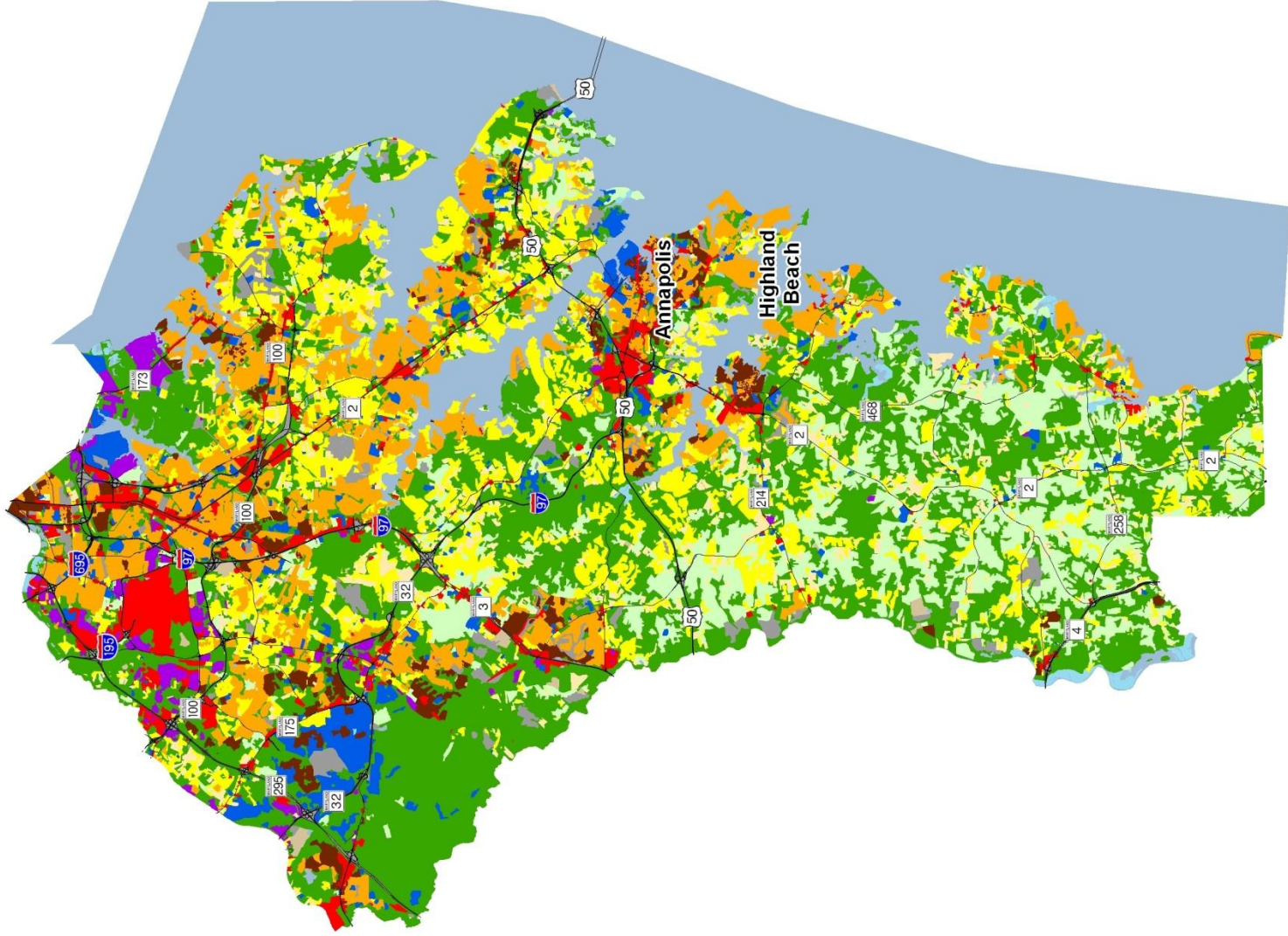


Anne Arundel County 2002 Land Use/Land Cover

1) The original 2002 data were mapped using geo-rectified LANDSAT satellite imagery and 2000 MD PropertyView. In 2010 two new land use categories were added, transportation and very low density residential making it necessary to modify the 2002 land use/land cover layer to incorporate these categories for comparative purposes. Additionally, better imagery and property data information were used to make further modifications. The enhanced 2002 dataset is available upon request.



0 1.5 3 6 Miles



Anne Arundel County 2010 Land Use/Land Cover

1) Two new categories have been added to the 2010 Land Use/Land Cover layer update, very low density residential development (191, 192) and transportation (80).
 2) Updates/modifications to the 2010 land use/land cover layers used the 2007 NAIP aerial imagery and parcel information from Maryland Property View 2008.

