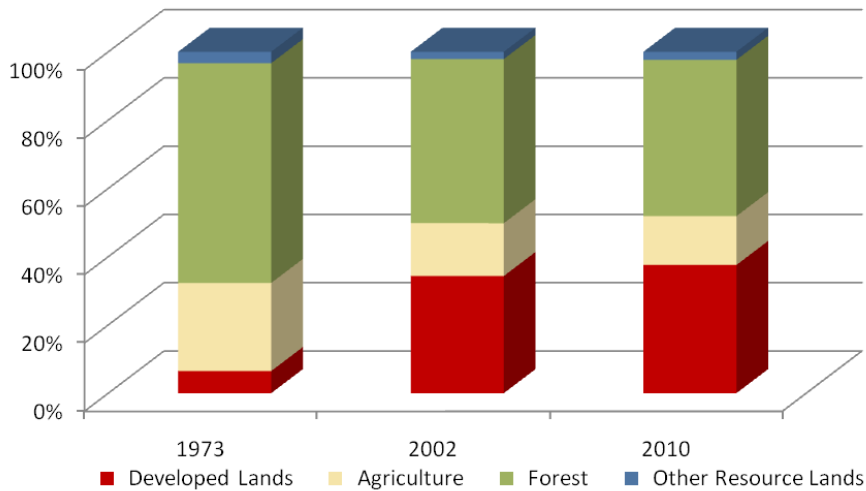


Calvert County

	Land Use in Acres		Land Use Change	
	2002 ³ Acres	2010 ² Acres	2002-2010 Acres	Percent
Very Low Density Residential ¹	9,756	10,569	813	8.3%
Low Density Residential	27,284	29,260	1,976	7.2%
Medium Density Residential	5,444	5,985	541	9.9%
High Density Residential	442	543	100	22.6%
Commercial	1,027	1,234	207	20.1%
Industrial	682	785	103	15.1%
Other Developed Lands/ Institutional/Transportation ¹	2,429	3,116	687	28.3%
Total Developed Lands⁵	47,065	51,492	4,426	9.4%
Agriculture	21,230	19,622	-1,607	-7.6%
Forest	65,945	62,819	-3,126	-4.7%
Extractive/Barren/Bare	47	278	231	494.9%
Wetland	2,856	2,932	75	2.6%
Total Resource Lands⁵	90,077	85,651	-4,426	-4.9%
Total Land	137,143	137,143		
Water	83,833	83,833		

	Land Use in Acres			Land Use Change
	1973 ⁴	2002 ³	2010 ^{1,2}	1973-2010 Acres
All Residential	6,832	42,927	46,357	39,524
All Non-Residential	2,060	4,138	5,135	3,075
Total Developed Lands⁵	8,893	47,065	51,492	42,599
Total Resource Lands⁵	128,532	90,077	85,651	-42,881
Total Land	137,425	137,143	137,143	
Water	83,551	83,833	83,833	

Land Use Change 1973 - 2010



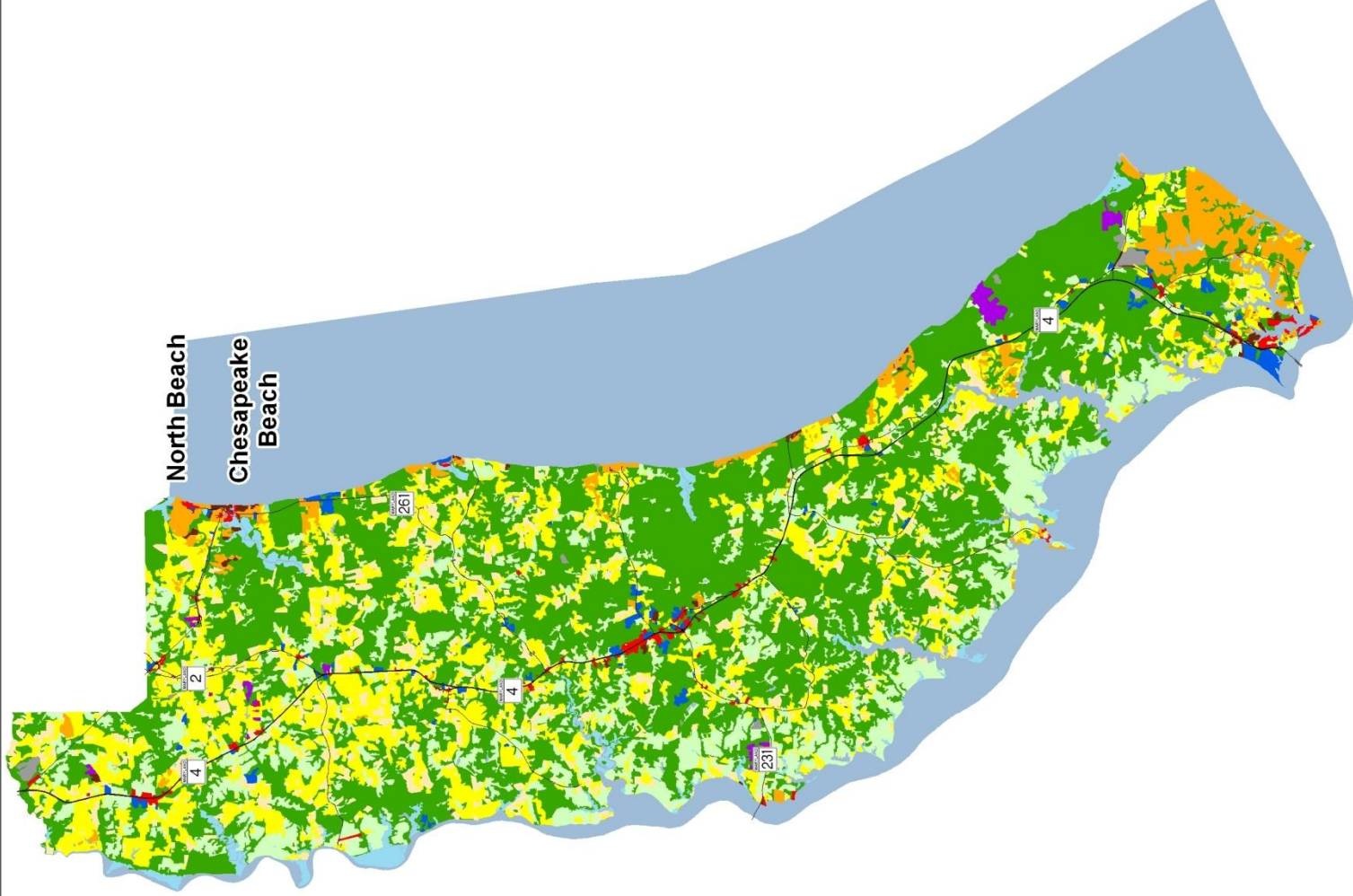
1. Two new categories have been added to the 2010 Land Use/Land Cover layer update; very low density residential development (191,192) and transportation (80).

2. Updates/modifications to the 2010 land use/land cover layers used the 2007 NAIP aerial imagery and parcel information from Maryland Property View 2008.

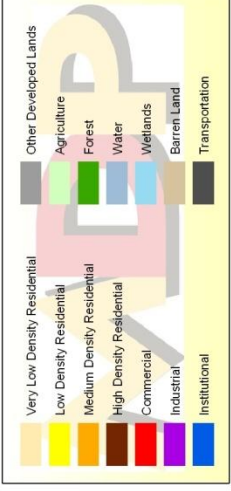
3. The original 2002 data were mapped using geo-rectified LANDSAT satellite imagery and 2000 MD Property View. In 2010 two new land use categories were added, transportation and very low density residential making it necessary to modify the 2002 land use/land cover layer to incorporate these categories for comparative purposes. Additionally, better imagery and property data information were used to make further modifications. The enhanced 2002 dataset is available upon request.

4. Very low density residential was not mapped in 1973, so there is no data associated with changes. Transportation was not mapped in 1973.

5. As noted above, new land use categories were added in 2010 and associated adjustments were made to 2002 data. Similar adjustments were not made to 1973 data, making it impossible to know how much change from 1973 is due to new development since then, versus misclassified land uses at that time. For these reasons, we suggest reliance only on change statistics for the aggregate land use categories, Total Developed and Total Resource Lands

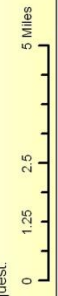


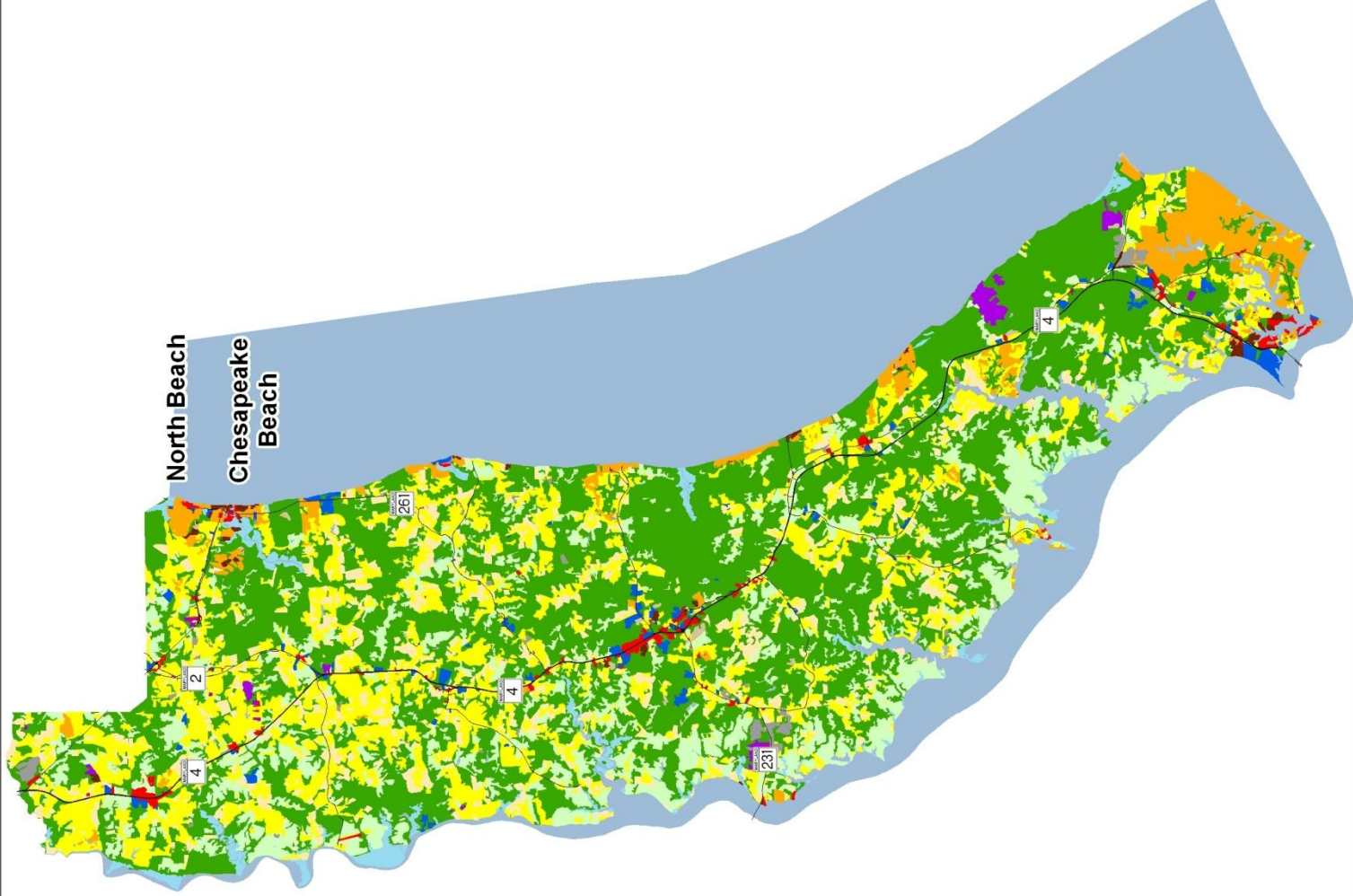
North Beach
Chesapeake Beach



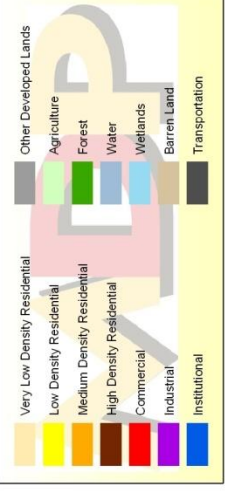
Calvert County 2002 Land Use/Land Cover

1) The original 2002 data were mapped using geo-rectified LANDSAT satellite imagery and 2000 MD Property view. In 2010 two new land use categories were added, transportation and very low density residential making it necessary to modify the 2002 land use/land cover layer to incorporate these categories for comparative purposes. Additionally, better imagery and property data information were used to make further modifications. The enhanced 2002 dataset is available upon request.



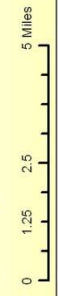


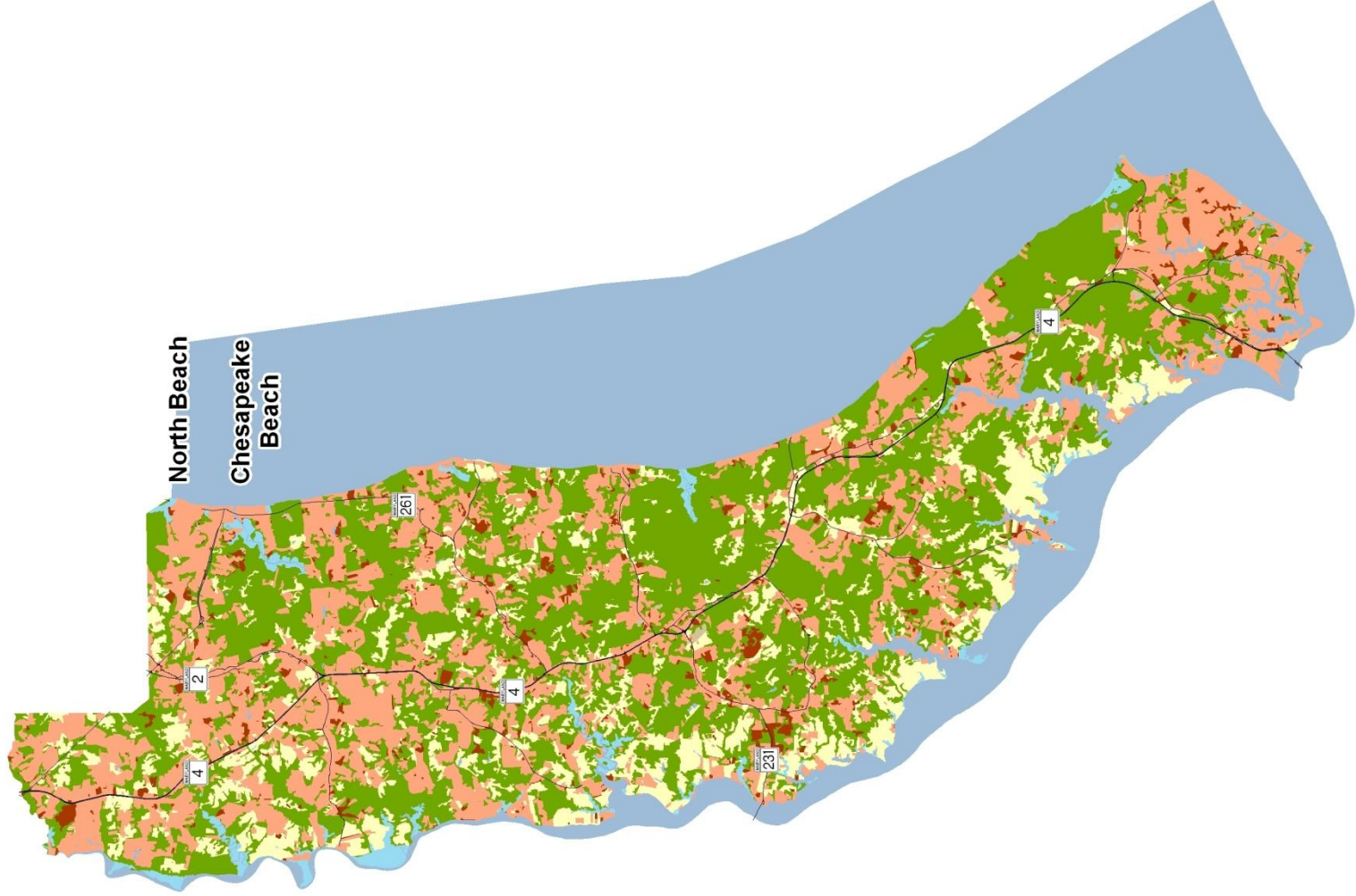
North Beach
Chesapeake Beach



Calvert County 2010 Land Use/Land Cover

1) Two new categories have been added to the 2010 Land Use/Land Cover layer update: very low density residential development (191,192) and transportation (80).
2) Updates/modifications to the 2010 land use/land cover layers used the 2007 NAIP aerial imagery and parcel information from Maryland Property View 2008.





North Beach
Chesapeake
Beach



Calvert County New Development, 2002-2010

1) Updates/modifications to the 2010 land use/land cover layers used the 2007 NAIP aerial imagery and parcel information from Maryland Property View 2008.
 2) The original 2002 data were mapped using geo-rectified LANDSAT satellite imagery and 2000 MD Property View. In 2010 two new land use categories were added, transportation and very low density residential, making it necessary to modify the 2002 land use/land cover layer to incorporate these categories for comparative purposes.

