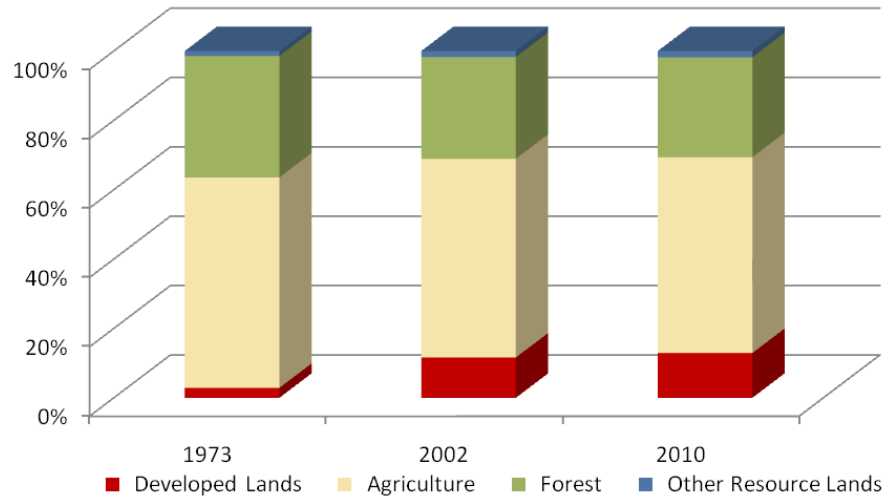


Caroline County

	Land Use in Acres		Land Use Change	
	2002 ³ Acres	2010 ² Acres	2002-2010 Acres	Percent
Very Low Density Residential ¹	9,863	10,820	957	9.7%
Low Density Residential	9,651	10,686	1,035	10.7%
Medium Density Residential	1,337	1,533	196	14.7%
High Density Residential	178	214	36	20.2%
Commercial	912	963	51	5.6%
Industrial	365	454	88	24.2%
Other Developed Lands/ Institutional/Transportation ¹	1,551	1,820	269	17.3%
Total Developed Lands⁵	23,858	26,490	2,632	11.0%
Agriculture	117,471	115,748	-1,723	-1.5%
Forest	60,162	59,122	-1,040	-1.7%
Extractive/Barren/Bare	66	209	144	218.6%
Wetland	3,497	3,485	-12	-0.3%
Total Resource Lands⁵	181,195	178,564	-2,632	-1.5%
Total Land	205,054	205,053		
Water	3,557	3,558		

	Land Use in Acres			Land Use Change
	1973 ⁴	2002 ³	2010 ^{1,2}	1973-2010 Acres
All Residential	4,181	21,029	23,253	19,072
All Non-Residential	1,667	2,829	3,237	1,570
Total Developed Lands⁵	5,848	23,858	26,490	20,642
Total Resource Lands⁵	198,909	181,195	178,564	-20,345
Total Land	204,757	205,054	205,053	
Water	3,854	3,557	3,558	

Land Use Change 1973 - 2010



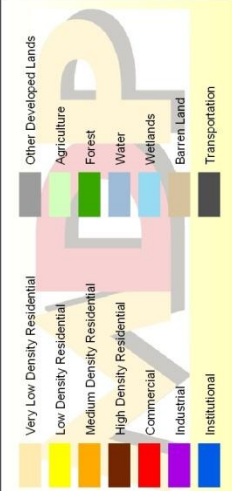
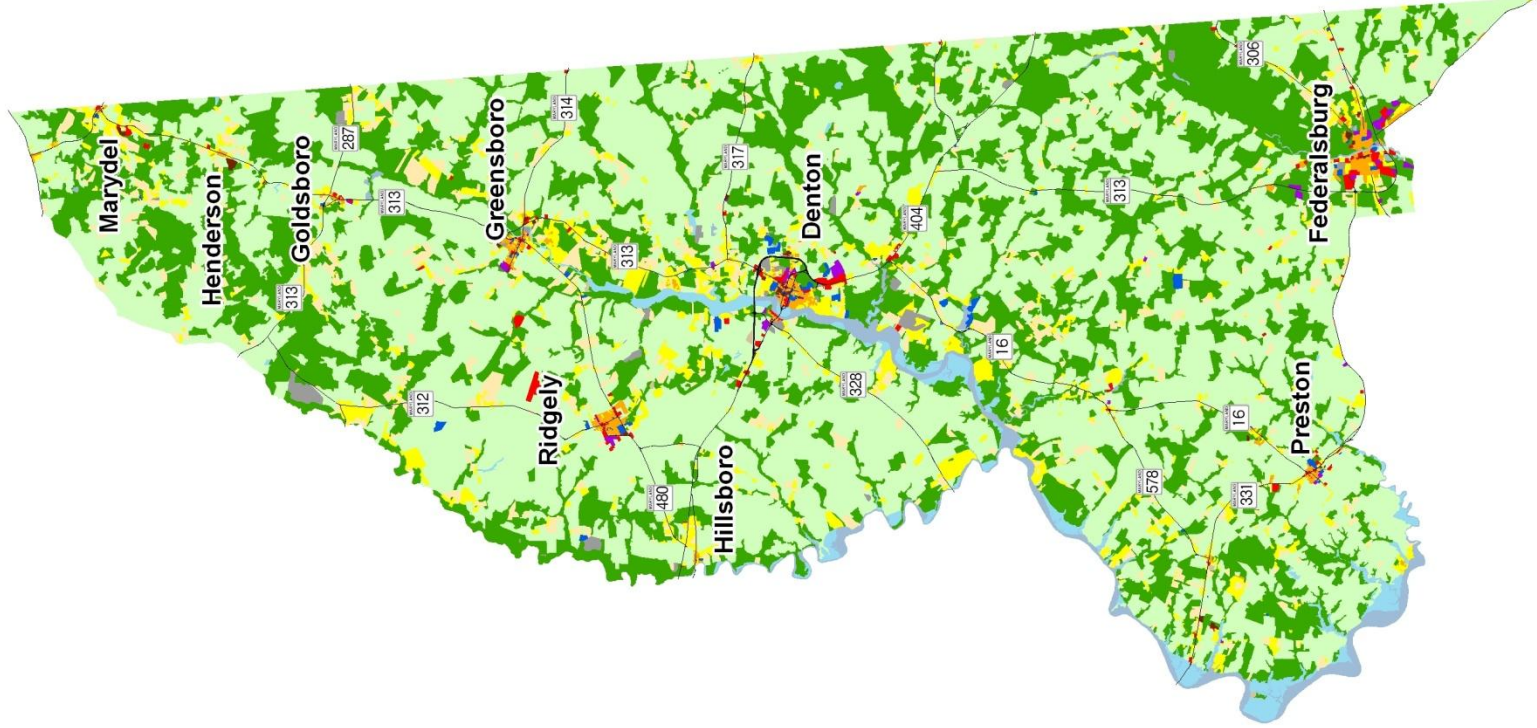
1. Two new categories have been added to the 2010 Land Use/Land Cover layer update; very low density residential development (191,192) and transportation (80).

2. Updates/modifications to the 2010 land use/land cover layers used the 2007 NAIP aerial imagery and parcel information from Maryland Property View 2008.

3. The original 2002 data were mapped using geo-rectified LANDSAT satellite imagery and 2000 MD Property View. In 2010 two new land use categories were added, transportation and very low density residential making it necessary to modify the 2002 land use/land cover layer to incorporate these categories for comparative purposes. Additionally, better imagery and property data information were used to make further modifications. The enhanced 2002 dataset is available upon request.


4. Very low density residential was not mapped in 1973, so there is no data associated with changes. Transportation was not mapped in 1973.

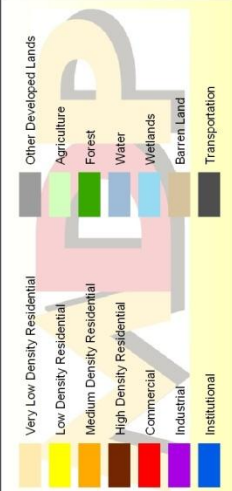
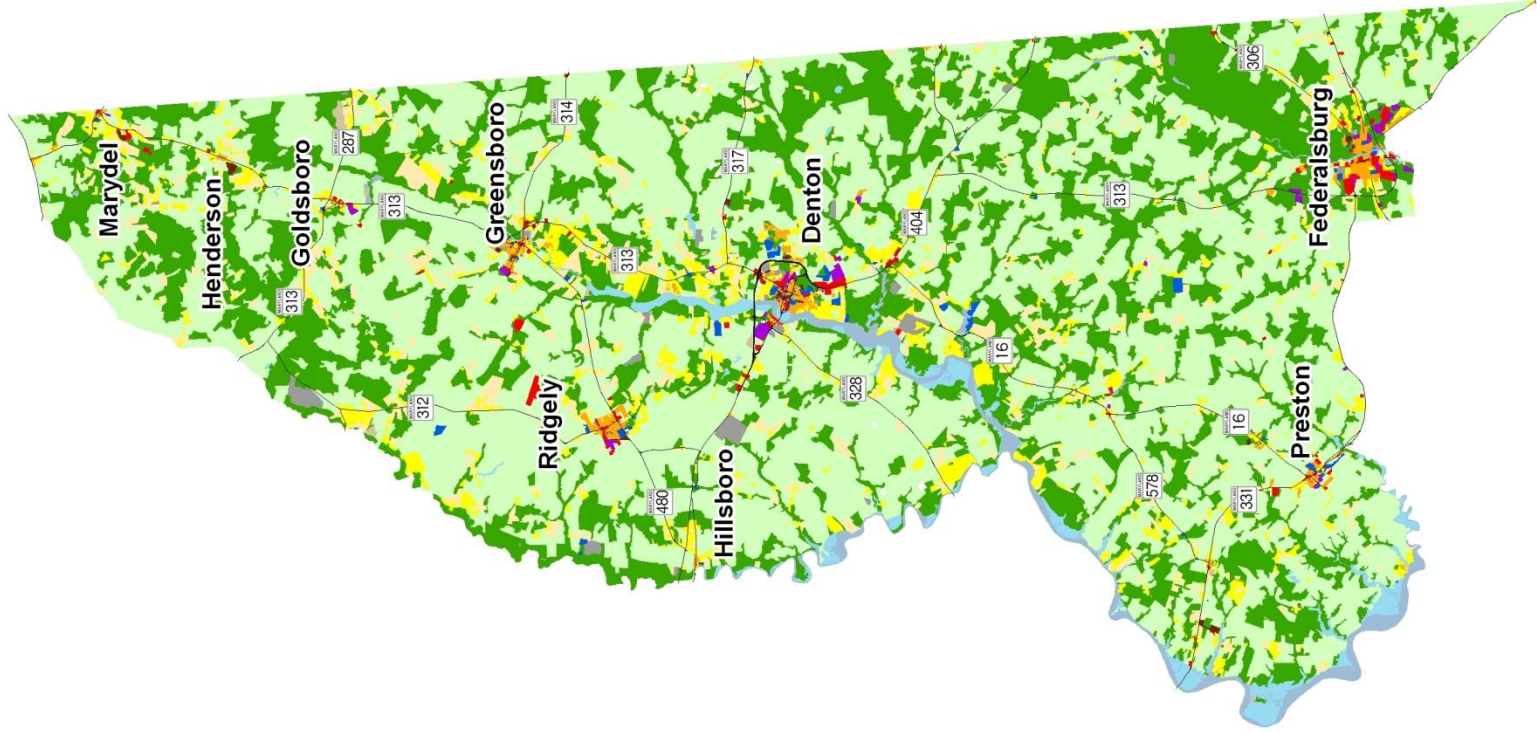
5. As noted above, new land use categories were added in 2010 and associated adjustments were made to 2002 data. Similar adjustments were not made to 1973 data, making it impossible to know how much change from 1973 is due to new development since then, versus misclassified land uses at that time. For these reasons, we suggest reliance only on change statistics for the aggregate land use categories, Total Developed and Total Resource Lands



Caroline County 2002 Land Use/Land Cover

1) The original 2002 data were mapped using geo-rectified LANDSAT satellite imagery and 2000 MD PropertyView. In 2010 two new land use categories were added, transportation and very low density residential making it necessary to modify the 2002 land use/land cover layer to incorporate these categories for comparative purposes. Additionally, better imagery and property data information were used to make further modifications. The enhanced 2002 dataset is available upon request. 5 Miles



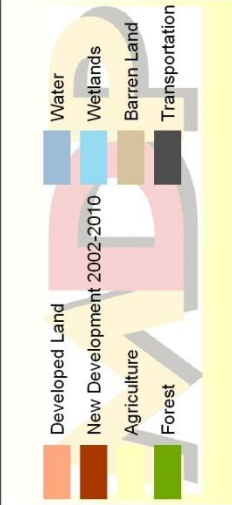
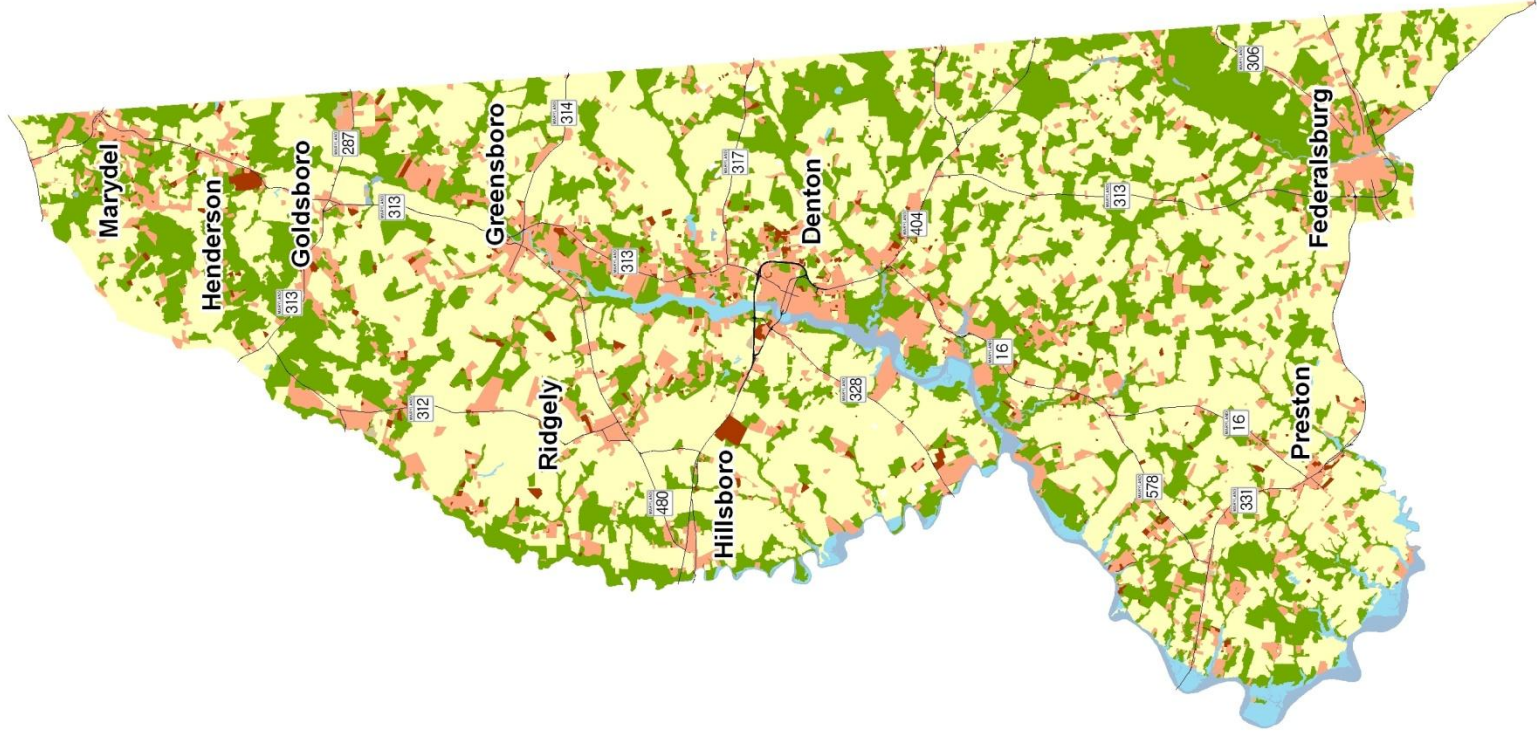


Caroline County 2010 Land Use/Land Cover

1) Two new categories have been added to the 2010 Land Use/Land Cover layer update; very low density residential development (191, 192) and transportation (80).

2) Updates/modifications to the 2010 land use/land cover layers used the 2007 NAIP aerial imagery and parcel information from Maryland Property View 2008.

0 1.25 2.5 5 Miles



Caroline County New Development, 2002-2010

1) Updates/modifications to the 2010 land use/land cover layers used the 2007 NIP, aerial imagery and parcel information from Maryland Property View 2008.
 2) The original 2002 data were mapped using geo-rectified LANDSAT, satellite imagery, and 2000 MD Property View. In 2010 two new land use categories were added, transportation and very low density residential, making it necessary to modify the 2002 land use/land cover layer to incorporate these categories for comparative purposes.

