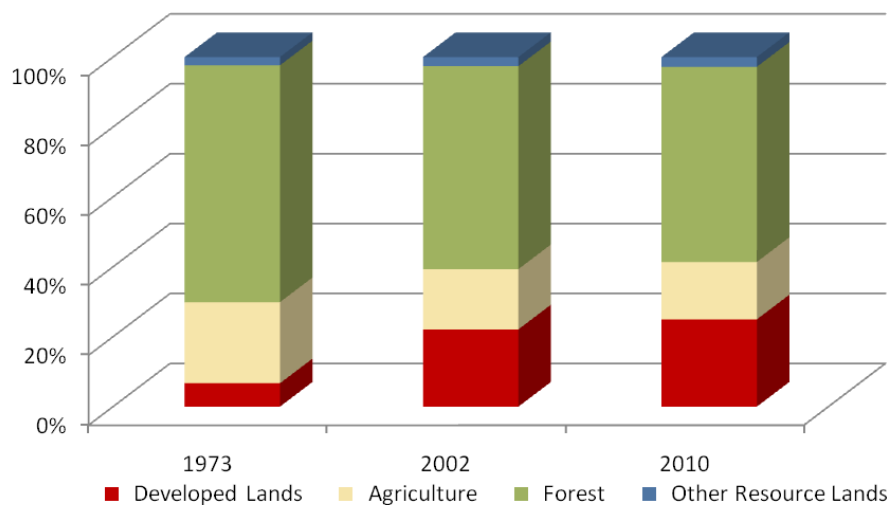


Charles County

	Land Use in Acres		Land Use Change	
	2002 ³ Acres	2010 ² Acres	2002-2010 Acres	Percent
Very Low Density Residential ¹	17,029	18,721	1,692	9.9%
Low Density Residential	30,117	33,244	3,128	10.4%
Medium Density Residential	7,069	8,692	1,622	22.9%
High Density Residential	1,503	1,804	301	20.0%
Commercial	2,732	3,199	467	17.1%
Industrial	1,224	1,234	11	0.9%
Other Developed Lands/ Institutional/Transportation ¹	5,403	6,610	1,207	22.3%
Total Developed Lands⁵	65,077	73,504	8,427	12.9%
Agriculture	50,769	48,368	-2,401	-4.7%
Forest	170,937	164,424	-6,513	-3.8%
Extractive/Barren/Bare	870	1,375	504	58.0%
Wetland	6,797	6,780	-18	-0.3%
Total Resource Lands⁵	229,374	220,947	-8,427	-3.7%
Total Land	294,451	294,451		
Water	119,856	119,855		

	Land Use in Acres			Land Use Change
	1973 ⁴	2002 ³	2010 ^{1,2}	1973-2010 Acres
All Residential	14,621	55,718	62,461	47,840
All Non-Residential	5,040	9,359	11,043	6,003
Total Developed Lands⁵	19,661	65,077	73,504	53,843
Total Resource Lands⁵	274,822	229,374	220,947	-53,875
Total Land	294,484	294,451	294,451	
Water	119,823	119,856	119,855	

Land Use Change 1973 - 2010



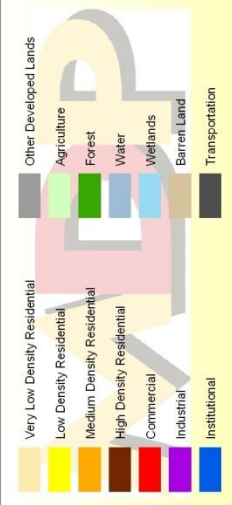
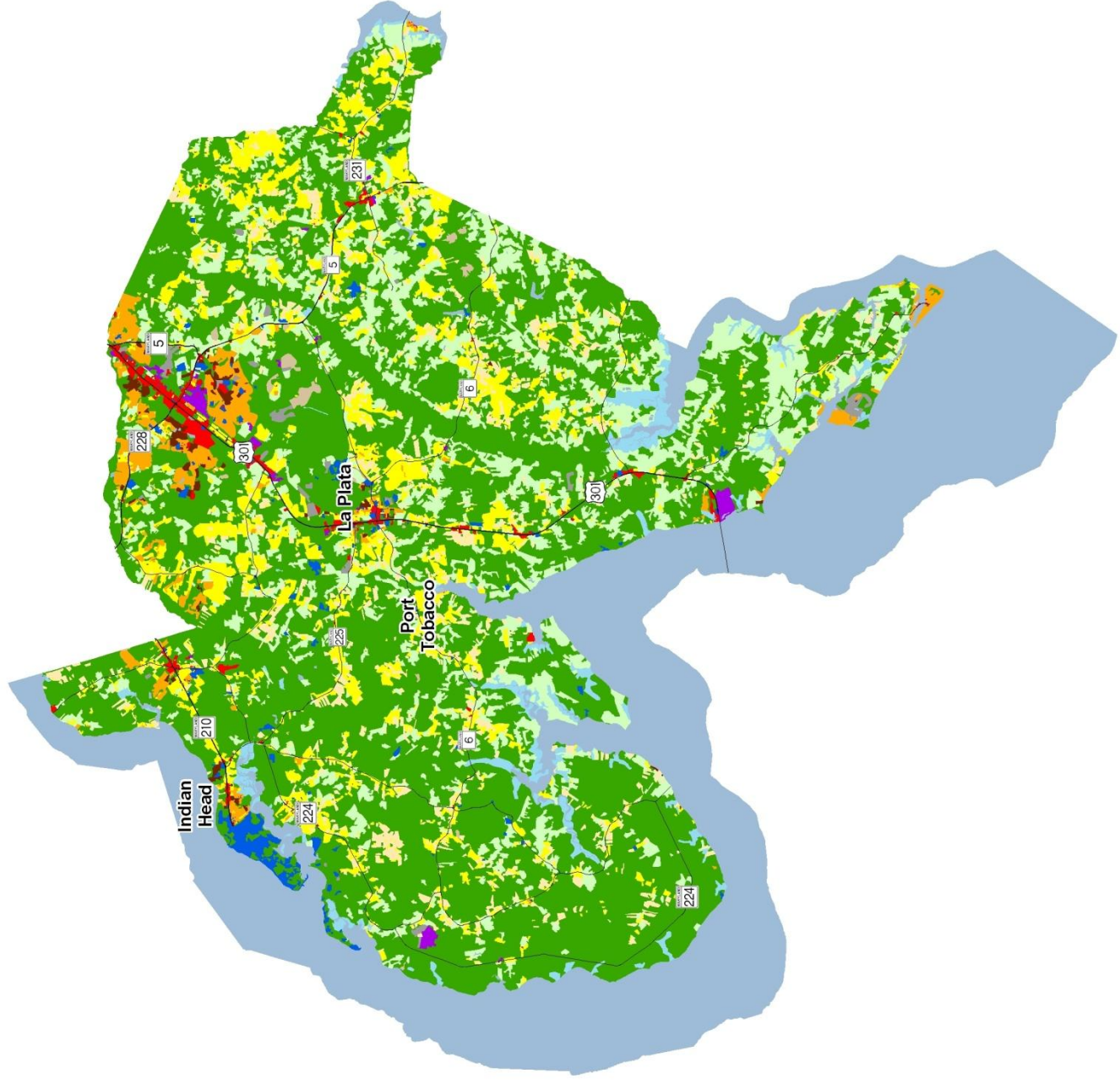
1. Two new categories have been added to the 2010 Land Use/Land Cover layer update; very low density residential development (191,192) and transportation (80).

2. Updates/modifications to the 2010 land use/land cover layers used the 2007 NAIP aerial imagery and parcel information from Maryland Property View 2008.

3. The original 2002 data were mapped using geo-rectified LANDSAT satellite imagery and 2000 MD Property View. In 2010 two new land use categories were added, transportation and very low density residential making it necessary to modify the 2002 land use/land cover layer to incorporate these categories for comparative purposes. Additionally, better imagery and property data information were used to make further modifications. The enhanced 2002 dataset is available upon request.

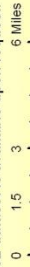
4. Very low density residential was not mapped in 1973, so there is no data associated with changes. Transportation was not mapped in 1973.

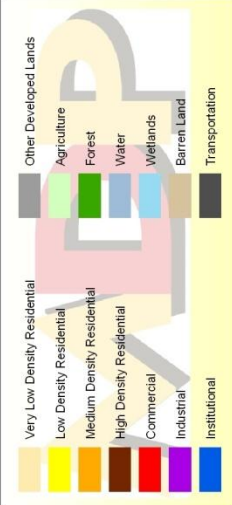
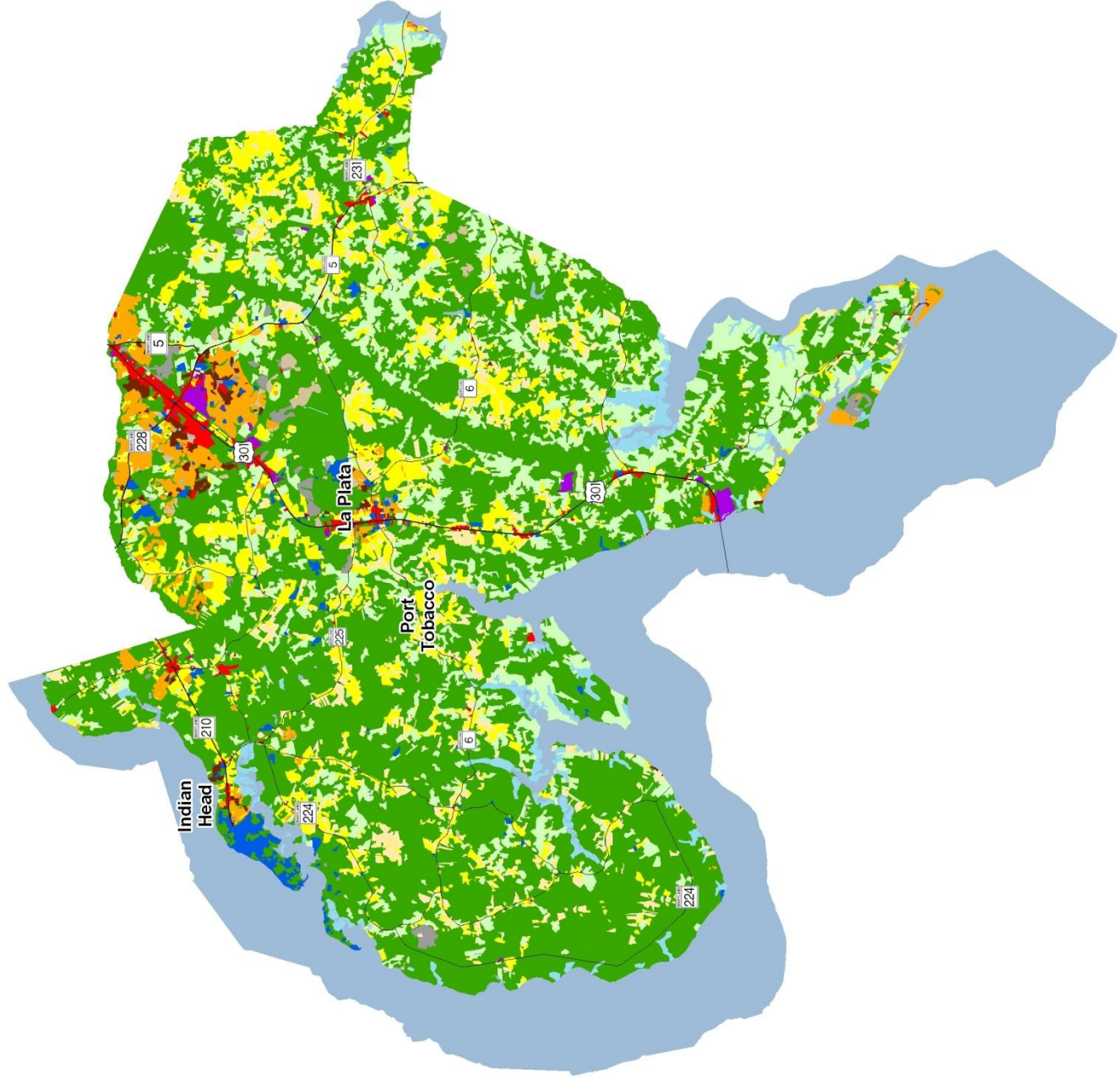
5. As noted above, new land use categories were added in 2010 and associated adjustments were made to 2002 data. Similar adjustments were not made to 1973 data, making it impossible to know how much change from 1973 is due to new development since then, versus misclassified land uses at that time. For these reasons, we suggest reliance only on change statistics for the aggregate land use categories, Total Developed and Total Resource Lands



Charles County 2002 Land Use/Land Cover

1) The original 2002 data were mapped using geo-rectified LANDSAT satellite imagery and 2000 MD PropertyView. In 2010 two new land use categories were added, transportation and very low density residential making it necessary to modify the 2002 land use/land cover layer to incorporate these categories for comparative purposes. Additionally, better imagery and property data information were used to make further modifications. The enhanced 2002 dataset is available upon request.

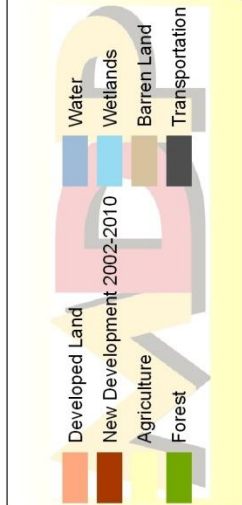
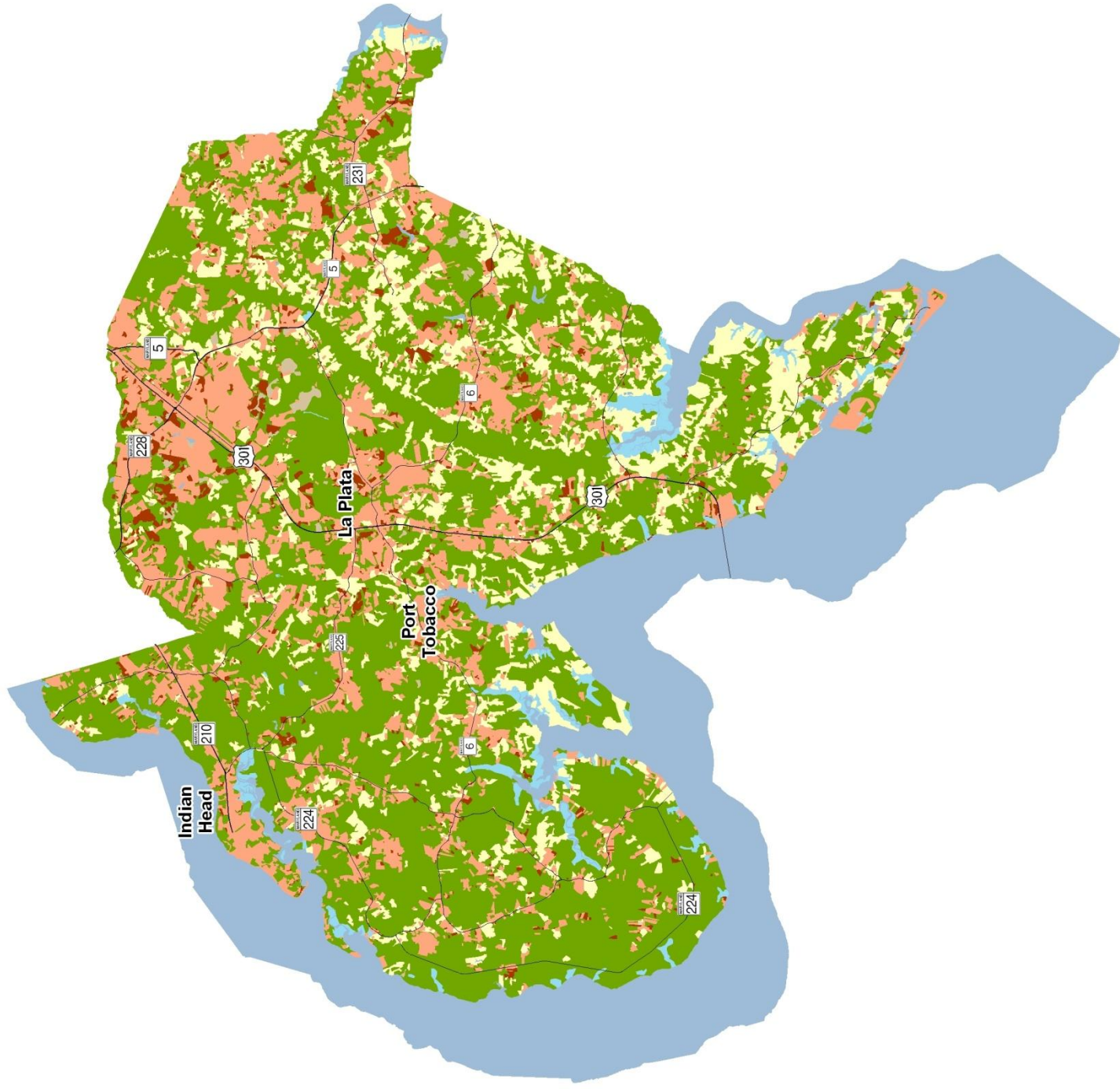




Charles County 2010 Land Use/Land Cover

1) Two new categories have been added to the 2010 Land Use/Land Cover layer update; very low density residential development (191,192) and transportation (80).
 2) Updates/modifications to the 2010 land use/land cover layers used the 2007 NAIP aerial imagery and parcel information from Maryland Property View 2008.





Charles County New Development, 2002-2010

1) Updates/modifications to the 2010 land use/land cover layers used the 2007 NAIP aerial imagery and parcel information from Maryland Property View 2008.
 2) The original 2002 data were mapped using geo-rectified LANDSAT satellite imagery and 2000 MD Property View. In 2010 two new land use categories were added, transportation and very low density residential, making it necessary to modify the 2002 land use/land cover layer to incorporate these categories for comparative purposes.

