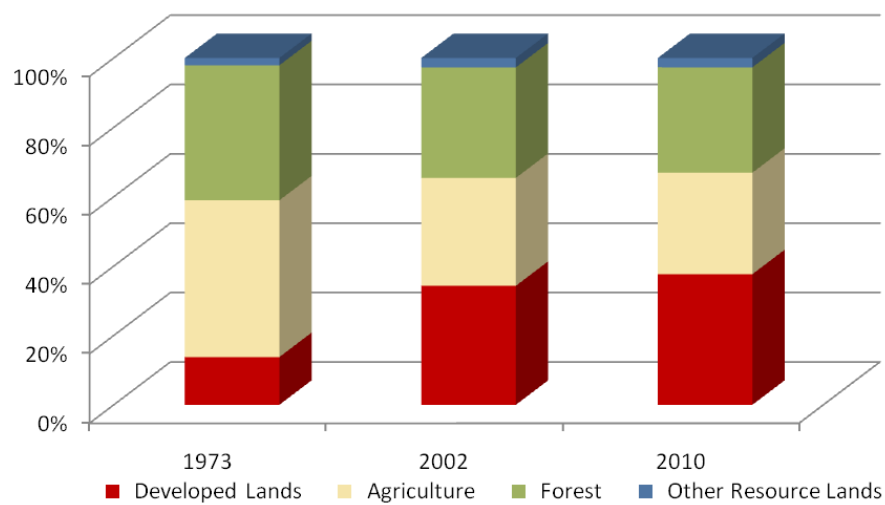


# Harford County

	Land Use in Acres		Land Use Change	
	2002 <sup>3</sup> Acres	2010 <sup>2</sup> Acres	2002-2010 Acres	Percent
Very Low Density Residential <sup>1</sup>	20,071	21,850	1,779	8.9%
Low Density Residential	34,770	37,455	2,685	7.7%
Medium Density Residential	11,449	12,881	1,433	12.5%
High Density Residential	3,508	4,357	849	24.2%
Commercial	4,185	5,083	897	21.4%
Industrial	1,828	1,999	171	9.4%
Other Developed Lands/ Institutional/Transportation <sup>1</sup>	20,500	22,108	1,609	7.8%
<b>Total Developed Lands<sup>5</sup></b>	<b>96,310</b>	<b>105,732</b>	<b>9,422</b>	<b>9.8%</b>
Agriculture	87,350	82,124	-5,226	-6.0%
Forest	89,473	85,309	-4,164	-4.7%
Extractive/Barren/Bare	402	379	-23	-5.7%
Wetland	7,191	7,182	-9	-0.1%
<b>Total Resource Lands<sup>5</sup></b>	<b>184,416</b>	<b>174,994</b>	<b>-9,422</b>	<b>-5.1%</b>
Total Land	280,726	280,726		
Water	54,563	54,563		

	Land Use in Acres			Land Use Change
	1973 <sup>4</sup>	2002 <sup>3</sup>	2010 <sup>1,2</sup>	1973-2010 Acres
All Residential	18,806	69,797	76,543	57,737
All Non-Residential	19,875	26,513	29,190	9,314
<b>Total Developed Lands<sup>5</sup></b>	<b>38,681</b>	<b>96,310</b>	<b>105,732</b>	<b>67,051</b>
<b>Total Resource Lands<sup>5</sup></b>	<b>242,222</b>	<b>184,416</b>	<b>174,994</b>	<b>-67,228</b>
Total Land	280,903	280,726	280,726	
Water	54,386	54,563	54,563	

**Land Use Change 1973 - 2010**



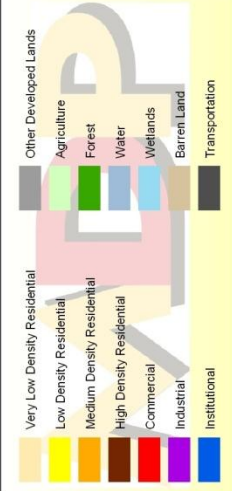
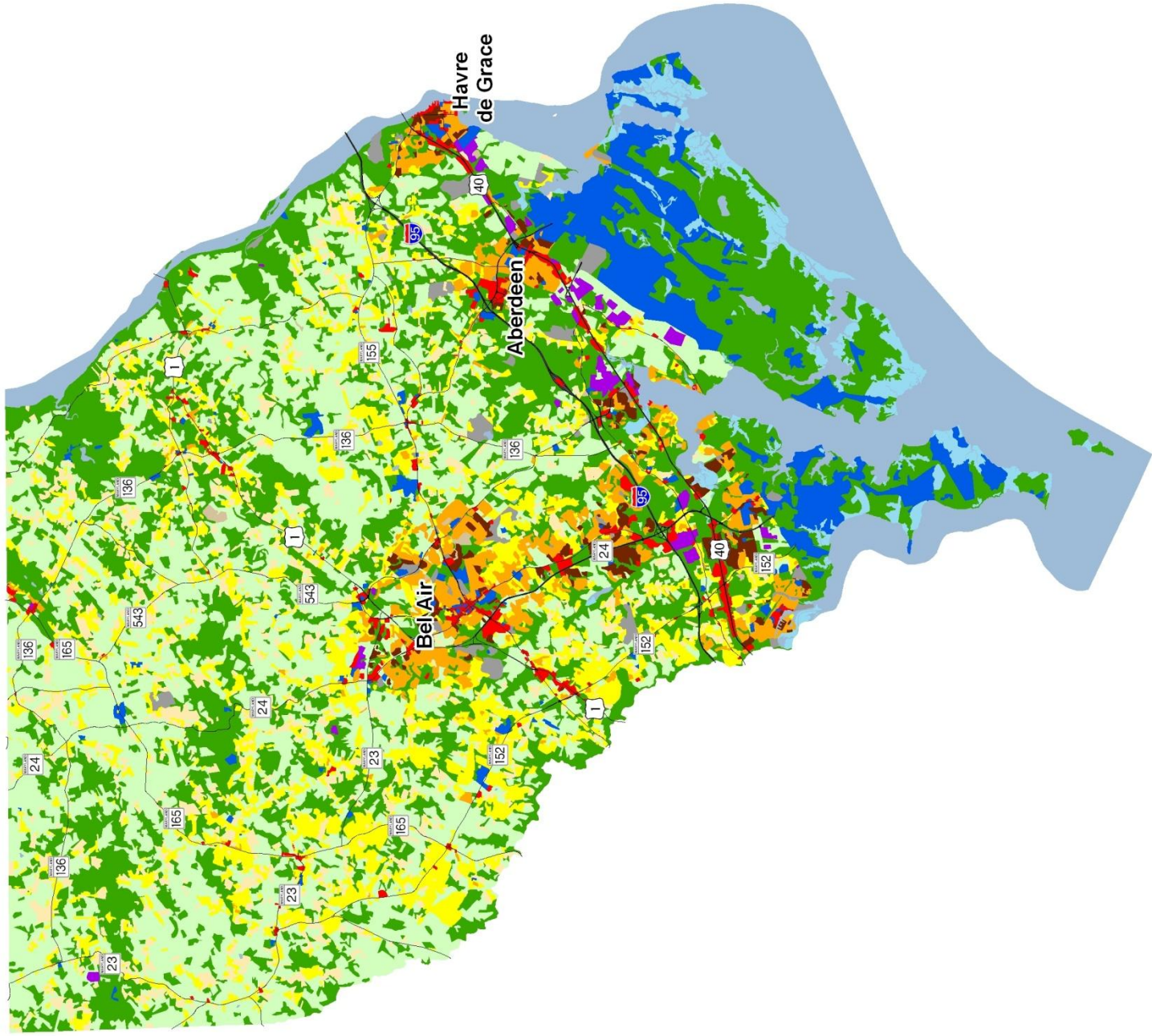
1. Two new categories have been added to the 2010 Land Use/Land Cover layer update; very low density residential development (191,192) and transportation (80).

2. Updates/modifications to the 2010 land use/land cover layers used the 2007 NAIP aerial imagery and parcel information from Maryland Property View 2008.

3. The original 2002 data were mapped using geo-rectified LANDSAT satellite imagery and 2000 MD Property View. In 2010 two new land use categories were added, transportation and very low density residential making it necessary to modify the 2002 land use/land cover layer to incorporate these categories for comparative purposes. Additionally, better imagery and property data information were used to make further modifications. The enhanced 2002 dataset is available upon request.

4. Very low density residential was not mapped in 1973, so there is no data associated with changes. Transportation was not mapped in 1973.

5. As noted above, new land use categories were added in 2010 and associated adjustments were made to 2002 data. Similar adjustments were not made to 1973 data, making it impossible to know how much change from 1973 is due to new development since then, versus misclassified land uses at that time. For these reasons, we suggest reliance only on change statistics for the aggregate land use categories, Total Developed and Total Resource Lands

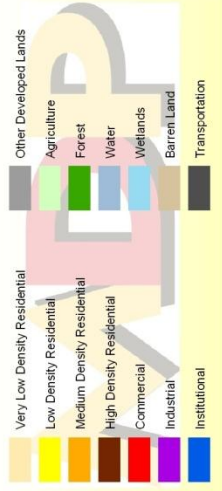
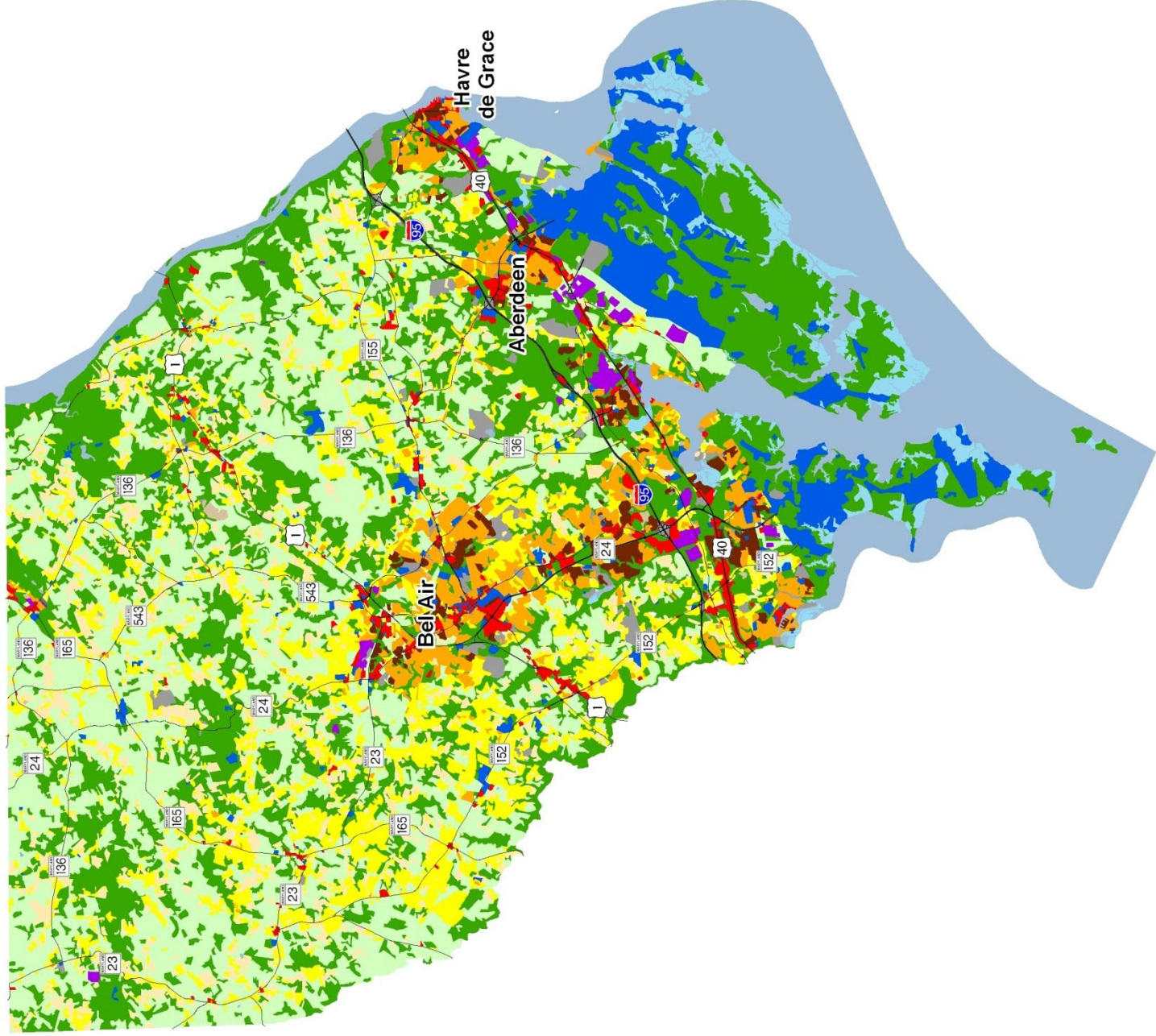


## Harford County 2002 Land Use/Land Cover

1) The original 2002 data were mapped using geo-rectified LANDSAT satellite imagery and 2000 MD PropertyView. In 2010 two new land use categories were added, transportation and very low density residential making it necessary to modify the 2002 land use/land cover layer to incorporate these categories for comparative purposes. Additionally, better imagery and property data information were used to make further modifications. The enhanced 2002 dataset is available upon request.







## Harford County 2010 Land Use/Land Cover

1) Two new categories have been added to the 2010 Land Use/Land Cover layer update: very low density residential development (191, 192) and transportation (80).  
 2) Updates/modifications to the 2010 land use/land cover layers used the 2007 NAIP aerial imagery and parcel information from Maryland Property View 2008.

