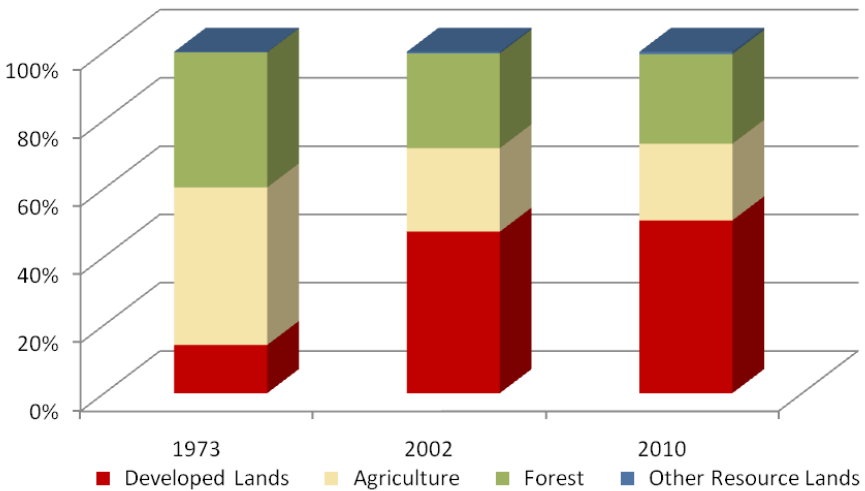


# Howard County

	Land Use in Acres		Land Use Change	
	2002 <sup>3</sup> Acres	2010 <sup>2</sup> Acres	2002-2010 Acres	Percent
Very Low Density Residential <sup>1</sup>	13,137	13,835	698	5.3%
Low Density Residential	26,977	28,648	1,671	6.2%
Medium Density Residential	15,723	16,284	561	3.6%
High Density Residential	4,176	4,829	653	15.6%
Commercial	3,333	4,067	733	22.0%
Industrial	4,675	5,077	402	8.6%
Other Developed Lands/ Institutional/Transportation <sup>1</sup>	8,223	8,833	610	7.4%
<b>Total Developed Lands<sup>5</sup></b>	<b>76,243</b>	<b>81,572</b>	<b>5,329</b>	<b>7.0%</b>
Agriculture	39,418	36,178	-3,239	-8.2%
Forest	44,742	42,375	-2,367	-5.3%
Extractive/Barren/Bare	738	1,022	284	38.5%
Wetland	36	30	-6	-17.5%
<b>Total Resource Lands<sup>5</sup></b>	<b>84,933</b>	<b>79,605</b>	<b>-5,329</b>	<b>-6.3%</b>
Total Land	161,176	161,176		
Water	1,001	1,001		

	Land Use in Acres			Land Use Change
	1973 <sup>4</sup>	2002 <sup>3</sup>	2010 <sup>1,2</sup>	1973-2010 Acres
All Residential	16,257	60,012	63,595	47,338
All Non-Residential	6,441	16,231	17,976	11,535
<b>Total Developed Lands<sup>5</sup></b>	<b>22,699</b>	<b>76,243</b>	<b>81,572</b>	<b>58,873</b>
<b>Total Resource Lands<sup>5</sup></b>	<b>138,170</b>	<b>84,933</b>	<b>79,605</b>	<b>-58,565</b>
Total Land	160,868	161,176	161,176	
Water	1,309	1,001	1,001	

**Land Use Change 1973 - 2010**



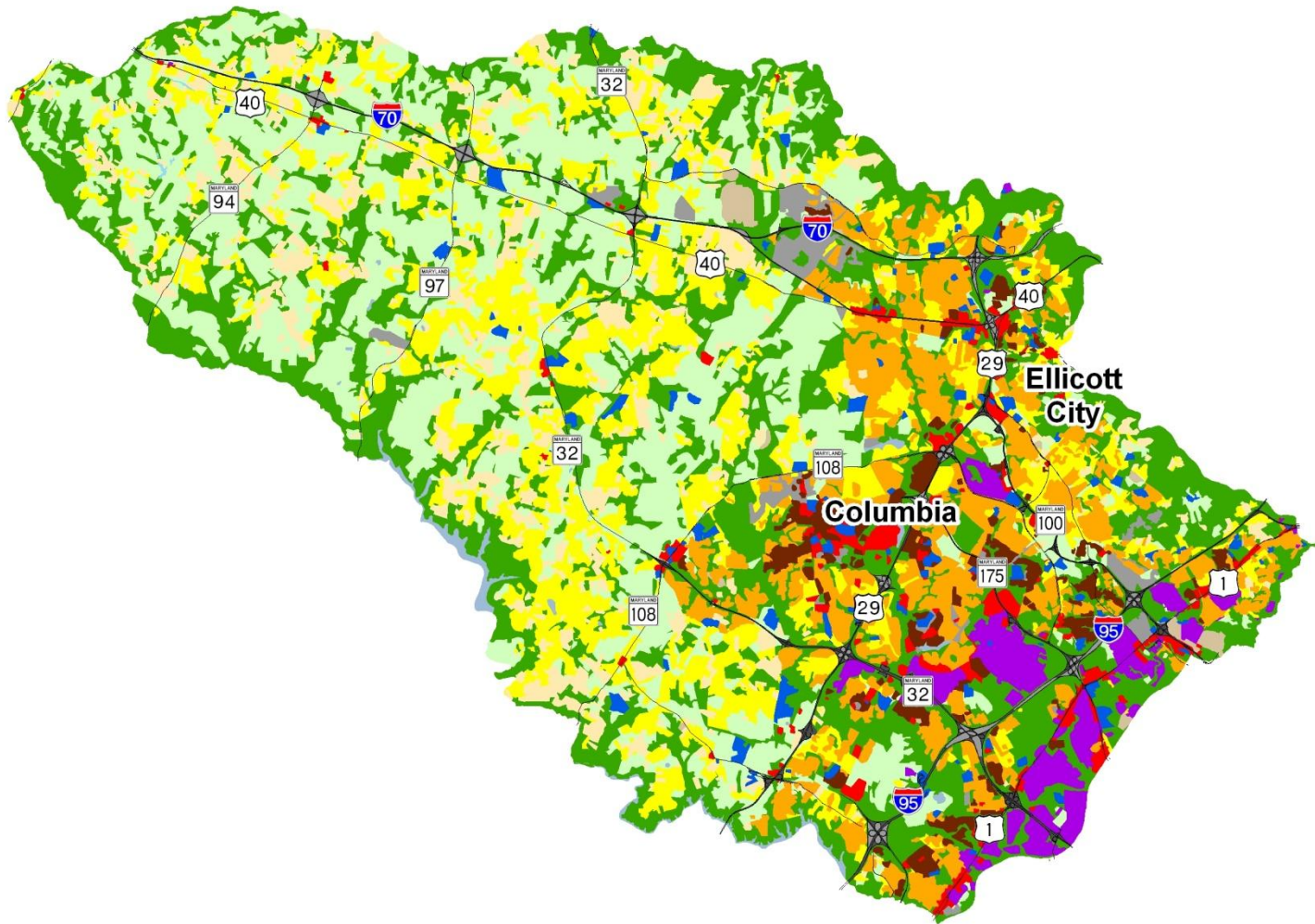
1. Two new categories have been added to the 2010 Land Use/Land Cover layer update; very low density residential development (191,192) and transportation (80).

2. Updates/modifications to the 2010 land use/land cover layers used the 2007 NAIP aerial imagery and parcel information from Maryland Property View 2008.

3. The original 2002 data were mapped using geo-rectified LANDSAT satellite imagery and 2000 MD Property View. In 2010 two new land use categories were added, transportation and very low density residential making it necessary to modify the 2002 land use/land cover layer to incorporate these categories for comparative purposes. Additionally, better imagery and property data information were used to make further modifications. The enhanced 2002 dataset is available upon request.

4. Very low density residential was not mapped in 1973, so there is no data associated with changes. Transportation was not mapped in 1973.

5. As noted above, new land use categories were added in 2010 and associated adjustments were made to 2002 data. Similar adjustments were not made to 1973 data, making it impossible to know how much change from 1973 is due to new development since then, versus misclassified land uses at that time. For these reasons, we suggest reliance only on change statistics for the aggregate land use categories, Total Developed and Total Resource Lands

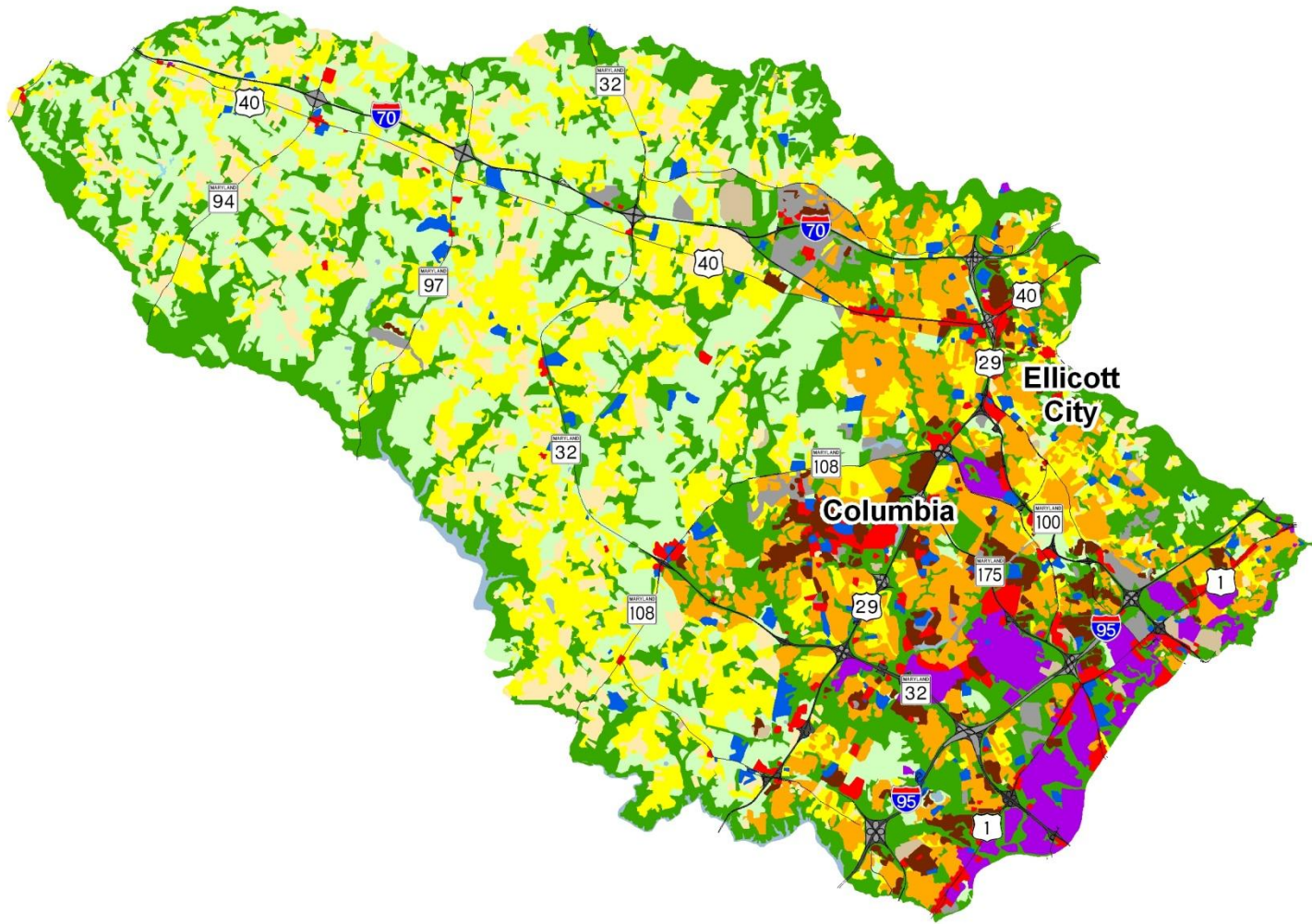


## Howard County 2002 Land Use/Land Cover

1) The original 2002 data were mapped using geo-rectified LANDSAT satellite imagery and 2000 MD Property View. In 2010 two new land use categories were added, transportation and very low density residential making it necessary to modify the 2002 land use/land cover layer to incorporate these categories for comparative purposes. Additionally, better imagery and property data information were used to make further modifications. The enhanced 2002 dataset is available upon request.

0 1.5 3 6 Miles





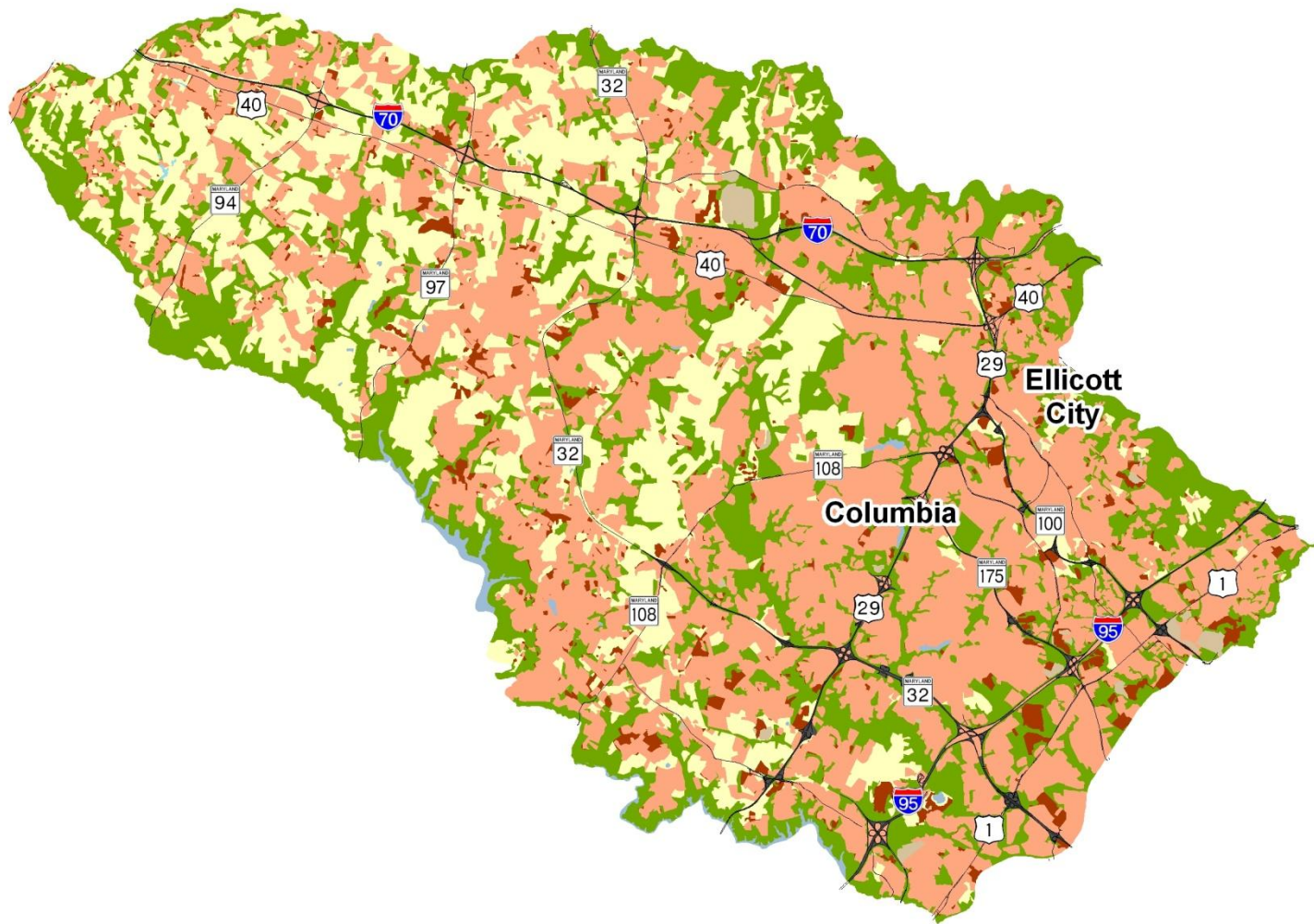
## Howard County 2010 Land Use/Land Cover

- 1) Two new categories have been added to the 2010 Land Use/Land Cover layer update; very low density residential development (191, 192) and transportation (80).
- 2) Updates/modifications to the 2010 land use/land cover layers used the 2007 NAIP aerial imagery and parcel information from Maryland Property View 2008.

0 1.5 3 6 Miles







## Howard County New Development, 2002-2010

1) Updates/modifications to the 2010 land use/land cover layers used the 2007 NAIP aerial imagery and parcel information from Maryland Property View 2008.  
 2) The original 2002 data were mapped using geo-rectified LANDSAT satellite imagery and 2000 MD Property View. In 2010 two new land use categories were added, transportation and very low density residential, making it necessary to modify the 2002 land use/land cover layer to incorporate these categories for comparative purposes.

0 1.5 3 6 Miles

