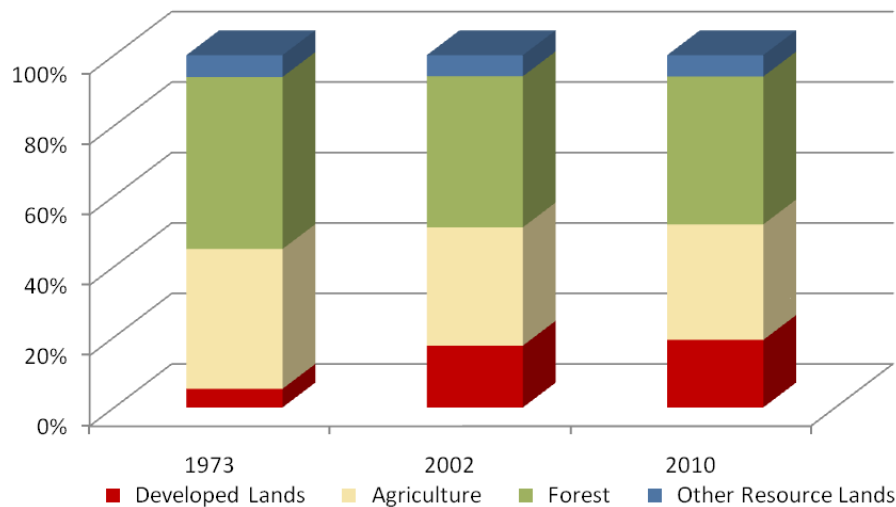


# Wicomico County

	Land Use in Acres		Land Use Change	
	2002 <sup>3</sup> Acres	2010 <sup>2</sup> Acres	2002-2010 Acres	Percent
Very Low Density Residential <sup>1</sup>	9,569	10,280	711	7.4%
Low Density Residential	16,763	18,010	1,246	7.4%
Medium Density Residential	5,460	5,944	485	8.9%
High Density Residential	1,158	1,418	259	22.4%
Commercial	3,914	4,377	463	11.8%
Industrial	1,482	1,611	130	8.7%
Other Developed Lands/ Institutional/Transportation <sup>1</sup>	3,848	4,418	569	14.8%
<b>Total Developed Lands<sup>5</sup></b>	<b>42,193</b>	<b>46,057</b>	<b>3,863</b>	<b>9.2%</b>
Agriculture	80,734	78,838	-1,897	-2.3%
Forest	103,098	100,926	-2,172	-2.1%
Extractive/Barren/Bare	89	300	211	238.5%
Wetland	14,265	14,259	-6	0.0%
<b>Total Resource Lands<sup>5</sup></b>	<b>198,186</b>	<b>194,322</b>	<b>-3,863</b>	<b>-1.9%</b>
Total Land	240,379	240,379		
Water	16,918	16,918		

	Land Use in Acres			Land Use Change
	1973 <sup>4</sup>	2002 <sup>3</sup>	2010 <sup>1,2</sup>	1973-2010 Acres
All Residential	8,467	32,950	35,652	27,184
All Non-Residential	4,276	9,243	10,405	6,129
<b>Total Developed Lands<sup>5</sup></b>	<b>12,744</b>	<b>42,193</b>	<b>46,057</b>	<b>33,313</b>
<b>Total Resource Lands<sup>5</sup></b>	<b>227,870</b>	<b>198,186</b>	<b>194,322</b>	<b>-33,548</b>
Total Land	240,614	240,379	240,379	
Water	16,683	16,918	16,918	

Land Use Change 1973 - 2010



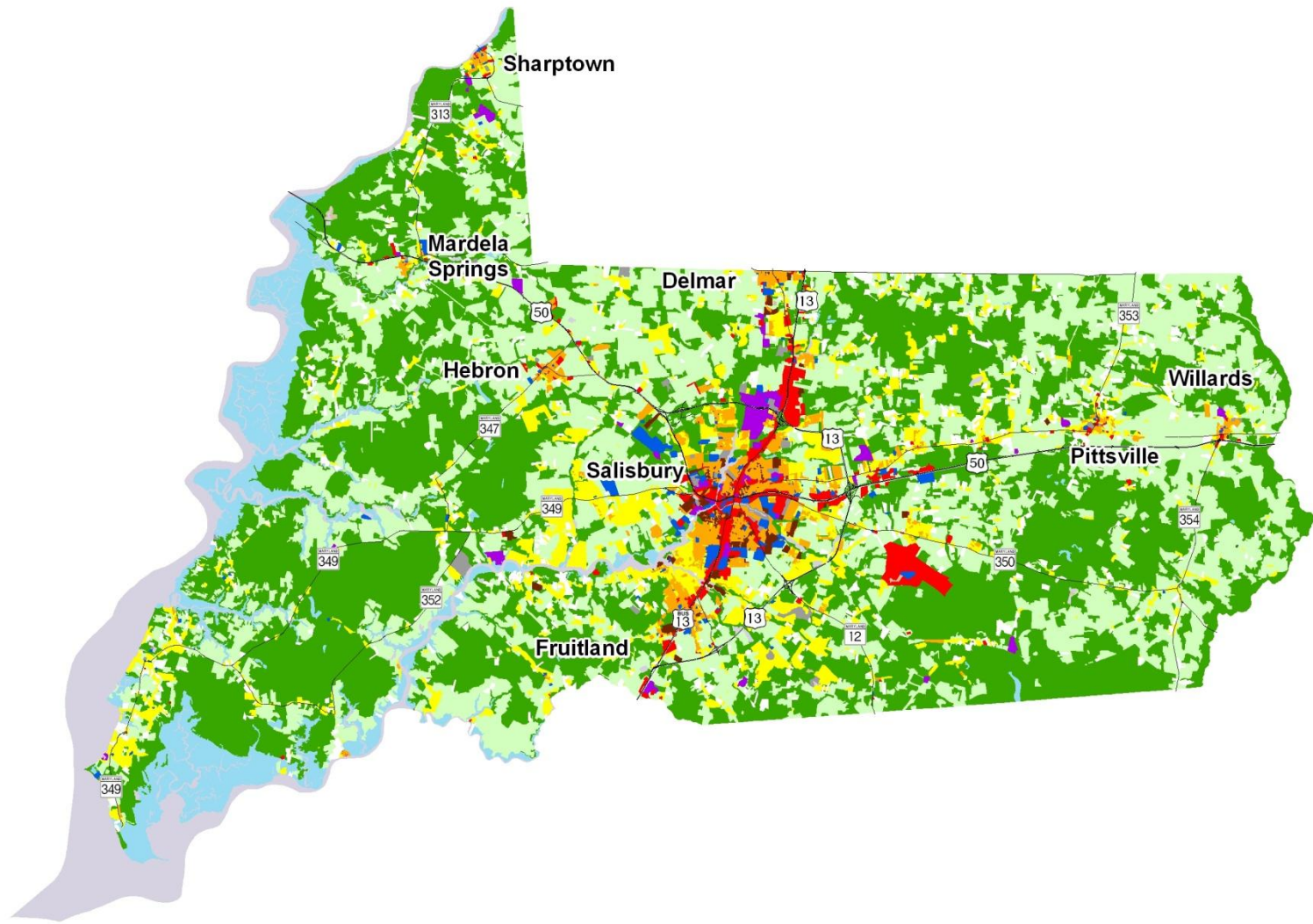
1. Two new categories have been added to the 2010 Land Use/Land Cover layer update; very low density residential development (191,192) and transportation (80).

2. Updates/modifications to the 2010 land use/land cover layers used the 2007 NAIP aerial imagery and parcel information from Maryland Property View 2008.

3. The original 2002 data were mapped using geo-rectified LANDSAT satellite imagery and 2000 MD Property View. In 2010 two new land use categories were added, transportation and very low density residential making it necessary to modify the 2002 land use/land cover layer to incorporate these categories for comparative purposes. Additionally, better imagery and property data information were used to make further modifications. The enhanced 2002 dataset is available upon request.

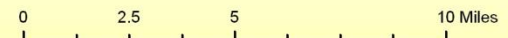
4. Very low density residential was not mapped in 1973, so there is no data associated with changes. Transportation was not mapped in 1973.

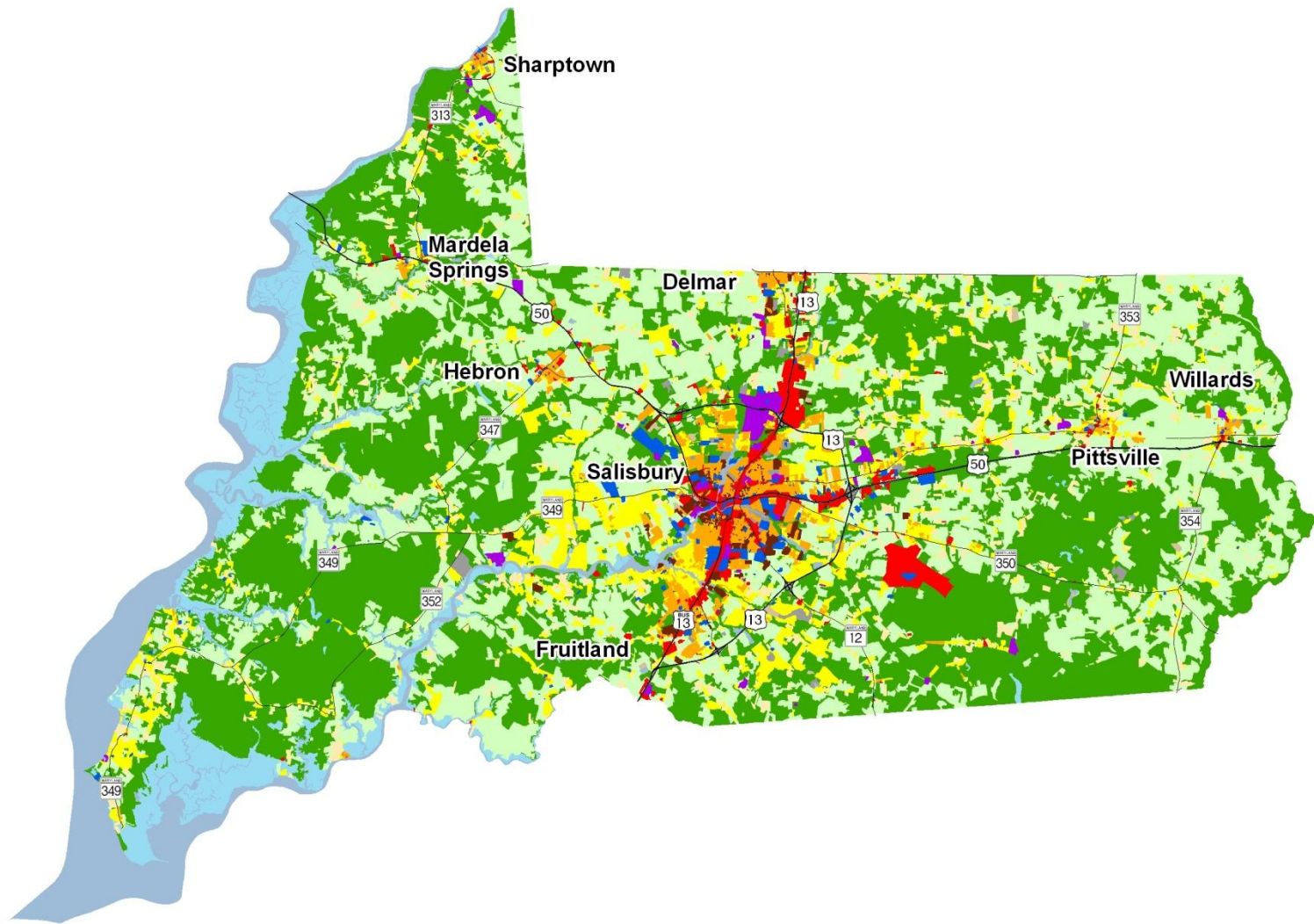
5. As noted above, new land use categories were added in 2010 and associated adjustments were made to 2002 data. Similar adjustments were not made to 1973 data, making it impossible to know how much change from 1973 is due to new development since then, versus misclassified land uses at that time. For these reasons, we suggest reliance only on change statistics for the aggregate land use categories, Total Developed and Total Resource Lands



## Wicomico County 2002 Land Use/Land Cover

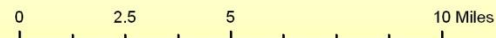
1) The original 2002 data were mapped using geo-rectified LANDSAT satellite imagery and 2000 MD Property View. In 2010 two new land use categories were added, transportation and very low density residential making it necessary to modify the 2002 land use/land cover layer to incorporate these categories for comparative purposes. Additionally, better imagery and property data information were used to make further modifications. The enhanced 2002 dataset is available upon request.

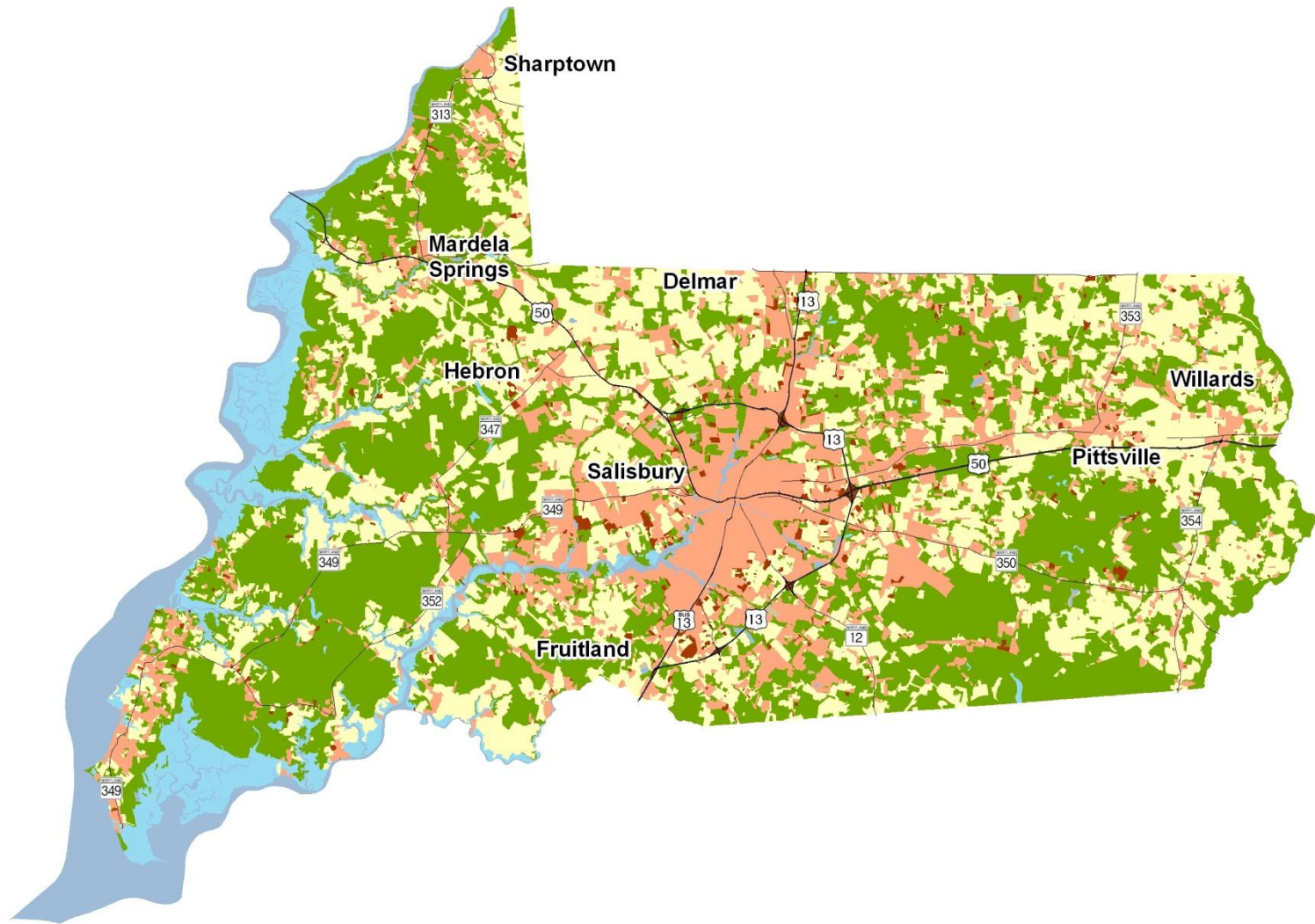




## Wicomico County 2010 Land Use/Land Cover

1) Two new categories have been added to the 2010 Land Use/Land Cover layer update; very low density residential development (191,192) and transportation (80).  
 2) Updates/modifications to the 2010 land use/land cover layers used the 2007 NAIP aerial imagery and parcel information from Maryland Property View 2008.





## Wicomico County New Development, 2002-2010

1) Updates/modifications to the 2010 land use/land cover layers used the 2007 NAIP aerial imagery and parcel information from Maryland Property View 2008.  
 2) The original 2002 data were mapped using geo-rectified LANDSAT satellite imagery and 2000 MD Property View. In 2010 two new land use categories were added, transportation and very low density residential, making it necessary to modify the 2002 land use/land cover layer to incorporate these categories for comparative purposes.

