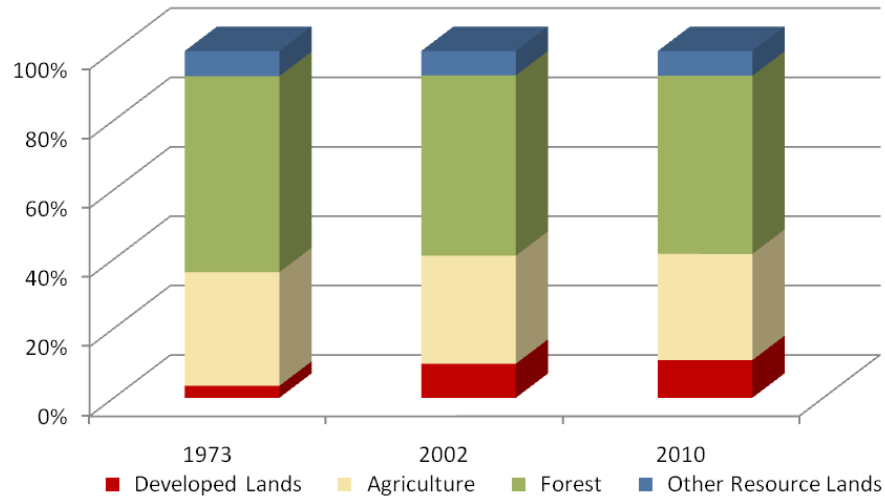


Worcester County

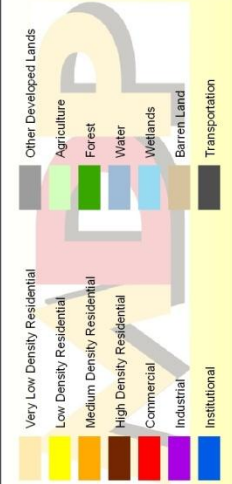
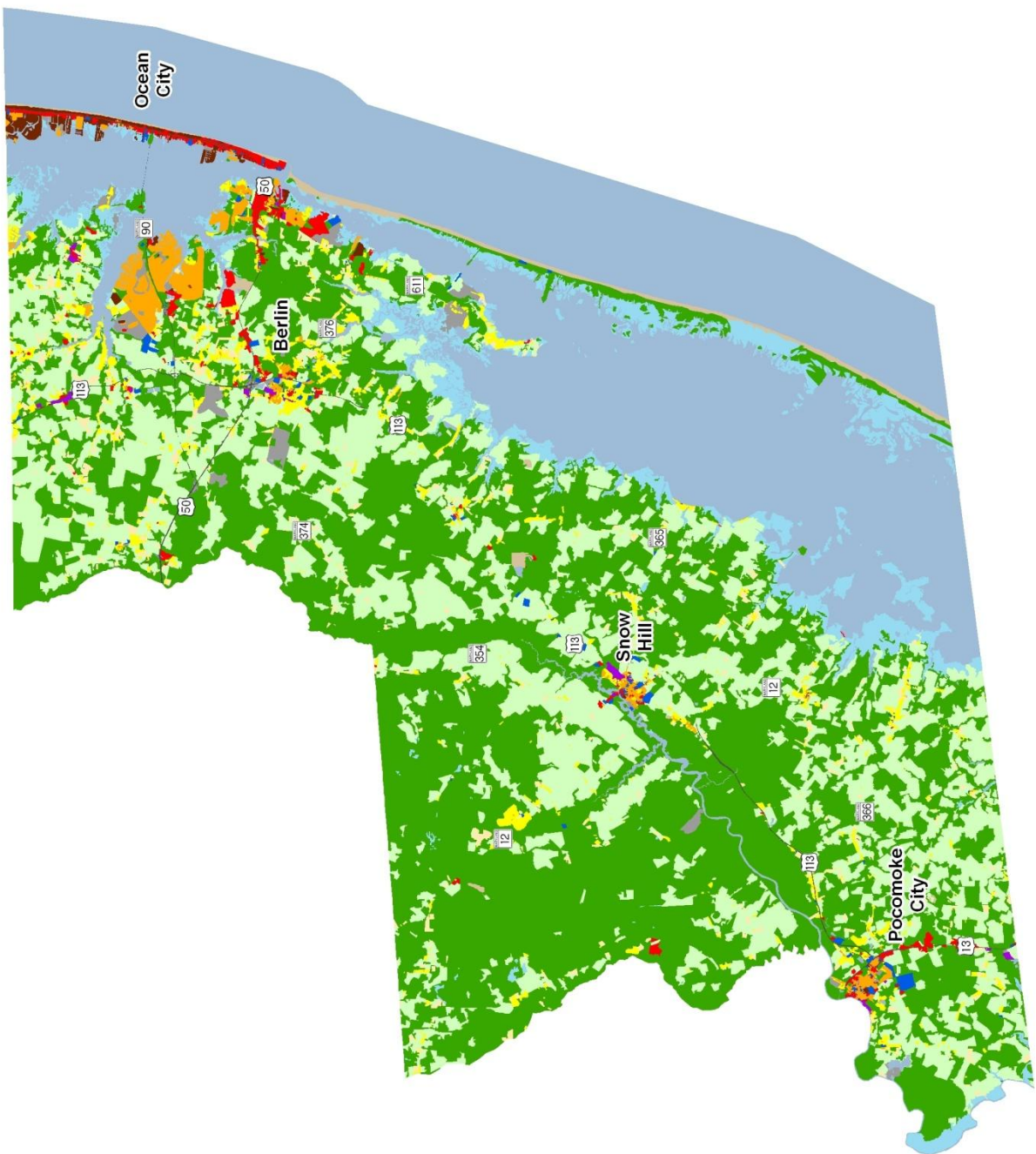
	Land Use in Acres		Land Use Change	
	2002 ³ Acres	2010 ² Acres	2002-2010 Acres	Percent
Very Low Density Residential ¹	6,605	7,036	431	6.5%
Low Density Residential	8,551	9,745	1,194	14.0%
Medium Density Residential	4,614	4,845	231	5.0%
High Density Residential	1,569	1,628	59	3.8%
Commercial	3,045	3,585	541	17.8%
Industrial	446	527	80	18.0%
Other Developed Lands/ Institutional/Transportation ¹	4,814	5,393	579	12.0%
Total Developed Lands⁵	29,644	32,759	3,115	10.5%
Agriculture	93,943	92,373	-1,571	-1.7%
Forest	156,976	155,021	-1,955	-1.2%
Extractive/Barren/Bare	2,497	2,958	461	18.5%
Wetland	18,658	18,607	-51	-0.3%
Total Resource Lands⁵	272,074	268,959	-3,115	-1.1%
Total Land	301,718	301,718		
Water	132,141	132,141		

	Land Use in Acres			Land Use Change
	1973 ⁴	2002 ³	2010 ^{1,2}	1973-2010 Acres
All Residential	6,794	21,339	23,254	16,460
All Non-Residential	3,578	8,305	9,505	5,928
Total Developed Lands⁵	10,371	29,644	32,759	22,388
Total Resource Lands⁵	291,274	272,074	268,959	-22,315
Total Land	301,645	301,718	301,718	
Water	132,214	132,141	132,141	

Land Use Change 1973 - 2010



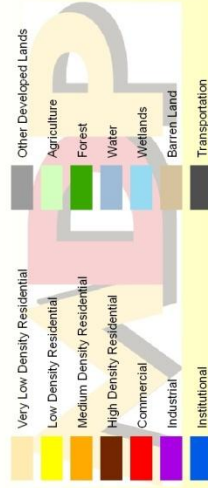
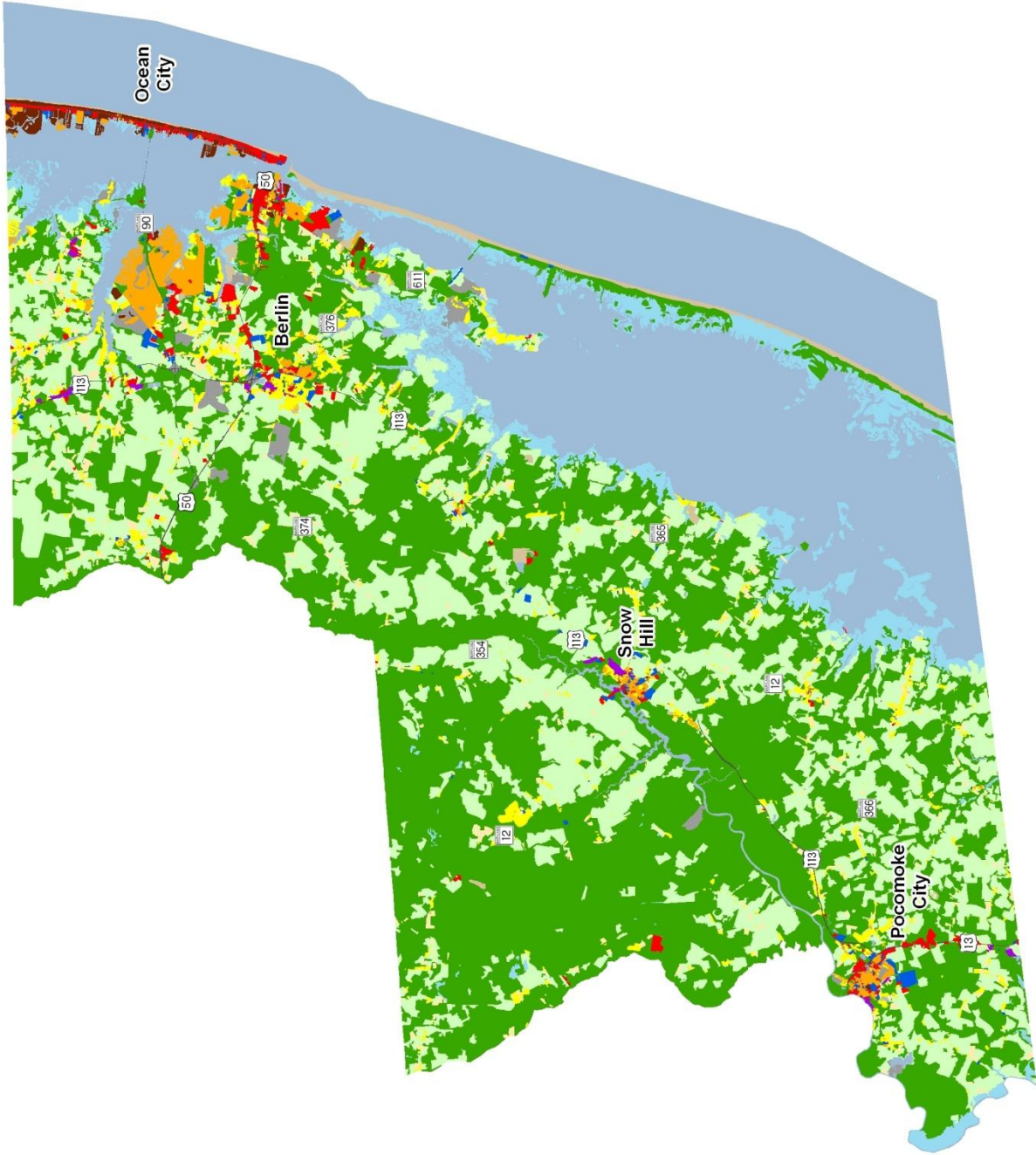
- Two new categories have been added to the 2010 Land Use/Land Cover layer update; very low density residential development (191,192) and transportation (80).
- Updates/modifications to the 2010 land use/land cover layers used the 2007 NAIP aerial imagery and parcel information from Maryland Property View 2008.
- The original 2002 data were mapped using geo-rectified LANDSAT satellite imagery and 2000 MD Property View. In 2010 two new land use categories were added, transportation and very low density residential making it necessary to modify the 2002 land use/land cover layer to incorporate these categories for comparative purposes. Additionally, better imagery and property data information were used to make further modifications. The enhanced 2002 dataset is available upon request.
- Very low density residential was not mapped in 1973, so there is no data associated with changes. Transportation was not mapped in 1973.
- As noted above, new land use categories were added in 2010 and associated adjustments were made to 2002 data. Similar adjustments were not made to 1973 data, making it impossible to know how much change from 1973 is due to new development since then, versus misclassified land uses at that time. For these reasons, we suggest reliance only on change statistics for the aggregate land use categories, Total Developed and Total Resource Lands



Worcester County 2002 Land Use/Land Cover

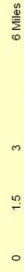
1) The original 2002 data were mapped using geo-rectified LANDSAT satellite imagery and 2000 MD PropertyView. In 2010 two new land use categories were added, transportation and very low density residential making it necessary to modify the 2002 land use/land cover layer to incorporate these categories for comparative purposes. Additionally, better imagery and property data information were used to make further modifications. The enhanced 2002 dataset is available upon request.

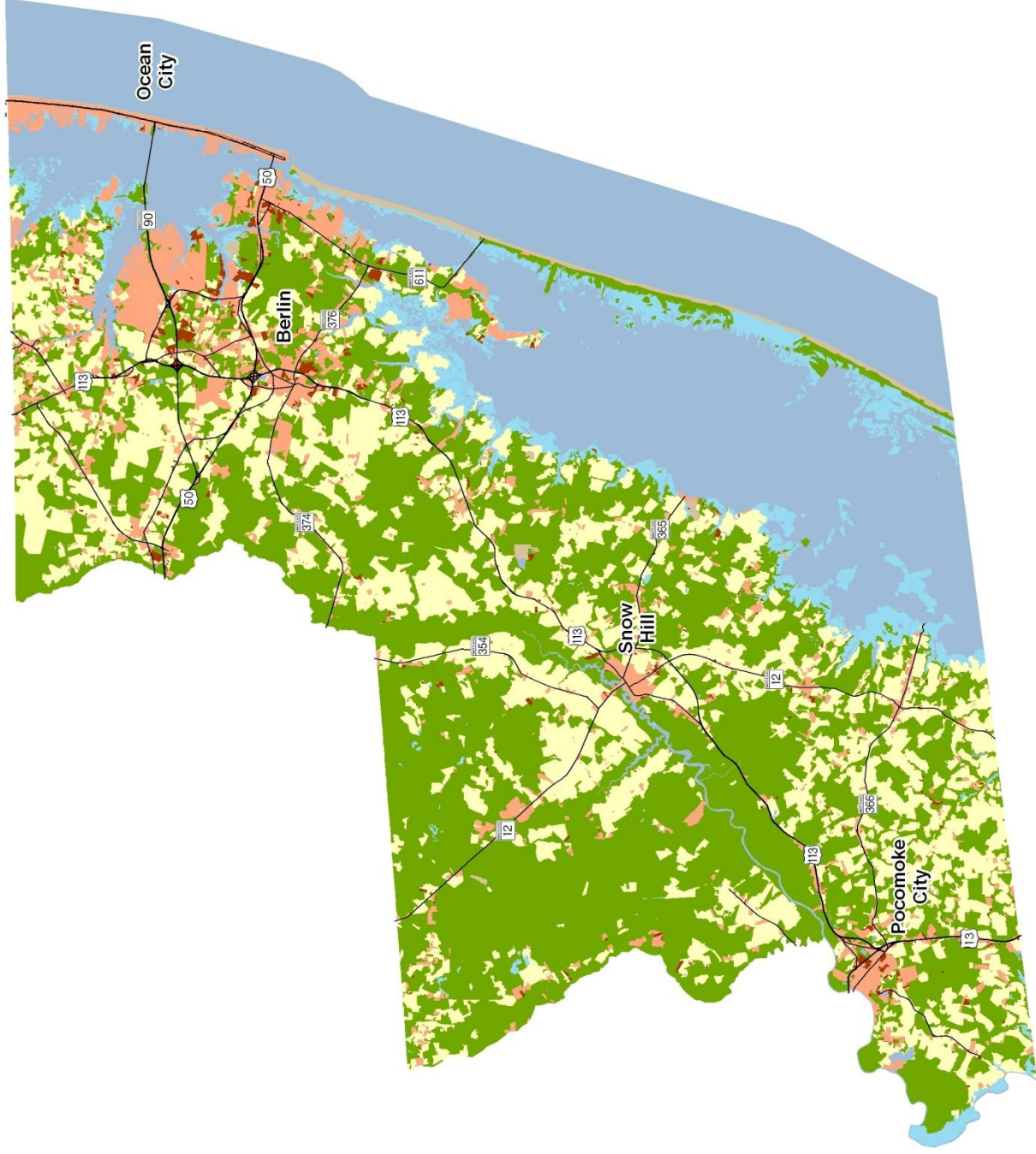




Worcester County 2010 Land Use/Land Cover

- 1) Two new categories have been added to the 2010 Land Use/Land Cover layer update; very low density residential development (191, 192) and transportation (60).
- 2) Updates/modifications to the 2010 land use/land cover layers used the 2007 NAIP aerial imagery and parcel information from Maryland Property View 2008.





1) Updates/modifications to the 2010 land use/land cover layers used the 2007 NAIP aerial imagery and parcel information from Maryland Property View 2008.
 2) The original 2002 data were mapped using geo-rectified LANDSAT satellite imagery and 2000 MD Property View. In 2010 two new land use categories were added, transportation and very low density residential, making it necessary to modify the 2002 land use/land cover layer to incorporate these categories for comparative purposes.



Worcester County New Development, 2002-2010

