

# Maryland Planning Directors' Roundtable

This webinar is brought to you by the  
**Maryland Department of Planning**

April 29, 2021



# Maryland Department of Planning

## Upcoming Webinars



- What is a Walkability Study, and Why Should You Do One? – April 29 @ 2 PM
- Equity in Policy and Practice: Addressing Past Inequities in Planning for the Future – April 30 @ 1 PM

**1.5 AICP CM at each webinar**

# Maryland Department of Planning



*The recording of today's PDR event will be on Planning's website under the Planning Directors' Roundtable web page, along with PDF's of the presentations*

# Q&A to Follow Presentation

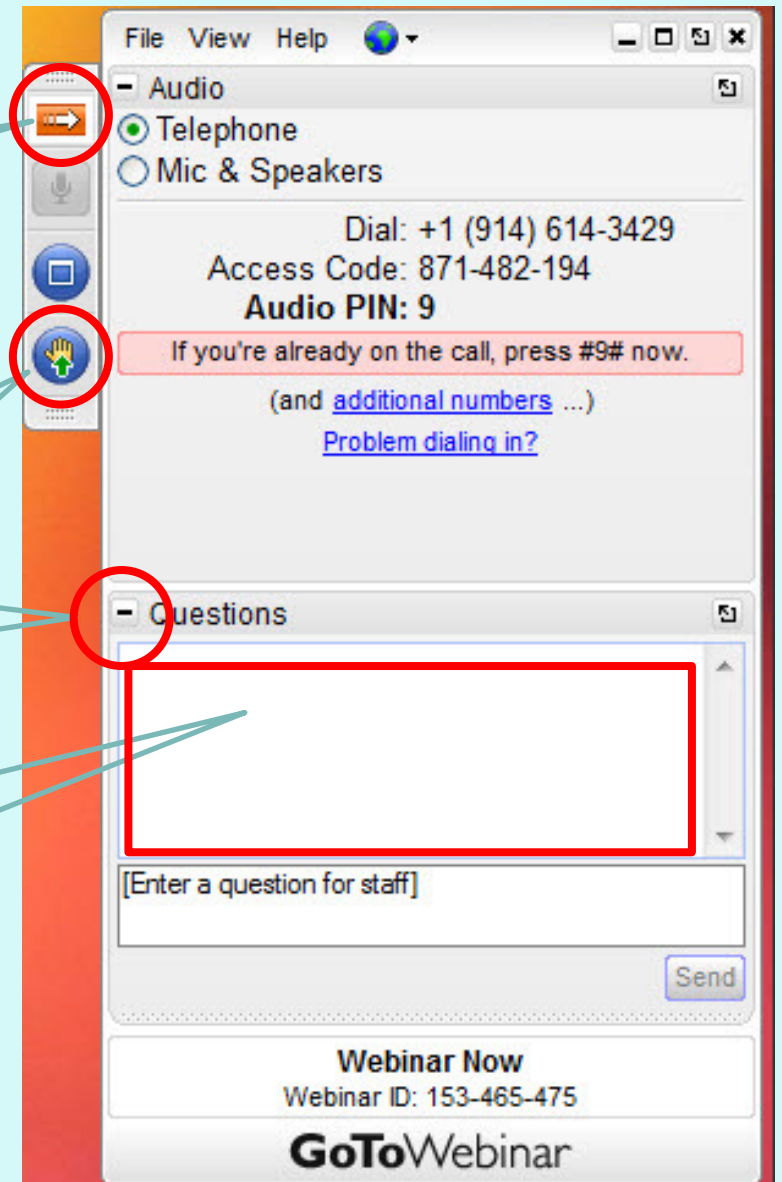
- Use the orange arrow icon to show and hide the GoToWebinar Control Panel
- Click the Hand tool to raise your hand
- Submit questions using the Questions tool in the control panel

Click orange arrow to Show/Hide the Control Panel

Click the Hand tool to raise your hand

Click - to open the Questions tool

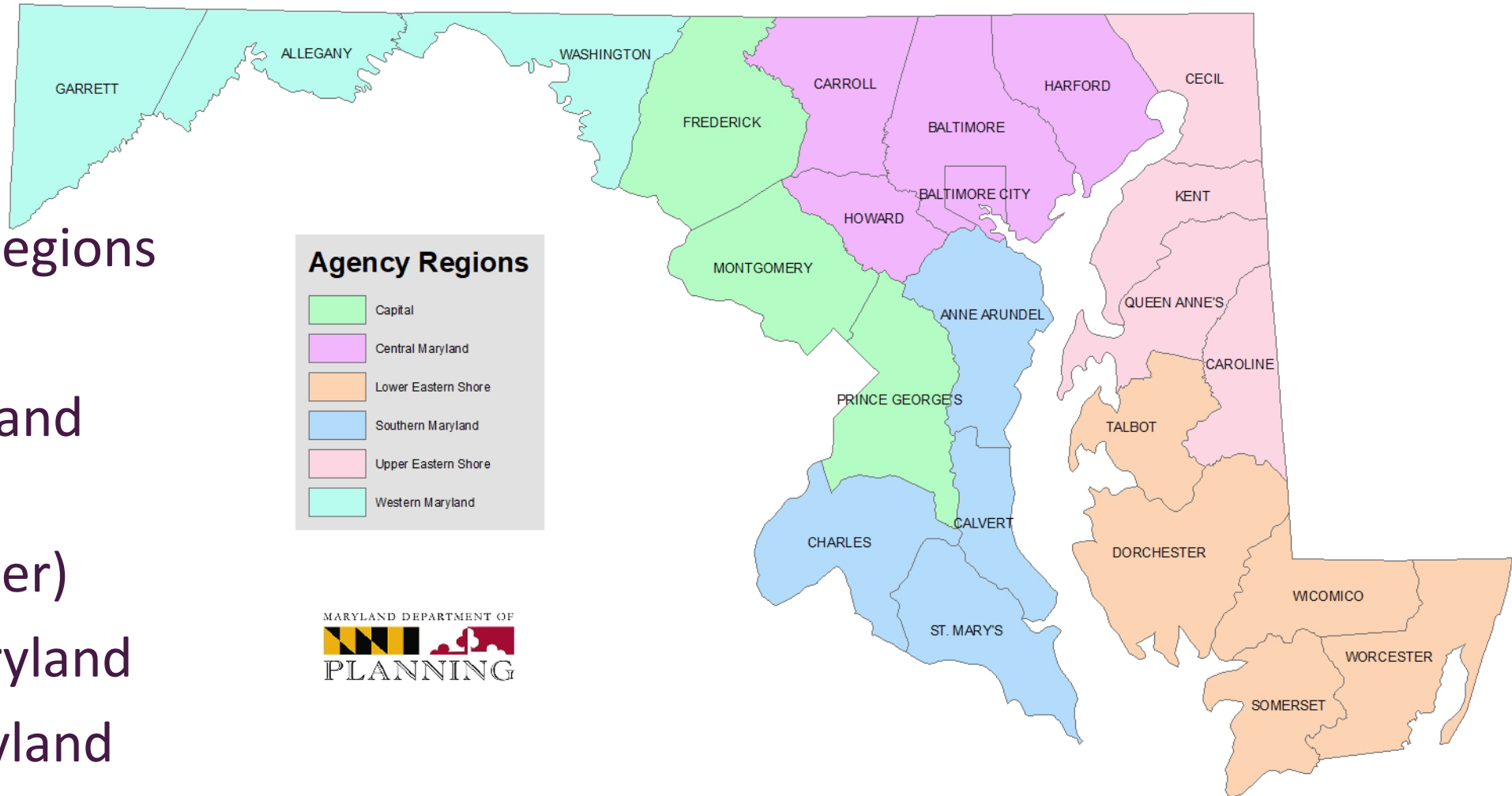
Type your question in the text box and click Send



The screenshot shows the GoToWebinar control panel interface. It features a vertical toolbar on the left with several icons: an orange arrow icon (circled in red), a microphone icon, a blue square icon, and a hand icon (circled in red). The main panel is divided into sections: 'Audio' with options for Telephone and Mic & Speakers; a dialing section with 'Dial: +1 (914) 614-3429', 'Access Code: 871-482-194', and 'Audio PIN: 9'; a red banner with the text 'If you're already on the call, press #9# now.' and a link for 'Problem dialing?'; a 'Questions' section with a large text input box (circled in red) and a 'Send' button; and a footer with 'Webinar Now', 'Webinar ID: 153-465-475', and the 'GoToWebinar' logo.

# What part of the State are you in?

Maryland Department of Planning Regions



## MDP's Planning Regions

- A. Capital
- B. Central Maryland
- C. Eastern Shore  
(Upper & Lower)
- D. Southern Maryland
- E. Western Maryland

# Today's Speakers



**Shawn Kimberly**  
Senior Transportation Planner  
Baltimore Metropolitan Council



**Dave Guignet**  
State NFIP Coordinator,  
MDE



**Meredith Hill**  
Chief, Innovative Planning  
& Performance Division,  
MDOT SHA



**Jessica Shearer**  
Consultant, MDOT SHA



**Kristy Fleischmann Groncki**  
BGE , Strategic Programs  
Manager

# Secretary Robert McCord

