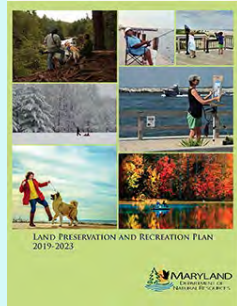
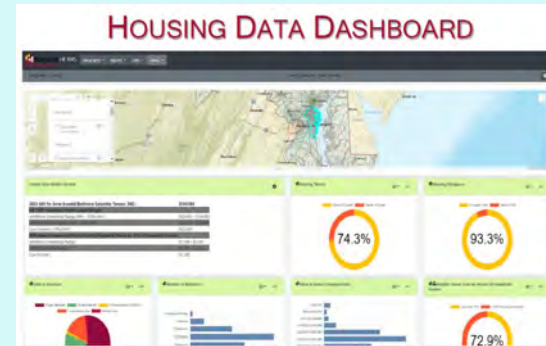
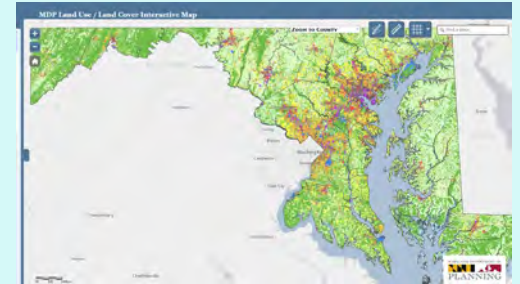


Updates on Planning & Other State Agency Initiatives



- 2022 Land Preservation, Parks, and Recreation Plan
- Statewide Building Permit Reporting System
- Generalized Zoning
- Statewide Land Use Map
- Housing Element Models & Guidelines
- Submissions Instructions Webpage
- MPCA Conference



2022 Land Preservation, Parks and Recreation Plan (LPPRP) Update

- LPPRP guidelines were finalized and distributed in May 2021.
- DNR and MDP are providing 1-2 check-ins each month with the LPPRP leads to answer questions, discuss obstacles, share each county's progress, provide ideas to assist each other.

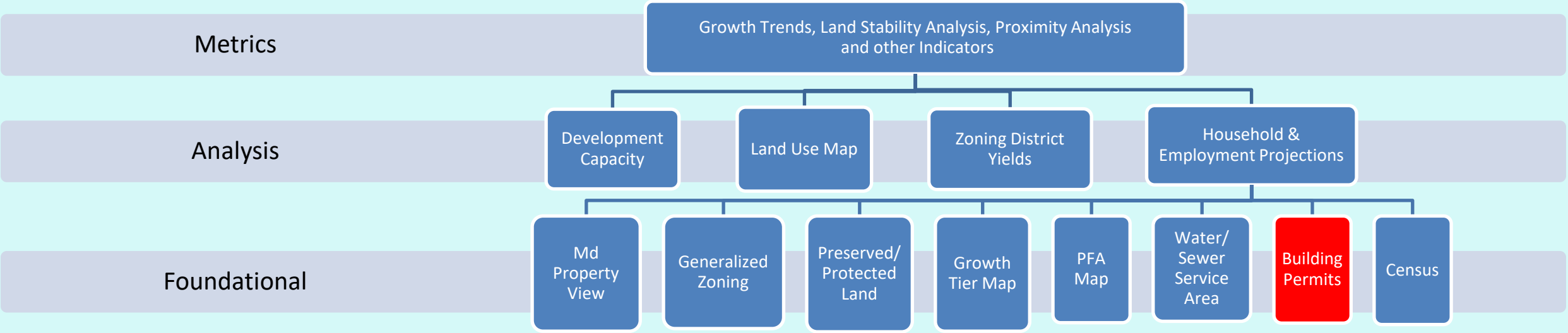


2022 Land Preservation, Parks and Recreation Plan (LPPRP) Update

- MDP and DNR will continue to offer two check-ins each month.
- Draft plans are due to MDP and DNR December 31, 2021.
- DNR and MDP will review draft plans and provide feedback throughout Spring 2022.
- Finalized county approved/adopted LPPRP will be submitted to DNR and MDP by July 1, 2022.



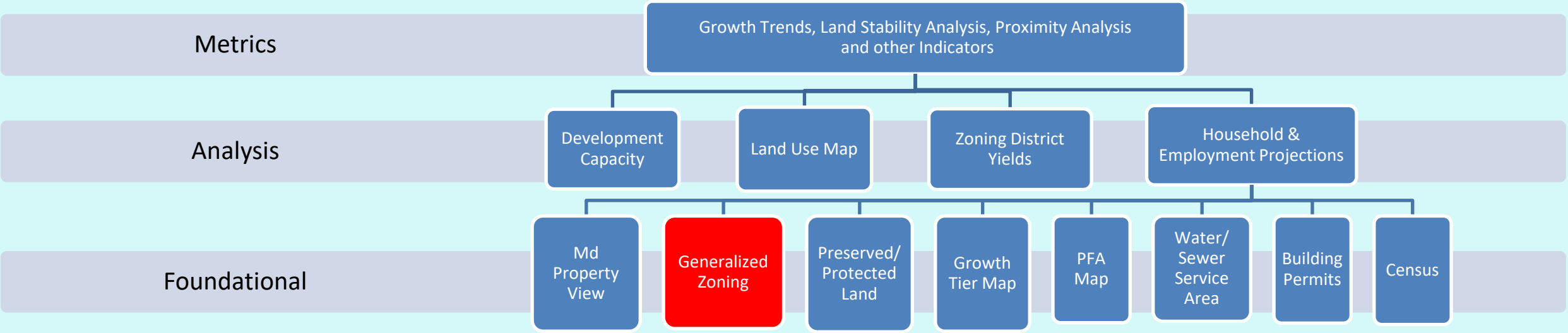
Rethinking Maryland's Growth Model Tools



Statewide Building Permit Reporting System

- The Statewide Building Permit Software Survey Report posted on Planning Coordination's webpage
- Planning staff working with BMC staff and the Baltimore jurisdictions on a prototype dashboard, similar to BMC's
- Next step finding interested jurisdictions for Phase II of the Statewide building permit project.

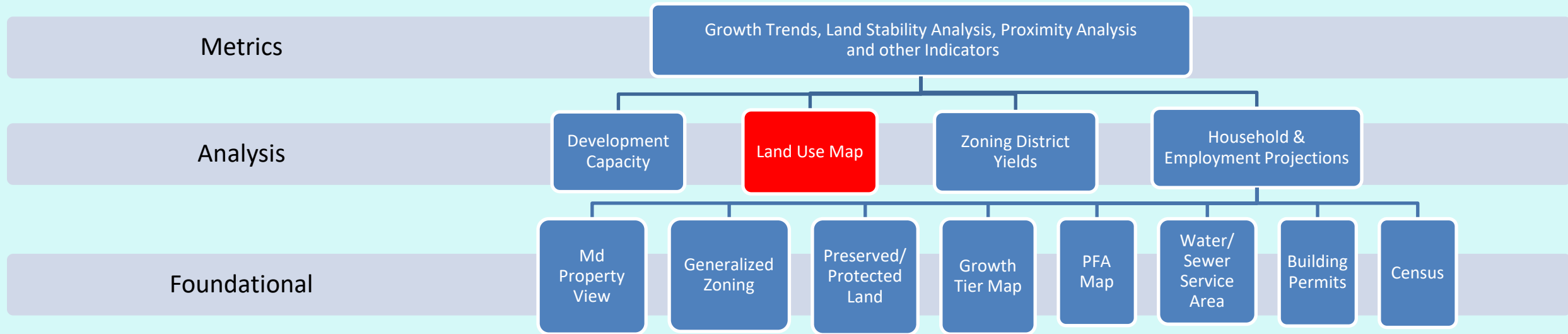
Rethinking Maryland's Growth Model Tools



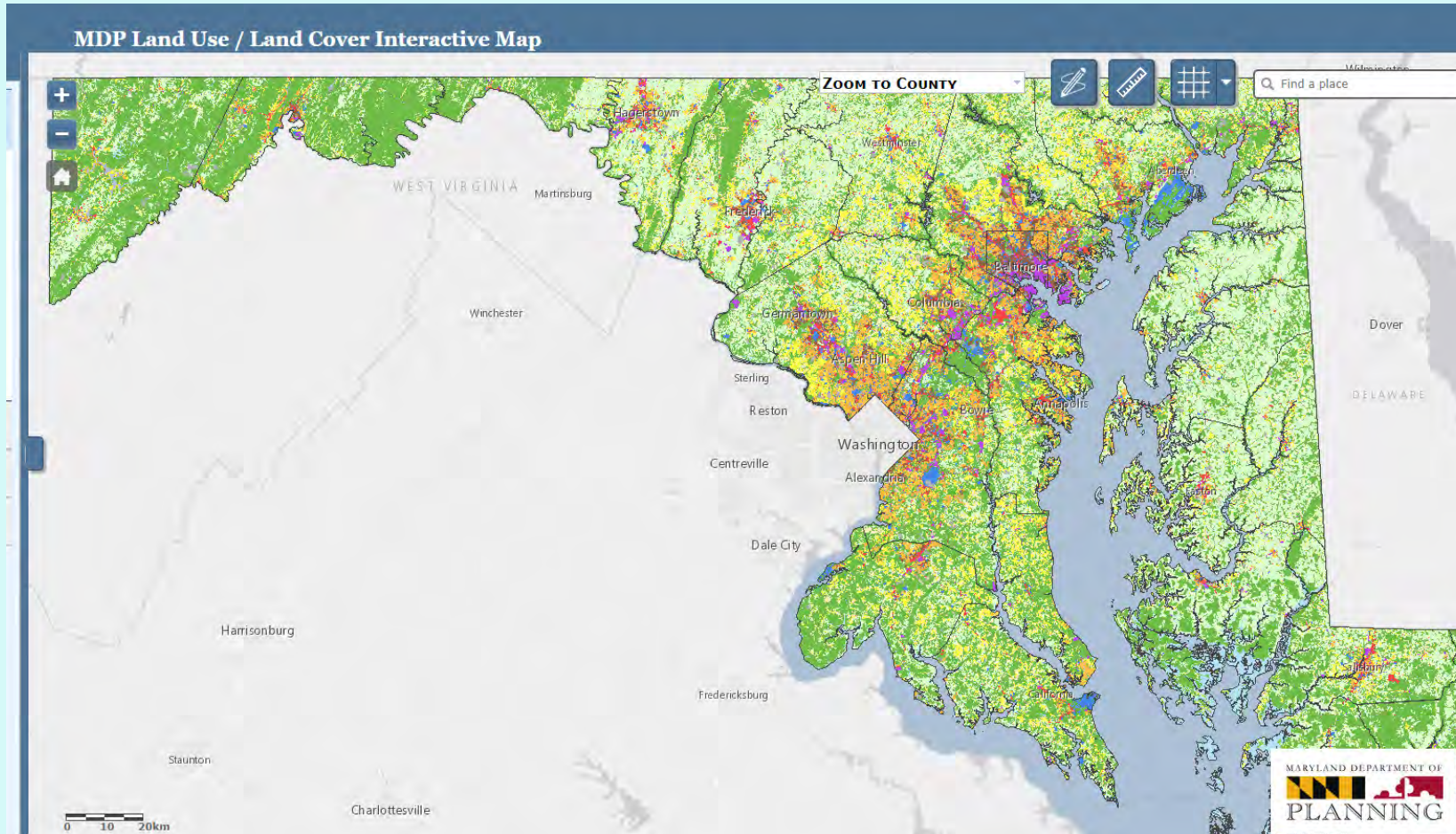
Generalized Zoning Updates

- Wrapping up the project
 - Final changes are incorporated
 - Available for final review late fall/early winter
- Regular updates to start in summer 2022
- For more information, please contact Shelly Aprill at Shelly.Aprill@Maryland.gov

Rethinking Maryland's Growth Model Tools



Statewide Land Use Map Update

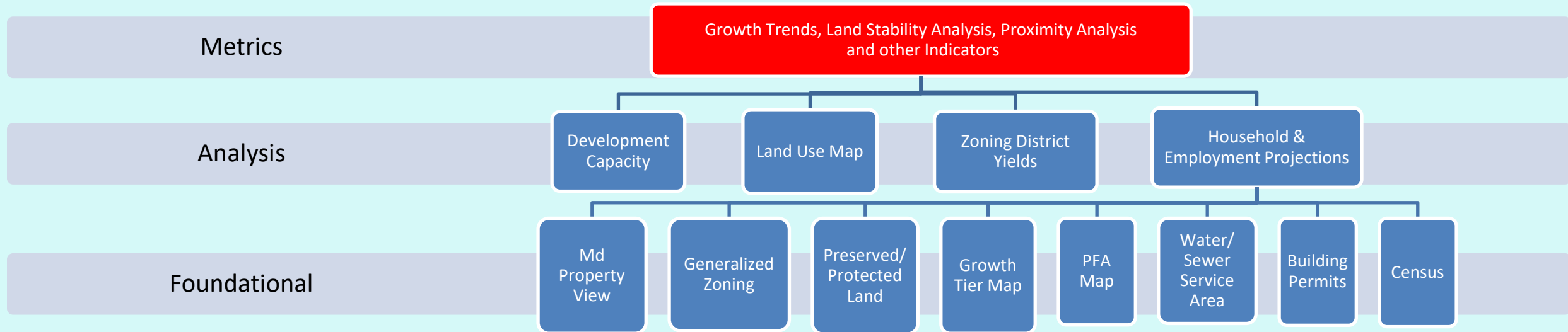


<https://planning.maryland.gov/Pages/OurWork/Land-Use/2020-land-use-map-update.aspx>

Statewide Land Use Map Update

- Next Steps
 - Incorporate 1-meter resolution land cover data from the Chesapeake Conservancy
 - Initiate reviews with local jurisdictions (rolling basis beginning Fall 2021)
- For more information, please contact Deborah Sward at deborah.sward@maryland.gov

Rethinking Maryland's Growth Model Tools



Housing Element Models & Guidelines Updates

- Completed Dashboard Updates
 - Added 2015-19 ACS data. Users can select between this and 2014-18 data, and the charts and reports will change accordingly
 - 2021 AMI Data
- Under Construction
 - Housing Needs Assessment Layer (DHCD)
 - Sample Dashboard Analysis
 - Compare Function
 - Very Low Income on AMI Table
- Other Updates
 - Best Practice Write Ups
 - HB 90

The screenshot shows the Maryland HB 1045 dashboard. At the top, there are navigation tabs for 'Geography', 'Reports', 'Links', and 'About'. Below this, a 'Geography : County' section shows 'Current Selection : Prince George's' and 'Census Year : 2019'. A map of Maryland is displayed with Prince George's County highlighted in blue. Below the map, there are two main sections: 'County Area Median Income' and 'Realty Trac County Foreclosures'. The 'County Area Median Income' section includes a table for '2021 AMI for Prince George's [Washington-Arlington-Alexandria, DC-VA-MF HUD Metro] : \$129,000' and 'HB 1045 Household Income Levels/Ranges'. The 'Realty Trac County Foreclosures' section includes a table with columns for 'Year', 'Average DOM', and 'Total F'.

2021 AMI for Prince George's [Washington-Arlington-Alexandria, DC-VA-MF HUD Metro] : \$129,000	
HB 1045 Household Income Levels/Ranges	
Workforce Ownership Range (60% - 120% AMI) :	\$77,400 - \$154,800
Workforce Rental Range (50% - 120% AMI) :	\$64,500 - \$154,800
Low Income (< 60% AMI) :	\$77,400
Affordable Homeowner/Rental Monthly Payments (Based on 30% of Household Income)	
Workforce Ownership Range :	\$1,871 - \$3,741
Workforce Rental Range :	\$1,559 - \$3,741
Low Income :	\$1,871

Year	Average DOM	Total F
2011	97	
2012	81	
2013	55	
2014	49	
2015	49	
2016	47	
2017	78	
2018	37	
2019	37	

Other Planning Updates

[Submissions Instructions and Guidance Page](#)

mdp.planreview@maryland.gov.

- Comprehensive Plans
- Annexations
- PFA Certifications
- Water and Sewer Plans

Review Period

Submission Requirements

Submission Process/Contacts

[38th Annual MPCA Conference is Going Virtual](#)



October 25, 26, and 27

[Free Registration](#)

Snapshot Maryland: Transportation Planning Dashboard



- The [Snapshot Maryland Transportation Planning Dashboard](#) displays demographic, employment, commuting and other transportation planning information, aggregated at the:
 - County
 - U.S. Census Designated Place (CDP) & Incorporated Place (CIP)
 - Census Tract
 - Traffic analysis zone (TAZ)
- The Transportation Planning dashboard represents the first product in the Snapshot Maryland suite of dashboards. Benefits include:
 - Consistent design elements across dashboards (i.e., responsive web design, downloadable data, changelog, help documentation, etc.)
 - Streamlined data development and maintenance processes
 - Use of analytics and surveys for continuous product improvement

Contacts

Andrew Mengel
Stewardship & Planning Administrator, DNR
Ph: 443-569-2827
Email: Andrew.Mengel@Maryland.gov

Deborah Sward
Assist. Manager, Geospatial Data & Analysis
Ph: 410-767-4964
Email: Deborah.Sward@Maryland.gov

Joe Griffiths, AICP
Manager, Local Assistance and Training
Ph: 410-767-4553
Email: Joseph.Griffiths@Maryland.gov

Shelly Aprill
Planner, Geospatial & Data Analysis
Ph: 410-767-4474
Email: Shelly.Aprill@Maryland.gov

Chuck Boyd, AICP
Director, Planning Coordination
Ph: 410-767-1401
Email: Chuck.Boyd@Maryland.gov

Thank you for joining us!



Maryland

DEPARTMENT OF PLANNING

*A recording of webinar will be posted on
Planning.Maryland.gov*