



Department of Planning & Land Management

203 S. Fourth St. – Room 210

Oakland, Maryland 21550

Phone: 301-334-1920 - Fax: 301-334-5023

E-mail: planning@garrettcountry.org

May 3, 2016

Dave Cotton
MD Dept of Planning
113 Baltimore St, Ste 302
Cumberland MD 21502

Dear Mr. Cotton,

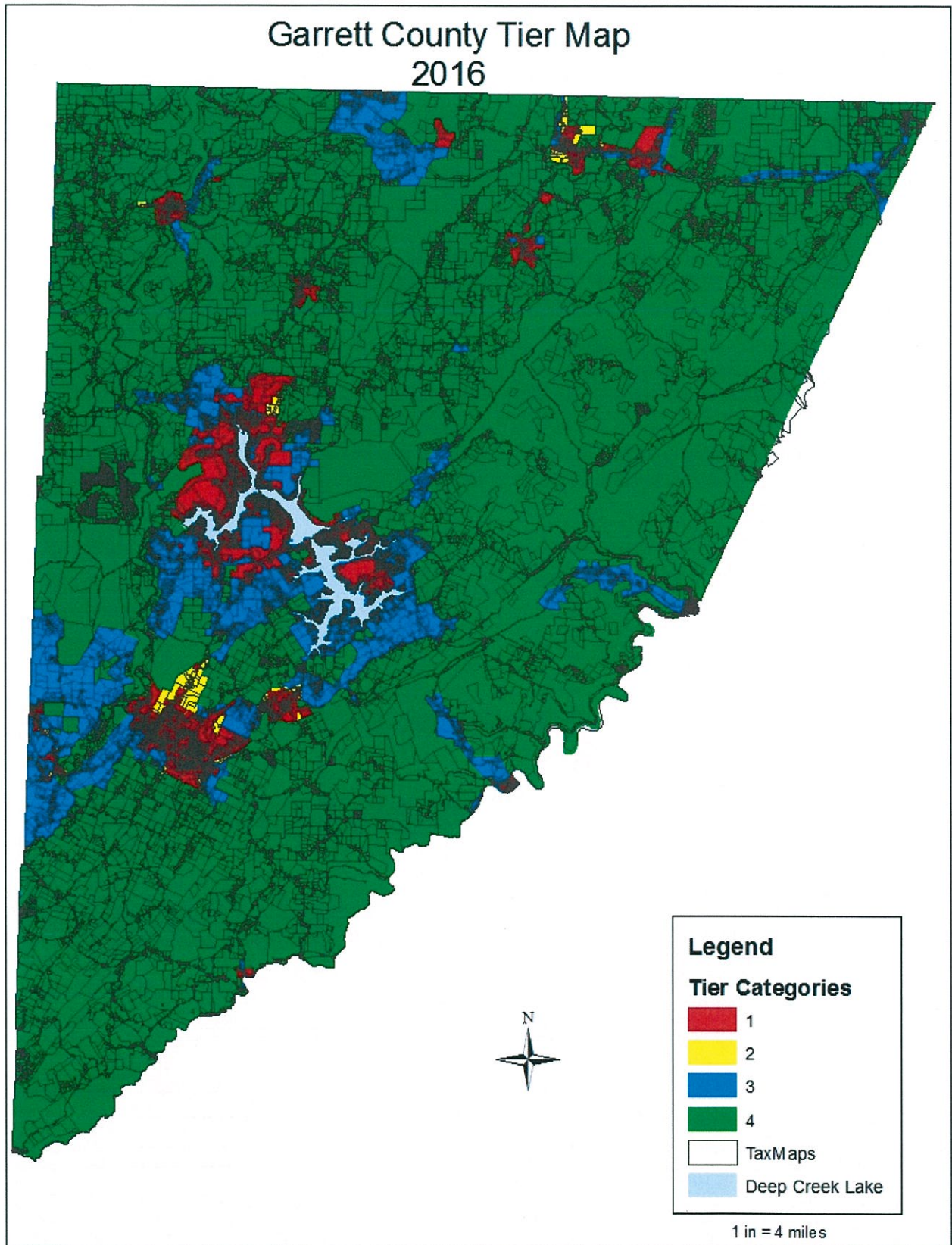
I would like to officially request to begin the state 60 day review process of our tier map inclusion in the Comprehensive Plan. If you need any additional information please let me know.

Sincerely,

A handwritten signature in cursive script that reads "Deborah A. Carpenter".

Deborah A. Carpenter
Director

Map 3.12: Garrett County Tier Map



(Change the last section number in Chapter 3 from 3.6 Policies and Actions to 3.7 Policies and Actions)
(Insert on page 3-38)

3.6 State Land Use Policies

This section incorporates the Garrett County Tier Map into the Comprehensive Plan. The Maryland General Assembly approved the Sustainable Growth & Agricultural Preservation Act of 2012 (Senate Bill 236) during the 2012 General Assembly session. The law, which took effect on July 1, 2012, is sometimes referred to as the Septic Bill since it seeks to limit the spread of residential development on septic systems.

The Act required all jurisdictions, including Garrett County, to adopt land use categories called Tiers. The Tiers were created based on certain criteria in the Act that established where major and minor residential subdivisions may be located and what type of sewerage system will serve them. The Garrett County Commissioners adopted the final tier map on December 4, 2012. All subdivisions submitted on or after December 31, 2012 must comply with the Tier map and other provisions of the Act.

Minor corrections to the Tier Map were made and adopted by the Board of County Commissioners on *May 2, 2016*. The corrections were made to more accurately reflect the contents of the Water & Sewer Master Plan which was adopted after December of 2012.