

PlanMaryland

Report on Draft Plan
Sustainable Growth Commission
March 28, 2011



Why Plan

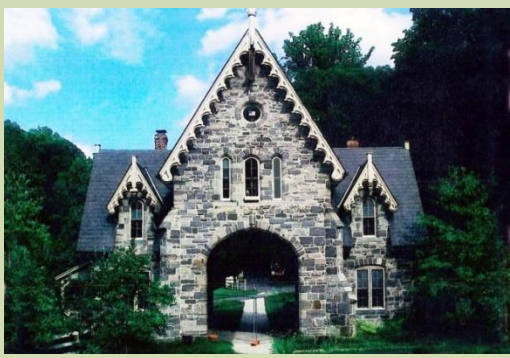
By 2030 there will be:

1,000,000 new residents

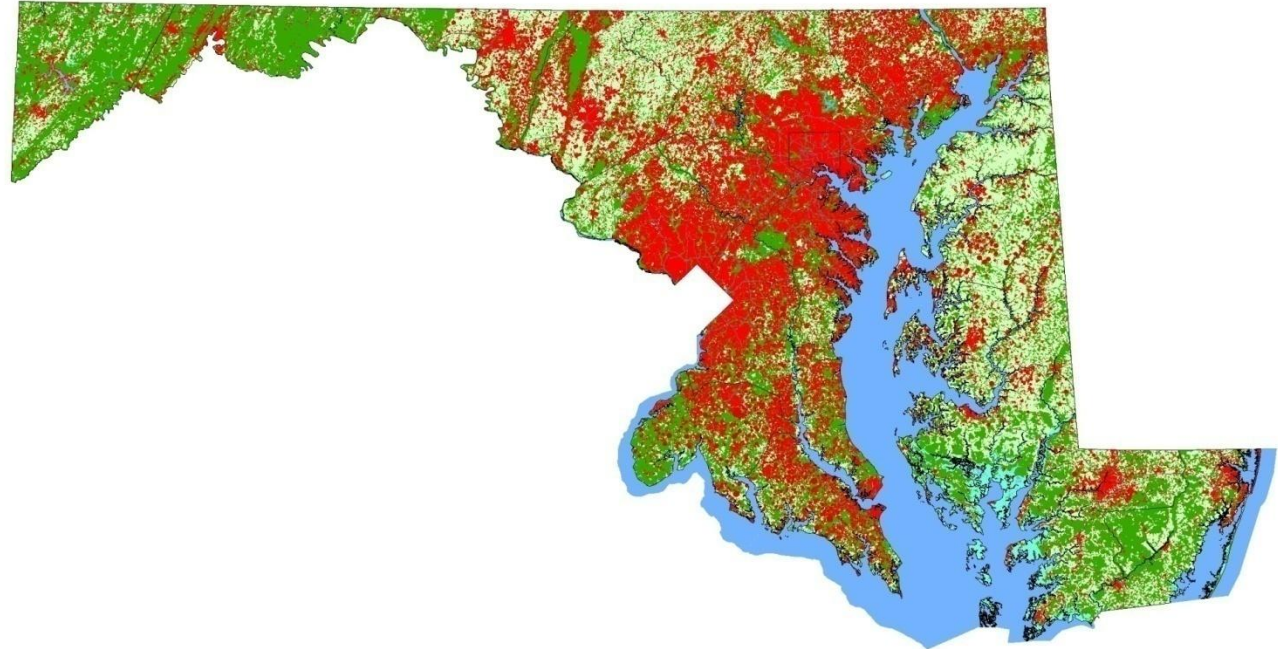
400,000 new homes



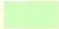
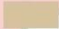

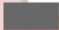

600,000 new jobs





**Why
Now?
400,000
acres of
forest and
farmland are
at stake**



- | | |
|--|--|
|  Developed |  Water |
|  Agriculture |  Barren Land |
|  Forest |  Transportation |
|  Wetlands | |

State of Maryland
Development, 2030
Current Trends Scenario

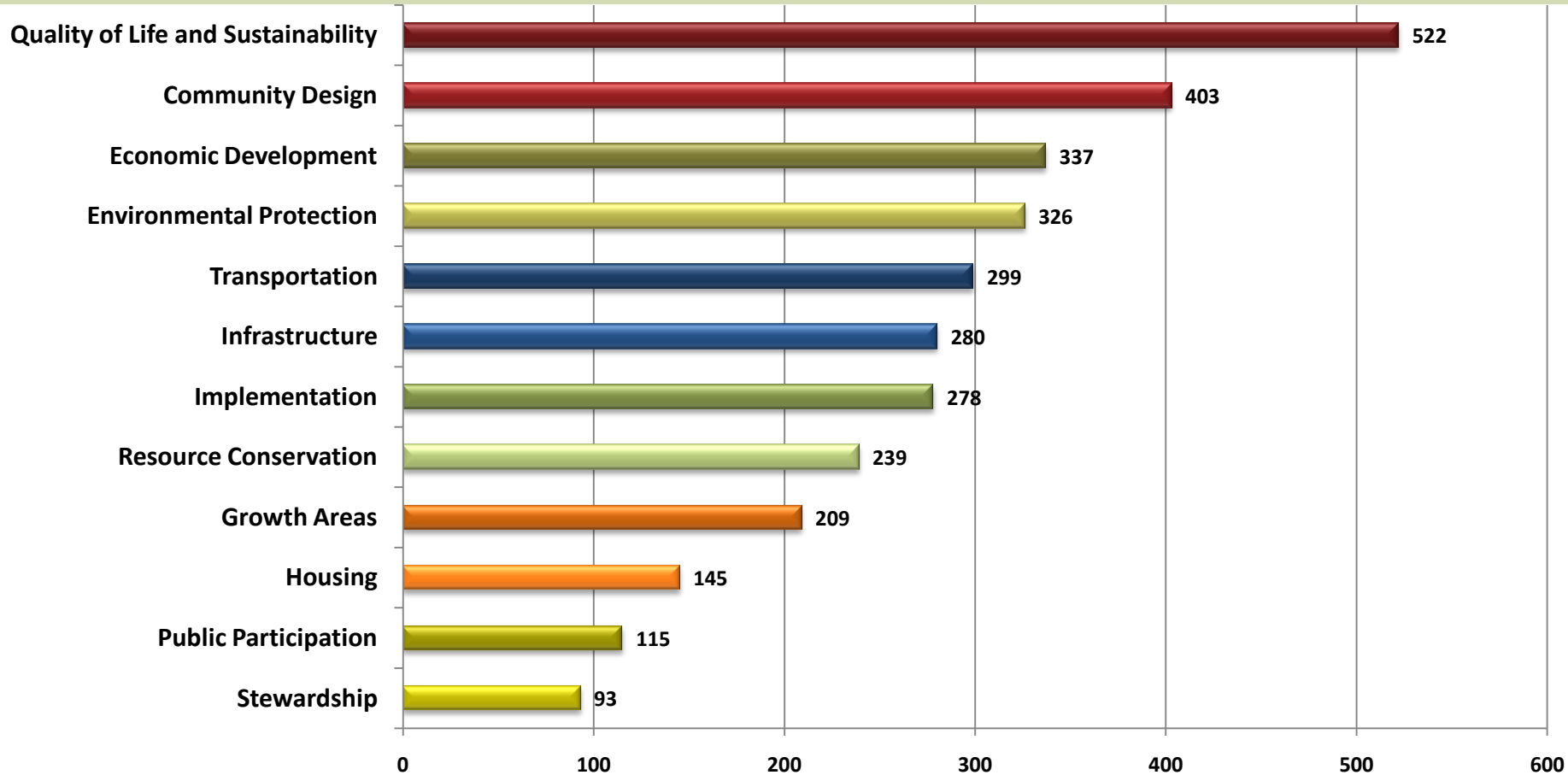
Maryland Department of Planning
Land Use Planning and Analysis Division
Map Created September 2010

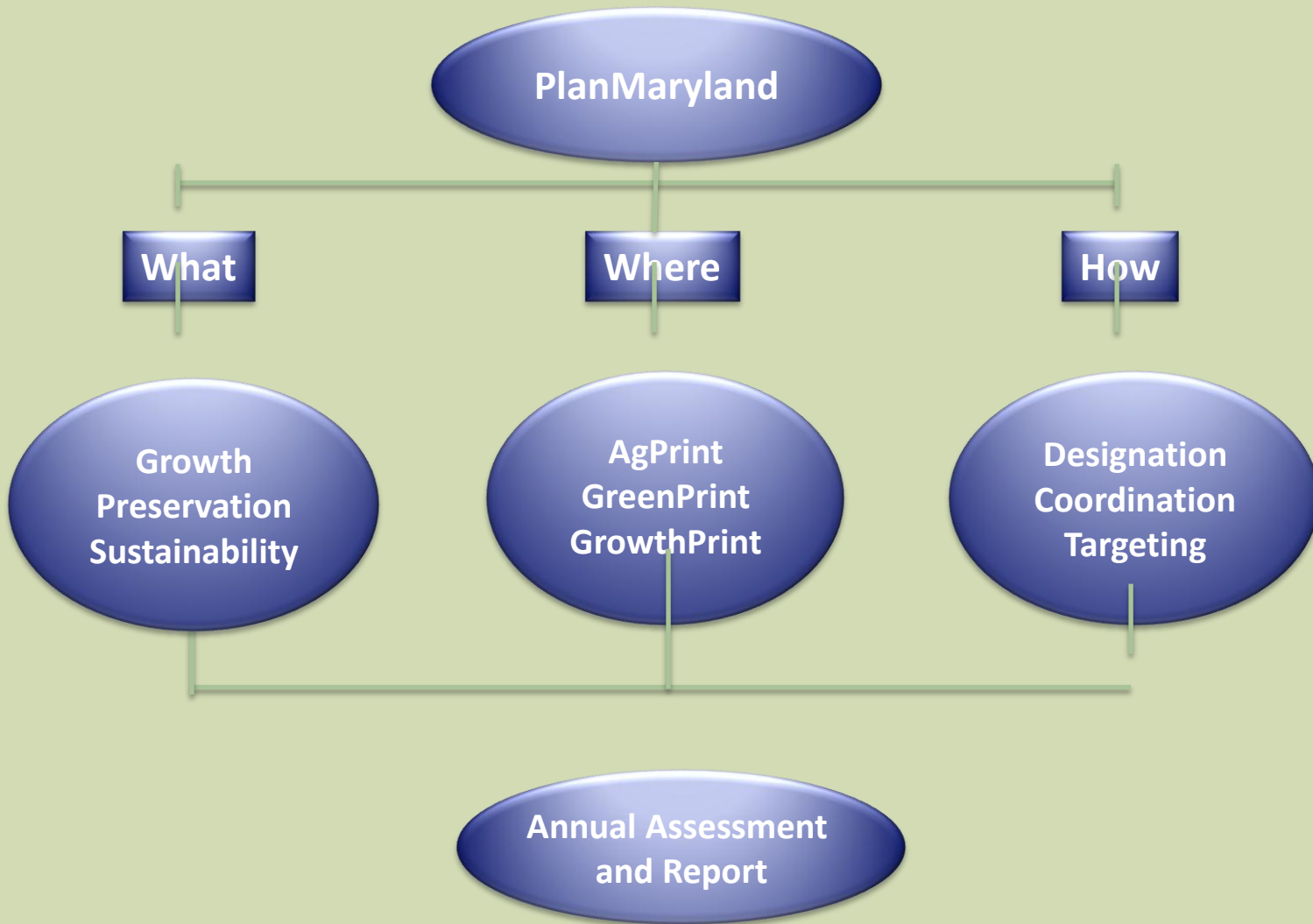


Public Involvement



What we Heard vision Rankings at Spring 2010 Forums





PlanMaryland Visions and Goals

12 Visions – per 2009 Legislation

3 Goals:

Growth - Concentrate development and redevelopment in towns, cities and rural centers where there is existing and planned infrastructure.

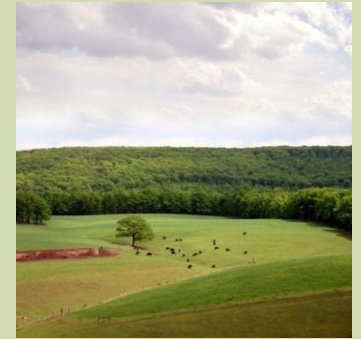
Preservation - Preserve and protect environmentally sensitive and rural lands and resources from the impacts of development.

Sustainability - Ensure that a desirable quality of life in Maryland's communities and rural areas is sustainable.



PlanMaryland Objectives

- Better Coordination of State and local plans
- Identification of priority areas for State and local efforts
- Reorientation of State plans
- Growth in desirable communities
- Identify and preserve resources
- Access to jobs and housing
- Minimize sprawl
- Reduce energy consumption
- Ensure consistency with goals
- Evaluate Progress



PlanMaryland Won't

Supplant local land use authority

Mandate zoning changes

Immediately resolve issues like adequate public facilities, public sentiments regarding growth, and limited public funding





Growth and Preservation Areas

GrowthPrint Areas

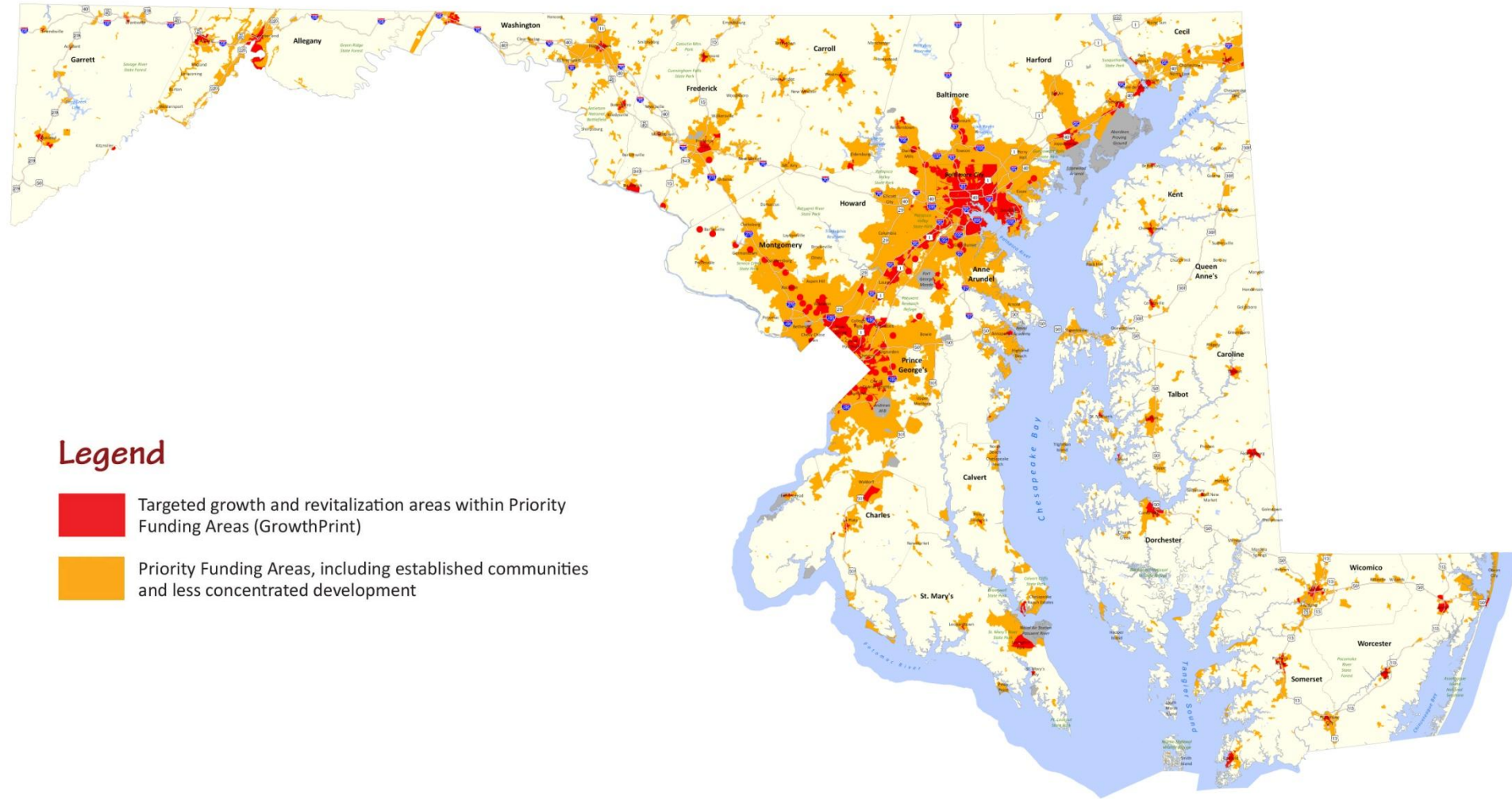
Legend



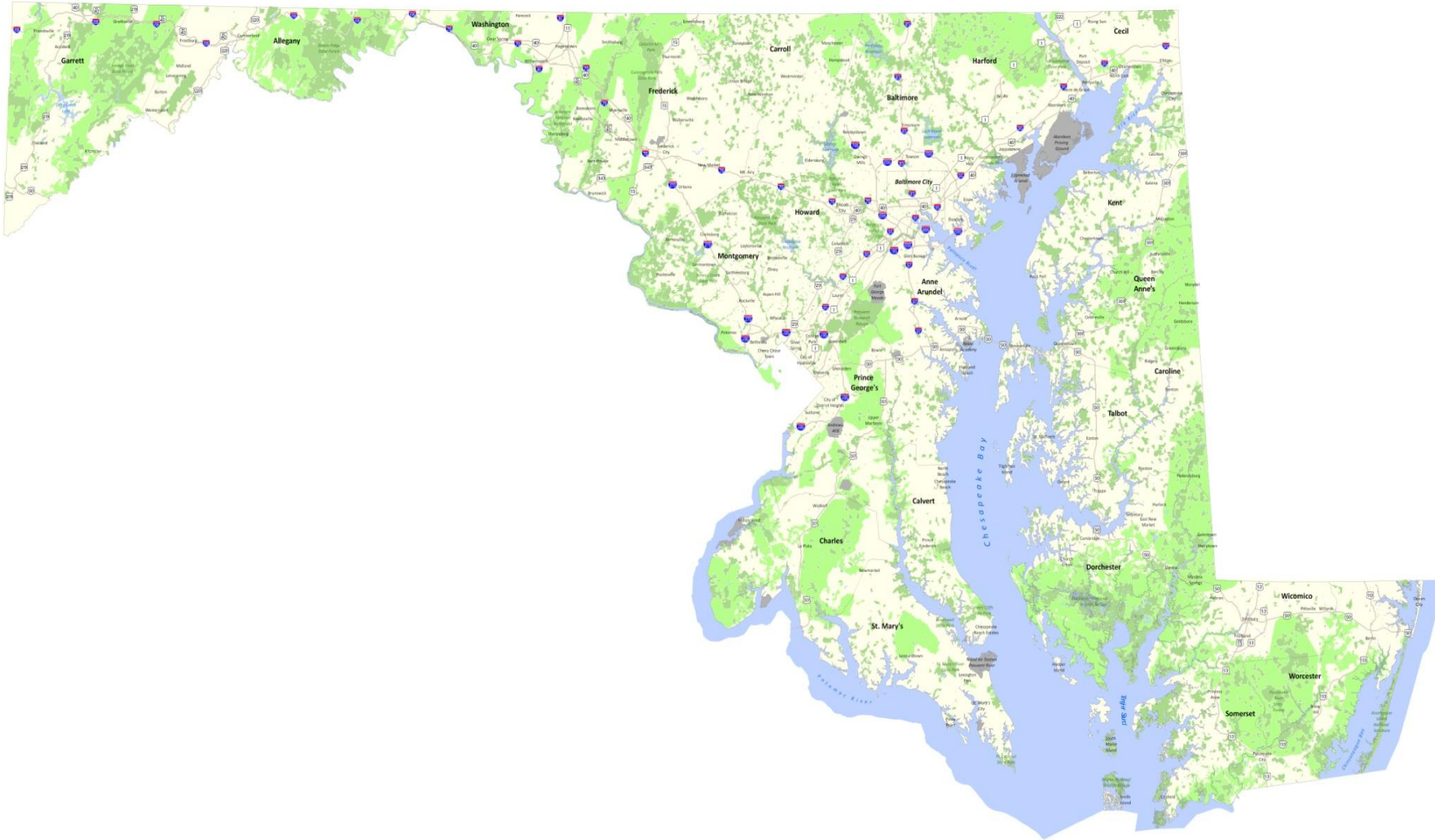
Targeted growth and revitalization areas within Priority Funding Areas (GrowthPrint)



Priority Funding Areas, including established communities and less concentrated development



GreenPrint Areas

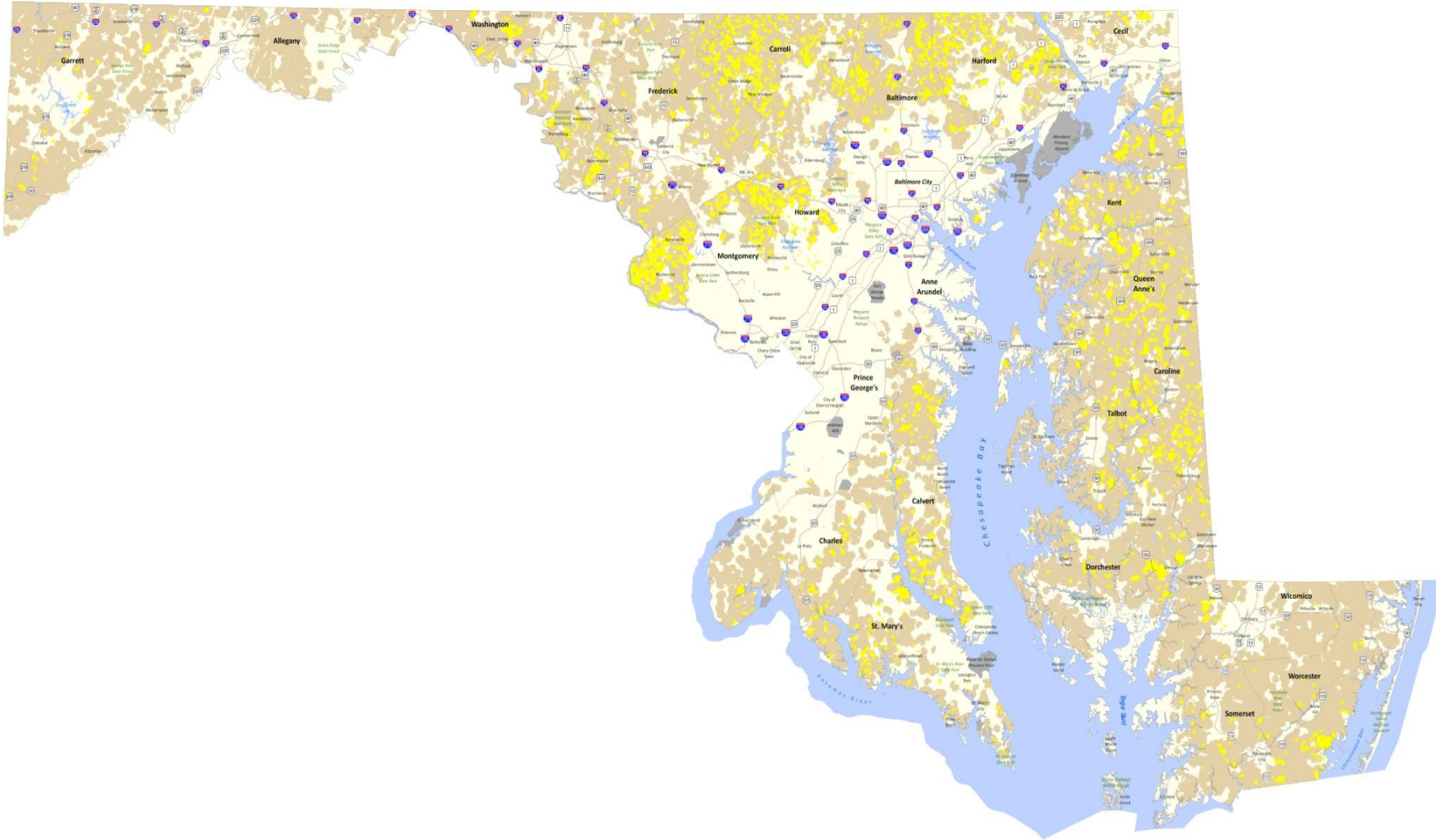


 Unprotected Targeted Ecological Areas
 Protected Lands

0 10 20 Miles



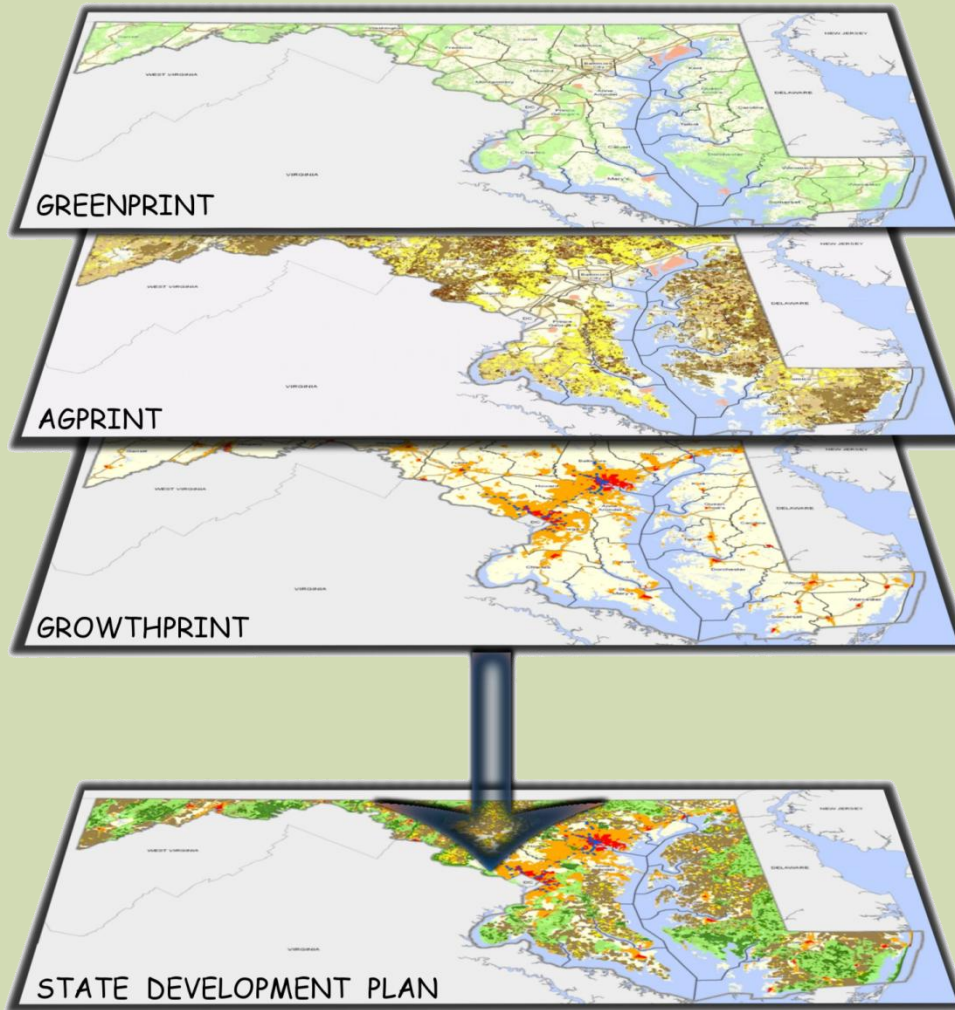
AgPrint Areas



■ Permanently Preserved Agricultural Lands
■ Targeted Agricultural Area

0 10 20 Miles

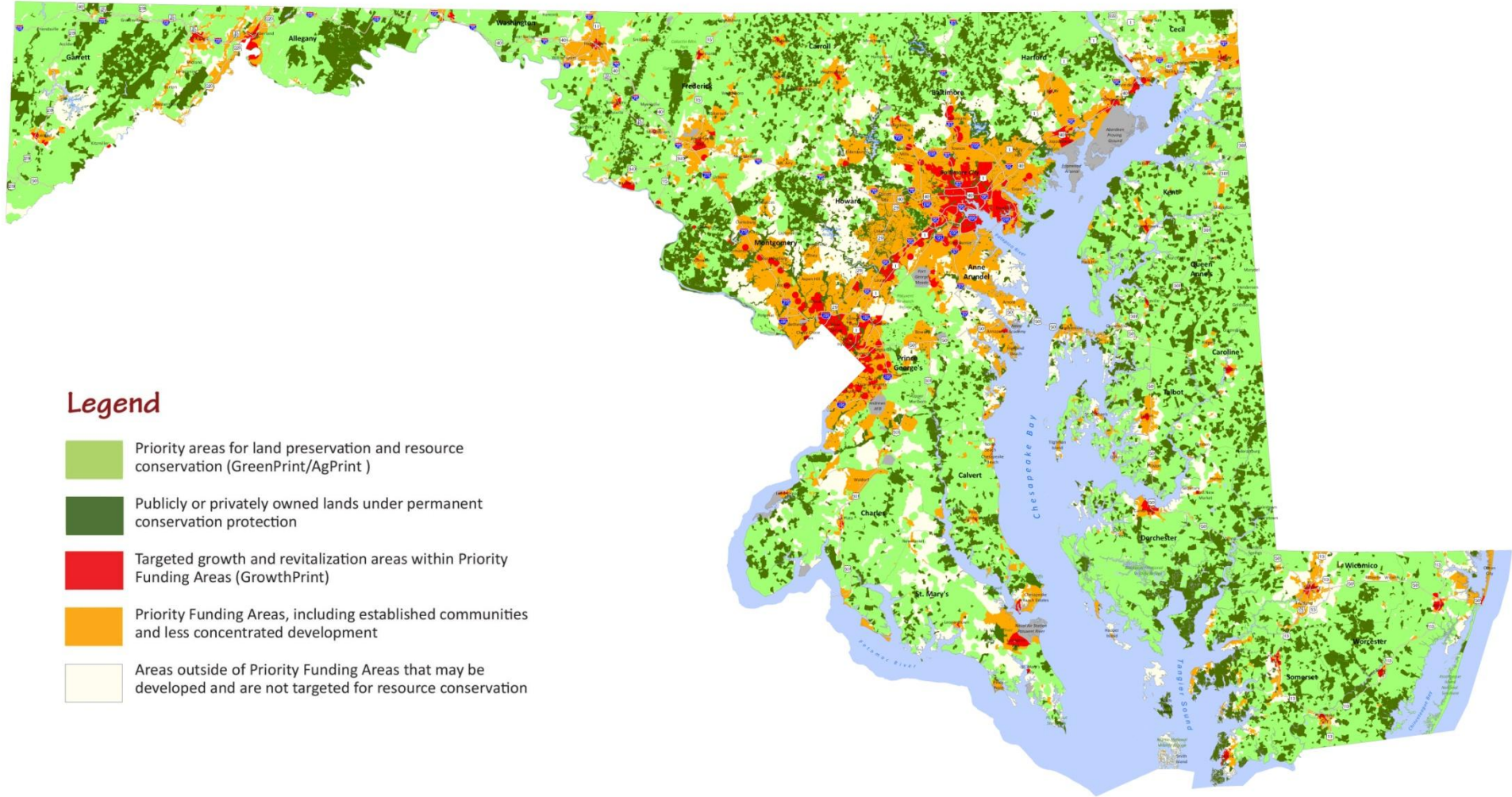




PlanMaryland Policy Map

Legend

-  Priority areas for land preservation and resource conservation (GreenPrint/AgPrint)
-  Publicly or privately owned lands under permanent conservation protection
-  Targeted growth and revitalization areas within Priority Funding Areas (GrowthPrint)
-  Priority Funding Areas, including established communities and less concentrated development
-  Areas outside of Priority Funding Areas that may be developed and are not targeted for resource conservation



PlanMaryland

What the Plan does

Designates areas for growth and preservation

Formulates objectives and criteria in designated areas

Ensures state and local involvement in place designation

Helps achieve smart growth goals



PlanMaryland Priority Areas

Initial State designations based on Prints

Local jurisdiction nominations

Final State designations



PlanMaryland

What State Agencies will do

Establish departmental implementation strategies

Develop interdepartmental functional strategies



PlanMaryland

Goal: Preservation

Objective: Identify and preserve critical natural resources

Policy: Maximize return on conservation investment in agricultural and related rural resource lands

Potential State Actions:

- Make administrative and statutory changes to maximize investment
- Use investment policy as a framework for collaboration with local governments

PlanMaryland

Goal: Growth

Objective: Accommodate Growth in Compact Communities

Policy: Better coordinate transportation and land use decision-making

Potential State Actions:

- Make strategic and targeted investments
- Identify and map transportation - land use assets
- Further elaborate investment tools and mechanisms to maximize efficient use of transportation infrastructure

PlanMaryland

Goal: Growth

Objective: Accommodate Growth in Compact Communities

Policy: Promote economic development and community design

Potential State Actions:

- Increased predictability, transparency and efficiency
- Reduced costs of development
- Regulatory flexibility

PlanMaryland

Goal: Sustainability

Objective: Ensure access to employment, affordable housing, education, healthy communities, and transportation

Policy: Develop incentives and requirements through state supported infrastructure and public facilities

Potential State Actions:

- Maximize water and sewer service within Priority Funding Areas
- Locate and design new public facilities to attract developers and their markets to growth centers

PlanMaryland

What local jurisdictions will do

Identify growth and preservation areas

Determine consistency of areas with State designated areas

Identify local implementing mechanisms for designated areas

PlanMaryland Implementation Strategy

State agency consistency with PlanMD goals

Target State capital and operating spending

Local areas evaluated for consistency

Public education and outreach

Technical assistance

Monitoring & evaluation



PlanMaryland

How will PlanMaryland be “adopted” and updated

Preparation of PlanMaryland already required by statute

Plan will be complete when accepted by the Secretary and Governor

Plan will be implemented by a combination of admin, regulatory and legislative actions

Plan will be updated as needed



PlanMaryland Monitoring & Evaluation

Establish key performance measures

Set targets/milestones within reasonable timeframes

Institute monitoring & evaluation based on those performance measures



Open House Dates

April 6	UMD College Park
April 13	Harford Community College
April 21	College of Southern Maryland
April 27	Frostburg State University
May 5	Salisbury University
May 11	Washington College
May 19	Columbia
May 25	Morgan State University

Questions/Discussion

Visit Plan.Maryland.gov



More than 500
followers on Facebook
at [www.facebook.com/
plan.maryland](http://www.facebook.com/plan.maryland)

Nearly 1000 followers
on Twitter at
[www.twitter.com/
SmartGrowthMD](http://www.twitter.com/SmartGrowthMD)

