

# PlanMaryland

A Statewide Plan for

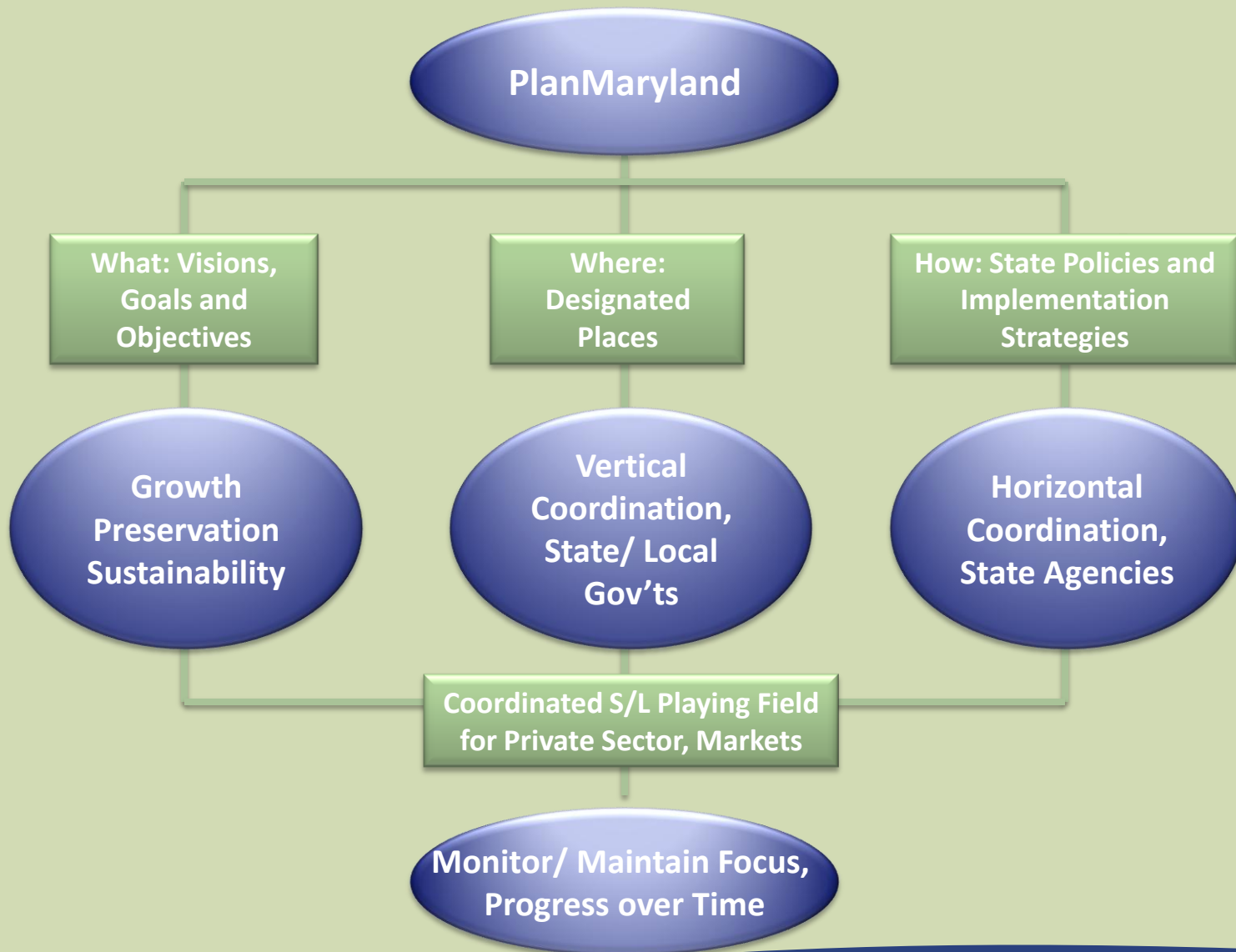
Smart and Sustainable Growth,  
Resource Conservation, &  
Quality of Life

Sustainable Growth Commission  
May 16, 2011



# PlanMaryland: Overview

- ❖ Chapter 1, Introduction, History and Stakeholder Input
- ❖ Chapter 2, Trends & Land Use Implications
- ❖ Chapter 3, Visions, Goals and Objectives
- ❖ Chapter 4, PlanMaryland Process
  - Policies to guide Plan Process
  - Initial State Place Designations
  - State Implementation Strategies
  - State/ Local Place Designations
- ❖ Chapter 5, Possible Actions
- ❖ Chapter 6, Oversight, Management and Metrics



## Relevant points about the Plan:

- It is a working, policy & process plan
  - Goals, policies as basis for implementation process
  - Initiates implementation process
  - Not static after 2011
- The Plan will be completed in stages as process occurs
  - Final 2011 Plan in October
  - Initial State Designated Places (2011), State Implementation Strategies (2011 & 2012), State/Local Designated Places (2012 & after)
  - Stages subject to ongoing stakeholder review

# Suggested Focus for Review:

- ❖ Adequacy as a policy & process plan
  - Direction it provides for implementation by collaborators: goals, objectives, policies
  - Sufficiency of implementation mechanisms, incentives to achieve desired outcomes
  - Process to maintain focus and consistency over time
- ❖ Initial State Place Designations
- ❖ Implementation timing & sequence
- ❖ Additions/ revisions to Plan elements
- ❖ Revisions of Draft content, clarity & communication

# Desired Plan Outcomes

- 12 Visions of 2009
- 35 Objectives under 3 Goals
  - Growth
  - Land and Resource Conservation
  - Sustainable Quality of Life



Visions, Goals, Objectives serve three purposes:

1. Foundation for all other elements of the Plan
2. Intended to complement goals of collaborators: agencies, local governments, the private sector and markets; not to reiterate or substitute for those goals
3. Common targets of the collaboration



## Relevant points about desired outcomes:

- They are no one's and everyone's goals
- Essential players are state government, local government, private sector, markets, the public
- Key is horizontal and vertical collaboration among the players

## Challenges/ Keys to Success

- ❖ Desirable, compact, sustainable communities attract and accommodate the vast majority of residential and business development and provide sustainable quality of life.
- ❖ Critical agricultural, water, natural and living resources necessary to sustain resource-based businesses and employment and support high quality of life are identified and protected.
- ❖ The spread of dispersed low density residential development and the associated costs to the public and the environment are minimized.
- ❖ Outcomes result from a coordinated state, local and private sector effort and the responses of markets to that effort.



# PlanMaryland Policies

Intended to:

- Guide strategy development and implementation
- Bridge between Visions/Goals/Objectives and Plan Processes
  - ◆ State Implementation Strategies
  - ◆ State/ Local Place Designation
- Agricultural/Rural Lands; Transportation/ Land Use; Public Facilities; Water & Natural Resources; Climate Change Impacts; Economic Development & Community Design; Social Equity, Safety, Education; Sustainability; Capital Budgeting; Community Open Spaces



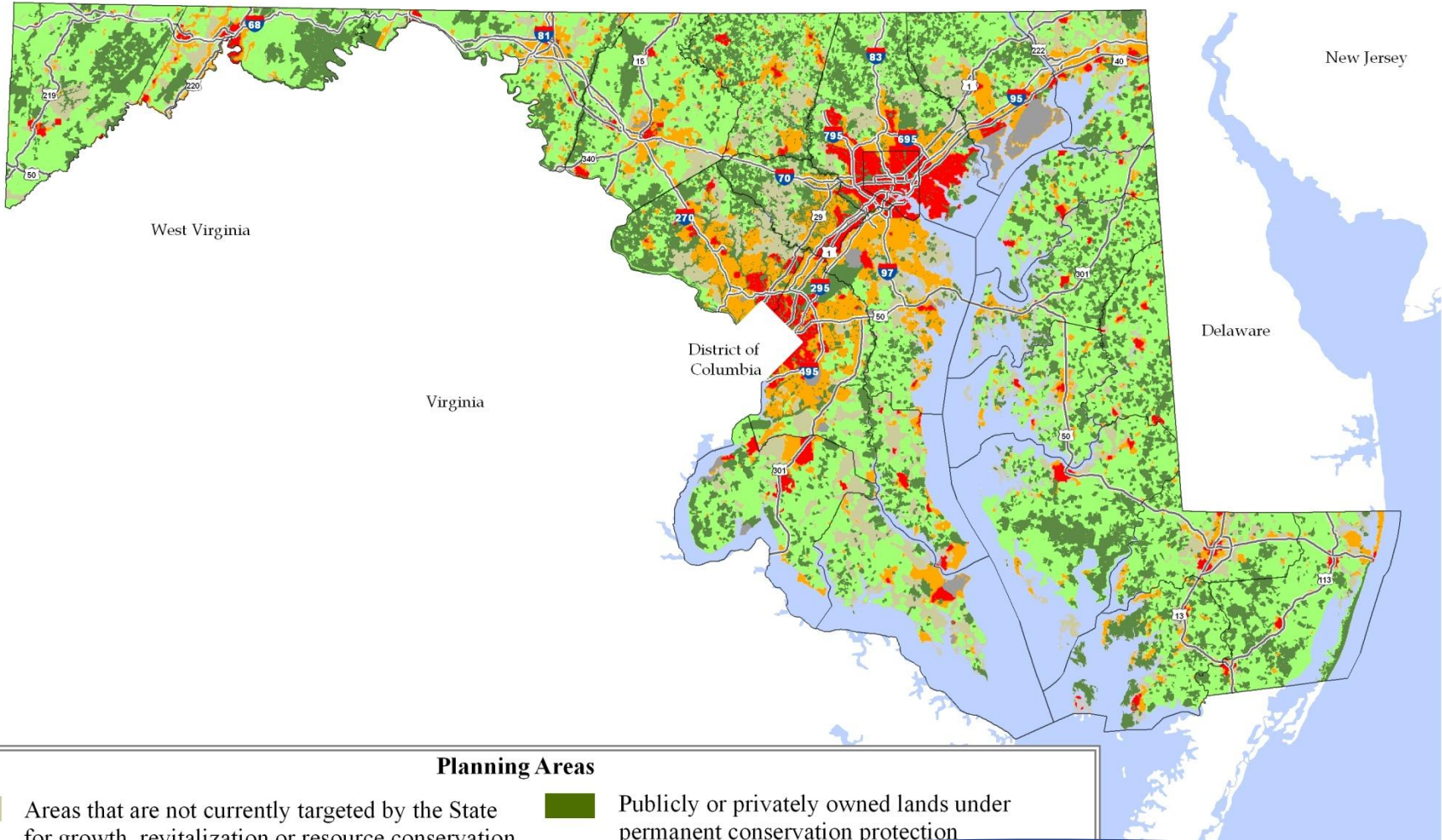
# Initial State Place Designations

- ❖ The State's starting point about where it is important to accomplish what
  - Geographic boundaries and places
  - Place-specific public outcomes and objectives
  - Initial geographic framework for state implementation strategies & local consideration
- ❖ Intended as a start, not as a final
- ❖ GrowthPrint & Priority Resource Areas
  - Agricultural, Water, Natural and Historic Cultural Resources
  - Lands Subject to Effects of Climate Change

# GrowthPrint, GreenPrint & AgPrint



Maryland Department of Planning



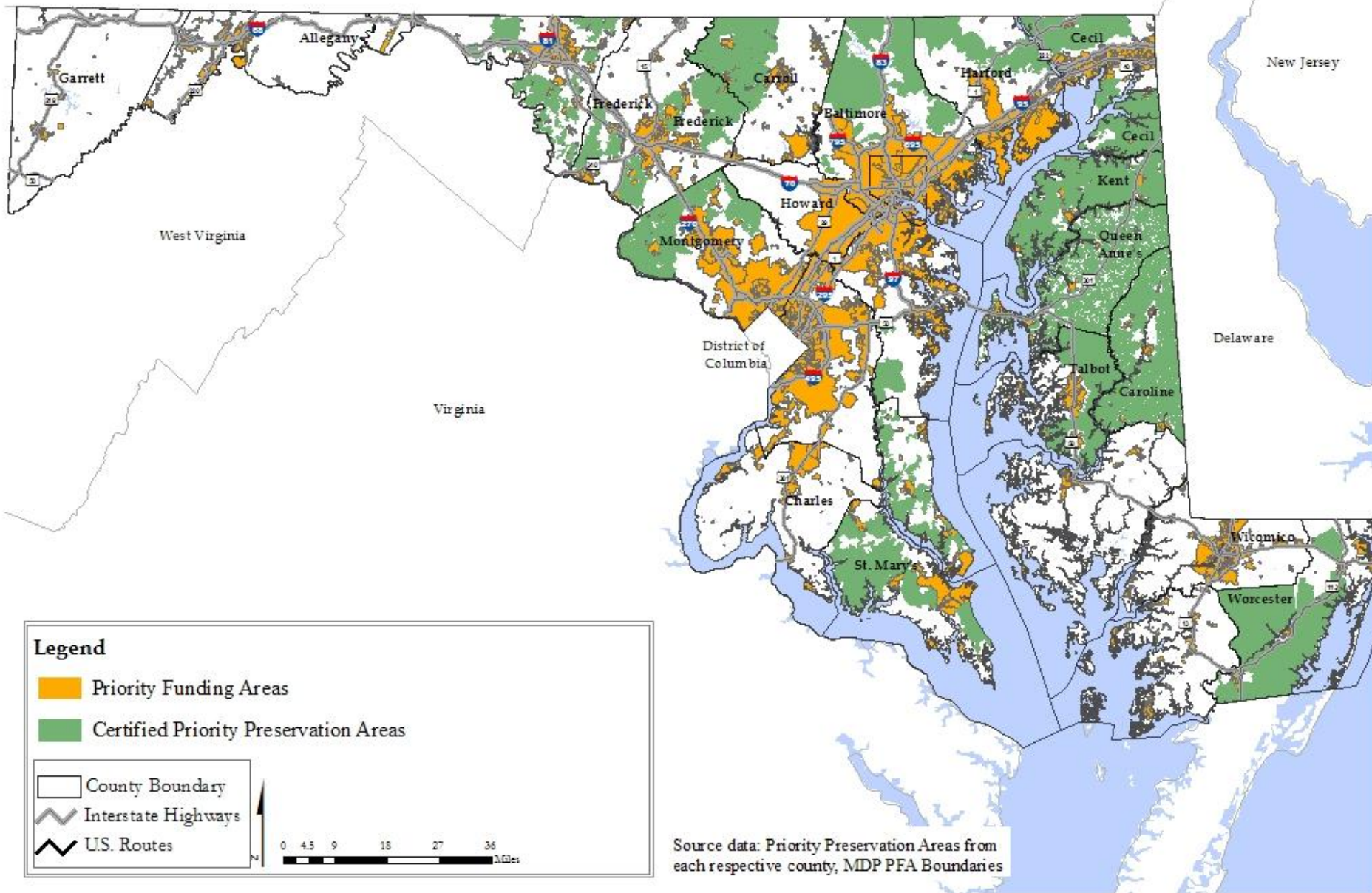
## Planning Areas

- Areas that are not currently targeted by the State for growth, revitalization or resource conservation
- Publicly or privately owned lands under permanent conservation protection
- Priority areas for land preservation

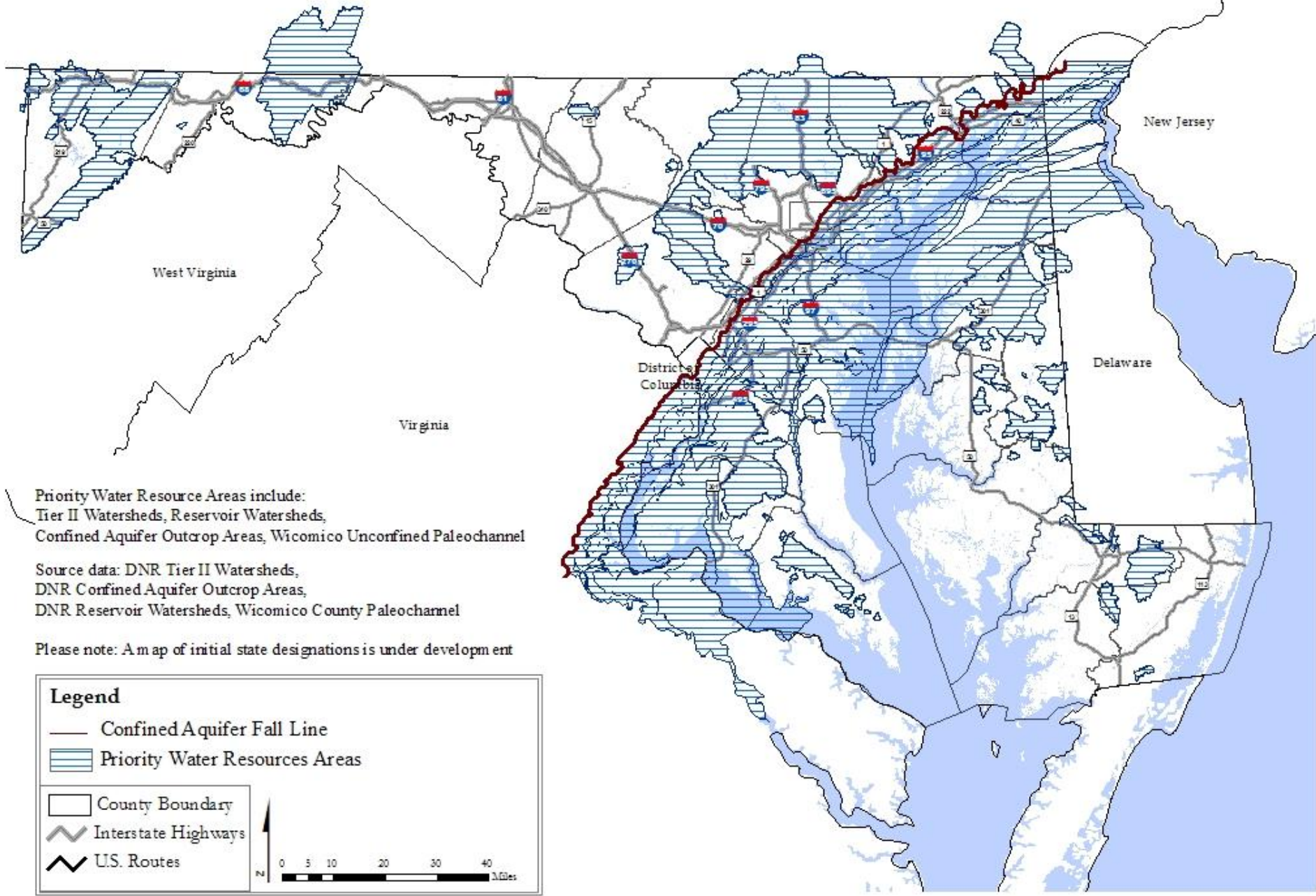




Map 3, Priority Agricultural Land Preservation Areas



# Map 4, Preliminary Priority Water Resource Areas



Priority Water Resource Areas include:  
Tier II Watersheds, Reservoir Watersheds,  
Confined Aquifer Outcrop Areas, Wicomico Unconfined Paleochannel

Source data: DNR Tier II Watersheds,  
DNR Confined Aquifer Outcrop Areas,  
DNR Reservoir Watersheds, Wicomico County Paleochannel

Please note: A map of initial state designations is under development

**Legend**

- Confined Aquifer Fall Line
- ▨ Priority Water Resources Areas
- ▭ County Boundary
- ⚡ Interstate Highways
- ⚡ U.S. Routes

0 5 10 20 30 40 Miles



# State Implementation Strategies

## ❖ Purpose:

- ◆ Maximize state mechanisms to support goals/ objectives in designated places – capital, regulatory, assistance etc.
- ◆ State agencies on same page – horizontal integration
- ◆ Integrate agency goals/obligations with Plan outcomes
- ◆ Let local and private partners understand what we're doing – support vertical integration

## ❖ Anticipated Timing:

- ◆ 2011 – highest priority state mechanisms
- ◆ 2012 – a more comprehensive set of strategies, all major mechanisms



# State/ Local Designated Places

- ❖ Purpose: Maximize congruence/ compatibility between state & local government
  - Geographies
  - Purpose – desired public outcomes
  - Mechanisms – capital and noncapital
- ❖ Place based objectives – bridge between geographies and Goals/ Objectives/ Policies
- ❖ Criteria – designed to
  - Optimize vertical integration: state & local purpose, mechanisms
  - Not be one size fits all
- ❖ Process
  - Preliminary local nominations and state feedback – initial coordination
  - Official nominations and designations
  - State & Local commitments & priorities

# PlanMaryland Oversight and Consistency Process

- Auspices of Smart Growth Subcabinet & Coordinating Committee
- Oversee
  - Initial State Place Designations
  - State Implementation Strategy development
  - State/ Local Designation Process
  - Accountability for state/ local commitments
- Facilitate horizontal & vertical integration – between agencies and state/ local government
- Resolve inconsistencies/ conflicts
- Provide continuity across elections/ administrations
- Ongoing review by Sustainable Growth Commission to advise MDP, Smart Growth Subcabinet, Governor and Legislature



## Recap: PlanMaryland Strategy/ Benefits

- Take advantage of existing programs and relationships
- Recognize over-arching importance of collaboration
- Provide partners with context for factors beyond their individual control
  - Land use, socio-economic, development, global & environmental
  - Realities of the relationships between collaborators
- Designed to create opportunities of synergy among collaborators to
  - Use their individual authorities & influences to
  - Advance their own goals in sync with the goals the Plan

# Next Steps

- ❖ PlanMaryland Open Houses
- ❖ 120 Day Review and Comment on Draft Plan
  - Smart Growth Commission
  - State Agencies
  - Public & Other Stakeholders
  - Local Government
  - Legislature
- ❖ Revise/ Refine Draft Plan, October Completion
- ❖ Begin Implementation Strategy Development



## Open House Dates

<b>May 5</b>	<b>Salisbury University</b>
<b>May 11</b>	<b>Washington College</b>
<b>May 19</b>	<b>Columbia</b>
<b>May 25</b>	<b>Morgan State University</b>
<b>June 2</b>	<b>Frostburg State University</b>
<b>June 8</b>	<b>Harford Community College</b>
<b>June 16</b>	<b>University of Maryland College Park</b>
<b>June 23</b>	<b>College of Southern Maryland</b>



# Visit [Plan.Maryland.gov](http://Plan.Maryland.gov)



More than 500 followers on Facebook at [www.facebook.com/plan.maryland](http://www.facebook.com/plan.maryland)

Nearly 1000 followers on Twitter at [www.twitter.com/SmartGrowthMD](http://www.twitter.com/SmartGrowthMD)





# Questions/Discussion