

A BETTER MARYLAND

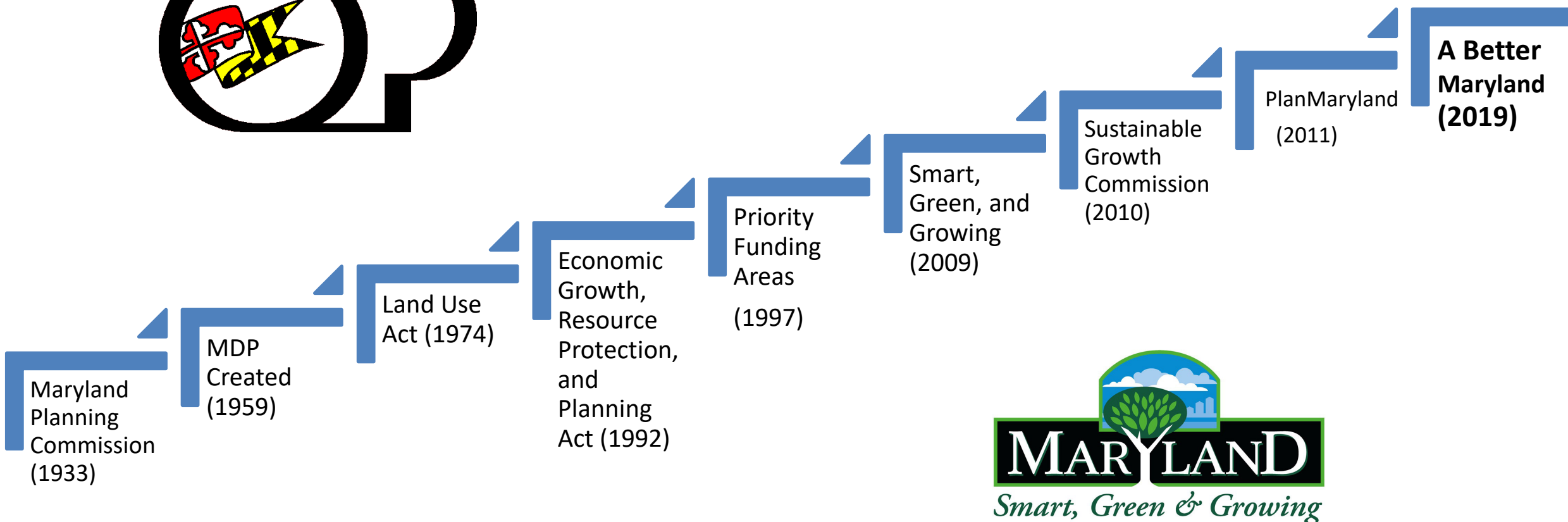
THE STATE DEVELOPMENT PLAN

SUSTAINABLE GROWTH COMMISSION
EASTON

SEPTEMBER 23, 2019



STATE PLANNING IN MARYLAND TIMELINE



A BETTER MARYLAND

- Goals:
 - Enrich the lives of Marylanders
 - Use smart growth principles
 - Grow responsibly
 - Protect Maryland's resources



EXECUTIVE ORDER
01.01.2017.18
State Development Plan



A BETTER MARYLAND VISION STATEMENT

A Better Maryland is a dynamic, evolving plan that provides a framework to support a thriving economy and environmental stewardship. The plan supports collaboration among state and local governments and all other stakeholders, providing resources and tools for the long term economic success of Maryland



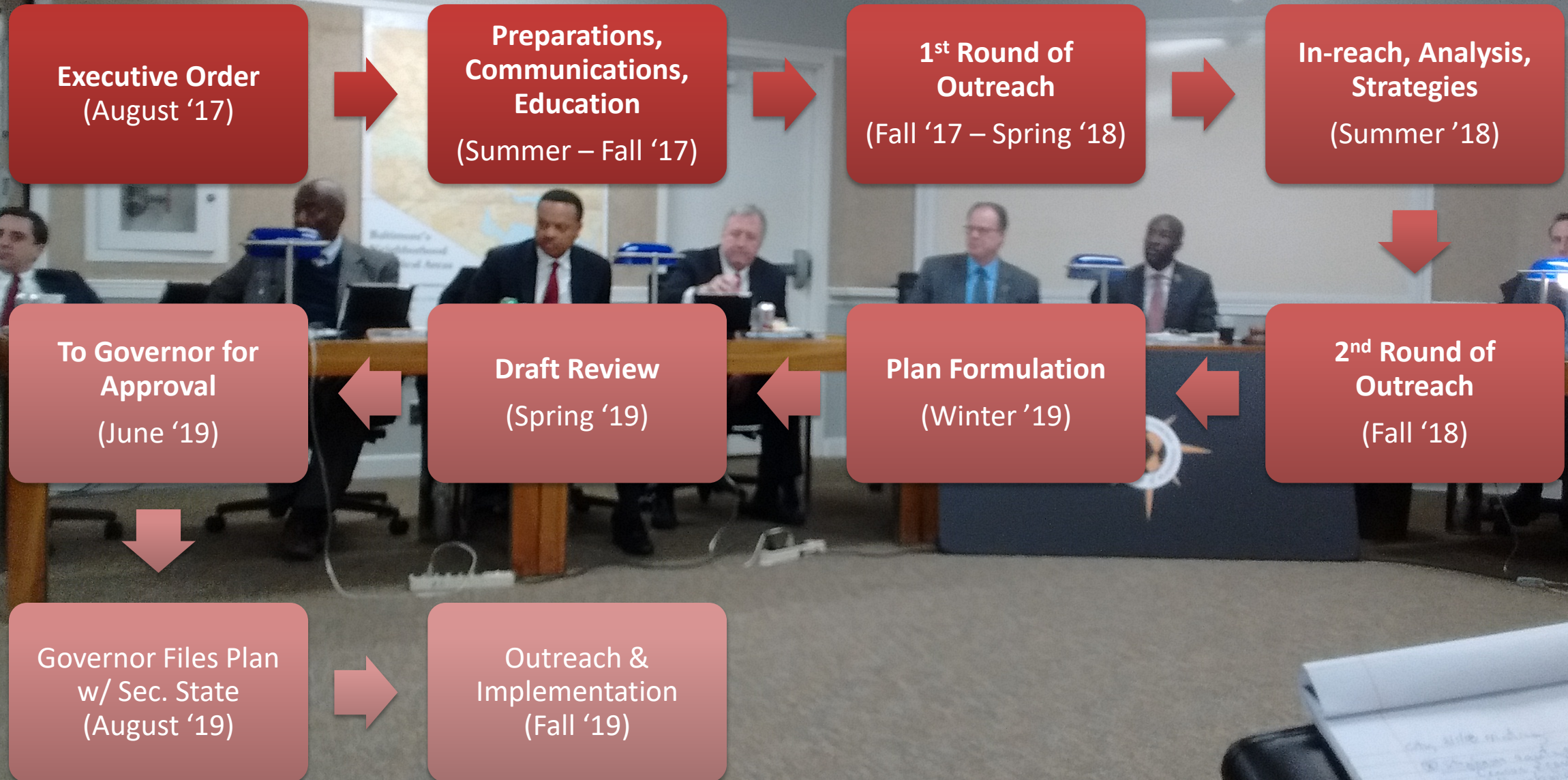
A BETTER MARYLAND

- The plan will not: **§5-606**
 - be used to deny a State-issued permit or State funding.
 - supersede local planning and zoning.
 - supersede any local ordinance or regulations.
 - prevent local funding of a project.
 - require a local government to change or alter a local ordinance, regulation, or comprehensive plan.

Not impose a set policy on local governments, but rather provide information, alternatives, and best practices for locals to consider and pursue - or not.



PROCESS





LISTENING SESSIONS

Meetings in every County and Baltimore City; all jurisdictional notes posted on [website](#)



THEMES

One Size Does Not Fit All

Accessibility of Housing

Place-based Economic Development

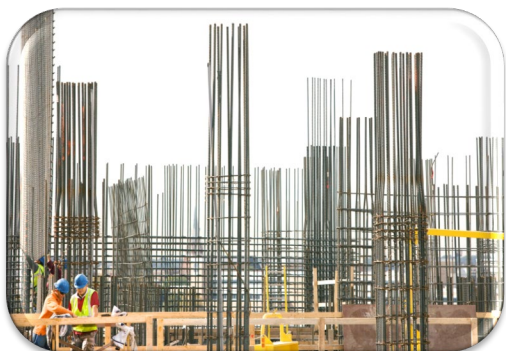
State Agency Coordination

People-based Resources

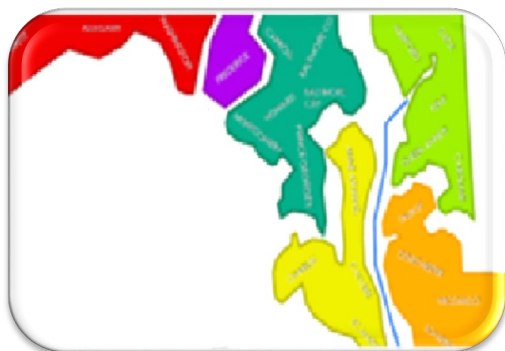
Preparing for the Future



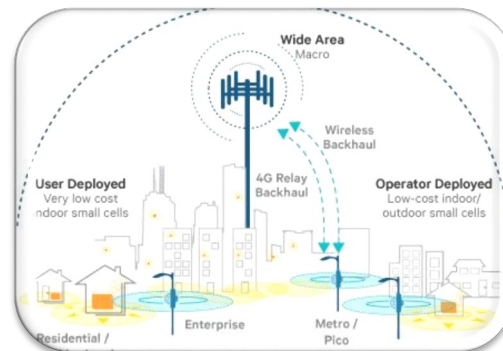
OBJECTIVES



Improve the Delivery of Programs and Services to Local Jurisdictions



Respect Regional Distinctions



Build Capacity in Communities



Improve Collaboration and Coordination Among State Agencies



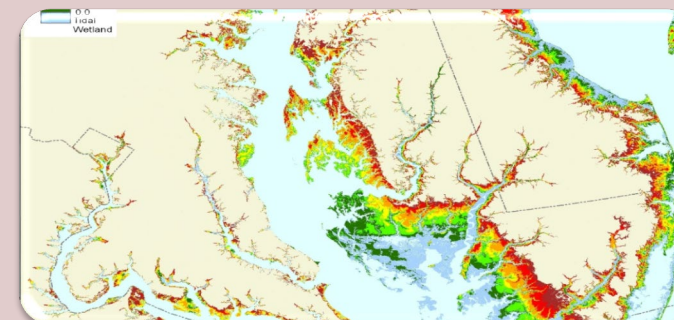
TOPICS



**Sustaining
Environment into the
Future**



Preserving Land



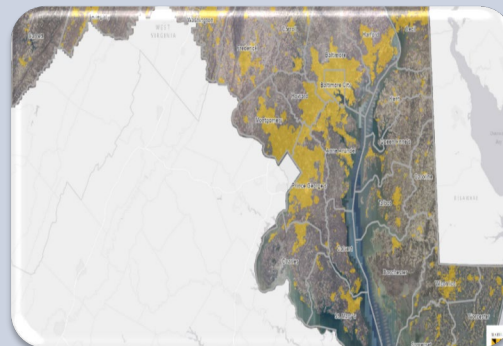
**Adapting and
Becoming Resilient
to Climate Change**



TOPICS



**Tackling the
Economic
Development
Needs of the
Next Century**



**Improving
Economic
Growth and
Development
in Existing
Communities**



**Meeting
Renewable
Energy Goals**



**Addressing
Maryland's
Transportation,
Infrastructure, and
Technology
Challenges and
Opportunities**



TOPICS



Creating Workforce/
Affordable Housing



Protecting Historic
and Cultural
Resources



Creating Quality
Places

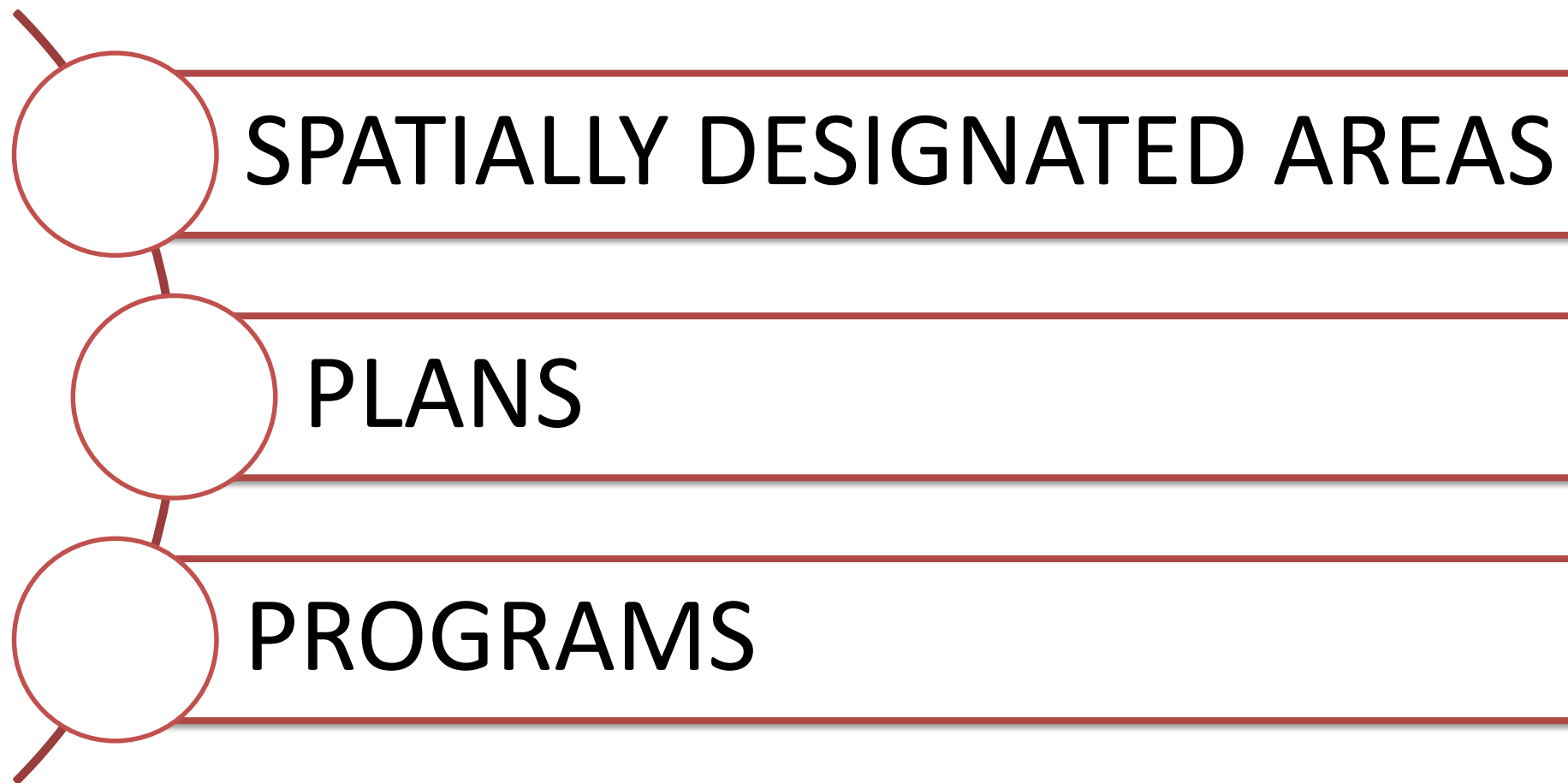


AREAS OF CRITICAL STATE CONCERN

- §5-611 of the State Finance & Procurement Article states,
 - “The Plan shall identify all areas designated by the Department as areas of critical State concern.
- §3-102 (a)(1)(ii) of the Land Use Article, states
 - “The planning commission for a local jurisdiction shall include in the comprehensive plan the following elements: an area of critical State concern element;”



AREAS OF CRITICAL STATE CONCERN

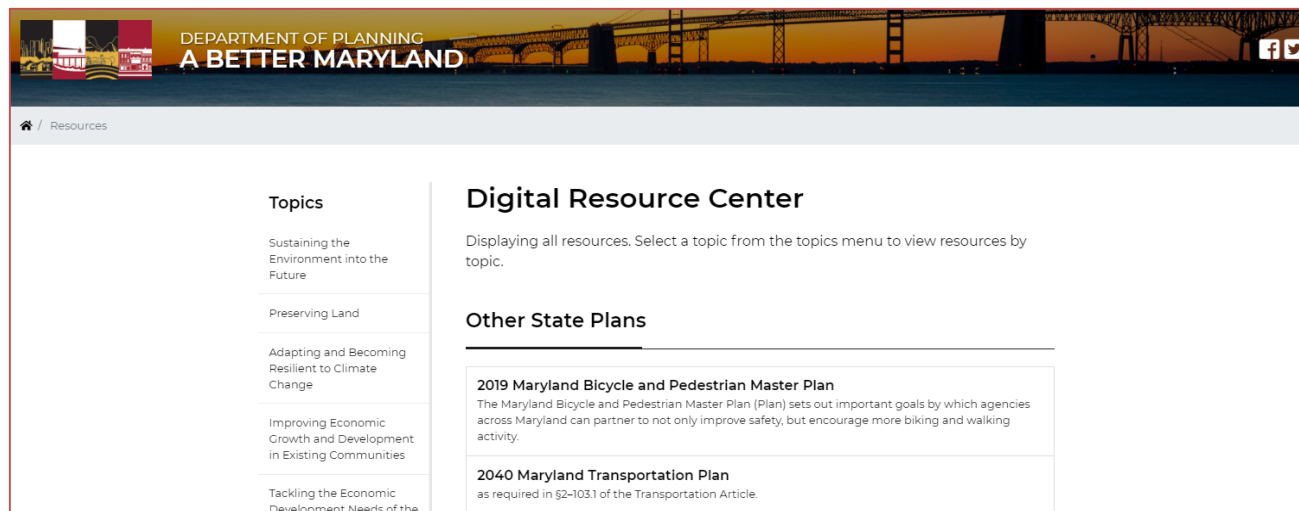


AREAS OF CRITICAL STATE CONCERN

- These areas may be considered by local jurisdictions in their local planning processes
- The Smart Growth Subcabinet has endorsed this list and will update it periodically
- Local governments may propose additional areas for inclusion



DIGITAL RESOURCE CENTER



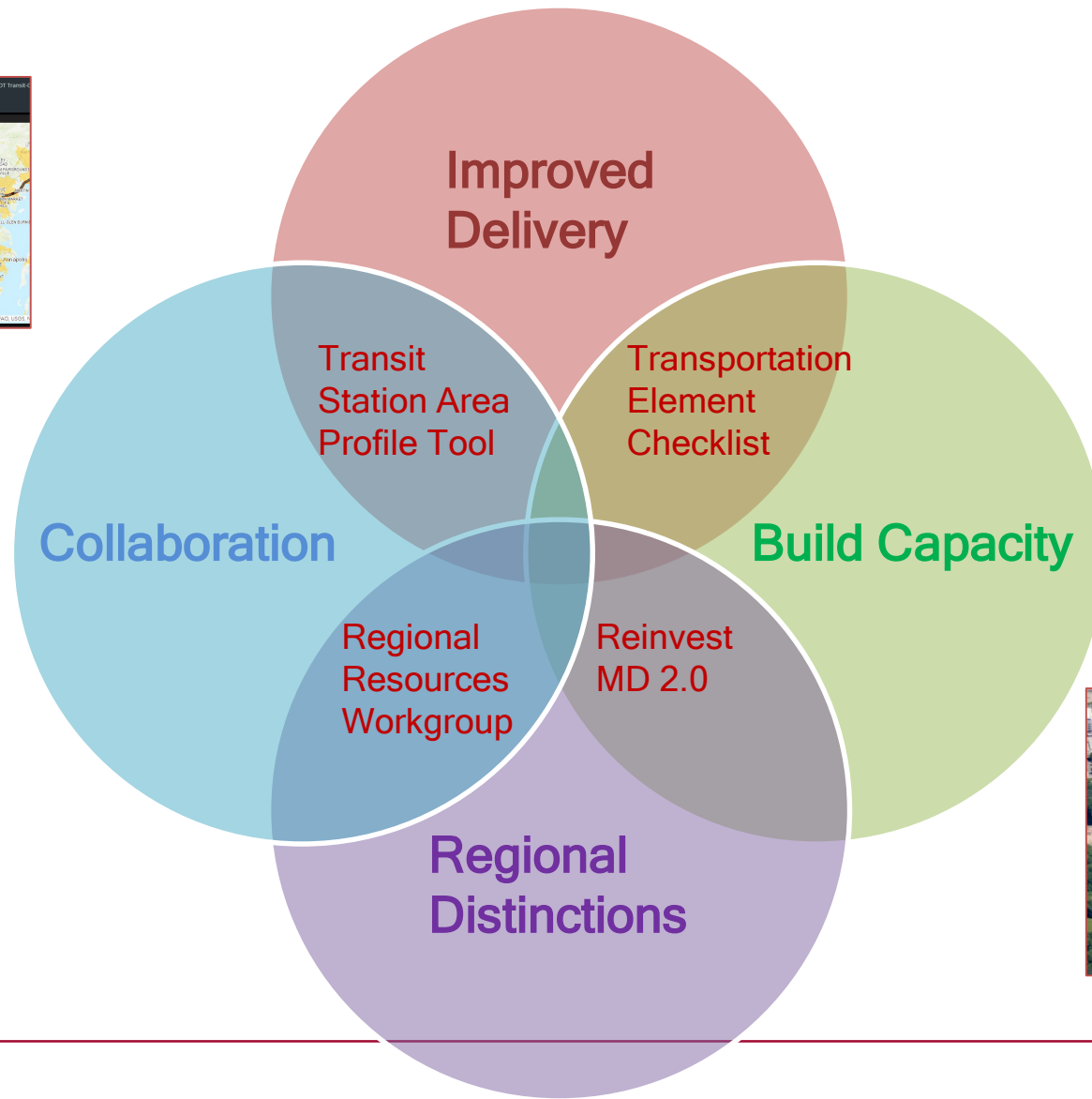
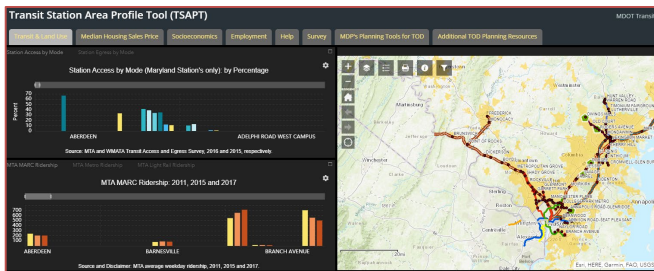
Data resources (e.g., geographic information systems (GIS) and databases) maintained by state agencies and local governments using

- Maryland's Open Data Portal
- Maryland iMap infrastructure

Virtual library of state and local plans and related planning resources



ACTIONS ADDRESSING MULTIPLE OBJECTIVES



**Comprehensive Planning in Maryland:
Transportation Element Checklist**

*About this Checklist: This outline is organized in a standard, traditional manner, but is not intended to dictate the structure or item order that jurisdictions should follow when compiling their own transportation elements. Maryland Code Annotated, Land Use, §3-102 requires a local jurisdiction to include "a transportation element" in the comprehensive plan; and Land Use §3-105 outlines broad requirements for what a transportation element should include. Nevertheless, the Land Use Article does not provide details on how and with what the element may consider those broad requirements. This document is **NOT** a checklist of to do items that must be included, but is rather intended as a guide for what jurisdictions may consider when completing a transportation element. Finally, many of the data sources/sets described and linked below are not available at the municipal or sub-county level. For these data, and as a general best planning practice, municipalities should collaborate with their counties and Metropolitan Planning Organizations (MPOs). State staff members at the [Maryland Department of Planning \(Planning\)](#) and the [State Highway Administration \(SHA\)](#) are also available to assist.*

I. Introduction: The introduction to the transportation element should summarize the community's vision and/or mission for its transportation network, along with community input it received regarding transportation during the stakeholder engagement portion of the comprehensive planning process. The vision should represent, and describe in generalized terms, a desired condition or endpoint for the jurisdiction's transportation network and its impact on the larger community. A mission explains, again in generalized terms, how the jurisdictions will work toward its vision. Both the vision and the mission are most convincing when connected and responsive to stakeholder input.

Need assistance in your region? Contact the Regional Resources Team

Regional Resources Teams, comprised of the 10 State Agencies of the Governor's Commerce Subcommittee, stand ready to assist with your needs. Divided into five regions, the Teams meet bi-monthly to keep apprised of projects, developments and initiatives and identify collaborations to assist businesses and local jurisdictions with economic development efforts. Through outstanding customer service, the Teams strive to make your experience with State government faster and easier. Click on the map below to find your Regional Resources Team.

Click or select your region.



ABetter.Maryland.gov

