

Technical
Assistance
and
Resources



Maryland

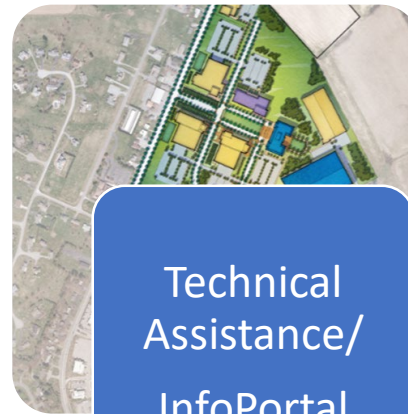
DEPARTMENT OF PLANNING

- Regional Planning Program
- State Data Center
- Census
- Technical Assistance and State Designations

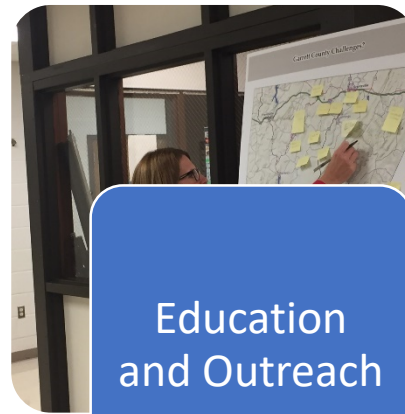
Local Assistance and Training



Plan Reviews



Technical Assistance/
InfoPortal



Education
and Outreach

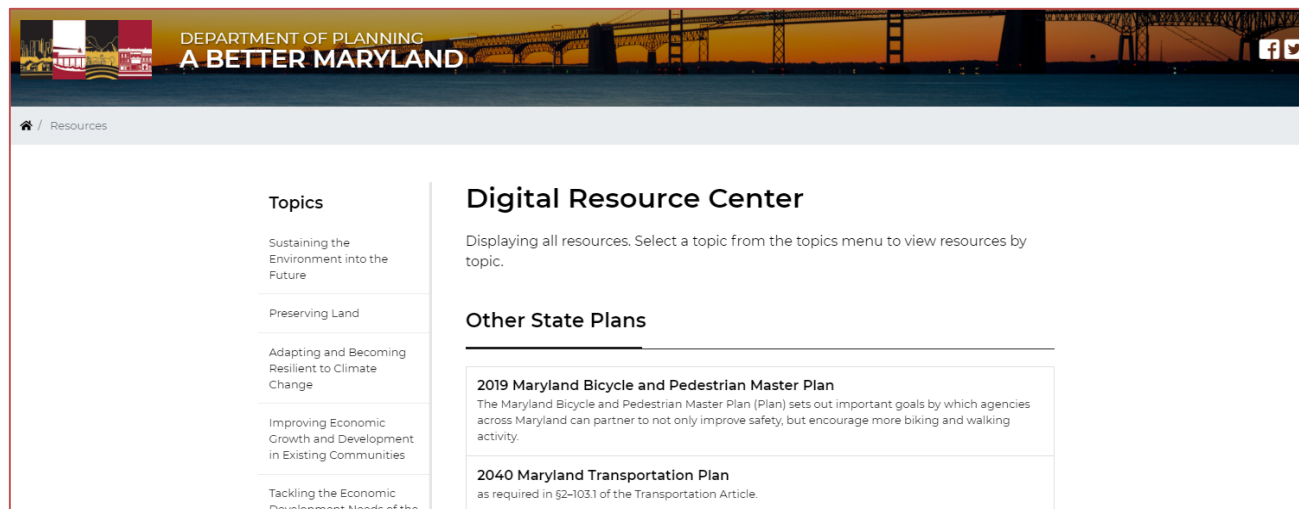


Interagency/
Jurisdictional
Coordination

State Data Center



DIGITAL RESOURCE CENTER



Data resources (e.g., geographic information systems (GIS) and databases) maintained by state agencies and local governments using

- Maryland's Open Data Portal
- Maryland iMap infrastructure

Virtual library of state and local plans and related planning resources



Reinvest Maryland



The graphic is a vertical collage. At the top left is a photo of people dining outdoors. To its right is a dark blue box with a white icon of city buildings and the word "Urban". Below the dining photo is an orange box with a white icon of houses and the word "Suburban". To the right of the orange box is a photo of a residential street. Below the orange box is a photo of a rural road with mountains. To its right is a teal box with a white icon of a house and the word "Rural". At the bottom is a dark red box with the text "Reinvest Maryland 2.0" and "A Toolkit for Assisting Maryland's Counties, Towns, and Communities to Accelerate Infill, Redevelopment and Revitalization". The bottom of the graphic features a yellow and black diagonal striped pattern.

Urban

Suburban

Rural

Reinvest Maryland 2.0
A Toolkit for Assisting Maryland's Counties, Towns, and Communities to Accelerate Infill, Redevelopment and Revitalization



The screenshot shows the website header with the Maryland state logo and ".gov" domain. The main title is "REINVEST MARYLAND". A navigation bar includes "What is Reinvest Maryland?", "Case Studies", "Technical Assistance", and "Toolbox". The "Toolbox" page title is "Reinvest Maryland Toolbox". Below the title is a paragraph: "More than 100 federal and state programs support infill, redevelopment and community revitalization in Maryland. MDP developed this toolbox to point you to the right programs." Underneath is a "Search options:" section with three numbered steps: 1. Pick among seven categories, such as "downtown improvements"; 2. Further refine your search by selecting assistance types, such as "loan or grant"; 3. You can also search by keyword. At the bottom is a table with two columns: "Categories" and "Assistance Types", each containing a list of items with checkboxes.

MARYLAND .gov

REINVEST MARYLAND

What is Reinvest Maryland? Case Studies Technical Assistance **Toolbox**

Reinvest Maryland Toolbox

More than 100 federal and state programs support infill, redevelopment and community revitalization in Maryland. MDP developed this toolbox to point you to the right programs.

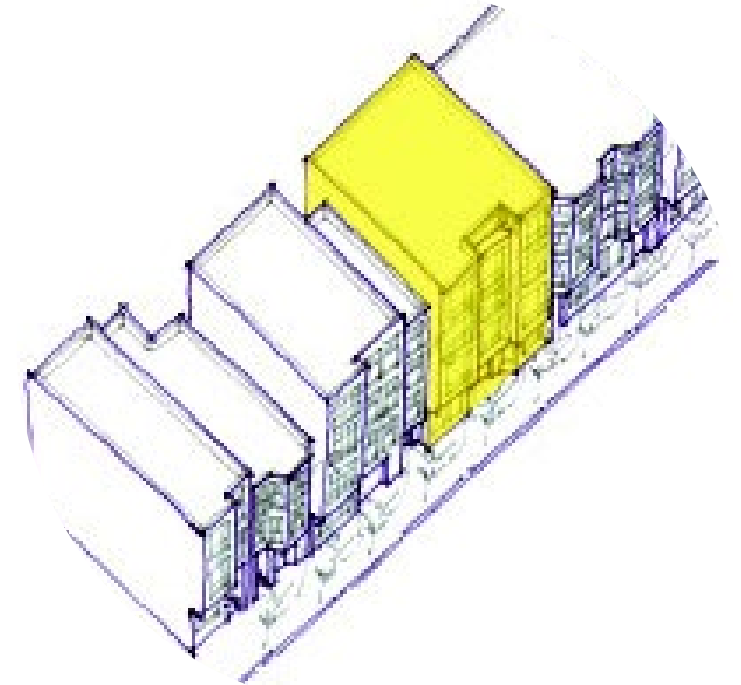
Search options:

1. Pick among seven categories, such as "downtown improvements"
2. Further refine your search by selecting assistance types, such as "loan or grant"
3. You can also search by keyword

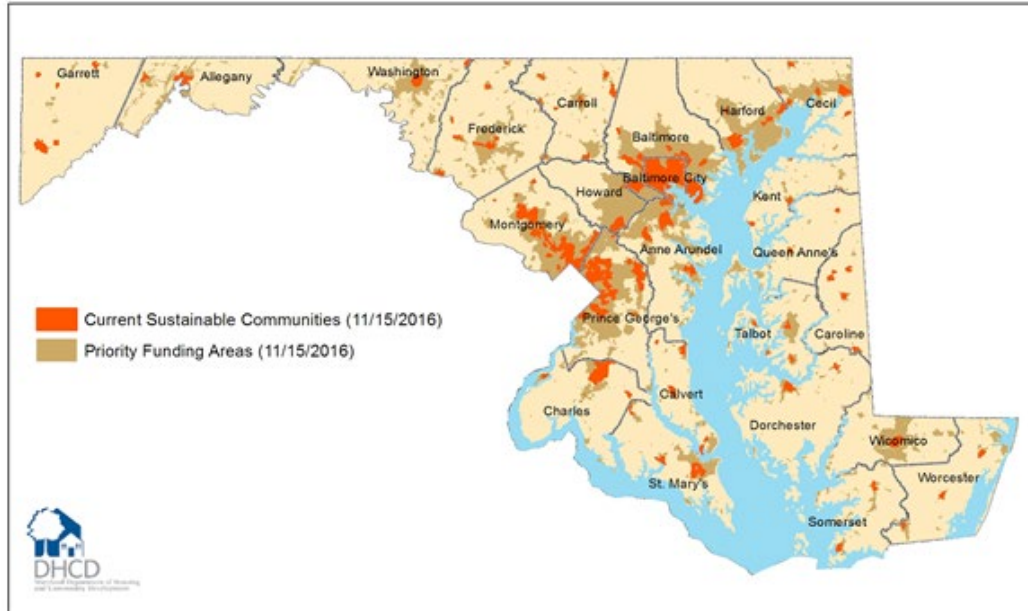
Categories	Assistance Types
<input type="checkbox"/> Plans/Policies/Regulations	<input type="checkbox"/> Fee Reduction
<input type="checkbox"/> Downtown Improvements	<input type="checkbox"/> Loan or Grant
<input type="checkbox"/> Public Amenities & Infrastructure	<input type="checkbox"/> Other Financing Assistance
<input type="checkbox"/> Residential Programs	<input type="checkbox"/> Tax Incentive
<input type="checkbox"/> Economic Development	<input type="checkbox"/> Regulatory Relief
<input type="checkbox"/> Historic Preservation	<input type="checkbox"/> Technical Assistance
<input type="checkbox"/> Environmental Protection	<input type="checkbox"/> Advocacy

Fulfill the Vision: Overcoming Barriers to Infill and Adaptive Reuse

MDP-Local Assistance and Training Division
Victoria Olivier



SUSTAINABLE COMMUNITIES in MARYLAND



Enterprise Zones





Maryland Opportunity Zones





COALITION FOR
COMMUNITY
**SOLAR
ACCESS**

**Maryland Planning Commissioners
Association Conference**

Laurel Passera, Policy Director



WHO ARE WE



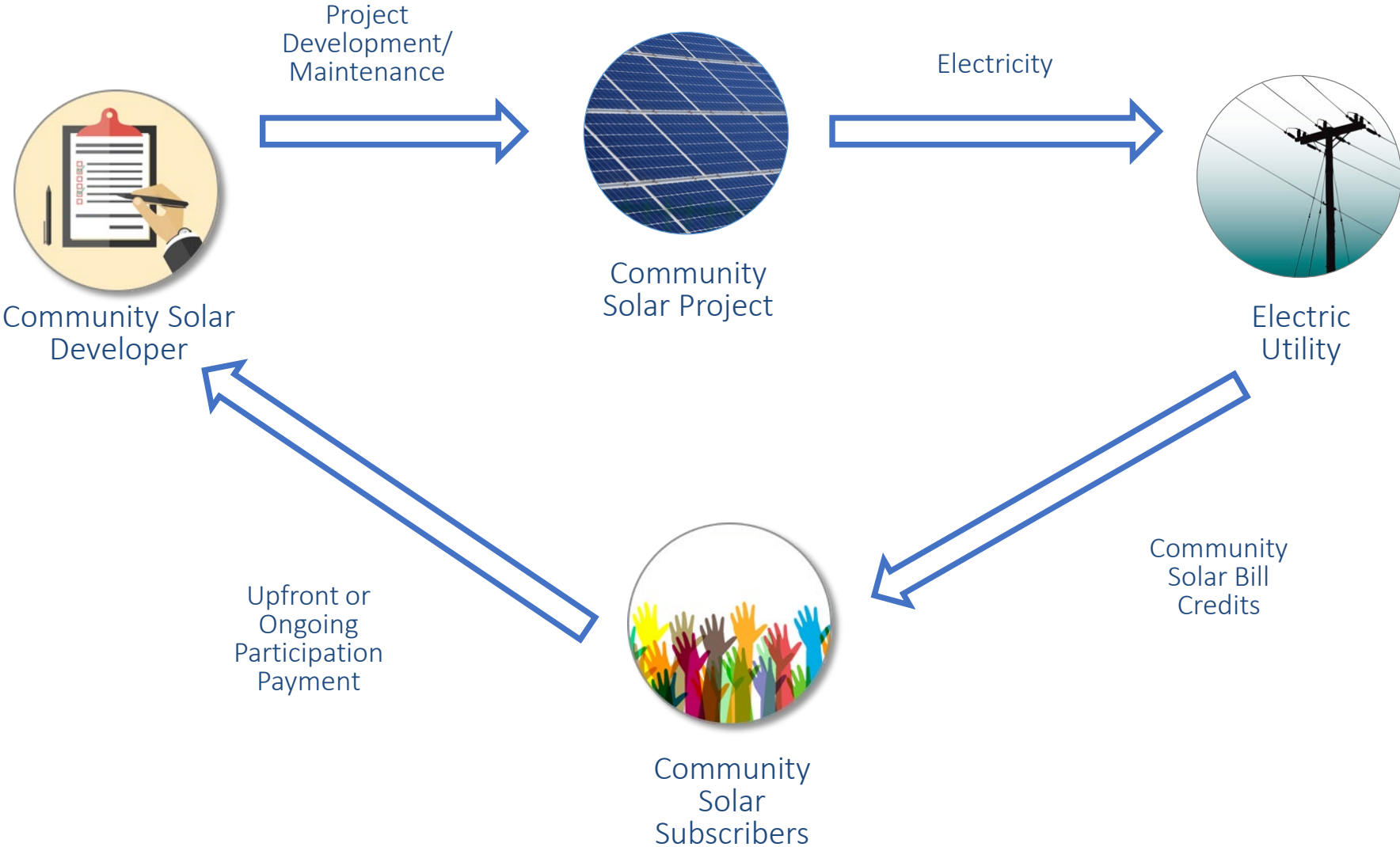
The Coalition for Community Solar Access is a national Coalition of businesses and non-profits working to expand customer choice and access to solar for all American households and businesses through community solar.



Our Mission

Empower every American energy consumer with the option to choose local, clean, and affordable community solar. We work with customers, utilities, local stakeholders, and policymakers to develop and implement policies and best practices that ensure community solar programs provide a win, win for all, starting with the customer.

HOW COMMUNITY SOLAR WORKS



WHY COMMUNITY SOLAR?



IT'S EASY AND FLEXIBLE: Customers choose how much they want, and when they want it

- Community solar allows individuals to choose how much solar energy they receive.
- It provides individuals the ability to make the decision to access solar energy, even if their utility isn't supportive.


PROVIDES ACCESS TO CLEAN ENERGY ALL CUSTOMERS

- Onsite solar isn't an option for a lot of people or businesses. Community solar expands that ability to choose solar to anyone or organization with an electric bill.
- Underserved communities often bare the brunt of the least reliable and highest polluting parts of the electricity system. Community solar enables these communities to make the choice to go solar themselves.

BENEFITS THE GRID AND THE ENVIRONMENT

- Centrally planned, economies of scale over onsite, and distribution benefits of DERs = good for customers and utilities
- Zero fuel cost and zero emissions

PROVIDES LOCAL ECONOMIC BENEFITS

- Individual subscribers save money on their electricity bills.
 - Projects spur private investment in the local economy.
 - Projects generate ongoing tax revenue.
- 

Maryland CSEGS Pilot Program at a Glance



- Initially a 3-year pilot program, extended through legislation in 2019 to add an additional 4 years, **until 2024**
- Projects may be up to **2 MW** in size; first 3 years will allocate up to **~196 MW**. Additional capacity, TBD.
- At least 2 participants per project; participants taking 200 kW may not make up more than 60% of a project's subscriptions
- **3 categories** of projects: Open, Small/Brownfield/Other and Low-to-Moderate Income
- Subscribers receive **full retail rate** for their share of the project's generation



COALITION FOR
COMMUNITY
**SOLAR
ACCESS**

THANK YOU!

LAURELP@COMMUNITYSOLARACCESS.ORG
