



Leonardtwn

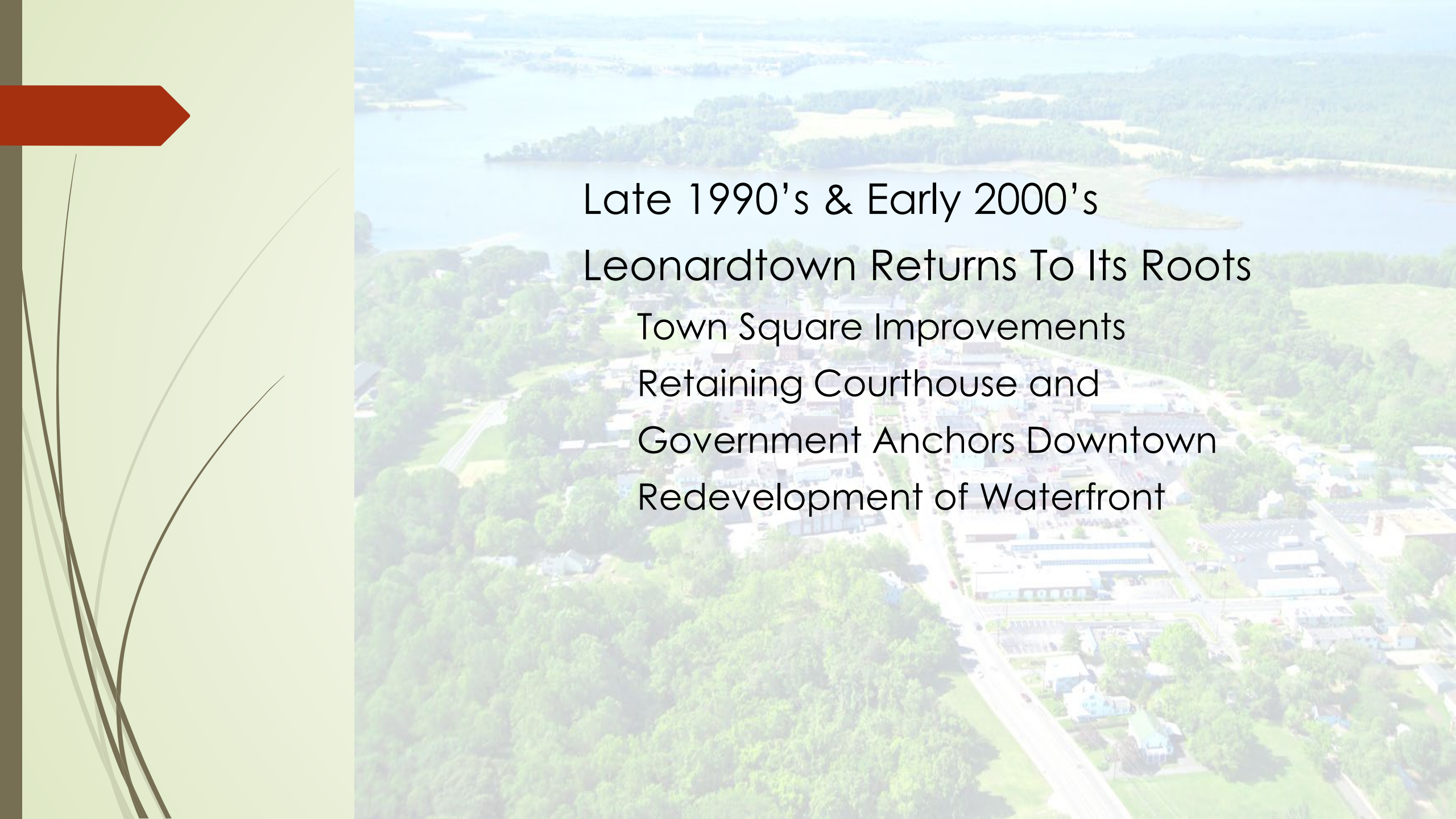
A Most Exceptional Place (Today)

A Two Plus Decade Journey of a Non Planner to Bring Back a Small Town

Laschelle McKay, Town Administrator

Laschelle.mckay@leonardtwnmd.gov

301-475-9791

An aerial photograph of Leonardtown, Maryland, showing the town square, waterfront, and surrounding landscape. The town square is the central focus, with the courthouse and government buildings. The waterfront is visible on the right side, and the surrounding landscape is lush green. The text is overlaid on the image.

Late 1990's & Early 2000's
Leonardtown Returns To Its Roots
Town Square Improvements
Retaining Courthouse and
Government Anchors Downtown
Redevelopment of Waterfront

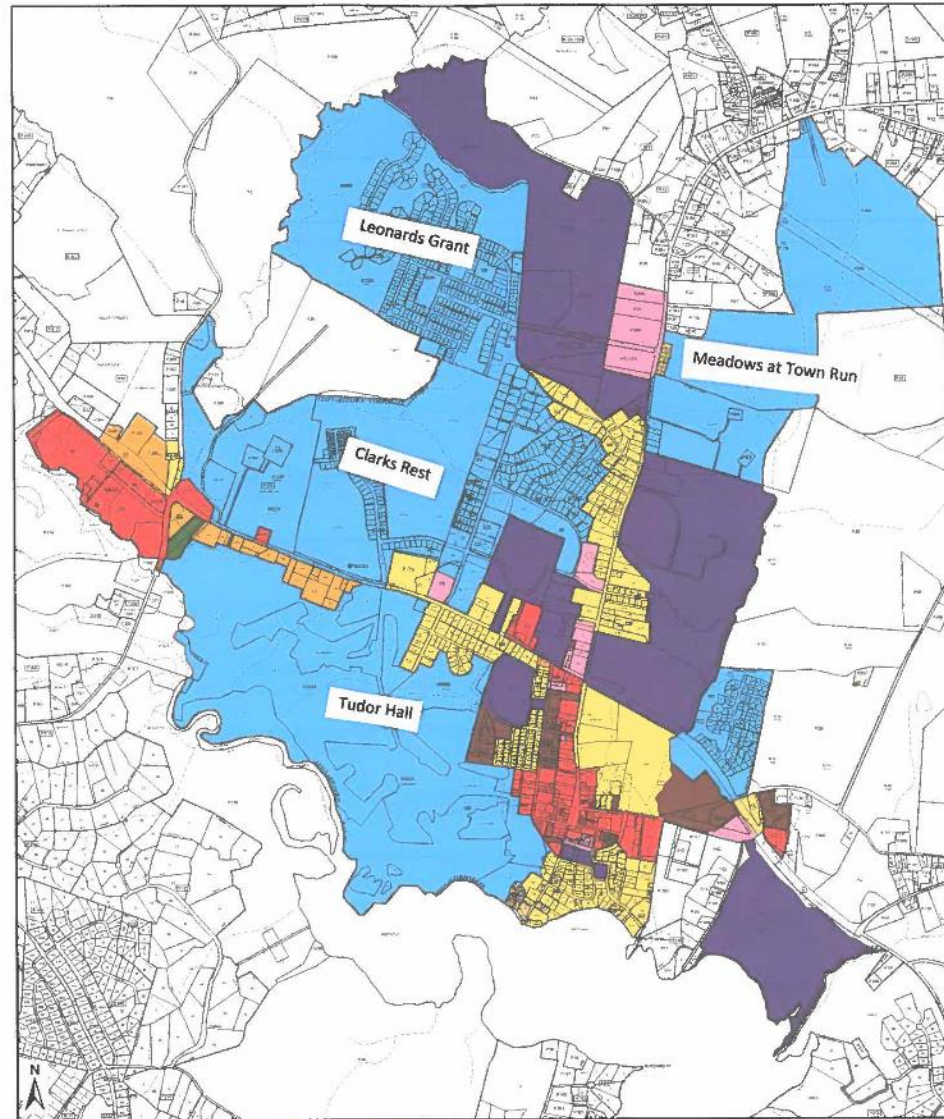
Redevelopment Projects



Port of Leonardtown Winery



Leonardtown Zoning



County zoning L-CM L-PUDM L-RSF
L-CB L-CO L-RMF
L-CH L-IO L-RP

0 0.1 0.2 0.4 0.6 0.8 Miles

Date: 2/27/2017



Residential Development

Leonard's Grant- 340 single family-Complete 2017.

Clarks Rest- 340 single and multi family units- Underway.

Meadows at Town Run- 107 single family- Underway.

Meadows at Town Run II- Next phase- 400 units to include apartments, townhomes and single family homes on 210 acres. Conceptual stage.

Shepherd's Old Field Market



LEONARDTOWN arts
entertainment
DISTRICT



The Hamptons at Leonardtown

- 142 Unit Luxury Apartments
- Elevators
- Walkable to downtown
- Pool and Clubhouse



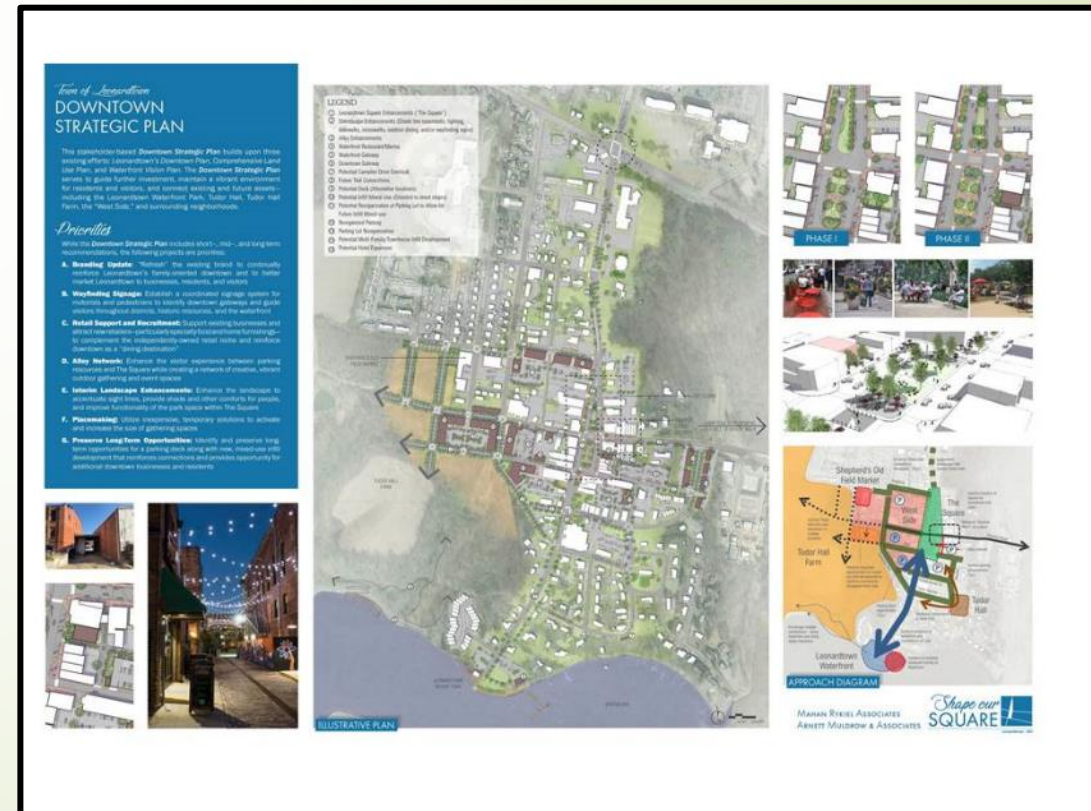
Plans and Studies can be your road map!

- Utilities Masterplan
- Transportation Plan
- Downtown Plan
- Comprehensive Plan
- Waterfront Plan



2019 Downtown Strategic Economic Development Plan

- Good facilitator
- Broad participation and inclusion
- Community buy-in
- Consistency



Covid Impacts



Waterfront Revitalization

2002 Conditions



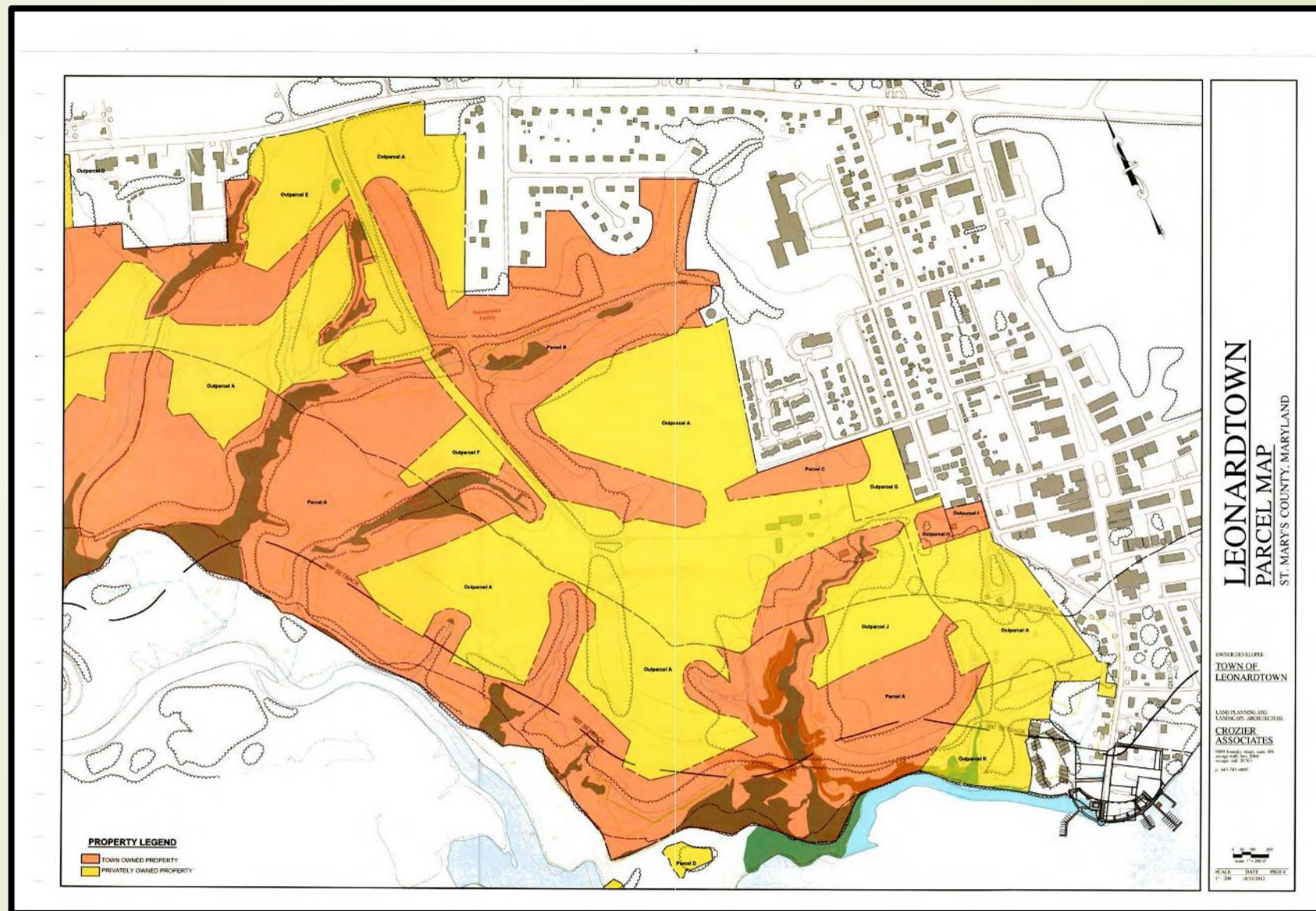
Leonardtown Wharf Today



What's Next?



Downtown Strategic Development Plan II- Waterfront and West Fenwick Districts



What I have learned!

- Vision
- Consistency
- Flexibility
- Partnerships

