

# DESIGNING FOR PANDEMICS



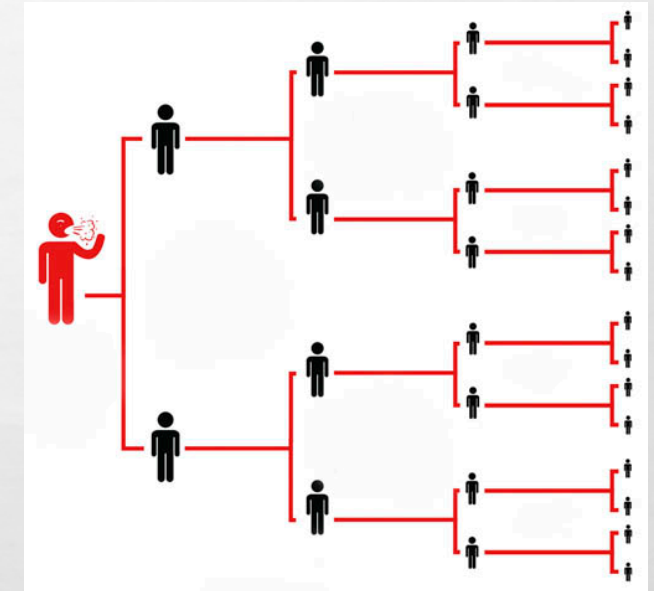
# COMMUNICABLE DISEASES

- **WHAT ARE COMMUNICABLE DISEASES? (\*)**

- **A COMMUNICABLE DISEASE IS ONE THAT IS SPREAD FROM ONE PERSON OR ANIMAL TO ANOTHER, THROUGH:**

- **PHYSICAL CONTACT WITH AN INFECTED PERSON – TOUCH, SALIVA, DROPLETS**
- **CONTACT WITH A CONTAMINATED SURFACE OR MEDIUM**
  - **OBJECTS, FOOD, BLOOD, WATER, AIR**

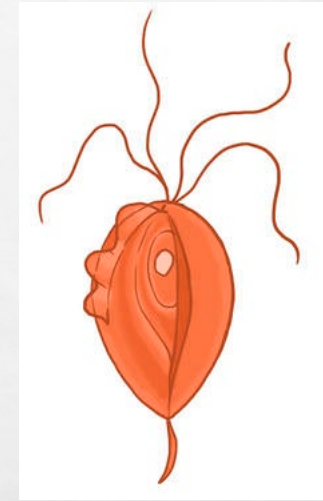
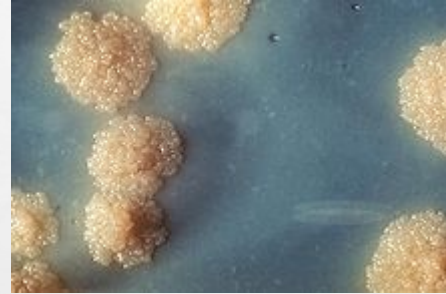
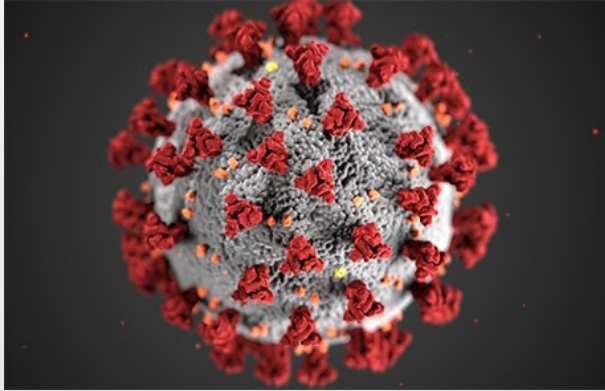
- **INSECT AND ANIMAL BITES**



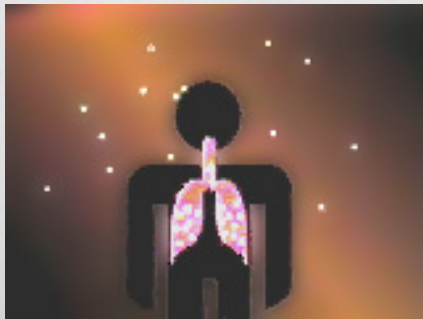
(\*) SOURCE: ALAMEDA COUNTY PUBLIC HEALTH DEPARTMENT

# COMMUNICABLE DISEASES

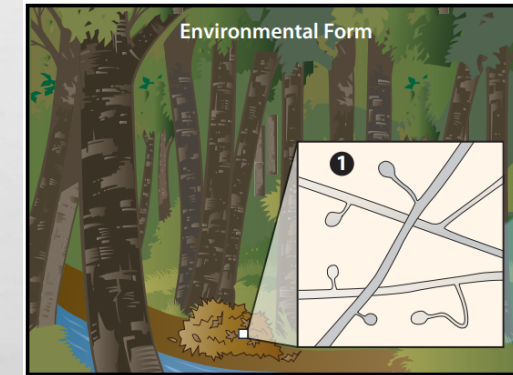
- **CAUSED BY MICROORGANISMS: VIRUSES, BACTERIA, FUNGI, PROTISTS**



- **DISEASE TYPES - AIRBORNE, WATERBORNE, FOODBORNE, ENVIRONMENTAL**



## Biology of Blastomycosis





# COMMUNICABLE DISEASES

- **WHY DO PLANNERS CARE ABOUT THEM?**
  - **INFECTION RATES, TRANSMISSION, AND MORTALITY RATES**
  - **ARCHITECTURE AND URBAN DESIGN CAN ENHANCE OR IMPEDE THE SPREAD OF DISEASE**
- **HOW DO COMMUNICABLE DISEASES BECOME A PUBLIC HEALTH PROBLEM**
  - **INFECTION RATES – HOW MANY PEOPLE BECOME SICK**
  - **TRANSMISSION – HOW QUICKLY DOES THE DISEASE SPREAD AND HOW FAR DOES IT SPREAD**
  - **MORTALITY RATES – HOW MANY PEOPLE DIE FROM THE DISEASE PER FIXED POPULATION**
  - **THE PRIMARY GOAL IS TO AVOID UNCONTROLLED SPREAD**

# COMMUNICABLE DISEASES

- **MITIGATING THE IMPACT OF COMMUNICABLE DISEASE DEPENDS ON**
  - **THE TYPE OF MICROORGANISM**
  - **THE TYPE OF TRANSMISSION**
  - **CHOOSING AN EFFECTIVE RESPONSE**
  
- **PLANNERS USUALLY FOCUS ON TRANSMISSION MITIGATION WITH DESIGN APPROACHES**
  - **ZONING SETBACKS FOR AIR CIRCULATION – LET THE WIND DO ITS JOB AND BLOW THE DISEASE AWAY**



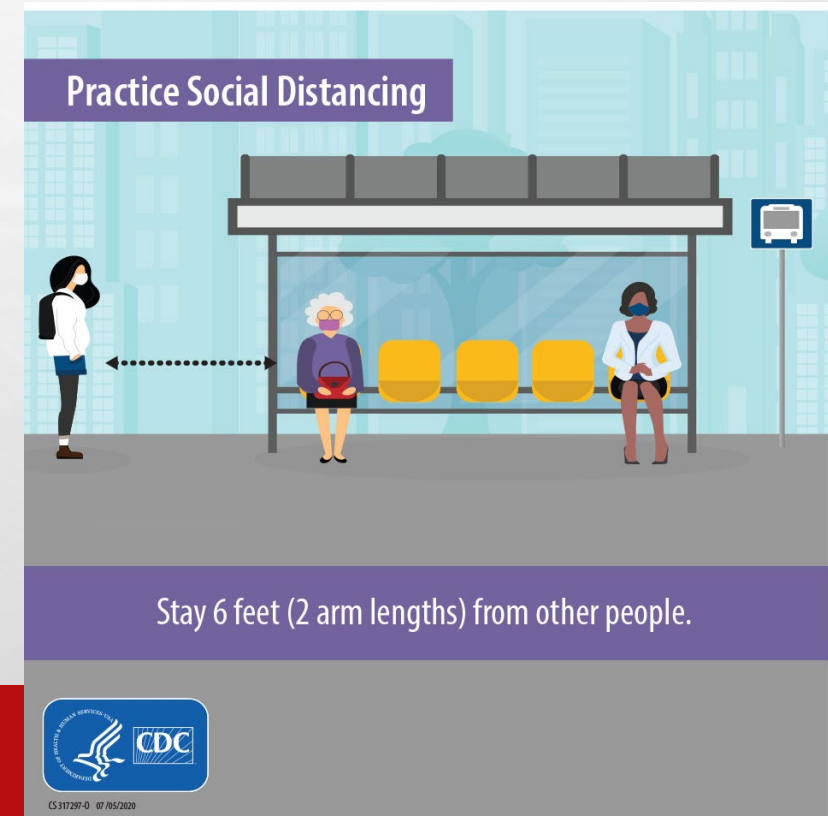
# WHAT IS A PANDEMIC?

- **EPIDEMIC VERSUS PANDEMIC – DEFINITIONS FROM THE WORLD HEALTH ORGANIZATION:**
  - **EPIDEMIC = “AFFECTING MANY PERSONS AT THE SAME TIME, AND SPREADING FROM PERSON TO PERSON IN A LOCALITY WHERE THE DISEASE IS NOT PERMANENTLY PREVALENT” (OCCURRING IN A REGION OR COMMUNITY)**
  - **PANDEMIC = “A WORLDWIDE SPREAD OF A NEW DISEASE” (OCCURRING WORLDWIDE OR CONTINENTWIDE)**
- **WHAT IS “ENDEMIC”?**
  - **ENDEMIC = A DISEASE THAT IS RESTRICTED TO A PARTICULAR LOCATION, REGION, OR POPULATION (TROPICAL)**
- **HOW OFTEN DO PANDEMICS OCCUR?**
  - **FLU PANDEMICS OCCUR EVERY 30-35 YEARS, BASED ON THE 10 FLU PANDEMICS IN THE LAST 320 YEARS**
  - **COVID-19 IS THE FIRST PANDEMIC CAUSED BY A CORONAVIRUS**

# MITIGATING AIRBORNE DISEASES

- **SOCIAL DISTANCING**

- **MAINTAIN A 6 FOOT DISTANCE BETWEEN EACH PERSON**
- **LIMIT OR PROHIBIT GROUPS AND INDOOR GATHERINGS/USES (EXAMPLE: RESTAURANTS/BARS/CONCERTS)**
- **TELEWORK**
- **USE DELIVERY INSTEAD OF IN-PERSON SHOPPING/DINING**



# MITIGATING AIRBORNE DISEASES

- **AIR FILTRATION/DILUTION**

- **FACE COVERINGS**

- **HEATING, VENTILATION, & AIR CONDITIONING (HVAC) CIRCULATION AND FRESH AIR INTAKE RATIO**

- **OUTDOOR SEATING, OUTDOOR SALES, OUTDOOR FITNESS**





# MITIGATING AIRBORNE DISEASES

- **CHEMICAL AND ULTRAVIOLET TREATMENT**



# IMPLICATION FOR DESIGN STRATEGIES

- **SOCIAL DISTANCING – IN-PERSON ACTIVITIES**

- **6 FOOT DISTANCE BETWEEN PEOPLE**

- **SIDEWALKS AND PATHS**

- **BIKE LANES VS. CYCLE TRACKS**

- **ENTRANCES – NEED LARGER VESTIBULES AND SIDEWALK AREAS FOR LINES OF PEOPLE WAITING TO COME IN**

- **DELIVERY – NEED MORE SHORT-TERM PARKING FOR DELIVERY VEHICLES, AND SPACES MAY NEED TO BE LARGER**

- **PICK-UP – NEED MORE SHORT-TERM PARKING FOR PICKING UP ONLINE AND PHONE ORDERS**



# IMPLICATION FOR DESIGN STRATEGIES

- **SOCIAL DISTANCING - TELEWORK**

- **INTERNET INFRASTRUCTURE IS CRITICAL (LANDLINE AND WIRELESS/WIFI)**
- **REDUCED TRAFFIC, LOWER POLLUTION, FEWER ROADS, LESS TRANSIT, REDUCED PARKING DEMAND?**
- **LIVE ANYWHERE, SO INCREASED SPRAWL, SEGREGATED USES, AND DECENTRALIZATION?**



# IMPLICATION FOR DESIGN STRATEGIES

- **AIR FILTRATION**
  - **HVAC CIRCULATION – SEPARATE PRIVATE AREAS FROM COMMON AREAS (RESIDENTIAL, OFFICE, LAB, R&D)**
  - **OUTDOOR SEATING – SIDEWALKS, REMOVAL OF PARKING**



- **ULTRAVIOLET TREATMENT – SOLAR GLASS WALLS WITH OR WITHOUT HVAC INTEGRATION**

# SOCIAL DISTANCING - DESIGN CHALLENGES

- **APARTMENT BUILDINGS**

- **ENTRANCES – OPEN OR ENCLOSED? / UNIT ENTRANCES – FOYER/SPACE TO DROP/SEPARATE “OUTSIDE” STUFF**
- **PRIVATE OUTDOOR SPACE: BALCONIES, PATIOS, ROOF-TOP DECKS**
- **AIR CIRCULATION – SEPARATE FOR PRIVATE AND COMMON AREAS? MORE FRESH AIR?**
- **DENS/LOFTS/WALK-IN CLOSETS – HOME OFFICE SPACES**



# **SOCIAL DISTANCING - DESIGN CHALLENGES**

- **COMMERCIAL BUILDINGS**

- **VESTIBULES, COVERED ENTRANCES, ARCADES**
- **OUTDOOR EMPLOYEE SPACE FOR EATING, EXERCISING, SOCIALIZING/COLLABORATING FROM A DISTANCE**

- **RESTAURANTS**

- **OUTDOOR SEATING – ADJACENT SIDEWALKS , PARKING LOTS, NEARBY PARKS/OPEN SPACE**
- **COLD WEATHER/INCLEMENT WEATHER**





# **SOCIAL DISTANCING – DESIGN IMPLEMENTATION CHALLENGES**

- **INFRASTRUCTURE**

- **SIDEWALKS, PATHS, ON-STREET PARKING CONVERSION**
- **WIRELESS NETWORKS FOR TELEWORKING/DELIVERY – PRIVATE VERSUS PUBLIC**

- **COSTS**

- **WHO SHOULD PAY FOR DESIGN CHANGES AND NEW/ALTERED INFRASTRUCTURE?**
- **OUTDOOR EMPLOYEE SPACE FOR EATING, EXERCISING, SOCIALIZING/COLLABORATING FROM A DISTANCE**

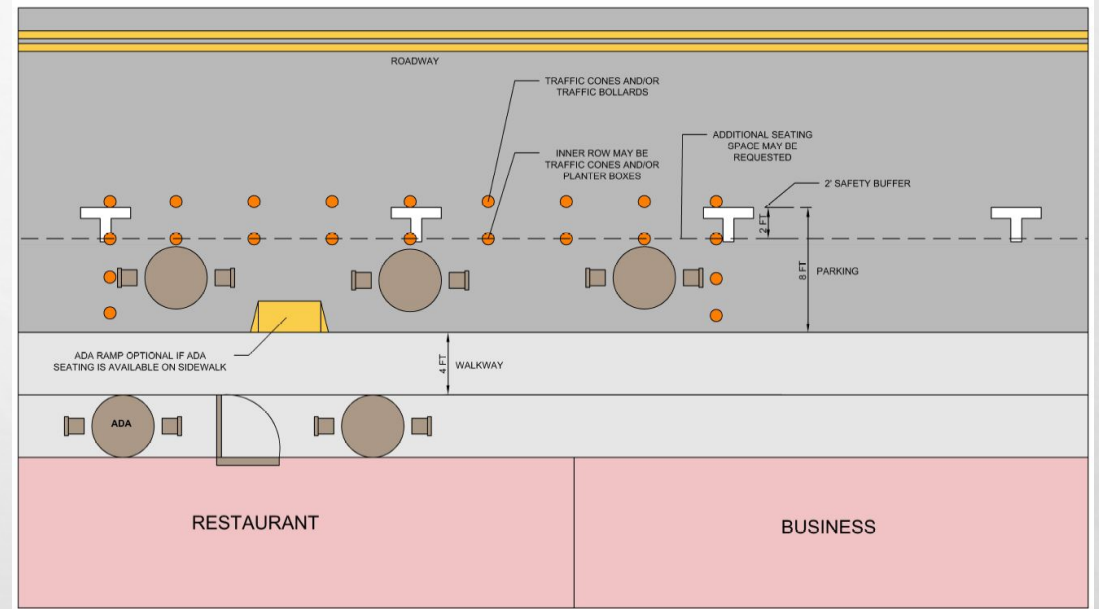
- **APPROVALS/TIME/DELAYS**

- **PERMITS FOR OUTDOOR SEATING**
  - **PLANNING COMMISSION APPROVALS FOR SITE PLAN CHANGES**
- 

# OTHER DESIGN CHALLENGES

- **WHAT HAPPENS WHEN THE PANDEMIC ENDS?**

- **FLEXIBILITY IS KEY TO SUCCESSFUL DESIGN APPROACHES THAT WILL BE PRACTICAL AND USEABLE BEFORE, DURING, AND AFTER A PANDEMIC**



- **WHAT ABOUT CLIMATE CHANGE?**

- **DESIGN SHOULD SEEK TO ADDRESS MULTIPLE GLOBAL CHALLENGES**



# OTHER DESIGN CHALLENGES

- **GENERAL DESIGN STRATEGIES**

- **AVOID DESIGNING IN A VACUUM**
- **AVOID DESIGN THAT CAN ONLY BE USED FOR A SPECIFIC CRISES OR WITHIN A CONSTRAINED TIME PERIOD**
- **DESIGN APPROACHES THAT INCORPORATE FLEXIBILITY AND MULTIPLE APPLICABILITY ARE KEY**



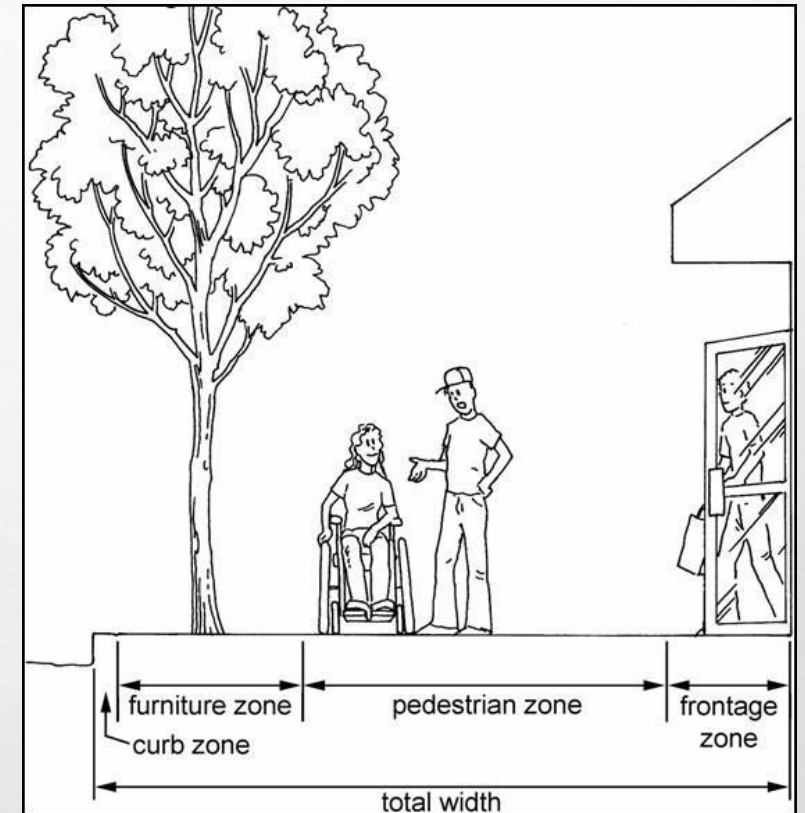
# SIDEWALK DESIGN

- **SIDEWALKS ARE USED BY PEDESTRIANS, AND SERVE OTHER PURPOSES**
  - **OUTDOOR SEATING AND FURNITURE**
  - **BUS SHELTERS**
  - **OUTDOOR DINING AREAS**
  - **GREENERY (TREES, STORMWATER MANAGEMENT, GRASS, ETC.)**
  - **VENDORS (FOOD TRUCKS, NEWS STANDS, ETC.)**
  - **MICROMOBILITY STATIONS (SCOOTERS, BIKES, ETC.)**
  - **SAFETY/DEFENSE (BOLLARDS, LIGHTS, FENCES, ETC.)**



# SIDEWALK DESIGN

- **SIDEWALK WIDTH DEPENDS ON SEVERAL FACTORS**
  - **ADJACENT AND SURROUNDING LAND USES**
    - “CONNECTION” SIDEWALKS VERSUS “MULTIUSE” SIDEWALKS
    - MINIMUM “CONNECTION” WIDTH OF 6 FEET FOR SOCIAL DISTANCING?
  - **PEDESTRIAN TRAFFIC VOLUME**
  - **SPACE NEEDED FOR OTHER FUNCTIONS (SEATING, VENDORS, ETC.)**
  - **SPACE FOR UTILITIES, PUBLIC SIGNS, AND TRAFFIC CONTROL**
  - **PLACE-MAKING CONSIDERATIONS:**
    - **PAVEMENT TYPE / UNIQUE PATTERNS**
    - **EXCLUSIVE AMENITIES / FURNITURE / GREENSPACE**



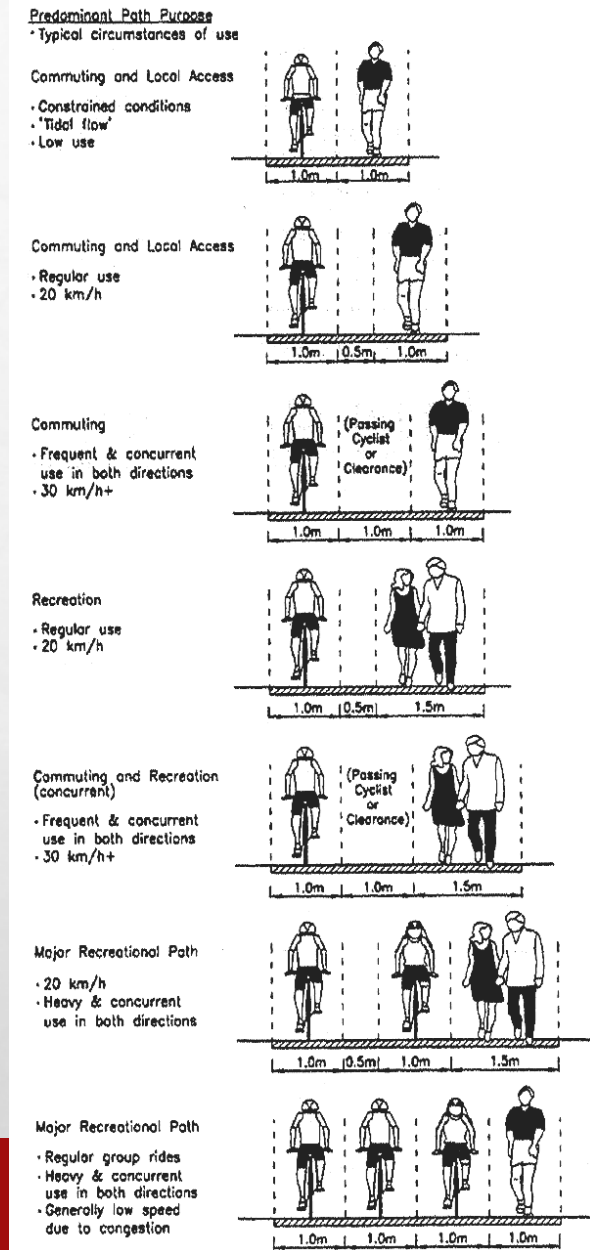
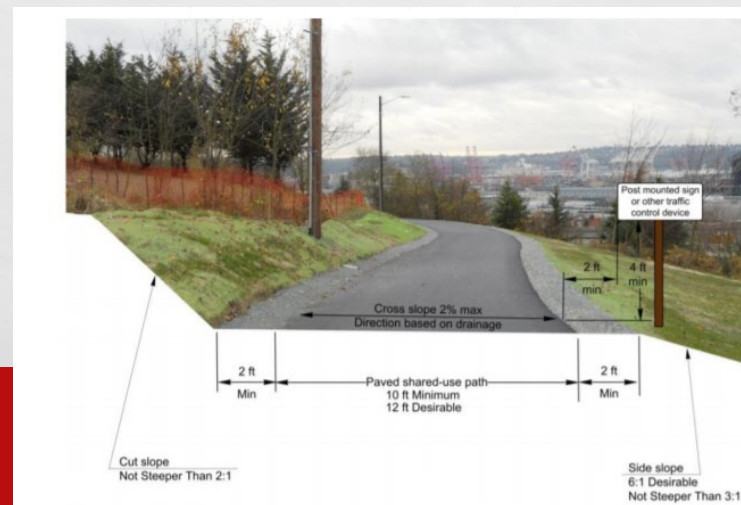
# MULTIUSE PATH DESIGN

- **BICYCLES AND PEDESTRIANS USE THESE PATHS**
  - **SIGNS AND FURNITURE ARE USUALLY OFF TO THE SIDE OF THE PATH**
  - **MAY INCLUDE PAVEMENT MARKINGS, MILE MARKERS, ETC.**
  - **CAN BE ON-STREET OR OFF-STREET**



# MULTIUSE PATH DESIGN

- **PEDESTRIANS: FOOTPRINT IS 1.5 FEET IN WIDTH**
  - **2 PEDESTRIANS = 3 FEET + 6 FEET FOR SOCIAL DISTANCING = 9 FEET**
  - **BUT PEDESTRIANS CAN WALK ON GRASS, DIRT,, ETC., SO PAVED WITH OF 6 FEET IS OK**
- **BICYCLES: FOOTPRINT IS 3 FEET IN WIDTH, SO THIS WILL GOVERN THE DESIGN**
  - **2 BIKES = 6 FEET IN WIDTH + 6 FEET FOR SOCIAL DISTANCING = 12 FEET WIDE**
  - **EXISTING PATHS IN GAITHERSBURG RANGE FROM 8 FEET TO 10 FEET**
  - **HIGHER SPEEDS REQUIRE ADDITIONAL WIDTH**



# RESOURCES

- **BALTIMORE CITY'S DESIGN FOR DISTANCING**

- [HTTPS://STATIC1.SQUARESPACE.COM/STATIC/5EC2E7939CCFE46B4D0946B4/T/5F45462926664655FBB1F1C7/1598375472180/DFD\\_IDEAS-GUIDEBOOK.PDF](https://static1.squarespace.com/static/5ec2e7939ccfe46b4d0946b4/t/5f45462926664655fbb1f1c7/1598375472180/dfd_ideas-guidebook.pdf)

- **NEW YORKER ARTICLE ABOUT ARCHITECTURAL DESIGN RESPONSES TO THE PANDEMIC**

- [HTTPS://WWW.NEWYORKER.COM/CULTURE/DEPT-OF-DESIGN/HOW-THE-CORONAVIRUS-WILL-RESHAPE-ARCHITECTURE](https://www.newyorker.com/culture/dept-of-design/how-the-coronavirus-will-reshape-architecture)

- **CONVERSION OF PARKING**

- [HTTPS://WWW.AXIOS.COM/THE-FUTURE-OF-PARKING-GARAGES-98AE0851-885F-4BA8-A910-255C751CC38C.HTML](https://www.axios.com/the-future-of-parking-garages-98ae0851-885f-4ba8-a910-255c751cc38c.html)
- [HTTPS://6ABC.COM/WE PARK-WE PARK-WORKING-IN-PARKING-SPACES-SAN-FRANCISCO/5282482/](https://6abc.com/wepark-wepark-working-in-parking-spaces-san-francisco/5282482/)

# RESOURCES

- **SIDEWALK DESIGN**

- [HTTPS://SAFETY.FHWA.DOT.GOV/PED\\_BIKE/UNIVCOURSE/PDF/SWLESS13.PDF](https://safety.fhwa.dot.gov/ped_bike/univcourse/pdf/swless13.pdf)

- **MULTIUSE PATH DESIGN**

- [HTTPS://WSDOT.WA.GOV/PUBLICATIONS/MANUALS/FULLTEXT/M22-01/1515.PDF](https://wsdot.wa.gov/publications/manuals/fulltext/m22-01/1515.pdf)
- [HTTPS://WWW.MASS.GOV/DOC/MASSDOT-DESIGN-GUIDE-CHAPTER-11-SHARED-USE-PATHS-AND-GREENWAYS/DOWNLOAD](https://www.mass.gov/doc/massdot-design-guide-chapter-11-shared-use-paths-and-greenways/download)

- **PANDEMIC FREQUENCY**

- [HTTPS://WWW.CDC.GOV/FLU/PANDEMIC-RESOURCES/BASICS/PAST-PANDEMICS.HTML](https://www.cdc.gov/flu/pandemic-resources/basics/past-pandemics.html)
- [HTTPS://WWW.CIDRAP.UMN.EDU/NEWS-PERSPECTIVE/2007/02/SEVERE-PANDEMIC-NOT-OVERDUE-ITS-NOT-WHEN-IF](https://www.cidrap.umn.edu/news-perspective/2007/02/severe-pandemic-not-overdue-its-not-when-if)

# QUESTIONS?

- **CONTACT: [KIRK.EBY@GAITHERSBURGMD.GOV](mailto:KIRK.EBY@GAITHERSBURGMD.GOV)**

