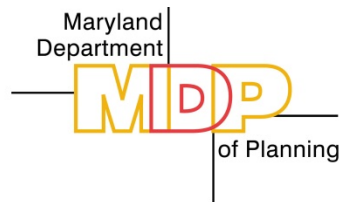
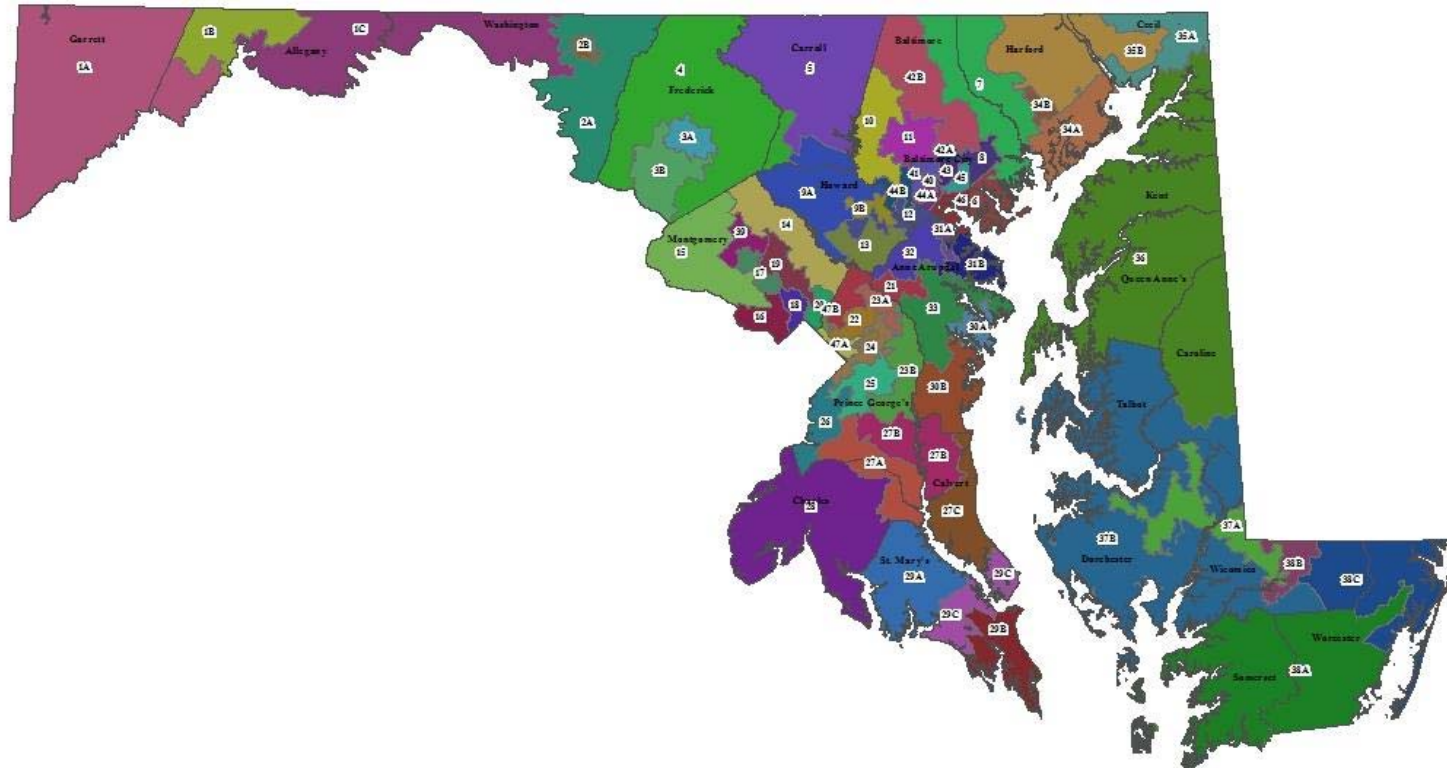


Demographic, Socioeconomic, Housing and Journey to Work Data for Maryland's House of Delegates Legislative Districts

American Community Survey 2009 – 2013 Five-Year Estimates



Martin O'Malley, *Governor*

Anthony Brown, *Lt. Governor*

Richard Eberhart Hall, *Secretary*

Amanda Stakem Conn, *Deputy Secretary*

Sustainable — Attainable

Description of the Data

What is the American Community Survey (ACS)? What are Five-Year Estimates?

The American Community Survey (ACS) is a nationwide survey designed to collect demographic, social, economic, and housing data every year. The U.S. Census Bureau releases data from the ACS in the form of both single-year and multiyear estimates. Unlike previous Census Bureau data products, the ACS is not concerned with creating population counts, but with collecting data on population characteristics. In the past, population characteristics were collected every ten years through the “long form” of the decennial Census, which was sent to a sample of the total population (approximately one in six households in 2000). The ACS replaces this form with a program that initially sampled 250,000 unique housing unit addresses per month, or 3 million per year. The sampling rate has since been increased with the 2012 ACS sampling 3.54 million unique address. But even after five years of accumulated sampling, the ACS will still have a smaller sample size than the decennial Census, which makes it important to pay attention to margins of error associated with these estimates (see “What is a Margin of Error” below).

This rolling sample allows population characteristics for large areas (those over 65,000 in population) to be reported yearly, instead of once every ten years under the previous “long form” system. Characteristics for areas containing between 20,000 and 65,000 persons are reported as three-year period estimates, as not enough households are sampled in one year to give reliable estimates. Characteristics for areas containing less than 20,000 persons, again due to their small size, are reported as five-year period estimates. These differences from the decennial Census mean that ACS data is more timely, but cannot be used to pinpoint a particular point in time (unlike the decennial Census, which is for April 1st of the census year). For more information on the ACS, how the data is collected, and how it should be used, please refer to *A Compass for Understanding and Using American Community Survey Data: What General Data Users Need to Know* (October 2008), available online from the U.S. Census Bureau at: http://www.census.gov/acs/www/guidance_for_data_users/handbooks/

What is a Margin of Error (MoE)?

Because the ACS is a sample of a population, its results are subject to sampling error. This error also existed in the previous “long form” but due to the larger sample size it was generally not reported by the Census Bureau. Because of the methodology and the smaller sample sizes used to create the ACS, the reported data may have larger errors than experienced data users are used to seeing. The Census Bureau now reports a margin of error (MoE) based on a 90 percent confidence level that allows data users to understand just how accurate the data is and how it should be used. Generally, three-year period estimates will have a smaller MoE than one-year estimates, and five-year period estimates will have the smallest MoE. Estimates with too few sample cases to create a reliable estimate are marked with the letter “N” in the tables. For more information on this subject, please refer to *American Community Survey Multiyear Accuracy of the Data (3-year 2011-2013 and 5-year 2009-2013)*, available online from the U.S. Census Bureau at http://www.census.gov/acs/www/Downloads/data_documentation/Accuracy/MultiyearACSAccuracyofData2013.pdf.

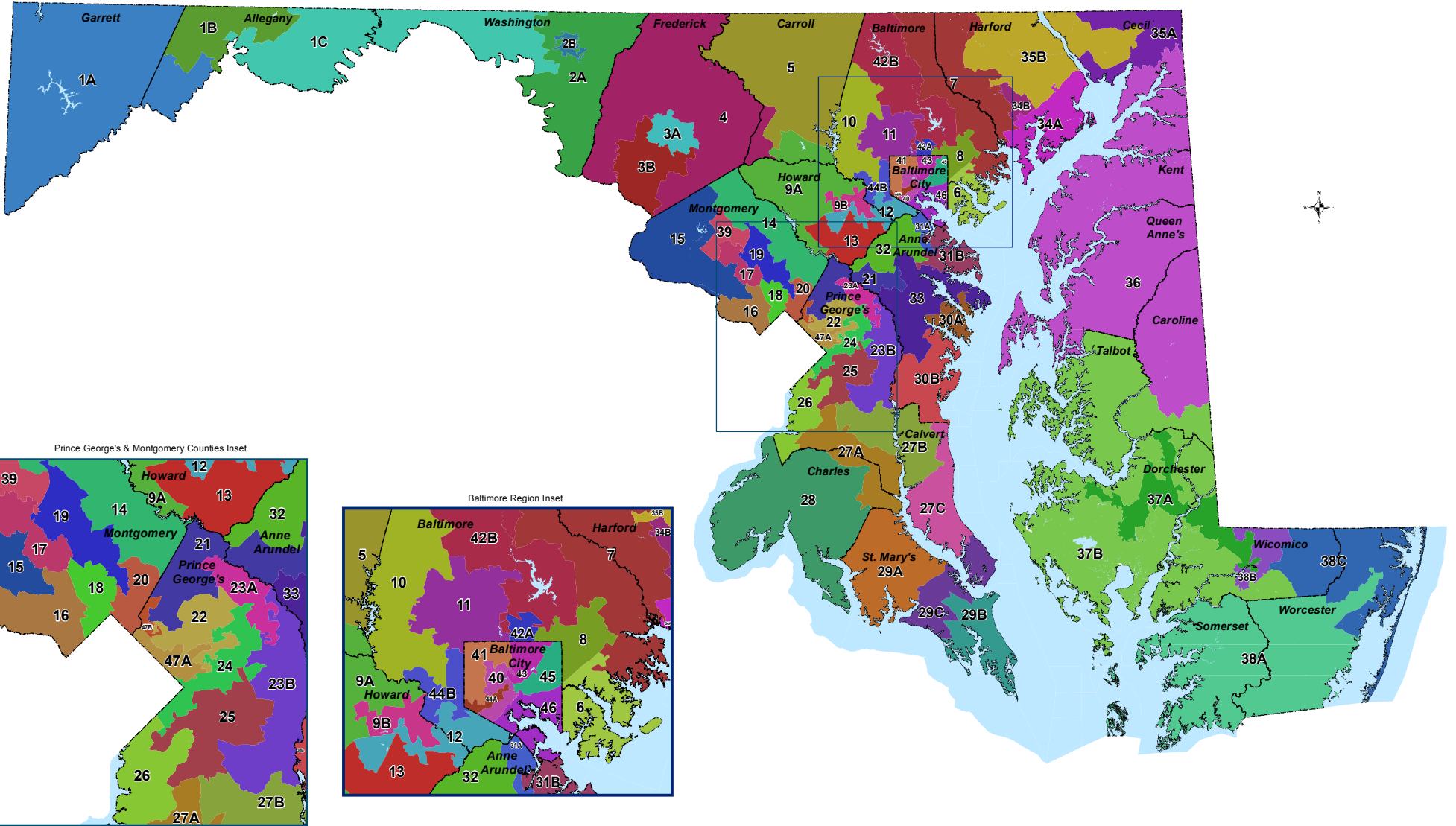
On February 24, 2012, Maryland's Legislative Districts, based on Census 2010 redistricting, took effect. The data in this handbook are for these district boundaries. These districts are displayed in the following map.

<http://www.mdp.state.md.us/PDF/Redistricting/2010maps/Leg/Statewide.pdf>

Additional data for legislative districts in a profile format can be on the Maryland Department of Planning's State Data Center web site at http://planning.maryland.gov/MSDC/American_Community_Survey/2009-2013ACS.shtml

Maryland 2012 Legislative Districts

SJR 1/HJR 1
February 24, 2012



General Demographics

From the American Community
Survey's 2009 – 2013 Five-Year
Estimates

2009-2013 American Community Survey Five-Year Estimates for Maryland Legislative Districts (House of Delegates)

	Total Population	MoE* +/-	Median Age	MoE* +/-	Percent Age 65 & Over	MoE* +/-	Percent Foreign Born	MoE* +/-	Percent Speak English "Less than Very Well"	MoE* +/-	Percent Age 65 & Over Living Alone	MoE* +/-	Percent Female Headed Household with own Children under 18	MoE* +/-
<i>Jurisdictions</i>														
Legislative Subdistrict 1A	40,922	524	43.1	0.7	18.5	0.6	1.4	0.3	1.0	0.6	12.7	1.2	5.2	1.0
Legislative Subdistrict 1B	41,158	780	41.0	0.7	17.6	0.7	2.4	0.8	0.9	0.3	13.9	1.4	6.4	1.2
Legislative Subdistrict 1C	40,843	1,214	41.5	1.3	18.5	0.9	1.4	0.3	1.1	0.3	12.5	1.3	5.4	1.1
Legislative Subdistrict 2A	89,011	922	41.9	0.5	15.1	0.4	4.7	0.7	2.0	0.4	11.0	1.1	5.6	0.9
Legislative Subdistrict 2B	40,909	211	33.8	0.9	12.0	0.7	6.9	1.2	3.8	1.1	11.3	1.4	12.4	1.5
Legislative Subdistrict 3A	78,815	678	35.7	0.6	11.9	0.5	16.5	1.4	7.6	1.0	9.4	0.9	6.8	1.3
Legislative Subdistrict 3B	39,341	1,114	38.2	1.4	10.7	0.9	9.7	1.4	3.1	0.8	9.9	1.4	5.4	1.5
Legislative District 4	130,620	1,301	40.7	0.4	11.8	0.4	4.7	0.4	1.8	0.3	7.3	0.7	4.3	0.6
Legislative District 5	127,972	848	41.8	0.4	13.9	0.3	3.5	0.4	1.4	0.3	9.2	0.7	4.7	0.6
Legislative District 6	118,333	1,935	39.3	0.8	15.3	0.5	6.4	0.8	2.6	0.5	12.2	0.8	8.9	0.9
Legislative District 7	130,508	2,547	42.2	0.6	14.9	0.5	6.0	0.8	2.1	0.4	7.6	0.6	5.2	0.6
Legislative District 8	123,518	1,756	38.1	0.6	14.7	0.6	10.9	0.8	4.2	0.5	11.4	0.9	8.2	0.8
Legislative Subdistrict 9A	87,745	1,611	43.7	0.6	13.5	0.5	10.4	0.9	3.9	0.6	6.8	1.1	4.2	1.0
Legislative Subdistrict 9B	44,067	1,138	39.8	0.8	11.1	0.7	24.6	1.4	10.8	1.5	7.1	1.2	5.5	1.4
Legislative District 10	121,679	2,334	37.5	0.7	11.2	0.4	14.5	1.0	6.5	0.8	7.6	0.7	10.9	1.0
Legislative District 11	118,883	1,981	40.8	0.5	17.2	0.6	17.0	1.2	7.7	0.8	13.0	1.0	6.8	0.7
Legislative District 12	121,565	2,551	35.7	0.5	13.9	0.5	12.5	1.1	5.9	0.8	10.4	0.9	7.0	0.9
Legislative District 13	125,068	1,722	36.6	0.5	8.3	0.4	19.9	0.9	8.6	0.8	5.4	0.6	7.2	1.0
Legislative District 14	126,757	1,781	41.1	0.7	13.1	0.5	23.2	1.0	9.2	0.8	8.8	0.8	6.6	0.9
Legislative District 15	121,190	1,597	40.2	0.5	11.2	0.4	31.2	1.2	12.2	0.9	6.2	0.7	5.3	0.8
Legislative District 16	123,645	1,615	43.8	0.6	18.5	0.5	24.0	1.0	6.9	0.6	12.0	0.8	3.4	0.5
Legislative District 17	130,318	609	37.1	0.6	12.2	0.5	37.1	1.2	18.6	1.2	8.3	0.7	7.3	0.9
Legislative District 18	121,020	1,837	37.7	0.7	12.6	0.4	32.4	1.2	17.9	1.1	9.8	0.8	5.6	0.8
Legislative District 19	122,944	2,131	41.2	0.7	17.6	0.5	34.4	1.3	17.3	1.0	14.1	1.0	6.1	0.9
Legislative District 20	121,247	1,836	34.6	0.7	9.1	0.4	37.4	1.2	20.4	1.2	7.1	0.7	7.0	0.9
Legislative District 21	127,336	2,063	31.2	0.5	9.4	0.5	23.5	1.0	10.1	0.9	7.1	0.6	7.0	1.0
Legislative District 22	128,549	2,070	32.8	0.5	8.3	0.3	32.2	1.3	12.5	1.0	6.0	0.6	11.1	1.0
Legislative Subdistrict 23A	39,728	1,333	35.9	0.8	9.4	1.0	18.9	1.9	5.5	1.2	4.0	0.9	9.2	1.9
Legislative Subdistrict 23B	81,067	1,634	39.7	0.7	11.2	0.7	10.5	1.0	3.2	0.6	7.6	0.9	8.3	1.2
Legislative District 24	114,806	2,052	36.5	0.8	10.4	0.5	12.0	1.0	4.1	0.7	7.7	0.7	13.4	1.2
Legislative District 25	115,479	1,954	37.0	0.7	10.5	0.5	7.6	0.8	2.2	0.5	6.9	0.7	13.2	1.1
Legislative District 26	118,662	2,381	40.4	0.7	12.4	0.4	10.7	0.9	4.3	0.6	7.3	0.6	10.1	1.1
Legislative Subdistrict 27A	45,117	1,839	40.1	1.0	11.0	0.9	6.2	1.4	2.6	1.1	4.5	0.9	6.8	1.3
Legislative Subdistrict 27B	43,333	1,214	42.3	1.0	11.6	0.8	3.9	0.6	2.0	0.5	5.0	1.1	4.6	1.1
Legislative Subdistrict 27C	42,821	857	40.0	0.9	10.7	0.6	3.0	0.6	1.1	0.3	6.9	1.1	7.9	1.4

* MoE: Margin of Error

2009-2013 American Community Survey Five-Year Estimates for Maryland Legislative Districts (House of Delegates)

	Total Population	MoE* +/-	Median Age	MoE* +/-	Percent Age 65 & Over	MoE* +/-	Percent Foreign Born	MoE* +/-	Percent Speak English "Less than Very Well"	MoE* +/-	Percent Age 65 & Over Living Alone	MoE* +/-	Percent Female Headed Household with own Children under 18	MoE* +/-
Legislative District 28	130,236	1,078	37.2	0.4	9.9	0.2	5.5	0.6	2.2	0.4	6.3	0.6	8.4	0.9
Legislative Subdistrict 29A	42,910	1,308	39.0	1.6	13.2	0.8	1.6	0.5	1.1	0.4	6.6	1.2	5.1	1.4
Legislative Subdistrict 29B	42,889	1,125	31.4	0.5	7.4	0.7	6.1	1.0	2.8	0.9	4.9	1.0	8.1	1.9
Legislative Subdistrict 29C	42,840	1,476	38.6	1.6	11.9	0.9	3.6	0.8	1.2	0.4	9.5	1.3	5.4	1.3
Legislative Subdistrict 30A	84,360	2,085	38.4	0.9	15.5	0.7	12.6	1.2	6.0	1.0	13.0	1.1	5.8	1.0
Legislative Subdistrict 30B	42,540	1,320	43.4	0.7	13.9	1.0	3.0	0.7	0.9	0.4	7.7	1.2	4.3	1.0
Legislative Subdistrict 31A	43,228	1,543	36.2	1.1	13.5	1.0	11.5	2.2	8.0	2.0	10.8	1.4	8.6	1.7
Legislative Subdistrict 31B	84,293	1,804	39.6	0.7	11.9	0.6	3.6	0.6	2.0	0.6	6.5	0.9	4.1	1.0
Legislative District 32	134,236	2,166	34.5	0.5	9.1	0.4	11.1	0.8	4.4	0.5	6.2	0.6	8.2	0.9
Legislative District 33	129,586	1,872	41.4	0.5	13.5	0.5	5.7	0.6	2.5	0.5	7.8	0.7	3.7	0.7
Legislative Subdistrict 34A	79,538	1,264	35.5	0.7	10.7	0.5	6.3	0.8	3.1	0.6	8.1	1.0	11.0	1.5
Legislative Subdistrict 34B	43,007	1,046	38.6	1.2	12.8	0.8	4.9	0.9	2.2	0.6	9.3	1.4	4.8	1.3
Legislative Subdistrict 35A	41,794	1,251	39.6	1.3	13.4	0.6	2.8	1.1	1.2	0.5	9.5	1.4	5.4	1.3
Legislative Subdistrict 35B	86,248	1,573	41.4	0.6	12.8	0.6	3.1	0.5	1.1	0.3	6.8	0.9	3.9	0.8
Legislative District 36	127,955	888	41.5	0.4	15.5	0.2	3.8	0.3	2.2	0.3	10.6	0.7	6.6	0.8
Legislative Subdistrict 37A	43,132	1,249	34.1	1.4	13.3	0.9	10.0	1.7	7.5	1.7	10.8	1.4	16.1	1.9
Legislative Subdistrict 37B	85,207	1,091	45.7	0.6	20.2	0.5	4.3	0.4	2.0	0.4	12.3	1.0	6.7	0.8
Legislative Subdistrict 38A	46,151	730	38.2	0.8	15.1	0.6	3.6	0.6	1.2	0.4	11.2	1.5	8.3	1.6
Legislative Subdistrict 38B	41,209	1,287	32.4	1.5	13.6	0.8	8.5	1.5	5.6	1.5	10.0	1.5	9.0	1.6
Legislative Subdistrict 38C	40,749	952	50.0	1.1	25.4	0.9	5.0	1.0	1.7	0.8	13.3	1.5	4.2	0.9
Legislative District 39	122,353	2,267	34.4	0.6	6.9	0.4	37.7	1.6	18.9	1.3	4.0	0.5	7.8	0.8
Legislative District 40	112,612	2,423	34.3	0.8	12.2	0.4	6.0	0.7	2.5	0.5	12.8	0.9	10.9	1.0
Legislative District 41	114,668	2,593	40.6	0.9	17.3	0.5	7.3	0.9	2.6	0.5	15.0	0.9	9.1	0.9
Legislative Subdistrict 42A	42,733	1,258	32.3	1.2	15.2	0.9	11.3	1.4	3.7	1.2	15.9	1.6	3.9	0.9
Legislative Subdistrict 42B	81,514	1,453	44.8	0.8	18.4	0.7	9.0	0.9	3.4	0.5	12.8	0.9	4.2	0.8
Legislative District 43	117,530	2,520	34.3	1.0	11.6	0.5	7.8	0.6	2.7	0.4	10.8	0.9	10.2	1.0
Legislative Subdistrict 44A	40,353	1,471	32.7	1.2	11.1	0.9	3.0	0.9	1.3	0.5	9.5	1.3	18.9	2.0
Legislative Subdistrict 44B	79,911	1,752	38.2	1.0	13.0	0.7	10.5	1.1	4.6	0.6	9.4	0.9	9.3	1.3
Legislative District 45	115,540	2,359	34.7	0.7	10.1	0.4	5.9	0.8	2.6	0.6	9.4	0.7	14.3	1.3
Legislative District 46	120,742	2,559	31.8	0.4	8.3	0.4	11.3	0.8	7.6	0.8	8.6	0.7	10.3	1.0
Legislative Subdistrict 47A	84,293	1,432	33.3	0.7	9.1	0.5	30.6	1.5	15.0	1.3	7.8	0.8	12.3	1.2
Legislative Subdistrict 47B	44,966	1,669	30.9	0.7	5.7	0.6	60.5	2.1	46.0	2.7	3.9	0.9	9.1	1.7

Source: U.S. Census Bureau, 2009-2013 American Community Survey.
Prepared by the Maryland Department of Planning.

* MoE: Margin of Error

Socioeconomic Characteristics

From the American Community Survey's
2009 – 2013 Five-Year Estimates

2009-2013 American Community Survey Five-Year Estimates for Maryland Legislative Districts (House of Delegates)

	Percent Population Ages 25+ w/ less than High School Degree		Percent Population Ages 25+ w/ Bachelor's Degree or higher		Median Household Income		Percent of Persons Below Poverty Level		Percent Population with No Health Insurance		Percent Unemployed	Percent Receiving SNAP Benefits		Percent with a Disability		
	MoE* +/-		MoE* +/-		MoE* +/-		MoE* +/-		MoE* +/-		MoE* +/-	MoE* +/-	MoE* +/-		MoE* +/-	
<i>Jurisdictions</i>																
Legislative Subdistrict 1A	12.9	1.4	17.9	1.6	\$59,988	\$2,702	13.3	1.4	11.3	1.5	6.9	1.1	15.2	1.5	14.6	1.1
Legislative Subdistrict 1B	12.8	1.1	17.5	1.7	\$53,944	\$2,229	17.7	2.0	9.5	1.2	10.7	1.7	14.5	1.5	16.7	1.4
Legislative Subdistrict 1C	13.9	1.2	14.1	1.4	\$55,635	\$2,034	14.0	1.7	9.4	1.0	9.5	1.4	16.1	1.7	18.2	1.4
Legislative Subdistrict 2A	12.6	0.9	22.2	1.2	\$80,518	\$2,047	7.3	1.1	8.3	1.0	6.8	0.8	6.3	0.9	13.2	0.7
Legislative Subdistrict 2B	17.3	1.9	16.9	1.6	\$49,362	\$2,059	25.1	2.6	12.1	1.4	12.9	1.9	26.8	1.8	18.7	1.5
Legislative Subdistrict 3A	10.6	1.1	38.8	1.6	\$84,274	\$2,423	10.1	1.4	10.6	1.3	7.0	0.9	8.9	1.2	9.9	0.7
Legislative Subdistrict 3B	6.8	1.4	41.8	2.1	\$104,679	\$4,074	4.7	1.1	7.2	1.3	6.0	1.3	4.5	1.2	9.6	1.1
Legislative District 4	6.8	0.6	37.0	1.1	\$110,640	\$2,368	4.1	0.5	6.2	0.6	5.6	0.5	4.2	0.6	9.0	0.5
Legislative District 5	9.1	0.7	30.4	1.2	\$94,761	\$2,110	6.1	0.7	6.7	0.6	5.6	0.6	6.3	0.8	9.0	0.5
Legislative District 6	18.6	1.0	10.6	0.7	\$60,464	\$1,276	13.0	1.3	11.9	0.8	11.1	0.8	16.7	1.1	16.8	0.6
Legislative District 7	8.3	0.7	32.4	1.1	\$102,155	\$2,685	5.4	1.0	6.4	0.7	6.4	0.7	5.3	0.7	10.4	0.6
Legislative District 8	10.1	0.8	29.2	1.1	\$74,228	\$1,473	8.4	1.1	9.7	0.8	6.9	0.7	7.5	0.8	11.0	0.7
Legislative Subdistrict 9A	4.2	0.7	56.0	1.6	\$156,079	\$4,938	2.3	0.5	4.3	0.8	3.1	0.5	1.9	0.5	6.8	0.7
Legislative Subdistrict 9B	4.9	1.0	63.3	2.0	\$136,532	\$4,850	4.7	1.5	7.8	1.7	3.9	0.7	3.5	1.1	7.1	1.0
Legislative District 10	8.5	0.9	37.6	1.4	\$86,054	\$2,306	9.7	1.2	11.5	1.2	9.3	1.0	9.1	1.0	9.2	0.7
Legislative District 11	4.4	0.6	55.8	1.4	\$107,579	\$3,449	6.3	0.9	6.9	0.8	5.5	0.6	5.8	0.8	9.5	0.6
Legislative District 12	9.9	1.0	47.0	1.5	\$97,084	\$2,389	8.7	1.1	8.4	0.9	7.4	1.0	7.1	0.8	10.1	0.7
Legislative District 13	6.2	0.8	55.5	1.5	\$121,129	\$2,752	5.0	0.8	8.9	1.0	5.9	0.8	5.7	0.9	6.8	0.6
Legislative District 14	5.7	0.6	54.0	1.3	\$123,448	\$2,519	5.6	0.8	8.7	0.9	7.5	0.7	4.5	0.7	8.7	0.6
Legislative District 15	4.3	0.6	66.4	1.2	\$162,728	\$4,207	3.8	0.6	6.8	0.9	5.7	0.6	3.2	0.6	6.1	0.5
Legislative District 16	2.1	0.3	80.8	0.9	\$206,053	\$5,768	3.1	0.4	3.7	0.6	3.4	0.5	0.8	0.2	7.5	0.5
Legislative District 17	9.4	0.9	55.8	1.1	\$113,901	\$3,043	8.4	1.0	12.3	1.1	5.5	0.6	6.4	0.7	7.8	0.6
Legislative District 18	12.5	1.0	56.1	1.3	\$132,869	\$3,234	8.6	1.0	14.7	1.2	6.7	0.8	6.0	0.8	7.4	0.5
Legislative District 19	12.4	1.1	46.8	1.3	\$112,180	\$3,081	7.2	1.1	13.0	1.1	7.0	0.8	6.1	0.9	9.2	0.7
Legislative District 20	14.5	1.1	50.3	1.2	\$95,861	\$2,417	10.2	1.0	18.7	1.0	8.3	0.7	7.1	0.7	7.3	0.5
Legislative District 21	12.9	1.1	39.6	1.5	\$90,305	\$2,354	11.9	1.1	12.3	1.1	8.1	0.8	5.8	0.7	8.5	0.6
Legislative District 22	19.2	1.1	29.0	1.3	\$78,222	\$1,714	11.0	1.2	21.0	1.0	9.0	0.8	10.0	0.9	7.4	0.5
Legislative Subdistrict 23A	6.7	1.3	43.5	2.7	\$107,591	\$4,561	4.4	1.2	9.7	1.6	6.7	1.2	4.7	1.5	8.6	1.2
Legislative Subdistrict 23B	5.1	0.9	44.1	1.6	\$117,203	\$2,606	3.5	0.7	7.7	0.9	7.7	1.2	3.8	0.9	8.0	0.7
Legislative District 24	10.8	0.9	29.1	1.4	\$85,978	\$1,806	9.9	1.1	10.9	0.8	10.7	1.0	11.9	0.9	8.6	0.5
Legislative District 25	8.6	0.9	26.1	1.2	\$86,855	\$1,762	7.5	0.9	10.9	0.9	10.2	0.7	10.0	1.0	9.0	0.7
Legislative District 26	10.4	0.8	27.0	1.4	\$93,961	\$2,197	6.9	1.0	11.7	0.9	12.4	0.9	9.8	1.1	9.1	0.6
Legislative Subdistrict 27A	9.4	1.4	25.9	2.0	\$112,667	\$3,752	4.4	1.2	10.6	1.6	8.5	1.3	6.0	1.2	8.3	1.0
Legislative Subdistrict 27B	5.9	1.0	33.0	2.3	\$123,886	\$4,094	2.7	0.8	5.5	0.9	6.9	1.1	3.3	1.1	7.9	0.9
Legislative Subdistrict 27C	8.7	1.3	28.1	1.9	\$105,618	\$4,322	6.2	1.4	6.9	1.0	7.4	1.1	8.3	1.5	10.5	0.9

* MoE: Margin of Error

2009-2013 American Community Survey Five-Year Estimates for Maryland Legislative Districts (House of Delegates)

	Percent Population Ages 25+ w/ less than High School Degree		Percent Population Ages 25+ w/ Bachelor's Degree or higher		Median Household Income		Percent of Persons Below Poverty Level		Percent Population with No Health Insurance		Percent Unemployed	Percent Receiving SNAP Benefits		Percent with a Disability		
	MoE* +/-		MoE* +/-		MoE* +/-		MoE* +/-		MoE* +/-			MoE* +/-		MoE* +/-		
Legislative District 28	8.5	0.6	27.4	1.1	\$105,175	\$2,267	7.2	0.8	6.6	0.7	7.6	0.8	8.1	0.8	9.3	0.6
Legislative Subdistrict 29A	11.5	1.4	21.4	1.8	\$102,892	\$6,033	4.8	1.2	7.7	1.7	5.9	1.3	6.2	1.5	10.5	1.1
Legislative Subdistrict 29B	10.3	1.7	29.6	2.4	\$87,839	\$4,169	11.1	1.9	8.7	1.8	5.6	1.3	15.5	2.1	11.9	1.4
Legislative Subdistrict 29C	5.6	1.1	36.1	1.9	\$105,849	\$3,895	4.8	1.3	8.6	1.7	6.1	1.2	6.9	1.4	11.0	1.1
Legislative Subdistrict 30A	8.8	1.1	48.7	1.4	\$110,132	\$3,624	7.7	1.3	9.5	1.2	5.3	0.8	5.0	0.8	9.4	0.8
Legislative Subdistrict 30B	8.1	1.3	32.0	2.2	\$119,410	\$5,828	4.3	1.2	5.9	1.0	7.8	1.3	4.9	1.5	9.9	1.1
Legislative Subdistrict 31A	19.0	2.4	14.3	1.7	\$66,322	\$3,065	13.3	2.2	14.3	2.4	11.0	1.7	14.3	1.8	13.1	1.3
Legislative Subdistrict 31B	10.0	1.0	27.8	1.3	\$106,382	\$3,130	5.2	1.0	7.1	0.8	7.5	0.9	4.2	1.0	9.5	0.9
Legislative District 32	11.9	1.0	29.1	1.3	\$88,786	\$2,345	8.1	1.1	9.4	0.9	7.7	0.9	7.7	0.9	9.8	0.7
Legislative District 33	4.3	0.4	51.7	1.0	\$135,552	\$2,830	3.0	0.5	5.0	0.6	5.2	0.6	2.4	0.6	7.8	0.5
Legislative Subdistrict 34A	10.0	0.9	23.8	1.2	\$74,186	\$1,995	12.7	1.7	9.4	1.2	10.2	1.2	13.6	1.2	12.5	0.9
Legislative Subdistrict 34B	5.2	1.0	39.8	2.1	\$100,099	\$3,510	5.0	1.3	4.1	1.0	5.8	1.1	4.7	1.3	8.3	0.9
Legislative Subdistrict 35A	11.8	1.5	23.7	1.9	\$76,726	\$2,986	8.8	1.8	8.7	1.2	9.2	1.6	9.9	1.6	12.9	1.3
Legislative Subdistrict 35B	9.5	0.9	30.0	1.2	\$100,031	\$2,536	7.2	1.2	6.1	0.7	6.8	0.9	6.3	0.9	10.7	0.8
Legislative District 36	12.1	0.9	26.3	0.9	\$86,271	\$2,171	10.6	1.0	9.3	0.7	8.2	0.7	9.8	0.8	12.1	0.7
Legislative Subdistrict 37A	22.3	1.8	14.1	1.6	\$45,679	\$1,752	25.2	2.6	15.5	1.7	16.3	1.8	29.5	2.3	14.4	1.4
Legislative Subdistrict 37B	11.7	1.0	30.1	1.1	\$84,485	\$2,714	9.7	0.9	10.6	1.0	8.6	0.9	10.2	1.0	13.6	0.8
Legislative Subdistrict 38A	18.8	1.6	16.6	1.4	\$56,064	\$2,333	19.3	2.3	13.0	1.6	10.4	1.7	19.6	2.0	15.7	1.2
Legislative Subdistrict 38B	11.0	1.7	30.7	1.9	\$65,562	\$3,513	18.0	2.8	11.6	1.6	9.7	1.7	10.7	2.1	11.6	1.2
Legislative Subdistrict 38C	9.1	1.0	28.7	1.9	\$82,212	\$6,487	8.6	1.6	10.1	1.3	8.9	1.4	6.8	1.4	13.8	1.3
Legislative District 39	9.9	1.1	45.5	1.8	\$102,833	\$2,431	6.8	1.0	14.4	1.2	6.5	0.7	7.8	1.0	6.2	0.5
Legislative District 40	24.2	1.0	23.7	1.1	\$46,669	\$1,500	30.9	1.7	14.0	0.8	17.4	1.3	26.7	1.2	18.1	0.9
Legislative District 41	15.9	1.1	29.0	1.2	\$67,887	\$2,565	19.2	1.7	10.9	0.9	13.4	1.1	17.3	1.5	16.4	1.0
Legislative Subdistrict 42A	4.7	1.1	61.7	1.9	\$97,028	\$5,483	11.6	1.9	6.8	1.4	5.5	1.0	3.9	0.8	8.3	0.9
Legislative Subdistrict 42B	6.0	0.7	50.1	1.2	\$114,681	\$3,586	5.8	0.9	5.2	0.8	5.3	0.7	2.7	0.7	9.0	0.6
Legislative District 43	14.3	1.1	32.9	1.3	\$63,870	\$2,473	19.9	1.4	11.7	0.9	11.4	0.9	19.3	1.1	12.8	0.8
Legislative Subdistrict 44A	24.7	2.2	12.4	1.9	\$42,901	\$2,022	32.3	2.7	13.0	1.5	18.9	2.2	32.8	2.5	16.6	1.4
Legislative Subdistrict 44B	10.2	1.1	33.9	1.6	\$77,719	\$2,091	8.0	1.2	10.6	1.3	8.1	1.0	10.9	1.4	10.4	0.7
Legislative District 45	19.5	1.1	17.9	1.0	\$50,102	\$1,502	21.7	1.5	12.5	0.9	15.3	1.2	23.8	1.5	14.4	0.8
Legislative District 46	23.4	1.2	34.2	1.1	\$73,992	\$2,093	24.3	1.8	16.6	1.0	11.2	0.9	21.1	1.1	14.3	0.8
Legislative Subdistrict 47A	24.7	1.5	18.8	1.0	\$66,282	\$1,979	14.3	1.6	23.0	1.5	11.2	0.9	13.5	1.0	8.1	0.7
Legislative Subdistrict 47B	47.5	3.0	16.3	1.7	\$73,566	\$4,923	17.8	2.2	46.0	2.0	11.0	1.6	10.0	1.7	6.1	0.8

Source: U.S. Census Bureau, 2009-2013 American Community Survey.
Prepared by the Maryland Department of Planning.

* MoE: Margin of Error

Housing Characteristics

From the American Community Survey's
2009 – 2013 Five-Year Estimates

2009-2013 American Community Survey Five-Year Estimates for Maryland Legislative Districts (House of Delegates)

	Total Housing Units	MoE* +/-	Percent Owner Occupied Housing Units	MoE* +/-	Median Home Value	MoE* +/-	Percent of Owners Spending 35% or more of Income on Housing ^	MoE* +/-	Median Gross Rent	MoE* +/-	Percent Renters Spending 35% or more of Income on Rent	MoE* +/-
<i>Jurisdictions</i>												
Legislative Subdistrict 1A	23,757	212	76.0	1.7	\$155,700	\$6,495	23.6	2.7	\$641	\$40	36.9	6.0
Legislative Subdistrict 1B	17,563	368	69.4	1.9	\$129,300	\$6,185	22.5	2.8	\$632	\$40	47.1	5.7
Legislative Subdistrict 1C	18,686	407	70.7	2.1	\$152,000	\$6,449	23.9	3.4	\$678	\$47	39.3	4.7
Legislative Subdistrict 2A	33,932	466	76.4	1.4	\$226,800	\$4,499	26.7	2.2	\$921	\$49	30.8	3.9
Legislative Subdistrict 2B	19,026	469	39.0	1.8	\$154,600	\$4,668	25.3	4.3	\$814	\$23	43.0	3.5
Legislative Subdistrict 3A	32,572	560	59.0	1.7	\$259,500	\$6,315	24.9	2.5	\$1,216	\$30	40.4	3.1
Legislative Subdistrict 3B	15,475	325	76.4	2.4	\$306,100	\$10,506	20.8	2.7	\$1,449	\$71	33.5	6.1
Legislative District 4	47,177	551	86.9	0.9	\$336,900	\$4,470	22.6	1.6	\$1,147	\$74	43.0	4.4
Legislative District 5	48,300	344	82.0	1.0	\$312,700	\$4,944	25.0	1.5	\$999	\$40	38.9	3.4
Legislative District 6	50,369	325	65.2	1.1	\$168,800	\$2,110	27.2	2.0	\$954	\$19	42.9	3.1
Legislative District 7	50,157	493	84.8	1.0	\$315,800	\$5,883	24.4	1.7	\$1,128	\$26	40.3	4.9
Legislative District 8	52,718	258	66.7	1.0	\$226,300	\$2,083	22.9	2.1	\$1,146	\$14	44.4	2.7
Legislative Subdistrict 9A	30,380	373	89.5	1.0	\$525,100	\$10,039	21.5	1.7	\$1,287	\$56	34.5	5.9
Legislative Subdistrict 9B	15,880	336	73.1	1.7	\$512,800	\$12,713	20.1	2.5	\$1,403	\$38	31.0	5.5
Legislative District 10	48,077	609	66.1	1.2	\$244,200	\$3,479	27.4	2.1	\$1,179	\$21	43.5	3.0
Legislative District 11	53,327	420	58.0	1.2	\$330,300	\$6,743	26.2	1.9	\$1,207	\$19	32.9	3.3
Legislative District 12	49,592	511	62.2	1.3	\$308,200	\$7,749	23.3	2.3	\$1,363	\$39	42.9	3.4
Legislative District 13	46,474	348	72.5	1.2	\$363,900	\$4,003	20.7	1.5	\$1,471	\$49	38.4	3.7
Legislative District 14	45,603	349	78.4	1.1	\$438,500	\$5,485	26.1	1.6	\$1,613	\$56	52.6	4.3
Legislative District 15	43,133	385	82.9	1.2	\$573,400	\$8,448	25.0	1.7	\$1,746	\$59	38.8	4.2
Legislative District 16	53,942	417	69.0	1.0	\$790,700	\$11,150	21.2	1.6	\$1,902	\$37	31.0	2.3
Legislative District 17	52,221	794	56.5	1.2	\$406,500	\$8,782	25.8	1.8	\$1,588	\$34	38.2	2.4
Legislative District 18	45,952	407	65.9	1.1	\$427,700	\$8,190	25.8	1.7	\$1,609	\$40	38.9	2.9
Legislative District 19	45,368	386	73.1	1.3	\$386,200	\$6,110	27.1	1.8	\$1,482	\$35	47.1	3.6
Legislative District 20	48,506	441	45.5	1.2	\$417,900	\$6,294	25.7	2.0	\$1,386	\$21	41.2	2.3
Legislative District 21	44,952	679	59.3	1.3	\$287,900	\$4,722	30.0	2.0	\$1,376	\$31	44.0	2.9
Legislative District 22	47,202	769	53.0	1.4	\$242,900	\$4,280	36.3	2.2	\$1,247	\$19	40.2	2.6
Legislative Subdistrict 23A	14,404	265	68.9	2.0	\$330,100	\$6,276	31.4	3.8	\$1,320	\$33	31.7	5.3
Legislative Subdistrict 23B	30,520	513	82.6	1.6	\$307,800	\$6,557	29.8	2.0	\$1,708	\$71	40.1	5.6
Legislative District 24	47,871	563	61.5	1.3	\$260,200	\$4,672	36.2	2.3	\$1,240	\$27	42.3	2.7
Legislative District 25	45,859	546	66.1	1.3	\$249,600	\$4,246	30.6	2.1	\$1,254	\$33	43.4	2.9
Legislative District 26	47,239	318	69.5	1.4	\$272,700	\$4,549	32.9	1.9	\$1,207	\$22	37.4	3.6
Legislative Subdistrict 27A	15,845	364	86.1	2.1	\$297,000	\$7,029	28.6	3.3	\$1,506	\$121	34.6	10.0
Legislative Subdistrict 27B	14,639	278	91.9	1.5	\$391,100	\$8,580	27.6	2.6	\$1,453	\$95	47.4	10.3
Legislative Subdistrict 27C	16,720	277	77.6	2.0	\$348,700	\$7,210	25.2	2.7	\$1,376	\$73	50.0	7.3

* MoE: Margin of Error

^ Homeowners with a mortgage

2009-2013 American Community Survey Five-Year Estimates for Maryland Legislative Districts (House of Delegates)

	Total Housing Units	Percent Owner Occupied		Median Home Value	Percent of Owners Spending 35% or more of Income on Housing ^		Median Gross Rent	Percent Renters Spending 35% or more of Income on Rent				
		MoE* +/-	MoE* +/-		MoE* +/-	MoE* +/-		MoE* +/-	MoE* +/-			
Legislative District 28	48,982	317	79.6	1.1	\$295,400	\$4,434	25.2	1.6	\$1,459	\$55	47.9	4.7
Legislative Subdistrict 29A	15,863	340	84.4	2.0	\$313,200	\$8,863	21.1	3.1	\$1,136	\$145	36.9	7.6
Legislative Subdistrict 29B	17,509	321	57.9	2.6	\$276,900	\$11,415	21.0	3.5	\$1,239	\$51	36.5	5.1
Legislative Subdistrict 29C	17,473	402	79.1	2.5	\$298,600	\$9,382	22.8	3.4	\$1,557	\$114	39.0	5.9
Legislative Subdistrict 30A	36,941	627	63.8	1.7	\$391,300	\$7,997	30.4	2.6	\$1,494	\$57	37.2	3.5
Legislative Subdistrict 30B	17,041	275	87.2	1.8	\$386,400	\$11,899	28.5	3.3	\$1,636	\$249	37.2	9.6
Legislative Subdistrict 31A	17,736	253	64.6	2.4	\$218,400	\$4,605	33.5	3.2	\$1,160	\$52	40.4	5.3
Legislative Subdistrict 31B	31,918	345	88.0	1.4	\$311,200	\$7,119	25.0	2.2	\$1,444	\$168	46.4	7.2
Legislative District 32	51,576	619	59.8	1.4	\$284,800	\$4,419	24.1	2.4	\$1,415	\$33	42.8	3.1
Legislative District 33	48,368	483	87.5	1.1	\$429,900	\$7,444	21.7	1.6	\$1,682	\$59	35.4	4.9
Legislative Subdistrict 34A	32,897	396	67.0	2.0	\$224,600	\$4,631	27.4	2.6	\$1,069	\$37	42.7	4.3
Legislative Subdistrict 34B	17,213	309	83.2	1.7	\$270,800	\$4,277	21.2	2.9	\$1,161	\$52	40.2	7.8
Legislative Subdistrict 35A	17,355	408	71.7	2.2	\$248,000	\$7,739	26.5	3.0	\$967	\$49	42.7	5.7
Legislative Subdistrict 35B	31,470	484	85.4	1.4	\$298,700	\$5,760	22.6	1.8	\$1,132	\$43	42.3	6.8
Legislative District 36	56,034	407	77.0	1.2	\$287,300	\$5,185	28.3	1.7	\$984	\$31	42.2	3.9
Legislative Subdistrict 37A	18,853	574	43.8	2.1	\$150,600	\$7,014	33.3	4.2	\$853	\$30	49.4	3.5
Legislative Subdistrict 37B	41,529	419	77.0	1.4	\$263,000	\$5,519	28.0	2.1	\$965	\$46	46.7	4.2
Legislative Subdistrict 38A	19,489	748	68.3	2.1	\$167,100	\$5,742	35.6	3.3	\$759	\$50	50.6	5.6
Legislative Subdistrict 38B	16,955	438	62.1	2.6	\$171,600	\$5,543	30.1	4.3	\$1,090	\$32	44.9	5.3
Legislative Subdistrict 38C	51,196	367	83.0	2.1	\$258,400	\$7,415	31.5	3.1	\$1,062	\$93	49.6	7.4
Legislative District 39	43,099	312	70.4	1.4	\$301,700	\$7,608	28.1	2.4	\$1,551	\$45	41.5	3.9
Legislative District 40	60,927	707	37.9	1.3	\$126,900	\$5,965	29.5	2.4	\$897	\$23	49.5	2.1
Legislative District 41	52,137	510	54.3	1.6	\$167,100	\$3,901	34.3	2.7	\$962	\$18	45.2	3.2
Legislative Subdistrict 42A	16,955	264	56.7	2.0	\$314,000	\$9,514	19.1	2.6	\$1,228	\$33	46.8	4.6
Legislative Subdistrict 42B	32,995	401	79.8	1.1	\$365,000	\$5,905	22.4	1.7	\$1,214	\$27	46.3	4.4
Legislative District 43	52,736	471	52.2	1.3	\$163,100	\$3,386	27.9	2.2	\$922	\$20	49.1	2.6
Legislative Subdistrict 44A	20,606	427	44.2	2.3	\$109,700	\$6,372	31.0	4.4	\$887	\$27	52.4	4.0
Legislative Subdistrict 44B	32,691	428	66.5	1.5	\$232,700	\$3,779	25.7	2.3	\$1,094	\$37	37.4	3.8
Legislative District 45	55,214	561	52.8	1.4	\$142,700	\$4,526	31.6	2.8	\$877	\$19	53.7	3.0
Legislative District 46	54,636	642	46.0	1.2	\$215,500	\$5,434	25.7	2.1	\$977	\$25	38.2	2.2
Legislative Subdistrict 47A	32,555	516	43.6	1.6	\$231,500	\$4,477	40.7	2.9	\$1,121	\$13	42.0	2.9
Legislative Subdistrict 47B	12,898	234	39.3	2.2	\$214,200	\$9,111	41.2	3.9	\$1,237	\$25	42.1	3.9

Source: U.S. Census Bureau, 2009-2013 American Community Survey.
 Prepared by the Maryland Department of Planning.

* MoE: Margin of Error
 ^ Homeowners with a mortgage

Journey to Work Characteristics

From the American Community Survey's
2009 – 2013 Five-Year Estimates

2009-2013 American Community Survey Five-Year Estimates for Maryland Legislative Districts (House of Delegates)

	Mean Travel Time to Work (Min.)	MoE* +/-	Percent Workers Commuting 60 min. or longer	MoE* +/-	Percent Commuting on Public Transit	MoE* +/-	Percent Commuting by Carpool	MoE* +/-	Percent Workers Who Work At Home	MoE* +/-	Percent of Households With no Vehicle	MoE* +/-
<i>Jurisdictions</i>												
Legislative Subdistrict 1A	24.3	1.2	6.5	1.4	0.4	0.4	13.0	1.7	5.4	1.3	3.5	1.1
Legislative Subdistrict 1B	20.4	1.2	6.5	1.2	0.7	0.5	9.7	1.7	3.0	0.9	2.8	0.9
Legislative Subdistrict 1C	23.4	1.0	7.2	1.2	0.7	0.3	10.8	1.5	3.6	1.0	2.5	0.8
Legislative Subdistrict 2A	30.3	0.9	14.8	1.3	0.9	0.3	9.0	0.9	4.8	0.7	1.6	0.5
Legislative Subdistrict 2B	23.6	1.2	9.4	1.3	2.1	0.8	13.5	2.1	3.0	0.8	6.6	1.3
Legislative Subdistrict 3A	32.4	1.1	20.0	1.5	3.8	0.8	13.8	1.5	5.4	1.0	4.3	0.8
Legislative Subdistrict 3B	35.3	1.4	22.7	2.1	3.0	0.7	11.8	1.6	5.7	1.2	0.7	0.4
Legislative District 4	36.0	0.8	20.6	1.1	1.7	0.3	9.4	0.8	6.6	0.8	1.2	0.3
Legislative District 5	34.4	0.7	18.2	0.9	1.0	0.3	9.1	0.8	4.8	0.5	1.3	0.4
Legislative District 6	27.5	0.8	8.0	0.9	4.1	0.7	13.0	1.0	1.4	0.3	5.4	0.8
Legislative District 7	34.0	0.7	13.8	0.9	1.5	0.4	8.5	0.9	4.2	0.5	1.7	0.5
Legislative District 8	28.1	0.5	7.0	0.6	3.2	0.5	10.3	1.1	2.2	0.4	3.2	0.8
Legislative Subdistrict 9A	34.3	0.7	13.7	1.1	1.7	0.4	7.5	1.1	7.7	1.3	1.1	0.5
Legislative Subdistrict 9B	28.8	1.0	9.6	1.3	2.5	0.6	8.1	1.3	5.5	1.0	2.0	1.1
Legislative District 10	32.8	0.8	12.2	1.2	8.2	1.1	9.4	1.1	3.4	0.5	3.4	0.7
Legislative District 11	27.2	0.7	7.6	0.8	4.8	0.8	9.1	1.3	4.7	0.7	2.4	0.7
Legislative District 12	27.9	0.7	10.3	1.0	4.5	0.6	8.3	0.9	4.3	0.6	3.0	0.7
Legislative District 13	30.1	0.6	13.0	0.9	4.7	0.7	8.6	0.9	4.6	0.6	1.4	0.5
Legislative District 14	37.4	0.8	19.1	1.4	7.9	0.7	9.1	1.0	5.8	0.6	1.8	0.5
Legislative District 15	35.1	0.7	18.4	1.1	8.2	0.8	9.2	1.1	7.3	0.7	0.9	0.3
Legislative District 16	29.7	0.5	7.9	0.7	16.1	1.0	6.5	0.7	10.0	0.8	4.0	0.6
Legislative District 17	31.1	0.6	15.4	1.1	15.6	1.1	9.9	0.9	4.8	0.6	4.1	0.7
Legislative District 18	32.8	0.6	13.2	1.1	22.0	1.3	10.8	0.9	5.2	0.5	4.7	0.9
Legislative District 19	35.6	0.7	17.8	1.3	15.0	1.1	11.4	1.1	4.4	0.5	2.8	0.8
Legislative District 20	35.7	0.8	15.6	1.2	25.5	1.4	10.3	1.2	4.6	0.4	9.4	1.3
Legislative District 21	31.9	0.7	15.0	1.2	9.0	0.9	11.4	1.2	3.5	0.5	3.9	0.8
Legislative District 22	33.3	0.6	15.6	1.1	19.3	1.2	13.6	1.1	1.7	0.3	7.5	0.9
Legislative Subdistrict 23A	34.6	1.4	18.6	2.3	10.1	1.7	12.0	1.8	3.7	1.0	2.8	1.6
Legislative Subdistrict 23B	37.5	0.8	21.9	1.4	10.4	1.1	10.7	1.1	3.4	0.6	1.1	0.6
Legislative District 24	35.6	0.7	16.8	1.3	21.9	1.3	10.1	0.9	2.4	0.6	6.6	1.0
Legislative District 25	36.4	0.7	18.7	1.2	19.4	1.3	9.6	1.0	2.4	0.5	5.8	0.9
Legislative District 26	38.6	0.7	22.8	1.2	18.0	1.3	10.4	1.2	2.7	0.5	5.3	0.8
Legislative Subdistrict 27A	41.4	1.3	25.8	2.5	9.7	1.6	10.0	1.7	3.2	1.0	1.4	0.7
Legislative Subdistrict 27B	39.4	1.0	25.2	2.1	6.2	1.1	9.7	1.5	4.6	1.0	1.0	0.6
Legislative Subdistrict 27C	40.6	1.4	28.7	2.2	3.3	0.9	10.9	1.4	4.1	1.0	1.5	0.6

* MoE: Margin of Error

2009-2013 American Community Survey Five-Year Estimates for Maryland Legislative Districts (House of Delegates)

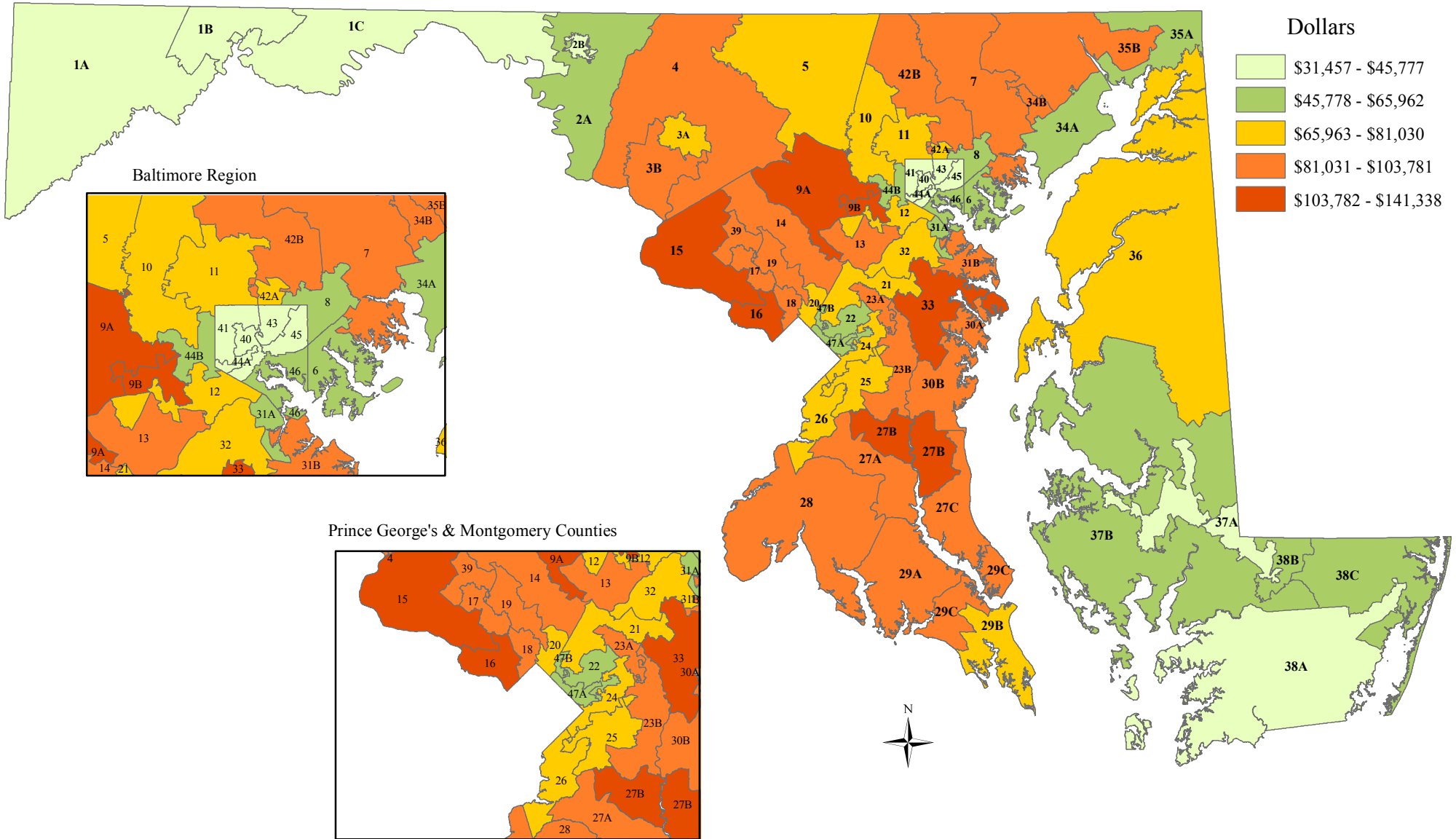
	Mean Travel Time to Work (Min.)	MoE* +/-	Percent Workers Commuting 60 min. or longer	MoE* +/-	Percent Commuting on Public Transit	MoE* +/-	Percent Commuting by Carpool	MoE* +/-	Percent Workers Who Work At Home	MoE* +/-	Percent of Households With no Vehicle	MoE* +/-
Legislative District 28	43.0	0.9	30.4	1.5	6.5	0.7	10.6	1.2	2.8	0.5	1.6	0.4
Legislative Subdistrict 29A	37.7	1.4	23.1	2.1	2.8	0.7	8.7	1.5	3.8	1.0	2.1	0.8
Legislative Subdistrict 29B	22.9	1.1	8.0	1.5	2.1	0.8	7.2	1.6	1.7	0.7	3.4	1.4
Legislative Subdistrict 29C	31.3	1.6	15.4	2.1	1.7	0.8	8.5	1.8	3.0	0.9	1.9	1.0
Legislative Subdistrict 30A	27.7	1.2	12.2	1.2	4.5	0.9	9.3	1.3	9.0	1.2	3.6	0.9
Legislative Subdistrict 30B	37.8	1.4	19.5	2.3	2.5	0.7	9.5	1.8	4.3	1.1	1.0	0.6
Legislative Subdistrict 31A	26.6	0.9	7.3	1.3	2.8	0.7	12.4	2.2	1.2	0.6	3.4	1.1
Legislative Subdistrict 31B	29.2	0.8	9.0	1.0	0.7	0.3	7.8	1.0	3.5	0.7	1.1	0.5
Legislative District 32	28.1	0.8	11.5	1.2	5.1	0.8	9.6	1.1	2.6	0.5	2.3	0.5
Legislative District 33	31.2	0.6	13.4	1.1	2.8	0.5	6.3	0.7	5.5	0.6	0.8	0.3
Legislative Subdistrict 34A	28.9	0.9	11.8	1.1	2.6	0.7	11.0	1.2	3.2	0.8	2.7	0.8
Legislative Subdistrict 34B	31.8	1.1	13.8	1.7	1.5	0.4	8.0	1.5	3.7	0.9	0.9	0.6
Legislative Subdistrict 35A	27.0	1.0	8.3	1.2	1.3	0.5	8.1	1.5	3.5	0.9	1.7	0.8
Legislative Subdistrict 35B	32.0	0.8	14.9	1.1	1.0	0.3	8.7	1.1	4.1	0.7	1.3	0.5
Legislative District 36	32.1	0.9	16.2	1.1	1.3	0.3	9.8	1.0	6.6	0.8	1.7	0.5
Legislative Subdistrict 37A	22.9	1.4	6.7	1.5	1.7	0.8	10.8	2.2	1.6	0.5	7.6	1.6
Legislative Subdistrict 37B	25.5	1.1	9.7	1.1	0.3	0.2	9.6	1.1	5.6	0.6	1.7	0.6
Legislative Subdistrict 38A	22.8	1.2	4.5	1.1	1.8	0.9	8.5	1.4	3.6	1.0	3.9	1.2
Legislative Subdistrict 38B	20.4	1.3	6.0	1.5	0.4	0.3	10.7	1.9	2.4	0.8	1.3	0.7
Legislative Subdistrict 38C	21.8	1.3	4.4	1.1	1.3	0.8	7.6	1.6	7.5	1.6	1.5	0.6
Legislative District 39	36.4	0.7	21.0	1.2	12.3	1.1	12.1	1.2	2.9	0.5	3.4	0.8
Legislative District 40	30.6	1.0	15.3	1.2	23.2	1.7	9.9	0.9	2.7	0.6	22.3	1.8
Legislative District 41	30.4	1.0	12.9	1.3	16.3	1.6	10.3	1.1	3.6	0.6	11.3	1.5
Legislative Subdistrict 42A	26.6	1.3	7.5	1.4	4.4	1.1	7.2	1.6	6.2	1.1	5.6	2.4
Legislative Subdistrict 42B	28.5	0.7	7.9	0.9	1.3	0.4	8.5	0.9	6.1	0.8	1.0	0.4
Legislative District 43	29.4	0.8	11.2	1.1	15.9	1.4	9.3	0.9	3.6	0.6	13.6	1.4
Legislative Subdistrict 44A	33.5	1.8	17.1	2.2	27.4	2.7	10.1	2.0	1.8	0.8	26.6	3.3
Legislative Subdistrict 44B	28.5	0.8	9.0	1.0	6.5	0.8	8.2	1.3	2.5	0.5	3.3	0.9
Legislative District 45	31.1	0.8	12.4	1.1	18.9	1.5	9.7	1.2	1.6	0.4	17.8	1.6
Legislative District 46	28.4	0.8	10.7	1.0	13.6	1.3	11.0	1.1	2.6	0.4	13.6	1.3
Legislative Subdistrict 47A	34.7	0.8	17.5	1.5	27.0	1.7	12.3	1.3	1.9	0.4	11.0	1.3
Legislative Subdistrict 47B	37.5	1.4	22.7	2.3	21.1	2.2	32.6	2.8	1.0	0.5	16.3	2.4

Source: U.S. Census Bureau, 2009-2013 American Community Survey.
Prepared by the Maryland Department of Planning.

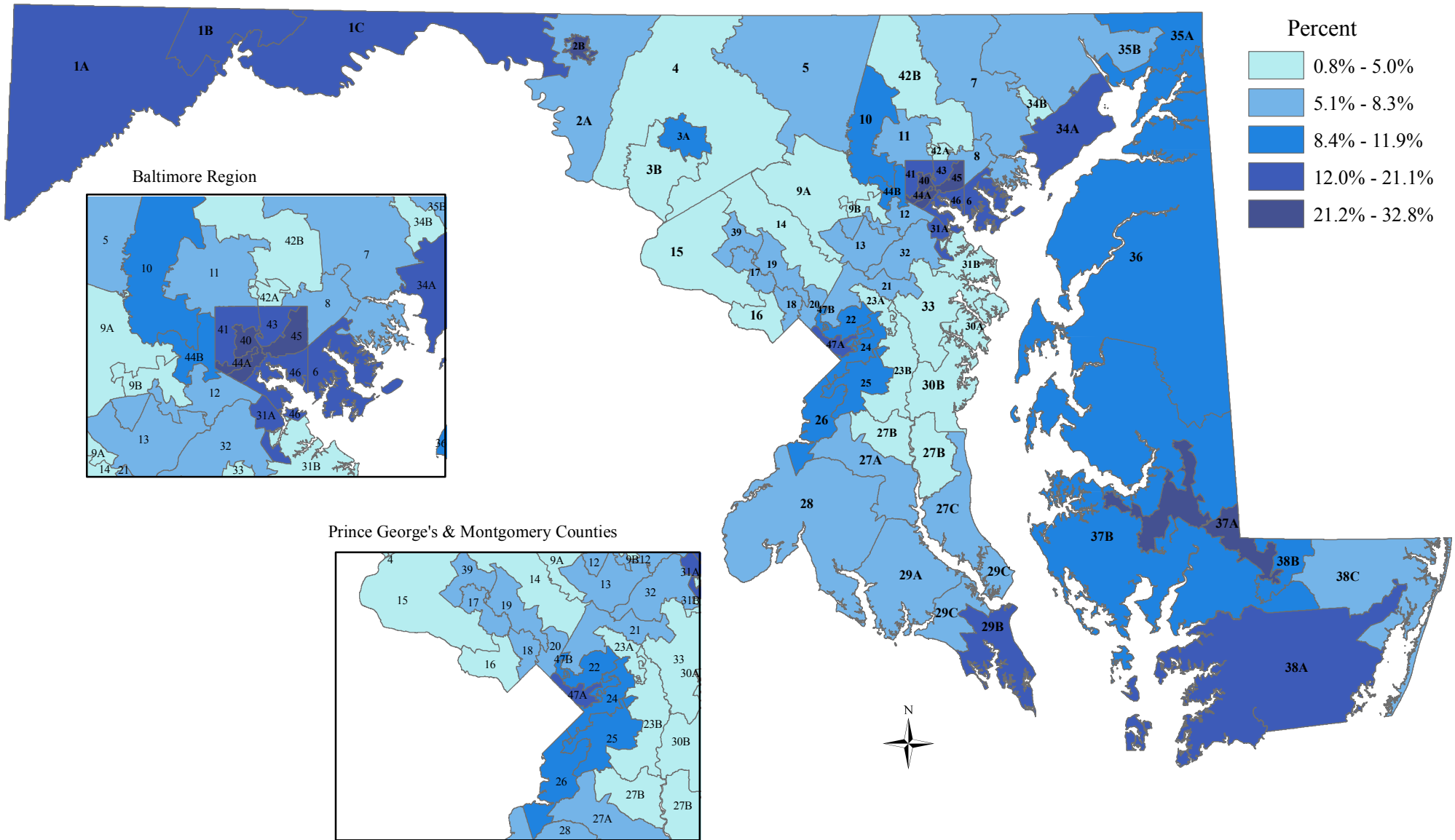
Maps

From the American Community Survey's
2009 – 2013 Five-Year Estimates

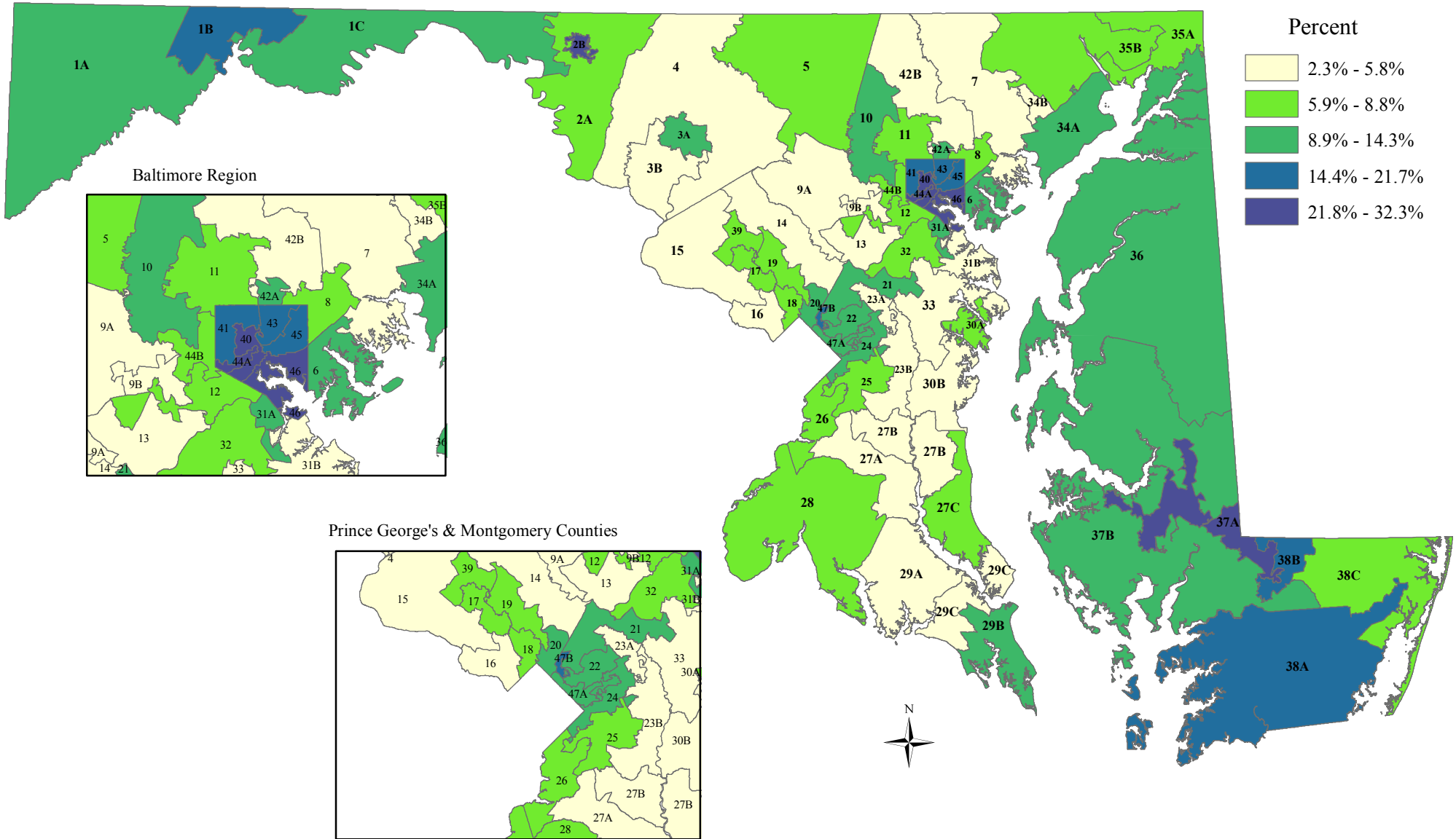
Median Household Income by Legislative District, 2009 to 2013



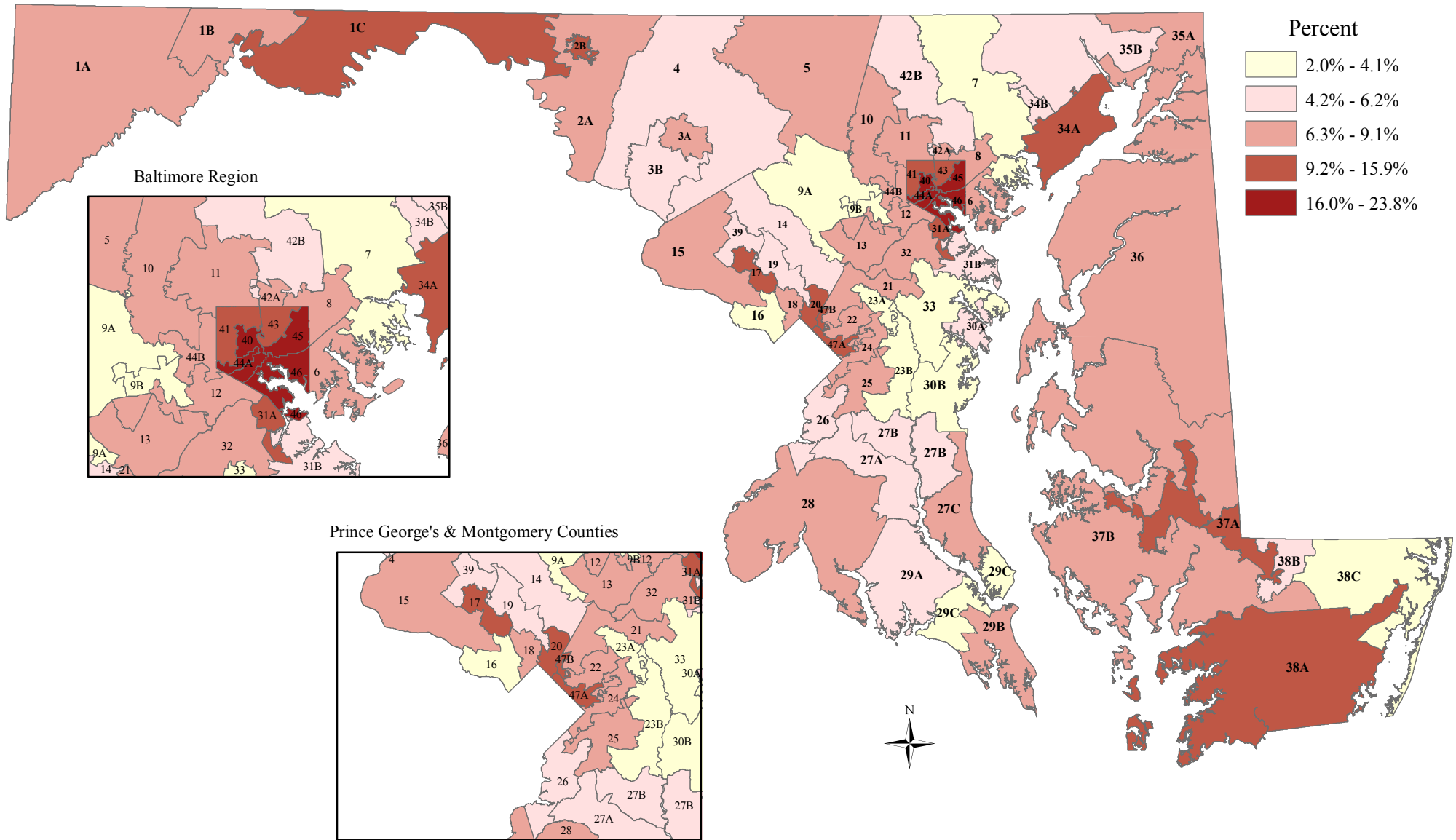
Percent of Households Receiving Food Stamps/SNAP Benefits by Legislative District, 2009 to 2013



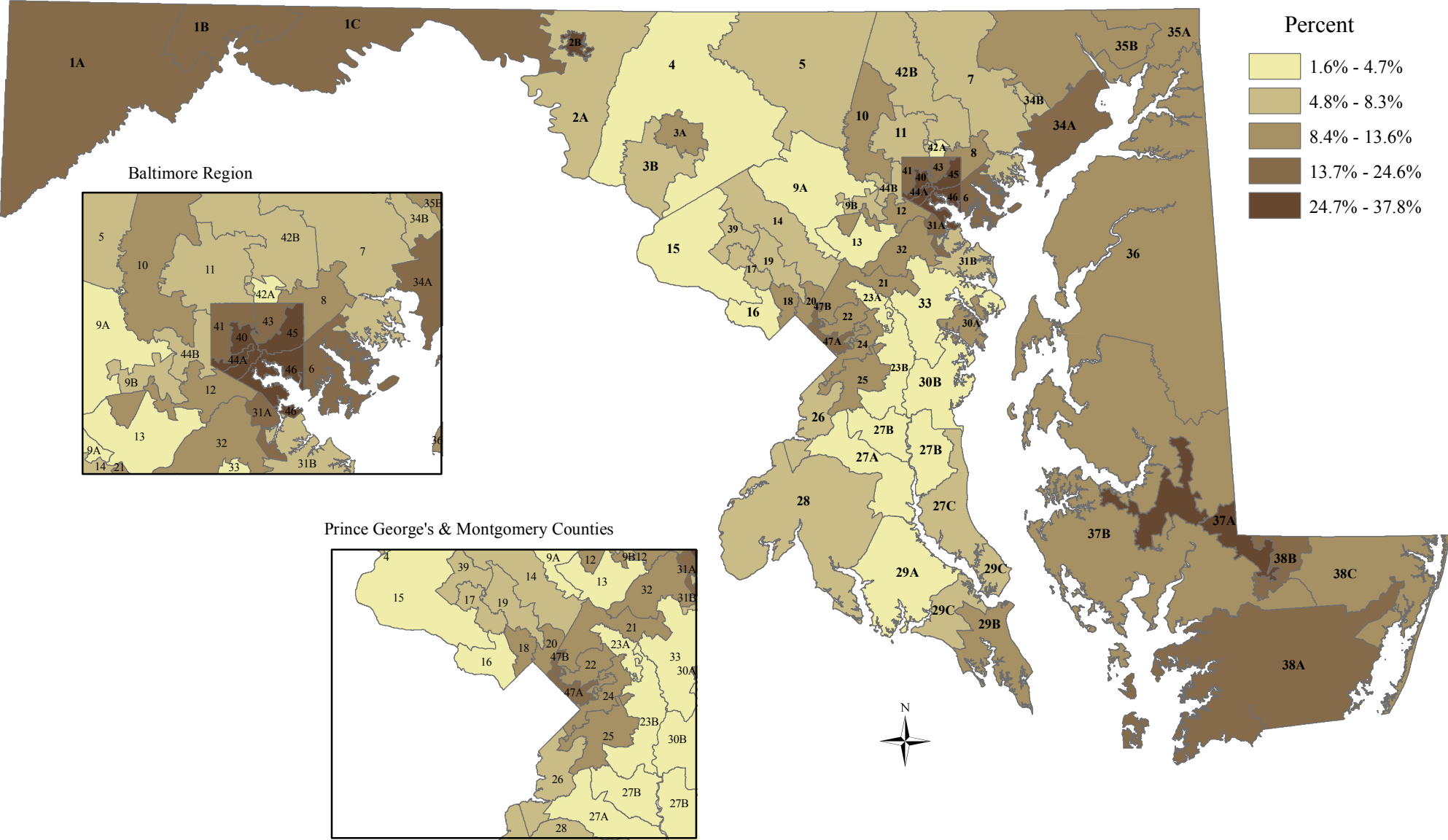
Percent of People in Poverty by Legislative District, 2009 to 2013



Percent of Population Ages 65+ in Poverty by Legislative District, 2009 to 2013

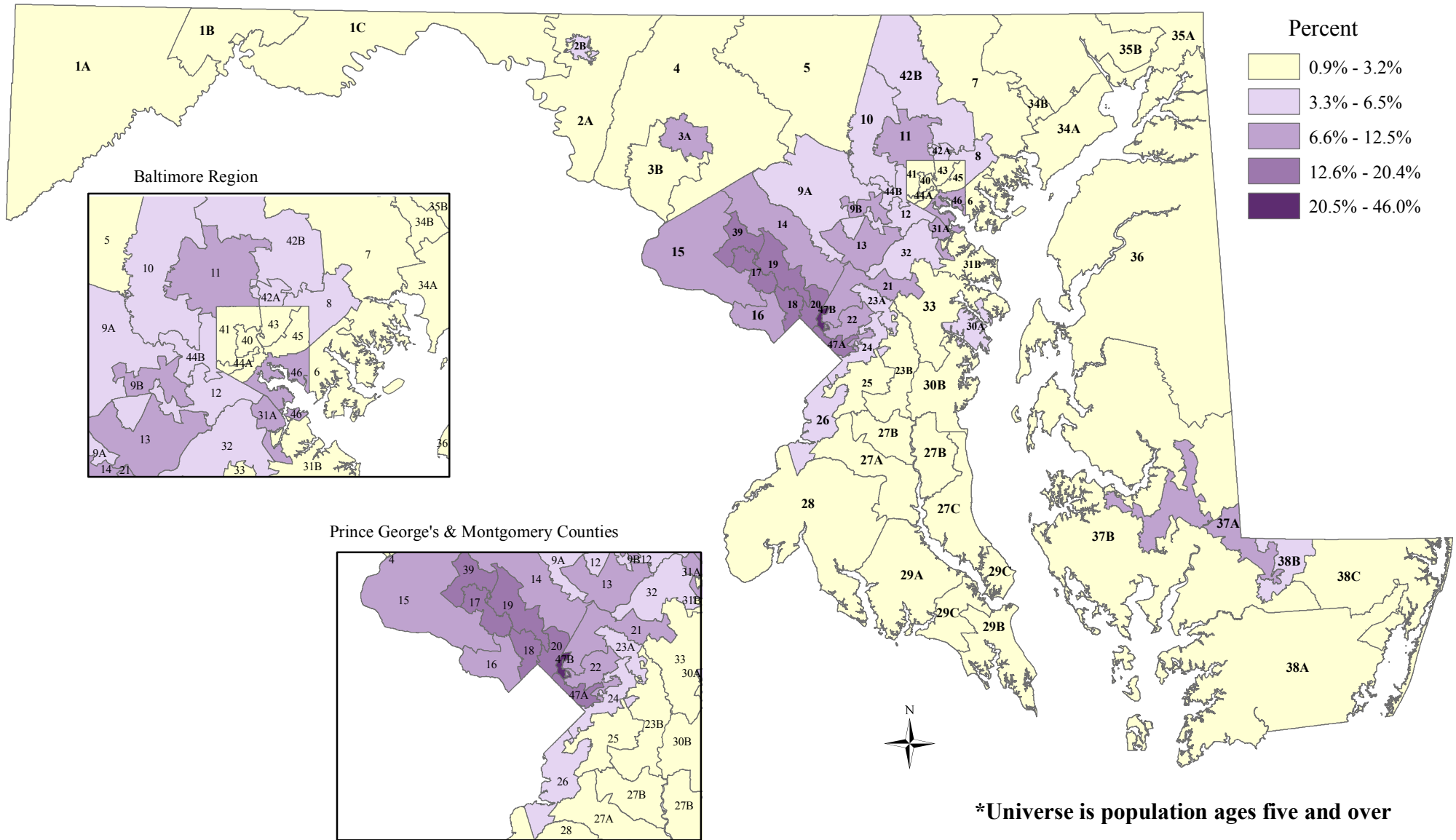


Percent of Families with Related Children Less Than 18 Years Old in Poverty by Legislative District, 2009 to 2013

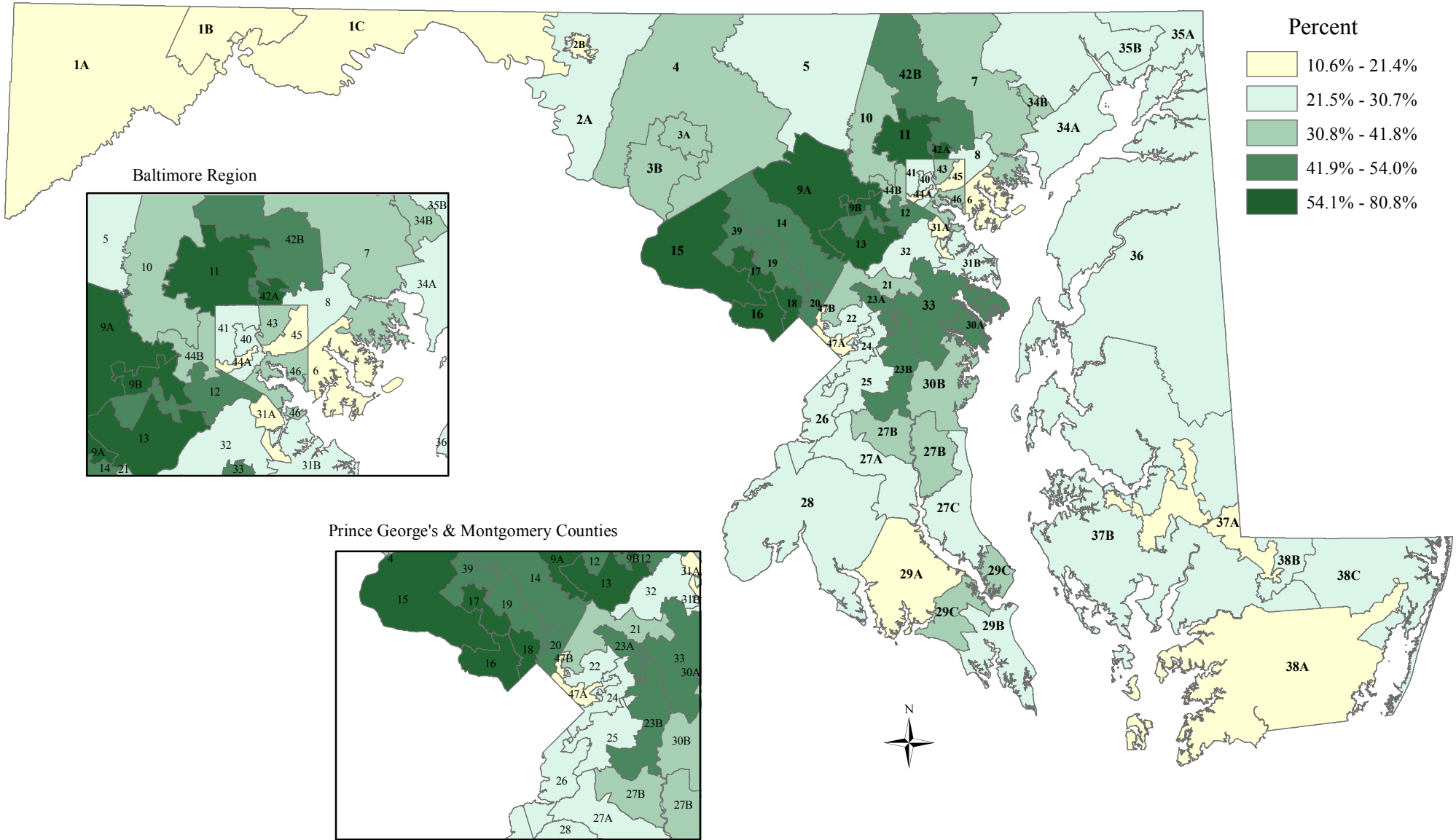


Map prepared by the Maryland Department of Planning, Planning Data & Analysis
 Source: U.S. Census Bureau, ACS 2009 -2013, December 2014

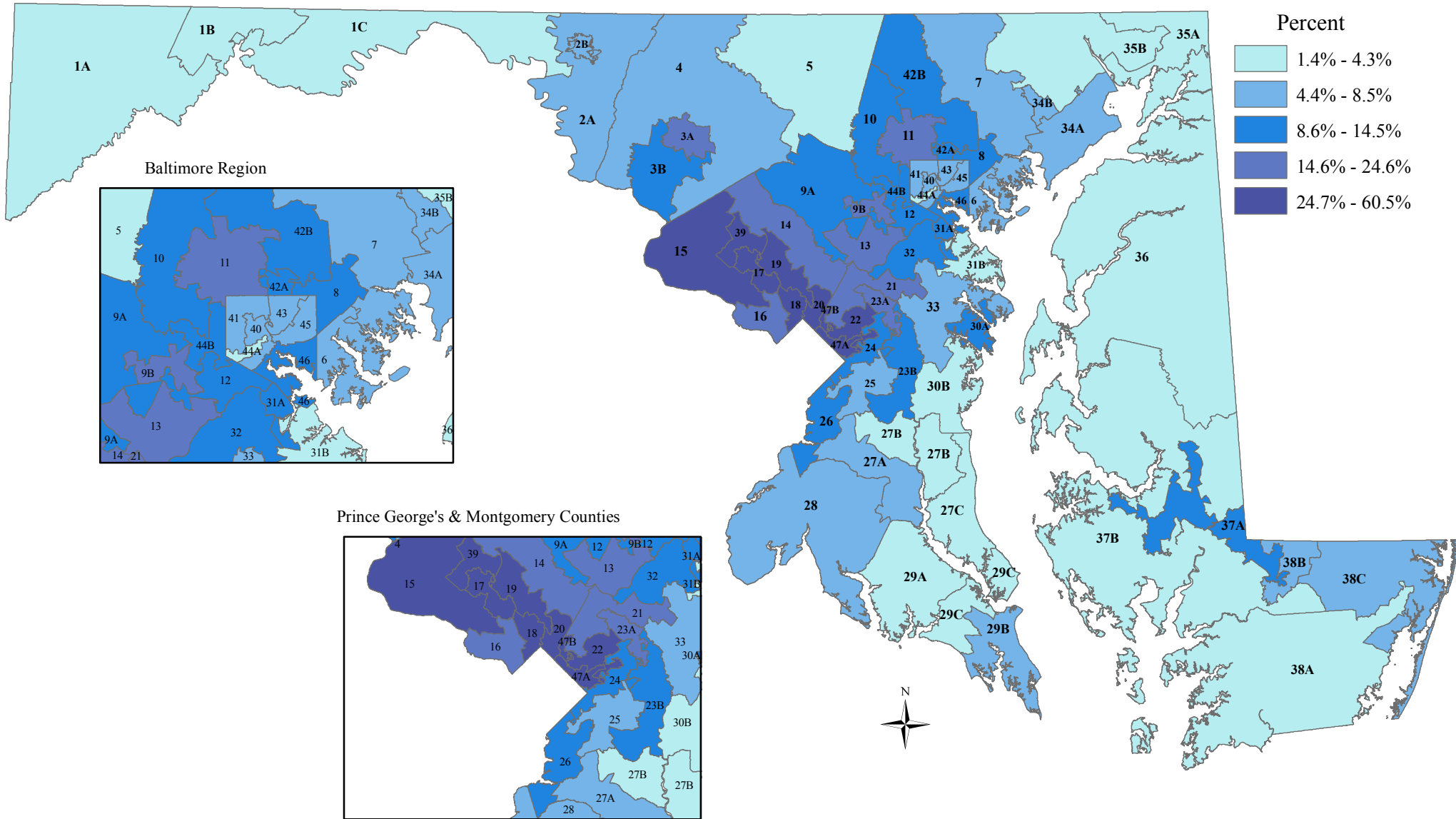
Percent of Population Who Speak English Less Than Very Well by Legislative District, 2009 to 2013*



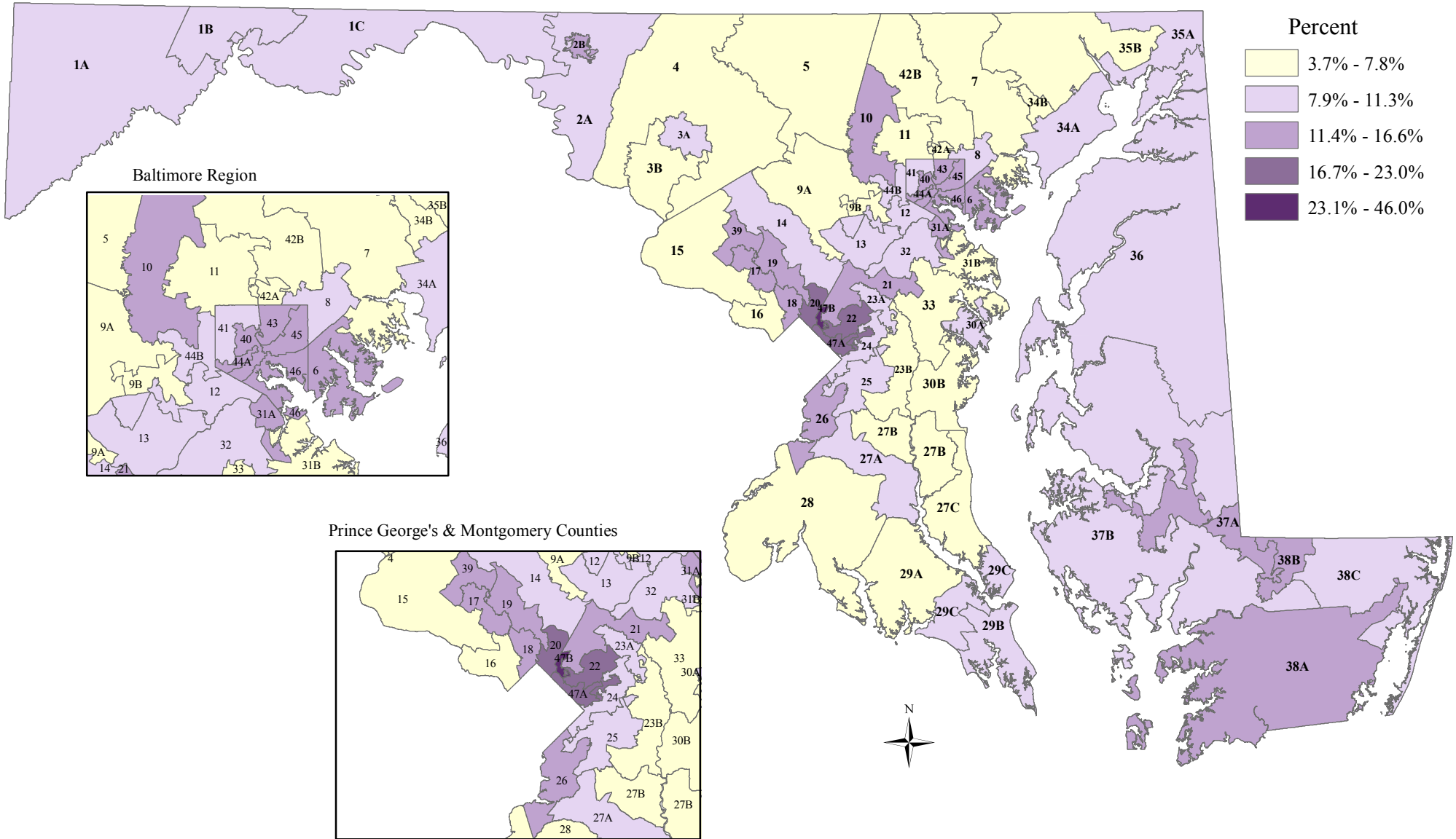
Percent of the Population Ages 25+ With a Bachelor's Degree or Higher by Legislative District, 2009 to 2013



Percent Foreign Born by Legislative District, 2009 to 2013



Percent of Population without Health Insurance by Legislative District, 2009 to 2013



Unemployment Rate by Legislative District, 2009 to 2013

