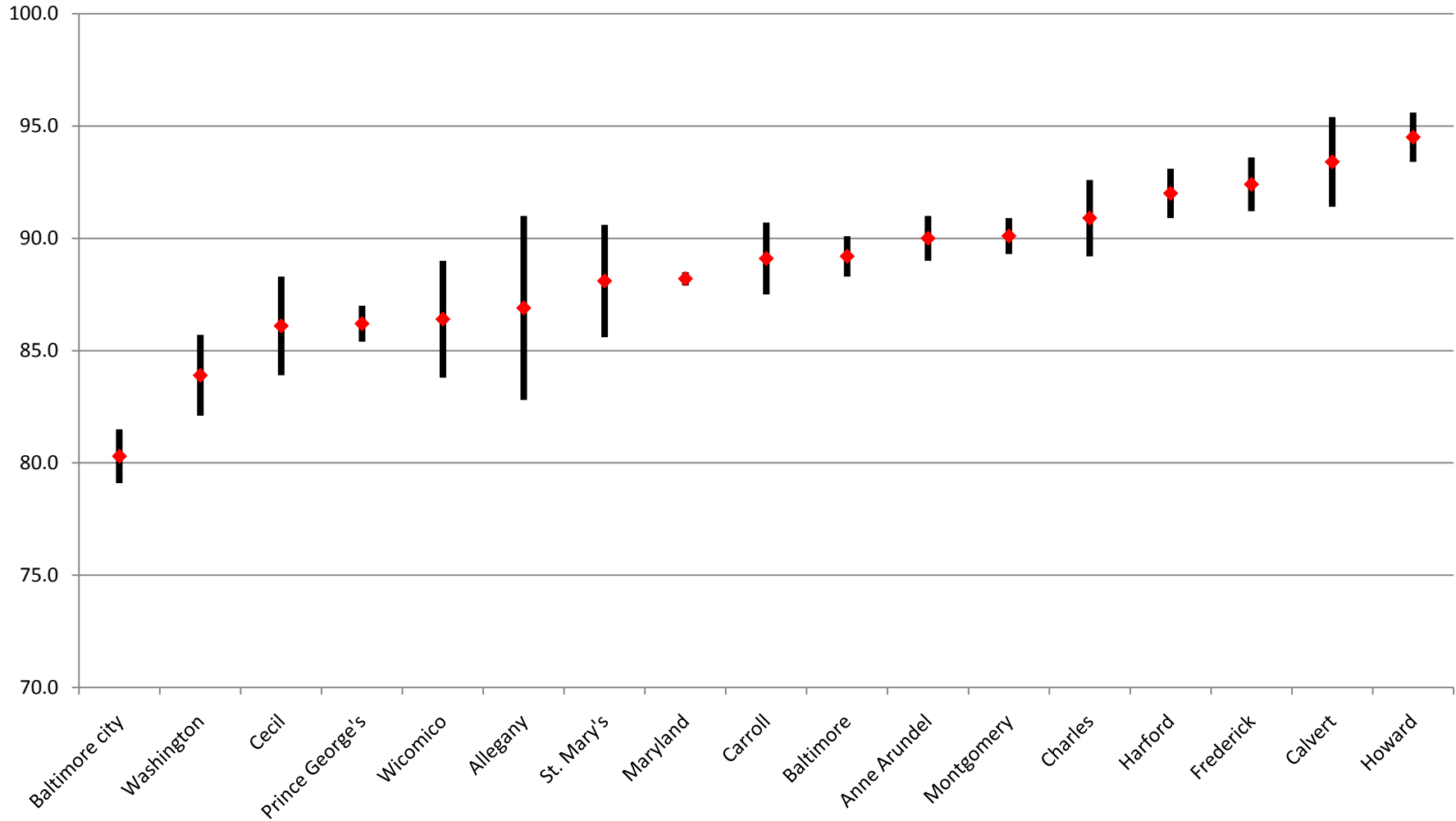


Percent of People 25 Years and Over Who Have Completed High School in Maryland and its Jurisdictions, 2009 (Includes Equivalency) (Table GCT1501) *



* Apparent differences may not be statistically significant at the 90 percent confidence interval.

Prepared by the Maryland Department of Planning, from the 2009 ACS for the 16 counties covered (population of 65,000 or more), September 2010