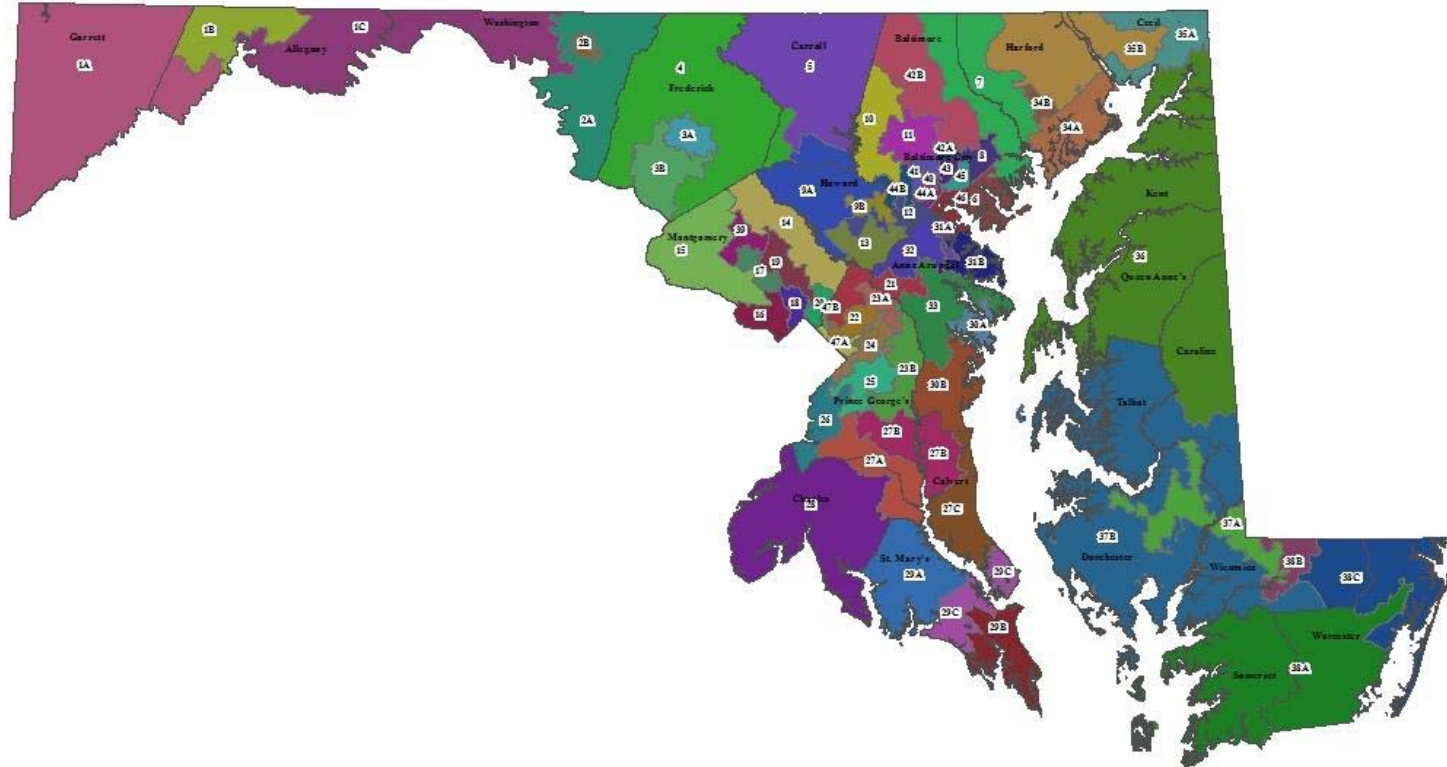


Demographic, Socioeconomic, Housing and Journey to Work Data for Maryland's House of Delegates Legislative Districts

American Community Survey 2010 – 2014 Five-Year Estimates



Lawrence J. Hogan, *Governor*

David R. Craig, *Secretary*

Boyd K. Rutherford, *Lt. Governor*

Maryland Department of Planning

Wendi W. Peters, *Deputy Secretary*

Description of the Data

What is the American Community Survey (ACS)? What are Five-Year Estimates?

The American Community Survey (ACS) is a nationwide survey designed to collect demographic, social, economic, and housing data every year. The U.S. Census Bureau releases data from the ACS in the form of both single-year and multiyear estimates. Unlike previous Census Bureau data products, the ACS is not concerned with creating population counts, but with collecting data on population characteristics. In the past, population characteristics were collected every ten years through the “long form” of the decennial Census, which was sent to a sample of the total population (approximately one in six households in 2000). The ACS replaces this form with a program that initially sampled 250,000 unique housing unit addresses per month, or 3 million per year. The sampling rate has since been increased with the 2014 ACS sampling 3.54 million unique address. But even after five years of accumulated sampling, the ACS will still have a smaller sample size than the decennial Census, which makes it important to pay attention to margins of error associated with these estimates (see “What is a Margin of Error” below).

This rolling sample allows population characteristics for large areas (those over 65,000 in population) to be reported yearly, instead of once every ten years under the previous “long form” system. Characteristics for areas containing less than 65,000 persons, are reported as five-year period estimates. These differences from the decennial Census mean that ACS data is more timely, but cannot be used to pinpoint a particular point in time (unlike the decennial Census, which is for April 1st of the census year). For more information on the ACS, how the data is collected, and how it should be used, please refer to *A Compass for Understanding and Using American Community Survey Data: What General Data Users Need to Know* (October 2008), available online from the U.S. Census Bureau at: <http://www.census.gov/programs-surveys/acs/guidance/handbooks.html>

What is a Margin of Error (MoE)?

Because the ACS is a sample of a population, its results are subject to sampling error. This error also existed in the previous “long form” but due to the larger sample size it was generally not reported by the Census Bureau. Because of the methodology and the smaller sample sizes used to create the ACS, the reported data may have larger errors than experienced data users are used to seeing. The Census Bureau now reports a margin of error (MoE) based on a 90 percent confidence level that allows data users to understand just how accurate the data is and how it should be used. Generally, five-year period estimates will have a smaller MoE than one-year estimates. Estimates with too few sample cases to create a reliable estimate are marked with the letter “N” in the tables. For more information on this subject, please refer to *American Community Survey Accuracy of the Data (5-year 2010-2014)*, available online from the U.S. Census Bureau at http://www2.census.gov/programs-surveys/acs/tech_docs/accuracy/ACS_Accuracy_of_Data_2014.pdf

On February 24, 2012, Maryland's Legislative Districts, based on Census 2010 redistricting, took effect. The data in this handbook are for these district boundaries. These districts are displayed in the following map. <http://www.mdp.state.md.us/PDF/Redistricting/2010maps/Leg/Statewide.pdf>

Additional data for legislative districts in a profile format can be on the Maryland Department of Planning's State Data Center web site at http://planning.maryland.gov/MSDC/American_Community_Survey/2010-2014ACS.shtml

General Demographics

From the American Community Survey's
2010 – 2014 Five-Year Estimates

2010-2014 American Community Survey Five-Year Estimates for Maryland Legislative Districts (House of Delegates)

	Total Population	MoE* +/-	Median Age	MoE* +/-	Percent Age 65 & Over	MoE* +/-	Percent Foreign Born	MoE* +/-	Percent Speak English "Less than Very Well"	MoE* +/-	Percent Age 65 & Over Living Alone	MoE* +/-	Percent Female Headed Household with own Children under 18	MoE* +/-
<i>Jurisdictions</i>														
Legislative Subdistrict 1A	40,736	515	43.8	0.7	18.9	0.6	1.4	0.3	1.2	0.7	13.2	1.3	5.3	1.2
Legislative Subdistrict 1B	41,177	790	41.1	0.8	18.3	0.8	2.7	0.8	1.1	0.3	14.3	1.4	6.1	1.2
Legislative Subdistrict 1C	40,047	1,079	42.4	1.1	18.2	0.9	1.4	0.4	1.0	0.3	12.7	1.4	5.5	1.1
Legislative Subdistrict 2A	89,995	890	42.4	0.5	15.8	0.4	4.6	0.6	1.8	0.3	11.3	1.0	5.8	1.1
Legislative Subdistrict 2B	40,879	238	33.5	0.8	11.8	0.8	7.0	1.1	3.8	1.0	11.7	1.3	12.6	1.7
Legislative Subdistrict 3A	80,025	656	35.7	0.6	12.1	0.5	17.2	1.3	8.7	1.0	9.7	0.9	6.4	1.0
Legislative Subdistrict 3B	39,774	1,008	39.0	1.5	11.6	0.8	9.6	1.3	3.5	0.8	9.7	1.4	6.0	1.3
Legislative District 4	131,941	1,210	40.8	0.4	12.2	0.3	4.7	0.4	1.8	0.3	7.1	0.6	3.9	0.6
Legislative District 5	127,418	855	42.0	0.3	14.5	0.3	3.4	0.4	1.4	0.3	9.7	0.8	4.4	0.7
Legislative District 6	118,922	2,198	40.0	0.9	15.8	0.5	6.3	1.0	2.8	0.5	12.8	0.8	8.3	0.8
Legislative District 7	131,894	1,904	41.9	0.5	15.5	0.5	5.7	1.0	1.9	0.4	8.2	0.8	5.1	0.7
Legislative District 8	123,730	1,972	38.2	0.7	15.1	0.6	11.8	1.0	4.4	0.7	12.0	0.9	8.1	1.0
Legislative Subdistrict 9A	89,899	1,539	43.7	0.6	14.0	0.5	10.8	0.8	4.0	0.5	6.8	0.9	4.6	0.8
Legislative Subdistrict 9B	44,266	1,158	40.1	0.6	11.9	0.7	25.9	1.6	10.2	1.3	7.8	1.4	4.7	1.2
Legislative District 10	121,947	2,473	37.6	0.8	11.5	0.5	14.6	1.0	6.5	0.7	7.8	0.8	11.7	1.2
Legislative District 11	120,782	2,196	40.5	0.6	17.3	0.5	17.1	1.1	7.7	0.8	12.5	1.0	6.9	0.8
Legislative District 12	122,075	2,091	35.4	0.6	13.8	0.6	13.9	1.1	6.7	0.9	10.2	0.9	7.0	0.9
Legislative District 13	128,497	1,858	36.8	0.6	8.8	0.4	19.9	0.9	8.6	0.7	5.8	0.6	7.0	0.9
Legislative District 14	127,919	1,837	41.3	0.7	13.8	0.4	23.3	1.0	8.8	0.8	9.1	0.7	6.1	0.8
Legislative District 15	122,510	1,769	40.0	0.5	11.4	0.4	31.3	1.1	12.4	0.9	6.3	0.7	5.7	0.8
Legislative District 16	124,419	1,649	44.0	0.5	19.0	0.6	24.3	1.0	6.9	0.7	12.1	0.8	3.3	0.5
Legislative District 17	133,432	697	36.7	0.5	12.7	0.5	37.9	1.2	19.0	1.0	8.9	0.7	7.9	0.9
Legislative District 18	125,251	1,785	37.3	0.7	12.2	0.5	33.1	1.0	17.7	1.0	9.4	0.8	5.9	0.9
Legislative District 19	125,249	2,186	41.1	0.8	17.6	0.5	35.4	1.1	16.5	1.0	13.8	0.9	5.3	0.8
Legislative District 20	122,980	2,144	35.0	0.6	9.7	0.4	36.5	1.3	19.3	1.1	7.3	0.7	7.5	0.9
Legislative District 21	130,329	1,756	31.4	0.4	9.7	0.4	23.4	1.0	10.6	0.9	7.4	0.6	6.8	1.0
Legislative District 22	131,087	2,069	32.7	0.5	8.6	0.4	33.1	1.3	12.7	0.9	6.3	0.5	11.9	1.0
Legislative Subdistrict 23A	39,640	1,173	36.3	1.2	10.0	1.0	17.7	2.0	5.9	1.1	4.0	0.8	7.6	1.8
Legislative Subdistrict 23B	81,148	1,693	40.2	0.4	11.7	0.5	10.3	1.1	3.1	0.6	7.2	0.8	8.2	1.2
Legislative District 24	116,248	2,420	37.5	0.6	10.9	0.4	12.2	1.1	4.0	0.7	7.9	0.7	12.9	1.1
Legislative District 25	116,404	2,412	36.9	0.6	10.7	0.4	7.8	0.8	1.8	0.4	7.1	0.7	12.8	1.0
Legislative District 26	119,186	2,324	40.7	0.9	13.2	0.5	11.9	1.0	4.9	0.7	7.7	0.7	9.8	1.0
Legislative Subdistrict 27A	46,983	1,848	40.0	1.0	11.3	1.0	6.2	1.3	2.4	1.1	4.5	1.0	7.3	1.4
Legislative Subdistrict 27B	43,733	1,220	42.7	0.8	12.3	0.8	4.7	0.8	2.4	0.7	4.3	0.8	5.7	1.4
Legislative Subdistrict 27C	44,249	1,070	39.7	1.0	11.1	0.5	3.1	0.7	1.1	0.4	7.2	1.3	8.6	1.4

* MoE: Margin of Error

2010-2014 American Community Survey Five-Year Estimates for Maryland Legislative Districts (House of Delegates)

	Total Population	MoE* +/-	Median Age	MoE* +/-	Percent Age 65 & Over	MoE* +/-	Percent Foreign Born	MoE* +/-	Percent Speak English "Less than Very Well"	MoE* +/-	Percent Age 65 & Over Living Alone	MoE* +/-	Percent Female Headed Household with own Children under 18	MoE* +/-
Legislative District 28	132,104	1,147	37.3	0.4	10.3	0.2	5.7	0.5	2.1	0.4	6.6	0.6	9.6	0.8
Legislative Subdistrict 29A	43,638	1,192	39.9	1.2	13.8	1.0	2.4	0.6	1.4	0.5	7.4	1.4	4.7	1.2
Legislative Subdistrict 29B	44,205	1,120	31.3	0.6	7.5	0.8	6.7	1.0	2.8	0.9	4.9	1.1	7.4	1.6
Legislative Subdistrict 29C	41,460	1,286	39.6	1.5	12.6	1.0	3.8	0.8	1.2	0.4	10.5	1.5	5.1	1.4
Legislative Subdistrict 30A	84,379	1,488	38.6	0.7	16.1	0.6	11.0	1.2	4.7	1.1	13.2	1.1	5.2	0.8
Legislative Subdistrict 30B	41,962	1,450	43.7	1.0	14.4	1.1	3.1	0.8	1.0	0.4	8.0	1.2	4.4	1.0
Legislative Subdistrict 31A	44,020	1,556	36.4	1.2	14.0	1.0	10.0	2.1	6.8	1.6	10.7	1.3	7.8	1.6
Legislative Subdistrict 31B	84,574	1,860	39.6	0.6	12.2	0.6	3.9	0.6	2.1	0.5	6.8	0.9	3.8	0.8
Legislative District 32	137,168	1,865	34.2	0.5	9.1	0.4	11.4	0.9	4.8	0.6	6.1	0.6	7.8	1.1
Legislative District 33	131,425	1,971	41.6	0.5	13.8	0.4	5.9	0.6	2.2	0.4	7.8	0.7	3.5	0.7
Legislative Subdistrict 34A	81,434	1,390	35.9	0.8	11.0	0.5	6.9	0.8	2.9	0.5	7.5	0.9	10.4	1.2
Legislative Subdistrict 34B	42,587	1,055	38.6	1.2	13.1	0.8	5.7	1.0	2.2	0.6	10.1	1.1	4.8	1.2
Legislative Subdistrict 35A	42,968	1,057	39.3	1.1	13.8	0.8	2.7	1.0	1.2	0.7	9.1	1.3	5.0	1.3
Legislative Subdistrict 35B	86,176	1,476	41.4	0.8	13.3	0.6	3.3	0.5	1.2	0.3	7.4	0.8	4.4	0.8
Legislative District 36	126,607	879	42.0	0.4	16.0	0.3	3.9	0.4	2.4	0.3	10.6	0.9	6.5	0.9
Legislative Subdistrict 37A	42,037	1,346	34.5	1.1	13.2	0.9	10.4	1.9	7.4	1.8	10.5	1.3	14.8	2.0
Legislative Subdistrict 37B	85,872	1,143	46.0	0.6	20.6	0.5	4.5	0.5	2.3	0.4	12.2	1.0	6.3	0.9
Legislative Subdistrict 38A	46,421	579	37.6	0.7	15.5	0.5	4.1	0.7	1.6	0.4	12.3	1.4	8.3	1.6
Legislative Subdistrict 38B	42,546	1,417	32.6	1.5	14.4	0.9	7.8	1.2	5.1	1.1	11.2	1.5	8.8	1.9
Legislative Subdistrict 38C	40,405	847	49.9	0.9	25.7	0.8	4.6	0.9	1.6	0.7	13.3	1.5	4.0	1.1
Legislative District 39	123,327	2,109	34.8	0.5	7.2	0.4	37.4	1.2	17.9	1.0	4.5	0.5	7.9	0.9
Legislative District 40	112,428	2,179	33.9	0.8	12.0	0.5	5.9	0.7	2.5	0.5	13.0	0.7	10.9	1.0
Legislative District 41	115,731	2,349	40.5	0.7	17.3	0.7	7.4	0.7	2.5	0.5	14.9	0.9	8.9	0.8
Legislative Subdistrict 42A	43,402	1,228	33.0	1.1	15.1	0.9	10.2	1.3	3.1	0.7	15.6	1.6	4.3	1.0
Legislative Subdistrict 42B	82,087	1,382	44.9	0.7	18.5	0.6	8.9	1.0	2.9	0.5	11.6	1.0	3.7	0.7
Legislative District 43	117,943	2,498	34.6	1.0	12.2	0.5	7.7	0.7	2.4	0.4	10.6	0.8	9.8	0.9
Legislative Subdistrict 44A	41,709	1,812	31.9	1.1	11.3	0.8	2.8	0.8	1.5	0.6	10.3	1.4	20.1	1.9
Legislative Subdistrict 44B	79,614	1,529	38.5	0.8	13.3	0.6	10.8	1.1	4.6	0.7	9.8	0.8	9.1	1.1
Legislative District 45	113,204	2,316	35.5	1.0	10.2	0.4	6.3	0.8	3.0	0.6	9.3	0.7	13.6	1.1
Legislative District 46	121,256	2,517	31.8	0.4	8.2	0.4	11.5	0.9	7.2	0.8	8.2	0.6	10.5	0.9
Legislative Subdistrict 47A	85,018	1,483	33.3	0.7	9.3	0.5	33.0	1.4	16.2	1.2	8.6	0.9	12.3	1.5
Legislative Subdistrict 47B	45,298	1,520	30.9	0.6	5.5	0.5	59.3	1.9	44.5	2.6	3.8	1.0	8.1	1.4

Source: U.S. Census Bureau, 2010-2014 American Community Survey.
Prepared by the Maryland Department of Planning.

Socioeconomic Characteristics

From the American Community Survey's
2010 – 2014 Five-Year Estimates

2010-2014 American Community Survey Five-Year Estimates for Maryland Legislative Districts (House of Delegates)

	Percent Population Ages 25+ w/ less than High School Degree		Percent Population Ages 25+ w/ Bachelor's Degree or higher		Median Household Income		Percent of Persons Below Poverty Level		Percent Population with No Health Insurance		Percent Unemployed	Percent Receiving SNAP Benefits		Percent with a Disability		
	Value	MoE*	Value	MoE*	Value	MoE*	Value	MoE*	Value	MoE*	Value	MoE*	Value	MoE*	Value	MoE*
<i>Jurisdictions</i>																
Legislative Subdistrict 1A	12.5	1.3	17.7	1.5	\$46,334	\$2,136	12.9	2.0	11.0	1.4	7.2	1.0	17.1	1.5	14.7	1.0
Legislative Subdistrict 1B	12.6	1.2	18.4	1.4	\$40,604	\$2,823	16.6	2.1	8.0	1.1	9.8	1.6	15.2	1.9	16.7	1.4
Legislative Subdistrict 1C	14.1	1.3	14.5	1.4	\$44,350	\$2,203	15.6	1.8	9.1	1.2	11.0	1.8	18.0	1.8	18.4	1.2
Legislative Subdistrict 2A	12.5	0.9	22.2	1.2	\$66,259	\$1,734	7.1	0.9	7.5	0.9	6.8	0.8	6.8	0.9	13.8	1.0
Legislative Subdistrict 2B	16.7	1.7	17.3	1.7	\$38,357	\$2,973	25.8	2.4	12.3	1.4	13.7	1.7	28.1	2.5	17.8	1.3
Legislative Subdistrict 3A	11.2	1.1	39.6	1.5	\$68,829	\$2,022	9.8	1.4	10.7	1.2	6.7	0.8	9.7	1.3	11.2	0.9
Legislative Subdistrict 3B	6.0	1.2	42.2	2.2	\$91,583	\$5,017	5.3	1.3	6.8	1.2	7.1	1.3	4.9	1.3	9.8	0.9
Legislative District 4	6.9	0.5	37.5	1.0	\$95,175	\$2,094	4.1	0.5	5.4	0.6	5.6	0.5	4.3	0.7	9.4	0.6
Legislative District 5	8.1	0.6	30.5	1.2	\$82,069	\$2,069	6.1	0.7	5.4	0.5	5.0	0.5	6.8	0.6	9.1	0.5
Legislative District 6	19.1	1.0	10.6	0.8	\$50,508	\$1,381	12.7	1.0	11.5	0.8	11.1	0.8	18.7	1.2	18.0	0.6
Legislative District 7	7.8	0.6	32.8	1.2	\$83,633	\$2,283	6.2	0.8	6.0	0.8	6.3	0.6	5.8	0.6	10.3	0.5
Legislative District 8	9.8	0.8	29.7	1.3	\$62,352	\$1,546	8.7	0.9	9.5	0.9	6.5	0.7	8.2	0.9	11.5	0.7
Legislative Subdistrict 9A	4.1	0.6	56.2	1.7	\$131,802	\$4,169	2.8	0.6	4.1	0.9	3.4	0.6	2.1	0.6	7.0	0.6
Legislative Subdistrict 9B	4.4	1.0	63.8	2.1	\$114,273	\$6,954	4.9	1.3	7.4	1.6	4.3	1.0	4.2	1.1	7.4	0.9
Legislative District 10	8.2	0.8	38.1	1.5	\$69,236	\$2,371	10.7	1.3	10.4	0.9	8.7	0.9	10.6	0.9	9.1	0.6
Legislative District 11	4.4	0.6	55.5	1.6	\$75,812	\$1,820	6.8	0.8	7.1	0.8	5.4	0.7	6.8	0.7	9.2	0.7
Legislative District 12	9.6	0.9	46.9	1.3	\$80,095	\$3,119	9.4	1.0	8.3	0.8	6.6	0.7	8.4	0.8	9.7	0.7
Legislative District 13	5.8	0.7	56.3	1.3	\$104,910	\$2,416	5.3	0.9	8.2	0.8	5.6	0.7	5.9	0.8	7.0	0.6
Legislative District 14	6.0	0.8	54.1	1.1	\$105,392	\$3,061	5.3	0.9	8.3	1.0	6.9	0.7	5.0	0.7	8.5	0.6
Legislative District 15	4.1	0.6	66.5	1.2	\$129,635	\$4,039	4.0	0.6	6.4	0.8	5.7	0.7	3.2	0.6	6.1	0.5
Legislative District 16	1.7	0.3	80.9	1.0	\$143,187	\$3,186	3.2	0.4	3.7	0.7	3.6	0.4	1.0	0.2	7.5	0.5
Legislative District 17	9.9	1.0	56.3	1.1	\$87,176	\$2,129	8.5	0.9	12.4	1.0	5.9	0.7	7.0	0.9	7.8	0.5
Legislative District 18	12.2	1.1	55.6	1.2	\$97,289	\$3,393	8.7	1.1	15.0	1.1	6.8	0.7	6.0	0.7	7.8	0.6
Legislative District 19	12.1	1.1	47.8	1.4	\$88,412	\$2,818	7.0	0.9	12.7	1.1	7.4	0.9	6.2	0.8	9.5	0.5
Legislative District 20	14.0	1.0	50.8	1.2	\$73,686	\$1,772	10.5	1.1	17.0	1.2	8.5	0.9	8.5	0.9	7.5	0.5
Legislative District 21	13.0	1.0	39.8	1.4	\$75,033	\$2,490	11.5	1.0	11.6	0.9	8.1	0.7	6.8	0.8	8.2	0.6
Legislative District 22	18.9	1.1	30.4	1.2	\$64,958	\$1,847	12.1	1.1	20.4	1.0	8.8	0.8	11.2	0.9	7.7	0.6
Legislative Subdistrict 23A	6.5	1.2	45.7	2.6	\$90,699	\$6,484	4.1	1.1	8.9	1.5	6.7	1.1	5.0	1.2	8.7	1.2
Legislative Subdistrict 23B	5.0	0.6	44.6	1.8	\$104,136	\$2,695	3.5	0.7	6.9	0.8	8.0	0.8	4.6	0.7	8.5	0.7
Legislative District 24	10.7	0.8	29.4	1.0	\$70,633	\$1,657	10.0	1.1	10.2	0.8	10.8	1.0	12.9	1.0	9.4	0.6
Legislative District 25	8.5	0.6	26.6	1.2	\$75,560	\$1,574	7.6	1.1	10.0	0.9	10.4	0.9	11.4	1.0	8.7	0.6
Legislative District 26	10.1	0.9	27.6	1.2	\$78,111	\$2,480	8.0	1.2	12.0	0.9	12.0	0.8	11.1	1.0	9.8	0.6
Legislative Subdistrict 27A	8.4	1.2	27.3	2.2	\$100,794	\$3,205	5.1	1.3	9.4	1.3	8.2	1.2	6.4	1.3	8.8	0.8
Legislative Subdistrict 27B	6.9	1.1	33.3	2.3	\$113,295	\$5,983	3.1	0.9	5.8	1.0	6.8	1.1	4.2	0.9	7.5	0.7
Legislative Subdistrict 27C	9.0	1.3	26.1	2.0	\$93,696	\$3,723	7.1	1.5	6.4	0.8	8.5	1.1	9.8	1.6	11.3	1.1

* MoE: Margin of Error

2010-2014 American Community Survey Five-Year Estimates for Maryland Legislative Districts (House of Delegates)

	Percent Population Ages 25+ w/ less than High School Degree		Percent Population Ages 25+ w/ Bachelor's Degree or higher		Median Household Income		Percent of Persons Below Poverty Level		Percent Population with No Health Insurance		Percent Unemployed	Percent Receiving SNAP Benefits		Percent with a Disability		
	MoE* +/-		MoE* +/-		MoE* +/-		MoE* +/-		MoE* +/-		MoE* +/-	MoE* +/-	MoE* +/-		MoE* +/-	
Legislative District 28	8.1	0.7	27.3	1.2	\$91,122	\$2,403	7.8	1.0	5.7	0.6	7.4	0.7	9.5	1.0	9.2	0.5
Legislative Subdistrict 29A	10.7	1.4	22.4	1.8	\$92,964	\$4,904	4.7	1.0	7.2	1.9	5.7	1.3	5.9	1.3	10.3	1.1
Legislative Subdistrict 29B	9.3	1.8	29.1	2.4	\$76,001	\$4,531	10.5	1.7	8.1	1.7	5.6	1.4	15.2	2.3	11.2	1.6
Legislative Subdistrict 29C	5.6	1.2	36.8	2.5	\$94,355	\$2,829	5.4	1.6	8.0	1.8	7.6	1.6	7.4	1.7	10.8	1.3
Legislative Subdistrict 30A	8.0	1.1	49.6	1.6	\$87,449	\$3,483	7.3	1.3	8.0	1.2	4.9	0.8	6.3	1.1	9.7	0.8
Legislative Subdistrict 30B	8.1	1.3	31.5	2.1	\$96,131	\$3,427	5.6	1.4	6.0	1.1	7.3	1.3	5.9	1.3	9.7	1.2
Legislative Subdistrict 31A	19.3	2.2	15.2	1.4	\$57,038	\$3,111	11.8	2.1	13.3	2.1	11.3	1.6	17.4	2.2	14.6	1.3
Legislative Subdistrict 31B	9.1	0.9	28.1	1.4	\$91,719	\$4,095	4.5	0.7	6.5	0.9	7.0	0.9	4.9	0.9	9.8	0.7
Legislative District 32	11.4	0.9	29.6	1.4	\$78,828	\$3,818	7.4	1.1	8.1	0.9	7.2	0.6	8.3	1.1	9.5	0.7
Legislative District 33	4.4	0.5	52.3	1.3	\$115,571	\$2,338	3.1	0.5	4.5	0.5	4.9	0.6	2.4	0.5	7.6	0.6
Legislative Subdistrict 34A	9.0	0.9	25.0	1.5	\$62,954	\$2,349	12.6	1.6	8.2	1.1	9.5	1.3	14.2	1.4	12.3	0.8
Legislative Subdistrict 34B	4.2	0.9	40.8	2.3	\$88,151	\$2,649	5.4	1.4	3.8	0.9	6.1	1.0	5.0	1.2	8.6	0.9
Legislative Subdistrict 35A	12.7	1.6	22.8	1.7	\$61,724	\$2,581	10.6	2.4	8.6	1.4	9.4	1.6	11.0	1.8	12.9	1.6
Legislative Subdistrict 35B	10.0	0.9	30.8	1.4	\$85,962	\$3,353	7.6	1.2	6.0	0.7	6.3	0.8	6.4	1.0	10.4	0.8
Legislative District 36	11.7	0.7	26.2	1.1	\$69,119	\$1,885	9.9	1.0	8.2	0.8	7.6	0.7	10.0	0.9	12.1	0.6
Legislative Subdistrict 37A	21.6	2.1	14.1	1.8	\$35,554	\$2,092	25.6	2.6	14.1	1.6	13.1	1.7	31.2	2.4	14.4	1.4
Legislative Subdistrict 37B	11.7	1.0	30.8	1.2	\$60,849	\$1,790	10.3	1.1	9.9	0.7	7.6	0.8	11.1	0.9	13.4	0.7
Legislative Subdistrict 38A	18.7	1.7	17.7	1.6	\$40,181	\$2,104	19.8	2.2	12.7	1.5	11.9	1.6	22.4	2.0	15.2	0.9
Legislative Subdistrict 38B	9.8	1.3	33.0	2.5	\$52,852	\$2,503	19.7	3.1	9.9	1.5	8.6	1.7	11.9	2.0	11.0	1.1
Legislative Subdistrict 38C	9.1	0.9	29.2	1.8	\$62,151	\$2,529	8.1	1.5	9.7	1.4	9.1	1.6	7.7	1.5	14.0	1.1
Legislative District 39	9.4	0.9	45.9	1.5	\$86,049	\$2,827	7.7	1.0	13.6	1.1	6.7	0.7	9.0	1.0	6.3	0.6
Legislative District 40	23.3	1.1	24.9	1.1	\$32,463	\$1,120	31.1	1.6	12.6	0.8	16.6	1.5	29.1	1.3	18.4	0.8
Legislative District 41	15.8	1.3	28.8	1.0	\$44,950	\$1,479	19.8	1.4	10.2	0.8	13.2	1.3	20.0	1.1	16.3	1.0
Legislative Subdistrict 42A	4.5	0.9	63.3	1.9	\$70,363	\$4,336	11.6	1.7	6.9	1.0	5.7	1.0	4.1	0.9	8.8	0.8
Legislative Subdistrict 42B	5.8	0.8	49.8	1.6	\$88,934	\$2,747	5.1	0.9	5.3	0.8	5.2	0.8	2.8	0.8	9.2	0.7
Legislative District 43	13.8	0.8	33.6	1.4	\$45,321	\$1,308	20.9	1.4	10.1	0.7	12.7	1.0	20.8	1.2	12.7	0.7
Legislative Subdistrict 44A	24.3	1.9	13.2	1.8	\$31,828	\$2,438	34.6	3.1	11.2	1.5	20.1	2.2	36.5	2.5	17.3	1.3
Legislative Subdistrict 44B	9.5	1.0	34.9	1.5	\$67,296	\$2,221	7.4	0.9	9.7	1.1	9.0	1.1	11.0	1.3	10.3	0.7
Legislative District 45	18.5	1.2	19.1	1.1	\$38,631	\$1,844	22.3	1.4	10.7	0.9	15.1	1.0	27.6	1.3	14.9	0.9
Legislative District 46	22.1	1.1	35.7	1.1	\$52,833	\$1,874	23.3	1.5	14.7	1.0	10.7	0.8	21.8	1.2	14.1	0.8
Legislative Subdistrict 47A	26.1	1.5	18.6	1.3	\$53,588	\$1,421	13.7	1.4	23.1	1.4	10.3	1.0	14.0	1.1	8.2	0.7
Legislative Subdistrict 47B	46.4	2.8	17.2	1.6	\$57,265	\$2,472	18.3	2.0	44.3	2.0	8.7	1.3	11.9	1.8	5.9	0.8

Source: U.S. Census Bureau, 2010-2014 American Community Survey.
Prepared by the Maryland Department of Planning.

* MoE: Margin of Error

Housing Characteristics

From the American Community Survey's
2010 – 2014 Five-Year Estimates

2010-2014 American Community Survey Five-Year Estimates for Maryland Legislative Districts (House of Delegates)

	Total Housing Units	Percent Owner Occupied		Median Home Value	Percent of Owners Spending 35% or more of Income on Housing ^		Median Gross Rent	Percent Renters Spending 35% or more of Income on Rent				
		MoE* +/-	MoE* +/-		MoE* +/-	MoE* +/-		MoE* +/-	MoE* +/-			
<i>Jurisdictions</i>												
Legislative Subdistrict 1A	23,935	212	76.0	2.0	\$152,000	\$6,003	22.3	2.9	\$627	\$43	36.9	5.2
Legislative Subdistrict 1B	17,568	354	69.7	2.1	\$131,500	\$6,556	21.2	3.5	\$644	\$40	44.1	4.9
Legislative Subdistrict 1C	18,496	396	69.3	2.3	\$151,100	\$6,963	23.8	2.9	\$662	\$35	42.6	5.2
Legislative Subdistrict 2A	34,482	489	75.8	1.8	\$220,700	\$4,976	25.3	2.2	\$916	\$48	31.7	3.7
Legislative Subdistrict 2B	18,798	401	38.2	2.1	\$151,100	\$4,590	24.1	4.5	\$821	\$28	43.1	3.4
Legislative Subdistrict 3A	32,992	492	57.5	1.9	\$259,300	\$6,102	23.5	2.4	\$1,246	\$31	42.3	3.2
Legislative Subdistrict 3B	15,578	345	76.6	2.3	\$306,600	\$11,426	19.3	2.8	\$1,499	\$92	37.5	7.2
Legislative District 4	47,680	476	86.3	1.1	\$331,100	\$4,436	22.1	1.3	\$1,183	\$66	42.6	4.8
Legislative District 5	48,275	341	82.1	1.0	\$308,000	\$5,118	24.5	1.4	\$1,037	\$45	40.3	4.1
Legislative District 6	50,455	335	64.2	1.3	\$164,800	\$1,873	26.1	1.8	\$957	\$20	42.5	2.7
Legislative District 7	50,308	449	84.2	1.0	\$313,800	\$5,458	22.8	1.5	\$1,127	\$28	42.2	4.3
Legislative District 8	52,998	307	66.1	1.3	\$223,900	\$2,189	22.6	2.0	\$1,174	\$20	45.6	3.1
Legislative Subdistrict 9A	31,079	399	88.6	1.3	\$516,100	\$10,191	20.8	1.6	\$1,346	\$64	39.8	6.3
Legislative Subdistrict 9B	15,961	300	72.2	1.6	\$516,000	\$13,006	18.7	2.7	\$1,452	\$42	34.5	5.6
Legislative District 10	48,027	534	64.3	1.3	\$239,200	\$3,800	26.4	1.7	\$1,182	\$22	42.1	3.1
Legislative District 11	53,603	460	58.6	1.1	\$326,600	\$7,300	25.4	2.1	\$1,216	\$16	32.2	2.9
Legislative District 12	49,532	503	62.2	1.3	\$300,900	\$5,778	22.0	1.9	\$1,411	\$39	42.1	2.8
Legislative District 13	47,397	424	72.0	1.3	\$361,500	\$4,014	19.6	1.9	\$1,520	\$54	37.7	3.6
Legislative District 14	45,895	354	78.6	1.0	\$436,700	\$4,979	24.5	1.8	\$1,619	\$54	51.0	4.0
Legislative District 15	43,531	350	81.9	1.2	\$577,300	\$10,063	24.2	2.0	\$1,776	\$44	38.9	3.9
Legislative District 16	53,495	377	68.9	0.9	\$802,500	\$11,723	20.9	1.6	\$1,919	\$40	32.5	2.8
Legislative District 17	52,761	800	55.1	1.2	\$415,200	\$10,114	24.4	1.6	\$1,631	\$28	40.1	2.4
Legislative District 18	46,763	414	64.5	1.2	\$429,000	\$10,433	24.0	1.7	\$1,691	\$34	39.3	3.0
Legislative District 19	45,535	397	73.0	1.1	\$388,800	\$5,153	26.4	1.8	\$1,525	\$48	46.1	3.7
Legislative District 20	48,886	378	44.7	1.1	\$417,800	\$7,831	23.0	1.9	\$1,414	\$18	41.5	2.1
Legislative District 21	45,491	675	59.3	1.3	\$280,000	\$4,117	28.3	1.8	\$1,432	\$23	43.6	2.9
Legislative District 22	46,807	674	53.3	1.2	\$235,300	\$3,815	34.4	2.2	\$1,290	\$21	41.8	2.4
Legislative Subdistrict 23A	14,451	263	69.2	2.2	\$319,700	\$8,069	29.2	3.8	\$1,312	\$47	32.4	5.3
Legislative Subdistrict 23B	30,177	407	82.4	1.5	\$296,600	\$4,489	28.3	2.2	\$1,753	\$73	38.9	5.3
Legislative District 24	48,329	602	61.5	1.2	\$249,400	\$4,825	35.1	2.2	\$1,268	\$32	41.7	2.7
Legislative District 25	46,179	585	65.6	1.2	\$238,000	\$3,786	28.2	1.7	\$1,279	\$34	43.6	3.1
Legislative District 26	47,629	411	68.4	1.2	\$260,700	\$4,310	30.7	1.9	\$1,239	\$24	41.4	3.6
Legislative Subdistrict 27A	16,090	373	85.3	2.0	\$292,800	\$7,761	25.0	2.7	\$1,610	\$113	36.8	7.8
Legislative Subdistrict 27B	14,820	285	91.8	1.4	\$374,100	\$8,335	26.8	2.7	\$1,622	\$254	46.3	10.6
Legislative Subdistrict 27C	16,940	304	77.2	2.1	\$339,700	\$7,281	24.1	2.5	\$1,417	\$85	47.2	6.0

* MoE: Margin of Error

^ Homeowners with a mortgage

2010-2014 American Community Survey Five-Year Estimates for Maryland Legislative Districts (House of Delegates)

	Total Housing Units	Percent Owner		Median Home Value	Percent of Owners Spending 35% or more of Income on Housing ^		Median Gross Rent	Percent Renters Spending 35% or more of Income on Rent				
		MoE* +/-	Occupied Housing Units		MoE* +/-	MoE* +/-		MoE* +/-	MoE* +/-			
Legislative District 28	49,729	255	78.2	1.0	\$284,200	\$4,238	25.1	1.7	\$1,490	\$61	49.7	3.9
Legislative Subdistrict 29A	15,791	320	85.2	2.1	\$313,600	\$7,626	19.0	2.1	\$1,199	\$138	35.0	7.3
Legislative Subdistrict 29B	18,139	311	57.3	2.7	\$268,700	\$9,441	20.8	3.9	\$1,266	\$56	35.3	4.8
Legislative Subdistrict 29C	17,417	407	79.0	2.6	\$293,700	\$7,160	23.0	3.0	\$1,482	\$132	33.0	5.7
Legislative Subdistrict 30A	36,623	692	63.9	1.8	\$389,800	\$8,708	28.3	2.5	\$1,541	\$52	35.5	3.5
Legislative Subdistrict 30B	16,920	249	86.5	2.0	\$383,000	\$12,116	27.2	3.0	\$1,673	\$286	34.7	9.3
Legislative Subdistrict 31A	17,717	246	64.0	2.2	\$213,700	\$5,083	31.6	3.4	\$1,156	\$40	39.2	4.9
Legislative Subdistrict 31B	32,615	328	88.2	1.4	\$298,300	\$5,066	23.0	2.4	\$1,336	\$120	42.6	7.1
Legislative District 32	52,353	554	59.8	1.4	\$276,400	\$3,247	22.2	2.3	\$1,467	\$36	39.5	3.3
Legislative District 33	48,769	407	87.5	1.0	\$427,000	\$7,344	20.5	1.4	\$1,684	\$55	38.5	5.9
Legislative Subdistrict 34A	33,422	469	66.2	1.7	\$220,400	\$5,571	27.1	2.9	\$1,093	\$35	42.3	3.8
Legislative Subdistrict 34B	17,095	400	82.7	1.6	\$270,500	\$4,560	19.0	2.2	\$1,160	\$42	37.8	6.3
Legislative Subdistrict 35A	17,614	410	69.7	2.2	\$233,900	\$6,733	25.5	3.3	\$997	\$51	44.2	5.5
Legislative Subdistrict 35B	31,673	398	85.0	1.6	\$296,300	\$5,178	22.1	2.0	\$1,150	\$44	39.3	5.8
Legislative District 36	56,217	349	76.9	1.1	\$277,400	\$4,715	27.0	2.0	\$990	\$25	41.7	3.8
Legislative Subdistrict 37A	18,564	578	42.6	2.5	\$146,300	\$5,962	30.7	5.3	\$872	\$30	48.9	3.9
Legislative Subdistrict 37B	41,966	433	75.8	1.5	\$252,100	\$7,458	29.0	1.7	\$1,016	\$35	46.0	3.9
Legislative Subdistrict 38A	19,572	693	66.1	2.5	\$163,300	\$5,462	35.2	3.9	\$751	\$37	50.1	5.6
Legislative Subdistrict 38B	17,303	512	62.0	2.5	\$167,900	\$4,446	23.6	3.7	\$1,093	\$45	45.6	5.1
Legislative Subdistrict 38C	51,232	296	81.6	2.1	\$248,300	\$7,560	30.8	3.1	\$1,121	\$71	47.0	7.8
Legislative District 39	43,384	280	69.9	1.5	\$299,900	\$7,217	26.3	1.8	\$1,553	\$45	42.2	3.3
Legislative District 40	60,737	625	36.6	1.2	\$121,000	\$4,195	31.1	2.7	\$903	\$24	47.6	1.8
Legislative District 41	52,107	536	53.2	1.6	\$163,300	\$3,675	32.4	2.3	\$983	\$16	45.8	2.6
Legislative Subdistrict 42A	17,147	237	56.5	1.7	\$305,400	\$8,365	18.9	2.9	\$1,253	\$38	49.1	4.2
Legislative Subdistrict 42B	32,965	352	79.7	1.1	\$358,900	\$6,461	21.8	1.9	\$1,244	\$34	44.3	4.4
Legislative District 43	52,803	387	51.7	1.3	\$159,800	\$3,091	28.5	2.0	\$937	\$17	46.9	2.2
Legislative Subdistrict 44A	20,667	340	42.5	2.5	\$107,400	\$5,284	32.3	4.1	\$907	\$30	51.5	3.4
Legislative Subdistrict 44B	32,384	374	66.6	1.6	\$226,300	\$3,621	23.4	2.0	\$1,112	\$29	40.1	3.3
Legislative District 45	55,085	488	51.0	1.6	\$137,700	\$3,666	32.6	2.4	\$894	\$19	51.9	2.5
Legislative District 46	55,232	541	45.6	1.4	\$215,400	\$5,206	24.6	2.0	\$1,027	\$27	38.1	1.8
Legislative Subdistrict 47A	32,187	461	43.2	1.4	\$220,800	\$5,310	36.6	2.5	\$1,146	\$14	42.8	2.7
Legislative Subdistrict 47B	13,003	254	38.4	2.1	\$201,300	\$9,932	38.2	3.6	\$1,268	\$28	41.8	3.9

Source: U.S. Census Bureau, 2010-2014 American Community Survey.
Prepared by the Maryland Department of Planning.

* MoE: Margin of Error

^ Homeowners with a mortgage

Revised December, 2015

Journey to Work Characteristics

From the American Community Survey's
2010 – 2014 Five-Year Estimates

2010-2014 American Community Survey Five-Year Estimates for Maryland Legislative Districts (House of Delegates)

	Mean Travel		Percent Workers		Percent		Percent		Percent		Percent of	
	Time to Work (Min.)	MoE* +/-	Commuting 60 min. or longer	MoE* +/-	Commuting on Public Transit	MoE* +/-	Commuting by Carpool	MoE* +/-	Workers Who Work At Home	MoE* +/-	Households With no Vehicle	MoE* +/-
<i>Jurisdictions</i>												
Legislative Subdistrict 1A	24.0	1.1	6.4	1.2	0.4	0.4	12.3	1.5	4.9	1.1	7.5	1.0
Legislative Subdistrict 1B	20.3	1.3	6.4	1.3	0.5	0.3	10.6	1.6	2.4	0.7	9.2	1.6
Legislative Subdistrict 1C	23.8	1.2	7.8	1.4	0.6	0.3	10.6	1.7	3.5	1.0	9.5	1.4
Legislative Subdistrict 2A	30.5	0.9	15.0	1.1	0.7	0.3	8.6	1.1	4.8	0.8	4.2	0.7
Legislative Subdistrict 2B	24.3	1.1	10.2	1.3	2.6	0.8	12.4	1.9	2.9	0.9	18.4	2.0
Legislative Subdistrict 3A	32.5	1.5	20.1	1.9	3.8	0.8	14.3	1.7	6.2	1.0	9.2	1.2
Legislative Subdistrict 3B	36.1	1.3	24.3	2.0	4.2	1.0	11.8	1.5	5.5	1.2	3.2	1.0
Legislative District 4	36.7	0.6	21.7	1.0	1.9	0.3	9.7	0.9	6.5	0.6	2.9	0.5
Legislative District 5	34.7	0.7	18.7	1.1	1.0	0.3	8.8	0.7	4.5	0.4	4.1	0.5
Legislative District 6	28.3	0.6	8.6	0.8	4.8	0.7	12.5	1.1	1.5	0.3	12.5	0.9
Legislative District 7	33.3	0.8	13.0	1.2	1.5	0.3	8.7	1.0	4.1	0.5	3.3	0.6
Legislative District 8	28.9	0.6	7.2	0.8	3.1	0.5	10.0	1.0	2.3	0.4	8.6	0.9
Legislative Subdistrict 9A	34.2	0.8	13.3	1.2	1.7	0.4	7.6	1.0	7.8	1.0	2.3	0.6
Legislative Subdistrict 9B	28.9	1.0	9.4	1.4	2.6	0.6	7.4	1.3	6.1	1.0	3.7	1.2
Legislative District 10	33.0	0.8	12.7	1.1	8.0	0.9	9.9	1.1	2.9	0.5	6.8	0.9
Legislative District 11	27.0	0.5	7.5	0.9	5.8	1.0	8.3	1.2	4.8	0.6	6.5	0.8
Legislative District 12	28.0	0.7	10.3	1.0	4.5	0.7	7.8	1.0	4.5	0.6	7.1	0.8
Legislative District 13	30.1	0.5	12.7	0.8	5.1	0.6	8.0	0.9	4.2	0.6	3.4	0.6
Legislative District 14	37.6	0.8	19.4	1.2	7.9	0.8	9.1	0.8	5.6	0.6	5.5	0.8
Legislative District 15	35.5	0.7	18.7	1.1	8.1	0.9	9.8	1.0	7.3	0.6	2.8	0.5
Legislative District 16	29.8	0.5	8.2	0.8	16.3	1.0	6.6	0.7	9.7	0.8	7.2	0.8
Legislative District 17	31.7	0.7	15.9	1.2	15.6	1.2	10.3	1.0	4.9	0.5	8.5	0.6
Legislative District 18	33.2	0.6	13.4	1.0	23.1	1.4	10.6	1.0	5.4	0.5	8.8	0.9
Legislative District 19	35.4	0.7	17.4	1.2	14.3	1.0	12.2	1.3	4.7	0.6	6.2	0.8
Legislative District 20	35.3	0.6	14.6	1.0	25.0	1.1	10.7	1.1	4.5	0.6	14.3	1.2
Legislative District 21	32.1	0.8	15.3	1.3	9.5	1.0	10.5	1.1	3.5	0.6	6.5	0.8
Legislative District 22	34.0	0.7	16.6	1.2	19.4	1.0	12.7	1.1	2.0	0.3	11.0	0.9
Legislative Subdistrict 23A	35.9	1.3	19.5	2.4	9.8	1.7	12.6	2.1	3.6	1.0	3.8	1.1
Legislative Subdistrict 23B	37.4	0.8	22.5	1.5	9.8	1.2	9.9	0.9	3.4	0.6	3.1	0.6
Legislative District 24	36.3	0.8	17.3	1.1	21.6	1.5	10.3	1.1	2.3	0.4	12.0	1.1
Legislative District 25	36.6	0.6	19.2	1.3	18.9	1.3	9.6	0.9	2.6	0.5	9.6	0.8
Legislative District 26	38.6	0.6	22.7	1.2	17.7	1.3	10.3	1.1	2.9	0.4	8.9	0.8
Legislative Subdistrict 27A	42.1	1.1	26.2	2.1	10.1	1.4	9.5	1.9	3.1	1.0	2.4	0.9
Legislative Subdistrict 27B	39.6	1.1	24.9	1.9	5.7	0.9	9.9	1.5	3.4	0.9	1.6	0.7
Legislative Subdistrict 27C	40.7	1.4	29.2	2.1	3.1	0.8	11.0	1.5	4.5	1.0	3.7	0.9

* MoE: Margin of Error

2010-2014 American Community Survey Five-Year Estimates for Maryland Legislative Districts (House of Delegates)

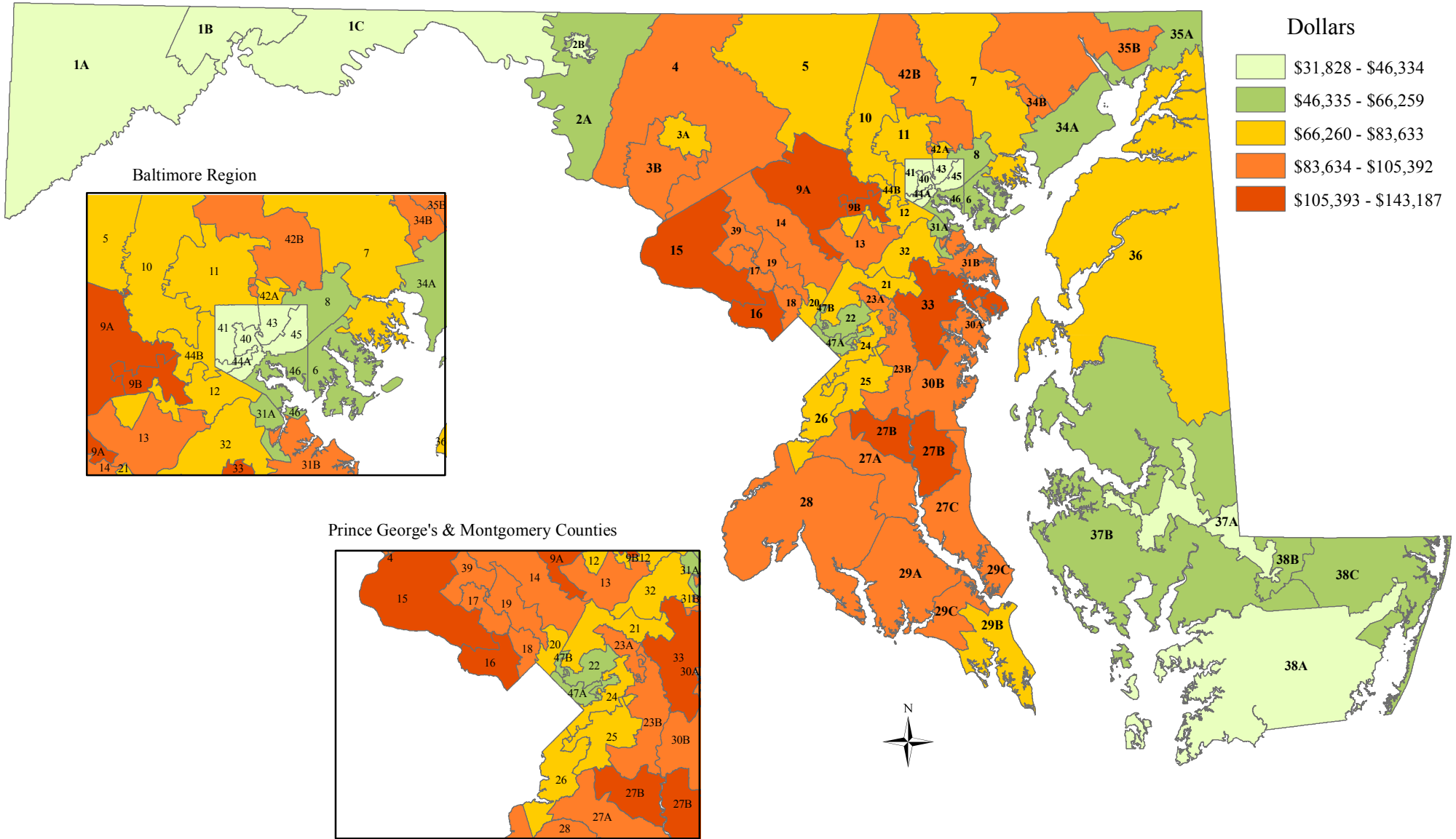
	Mean Travel Time to Work (Min.)	MoE* +/-	Percent Workers Commuting 60 min. or longer	MoE* +/-	Percent Commuting on Public Transit	MoE* +/-	Percent Commuting by Carpool	MoE* +/-	Percent Workers Who Work At Home	MoE* +/-	Percent of Households With no Vehicle	MoE* +/-
Legislative District 28	42.8	0.9	30.8	1.4	7.0	0.8	9.3	1.0	3.2	0.4	3.8	0.5
Legislative Subdistrict 29A	37.5	1.4	22.5	2.0	3.0	0.8	8.5	1.4	3.0	0.8	3.7	1.1
Legislative Subdistrict 29B	22.4	1.5	7.3	1.4	2.1	0.9	7.4	1.7	1.7	0.7	7.8	1.7
Legislative Subdistrict 29C	31.6	1.5	16.0	2.2	1.9	0.7	8.4	1.6	3.4	1.0	4.3	1.2
Legislative Subdistrict 30A	27.6	1.0	12.5	1.2	4.6	0.9	7.2	1.4	10.5	1.2	6.9	1.0
Legislative Subdistrict 30B	37.7	1.6	19.2	2.4	2.7	0.7	9.2	1.6	5.0	1.2	3.2	1.0
Legislative Subdistrict 31A	26.8	1.1	8.0	1.5	2.9	0.9	12.5	2.2	0.7	0.4	10.3	1.5
Legislative Subdistrict 31B	29.4	0.7	9.2	1.0	1.0	0.3	7.2	1.2	3.7	0.7	2.0	0.5
Legislative District 32	27.6	0.8	10.9	1.1	4.5	0.8	9.4	1.1	2.8	0.5	4.7	0.7
Legislative District 33	31.3	0.7	13.5	0.9	2.6	0.4	6.6	0.8	5.2	0.5	1.8	0.4
Legislative Subdistrict 34A	29.4	1.0	11.9	1.3	2.9	0.7	11.6	1.4	3.0	0.7	7.5	0.9
Legislative Subdistrict 34B	31.8	0.9	14.2	1.5	1.2	0.4	7.9	1.4	4.2	0.8	4.4	0.9
Legislative Subdistrict 35A	27.1	1.3	8.8	1.6	1.1	0.5	9.0	1.7	3.8	0.9	4.8	1.1
Legislative Subdistrict 35B	32.2	0.7	14.5	1.1	1.0	0.3	8.5	0.9	4.3	0.8	3.5	0.8
Legislative District 36	32.1	0.7	15.8	1.1	1.1	0.3	9.6	1.1	6.3	0.7	5.2	0.7
Legislative Subdistrict 37A	23.0	1.1	7.0	1.2	1.7	0.7	12.1	2.2	1.6	0.6	16.0	1.8
Legislative Subdistrict 37B	25.6	0.9	10.0	1.0	0.4	0.2	8.8	1.2	5.5	0.7	4.9	0.7
Legislative Subdistrict 38A	23.4	1.2	4.9	1.1	2.5	1.1	7.7	1.3	4.3	1.0	10.6	1.7
Legislative Subdistrict 38B	19.6	1.2	5.4	1.6	0.7	0.4	9.4	2.1	2.6	0.7	6.2	1.4
Legislative Subdistrict 38C	22.8	1.3	5.3	1.2	1.0	0.8	6.2	1.3	7.2	1.5	3.4	0.9
Legislative District 39	36.7	0.8	21.4	1.2	12.7	1.1	11.2	1.0	3.3	0.5	6.1	0.8
Legislative District 40	30.1	0.9	14.0	1.2	23.9	1.6	9.8	1.0	2.5	0.6	40.2	1.5
Legislative District 41	30.4	0.8	13.1	1.1	17.6	1.8	9.7	1.2	3.8	0.6	24.0	1.5
Legislative Subdistrict 42A	26.6	1.1	8.2	1.5	4.5	1.0	6.5	1.3	5.8	1.0	9.7	1.5
Legislative Subdistrict 42B	29.1	0.7	9.1	0.8	1.6	0.4	8.2	1.0	5.9	0.9	3.9	0.7
Legislative District 43	29.7	1.0	11.6	1.2	16.8	1.3	9.1	1.0	2.9	0.6	25.2	1.2
Legislative Subdistrict 44A	33.0	1.6	16.6	2.3	26.7	2.6	10.3	2.3	1.8	0.9	41.2	2.8
Legislative Subdistrict 44B	28.7	0.8	9.3	1.3	6.0	1.1	7.6	1.0	2.8	0.6	8.4	1.1
Legislative District 45	31.2	0.8	12.7	1.2	19.2	1.5	9.0	1.2	2.1	0.5	31.5	1.4
Legislative District 46	28.6	0.7	10.9	1.0	12.8	1.2	11.1	1.2	2.7	0.4	25.4	1.2
Legislative Subdistrict 47A	35.4	0.8	18.6	1.3	26.4	1.6	11.9	1.2	1.9	0.5	18.5	1.5
Legislative Subdistrict 47B	37.2	1.5	21.6	2.4	20.7	2.6	32.0	2.6	1.0	0.4	17.9	2.5

Source: U.S. Census Bureau, 2010-2014 American Community Survey.
Prepared by the Maryland Department of Planning.

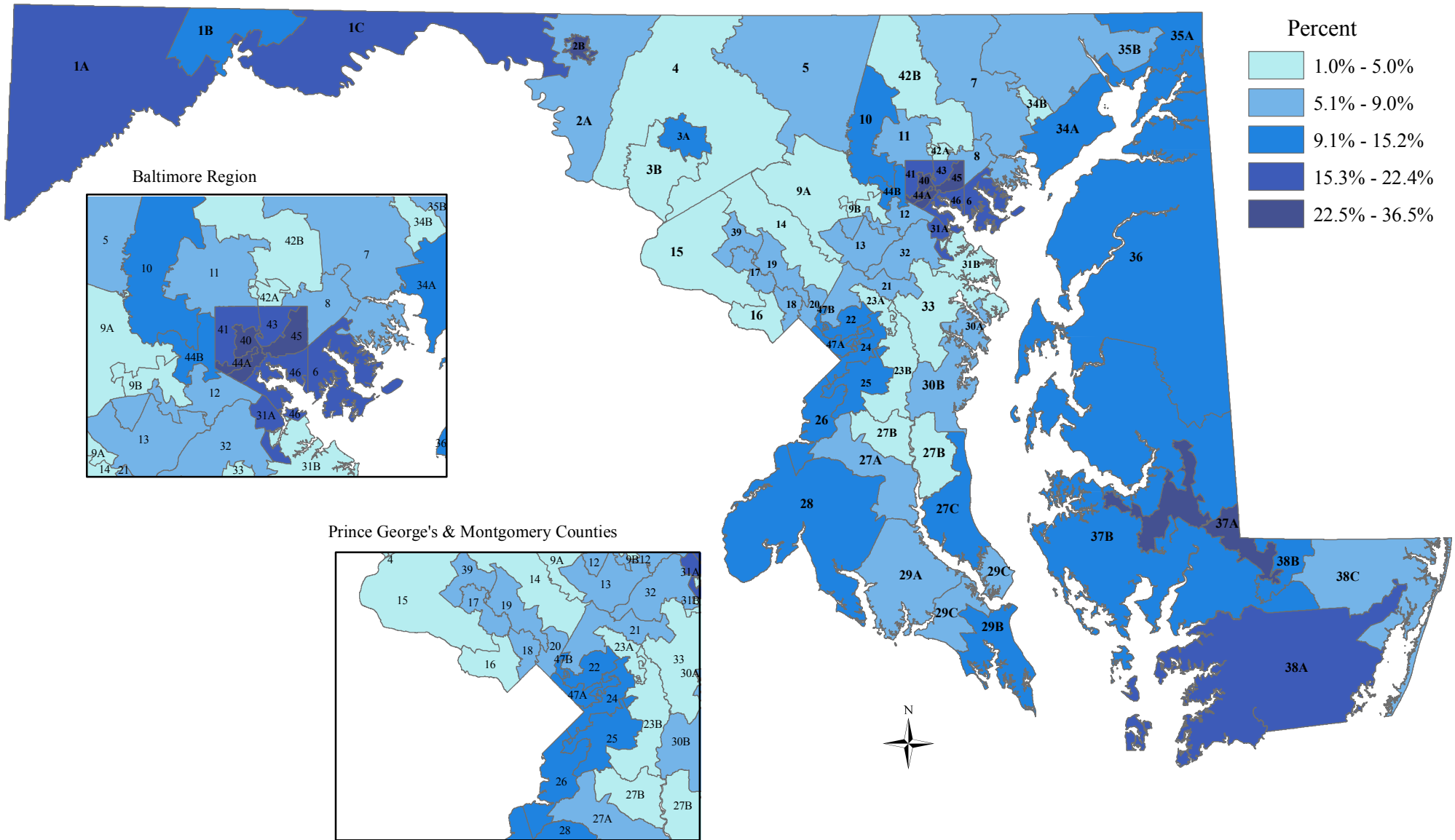
Maps

From the American Community Survey's
2010 – 2014 Five-Year Estimates

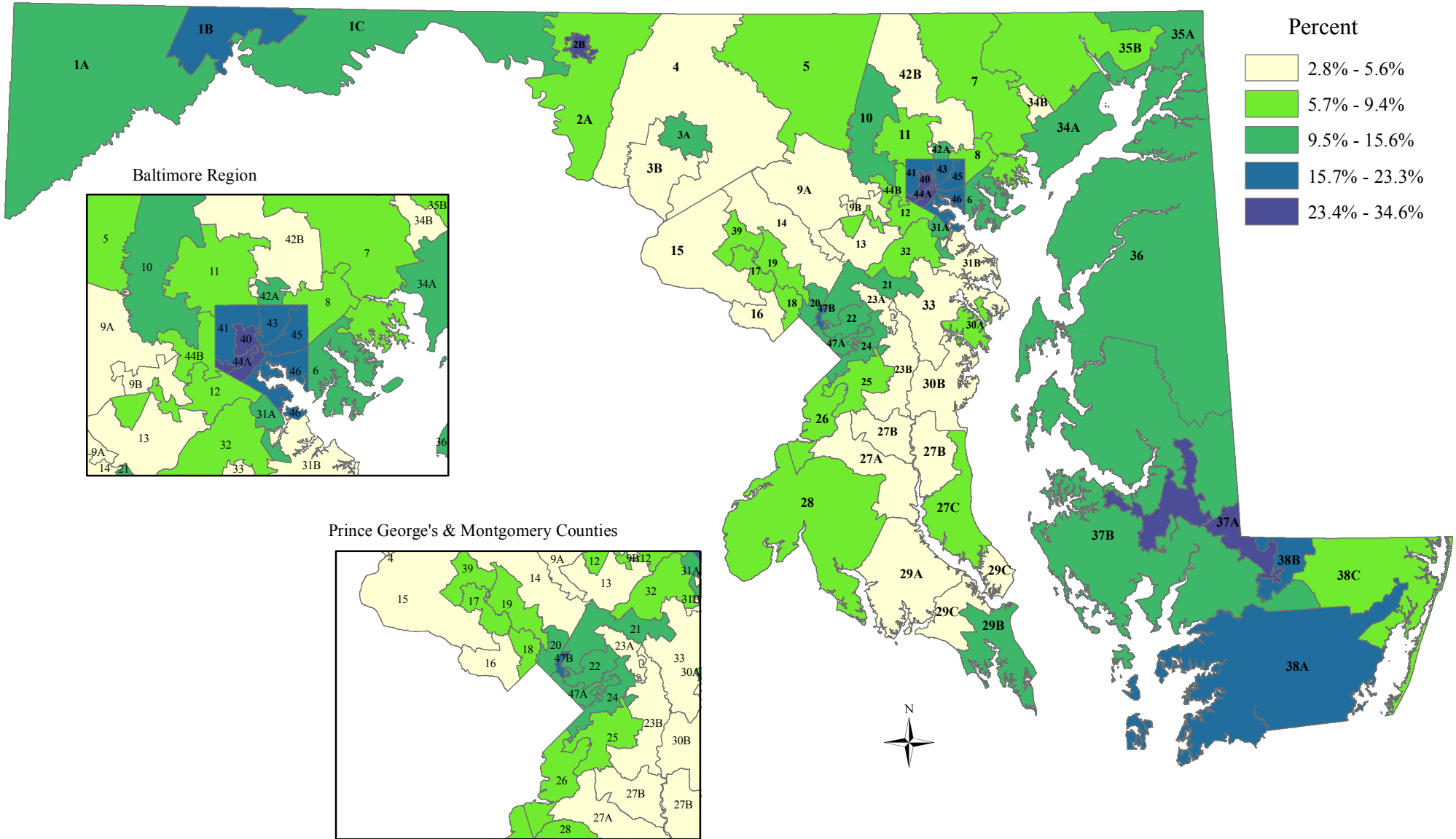
Median Household Income by Legislative District, 2010 to 2014



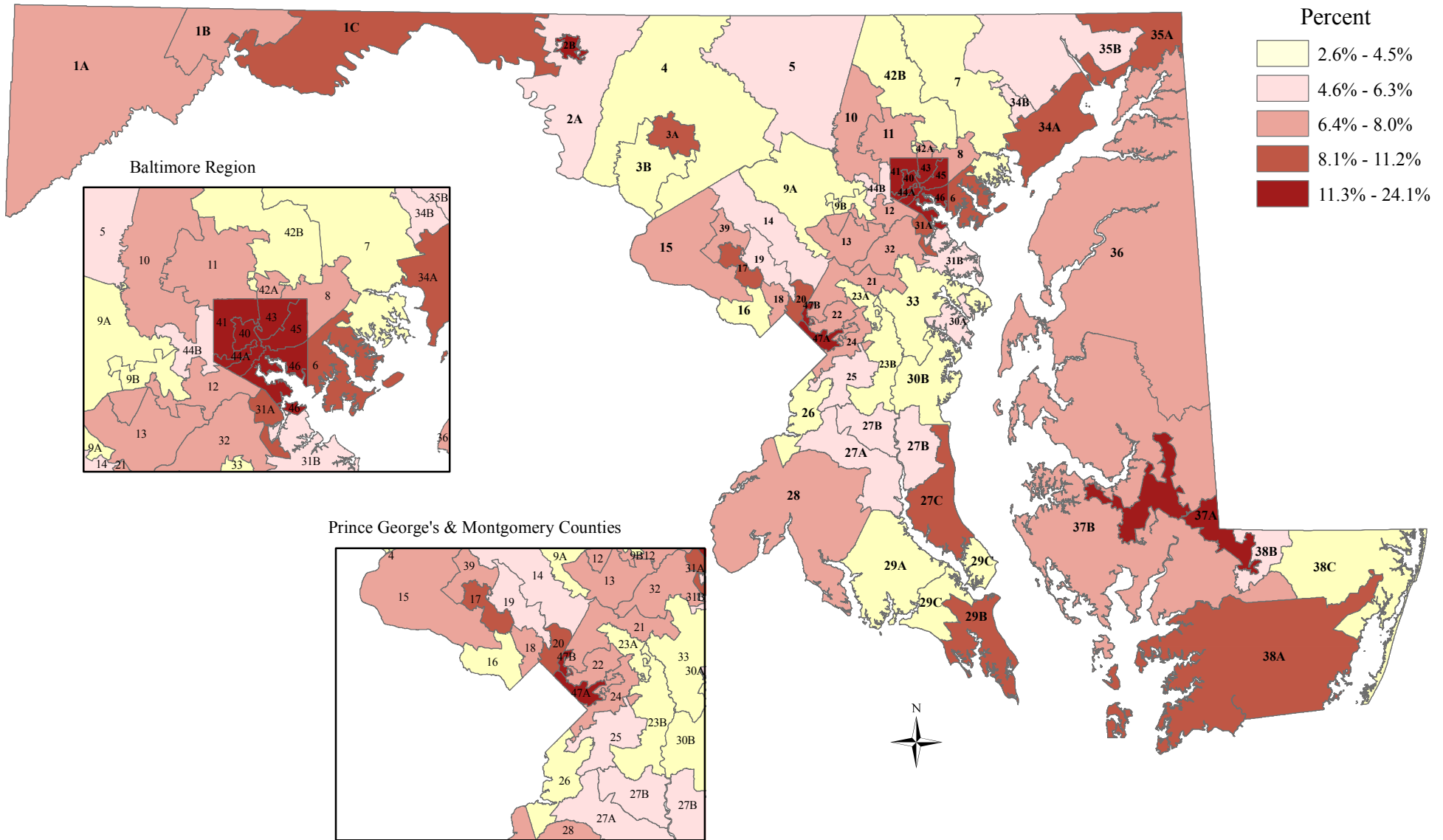
Percent of Households Receiving Food Stamps/SNAP Benefits by Legislative District, 2010 to 2014



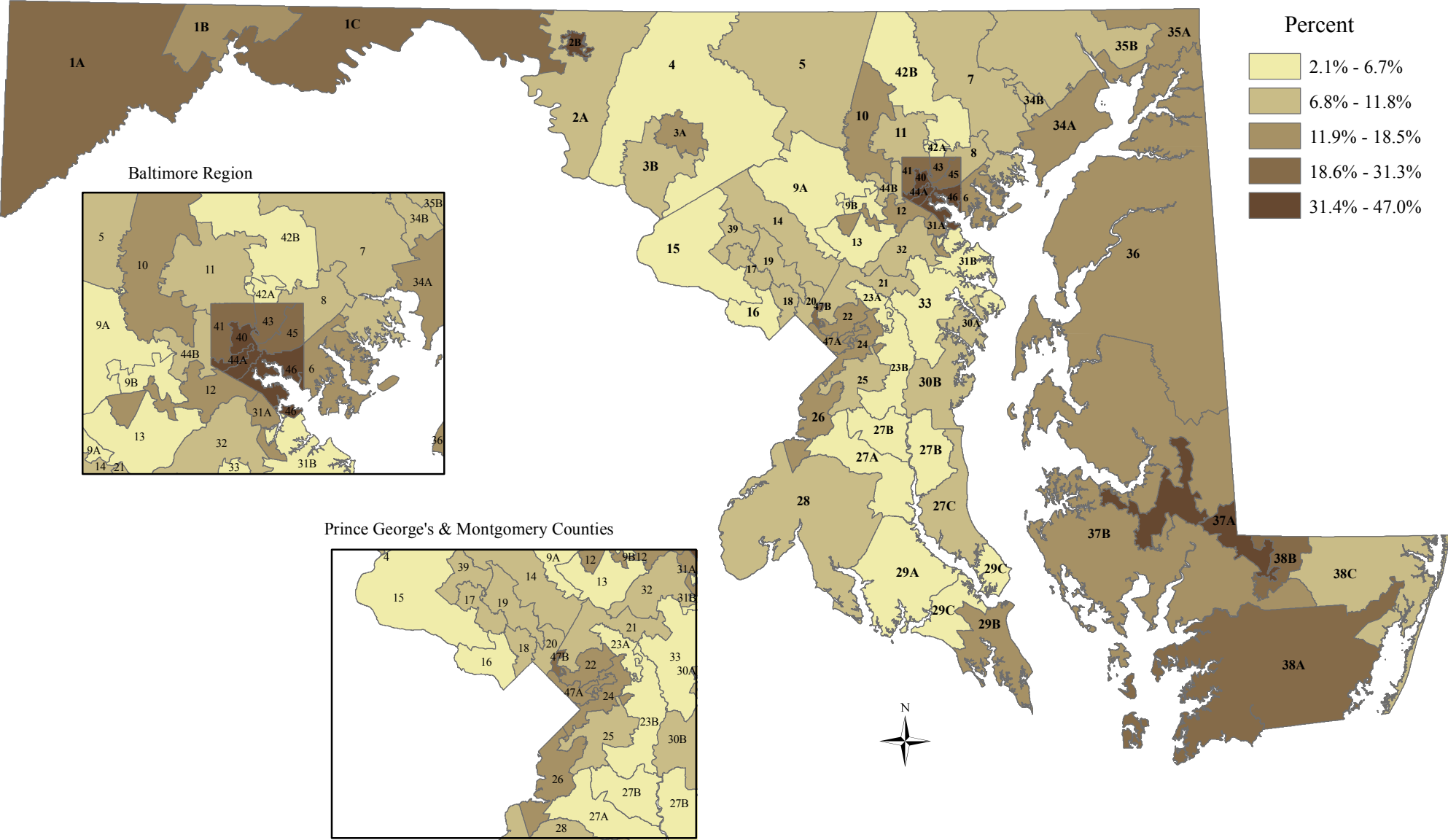
Percent of People in Poverty by Legislative District, 2010 to 2014



Percent of Population Ages 65+ in Poverty by Legislative District, 2010 to 2014

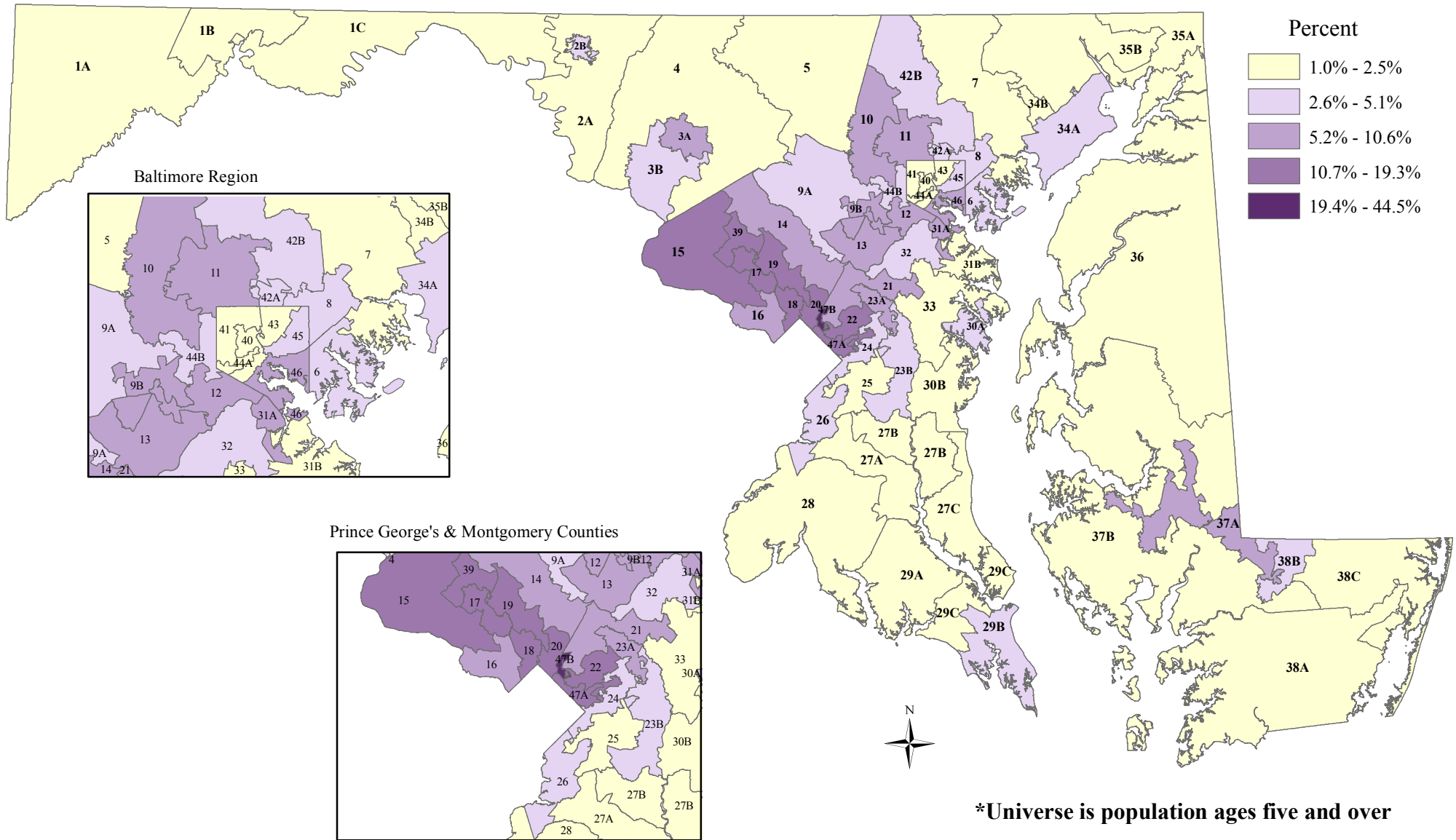


Percent of Families with Related Children Less Than 18 Years Old in Poverty by Legislative District, 2010 to 2014

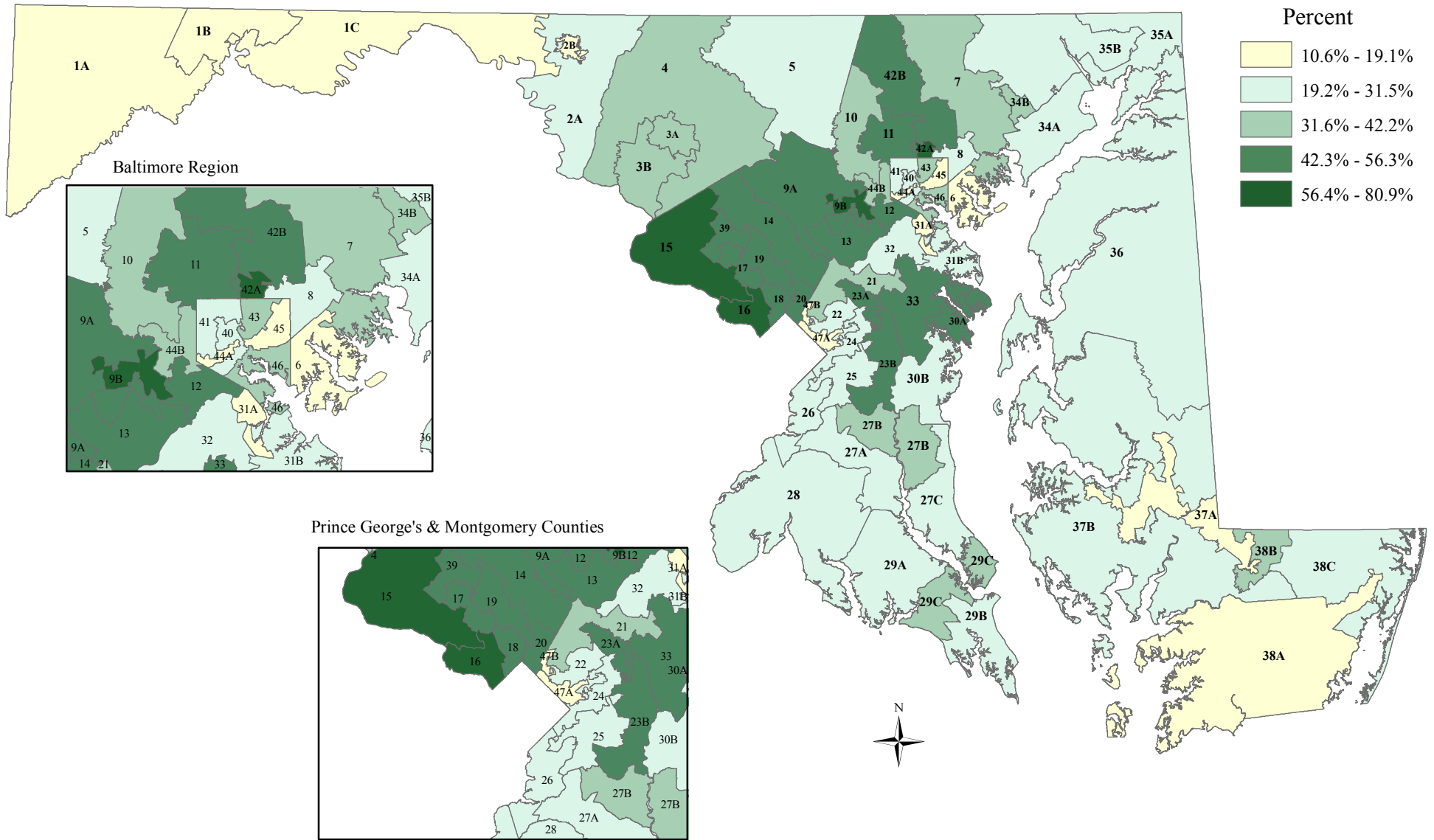


Map prepared by the Maryland Department of Planning, Projections and State Data
 Source: U.S. Census Bureau, ACS 2010 -2014, December 2015

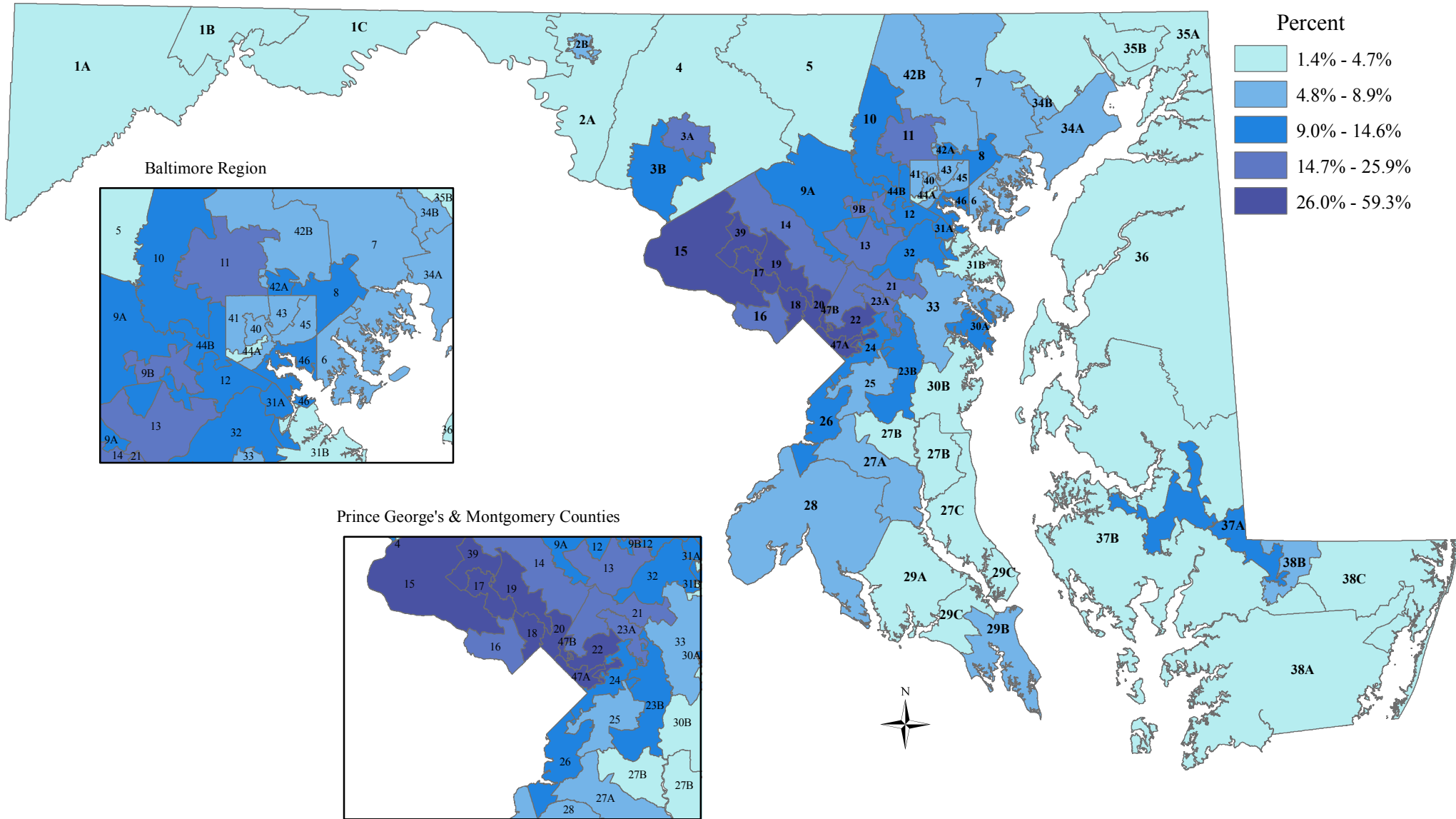
Percent of Population Who Speak English Less Than Very Well by Legislative District, 2010 to 2014*



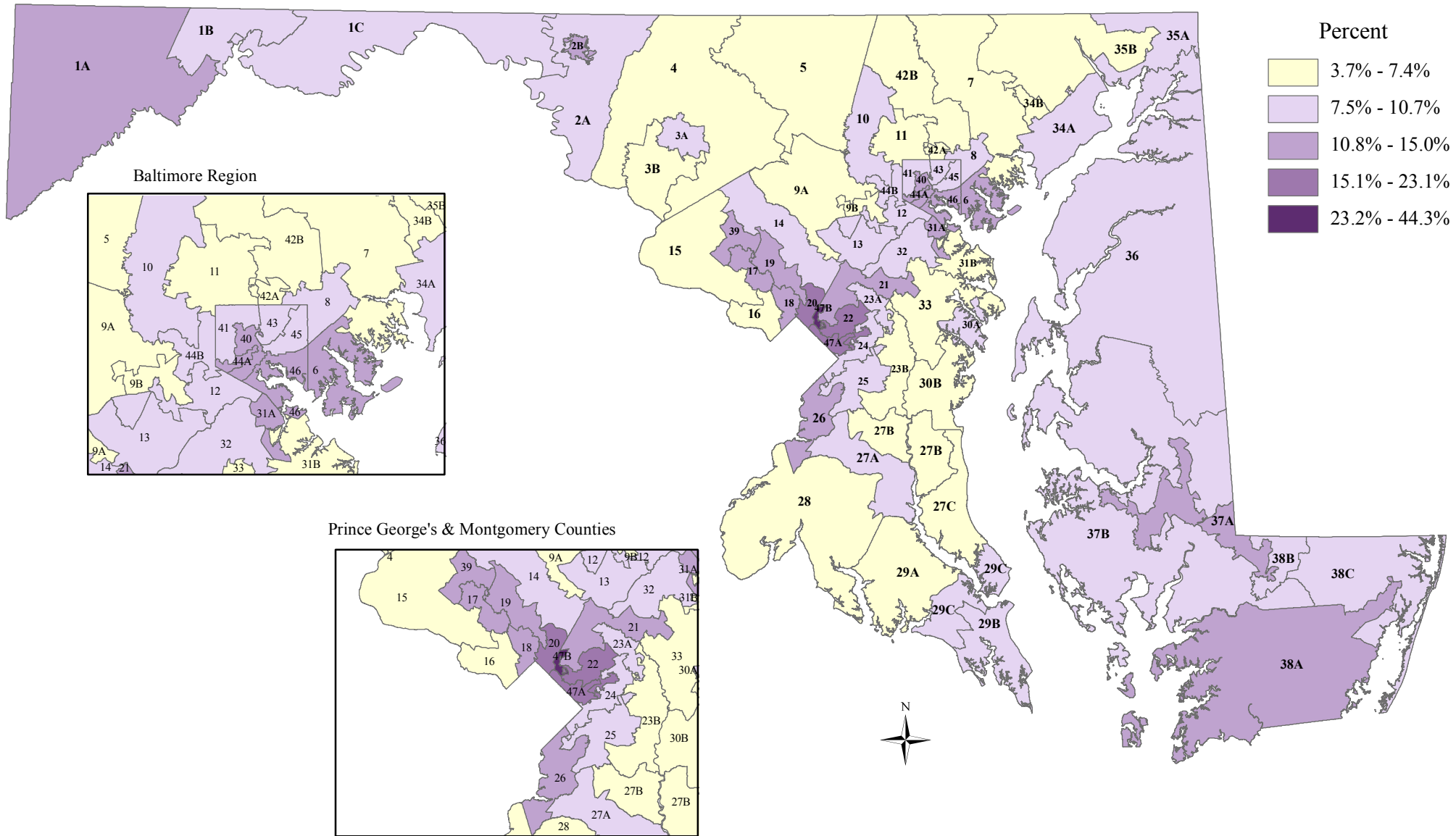
Percent of the Population Ages 25+ With a Bachelor's Degree or Higher by Legislative District, 2010 to 2014



Percent Foreign Born by Legislative District, 2010 to 2014



Percent of Population without Health Insurance by Legislative District, 2010 to 2014



Unemployment Rate by Legislative District, 2010 to 2014

