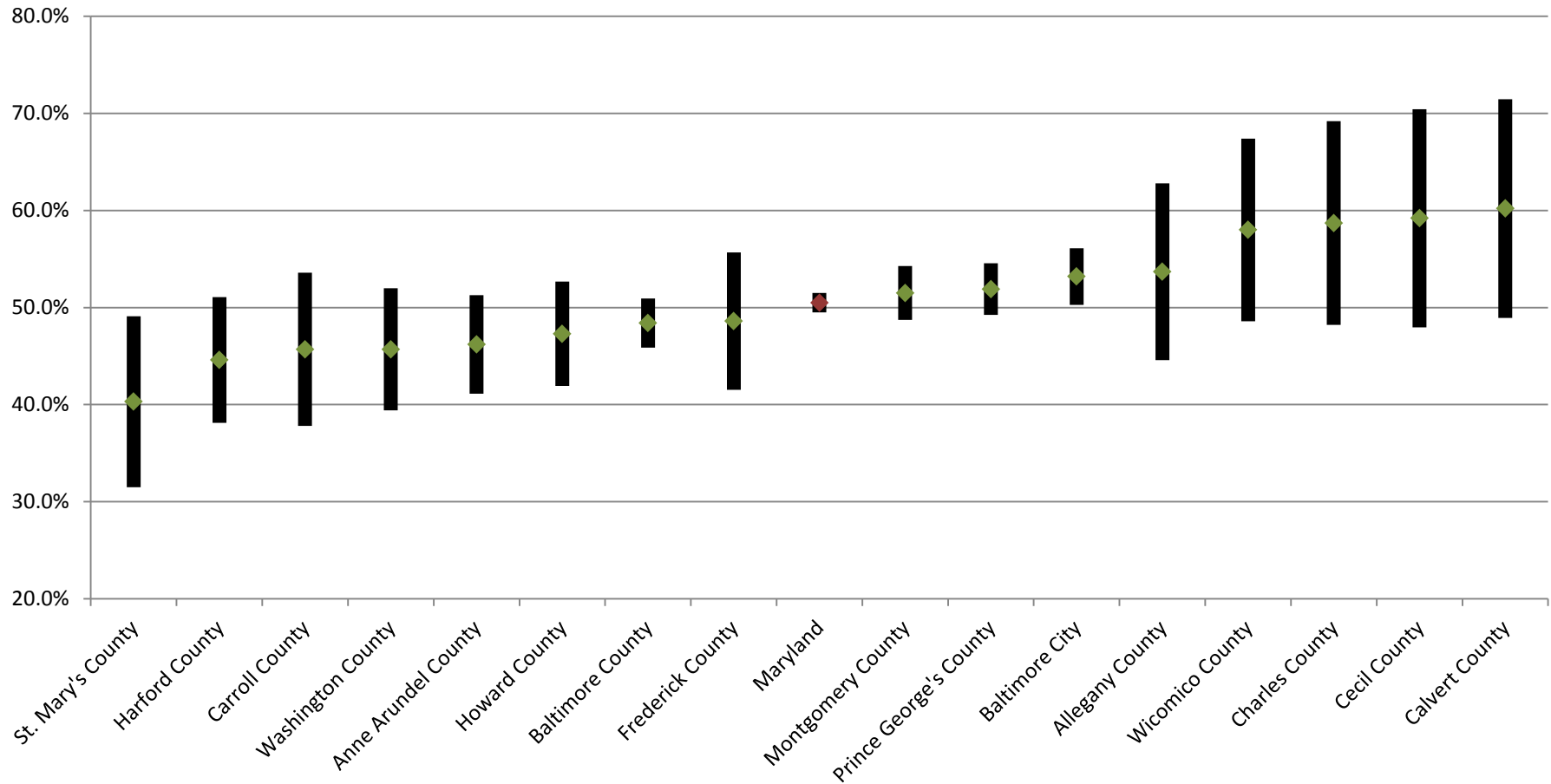


## Percent of Renter-Occupied Units Spending 30 Percent or More of Household Income on Rent and Utilities in 2012 in Maryland and its Jurisdictions (with Margin of Error)



\* Apparent differences may not be statistically significant at the 90 percent confidence interval.

Prepared by the Maryland Department of Planning, from the 2012 ACS for the 16 counties covered (population of 65,000 or more), September 2013