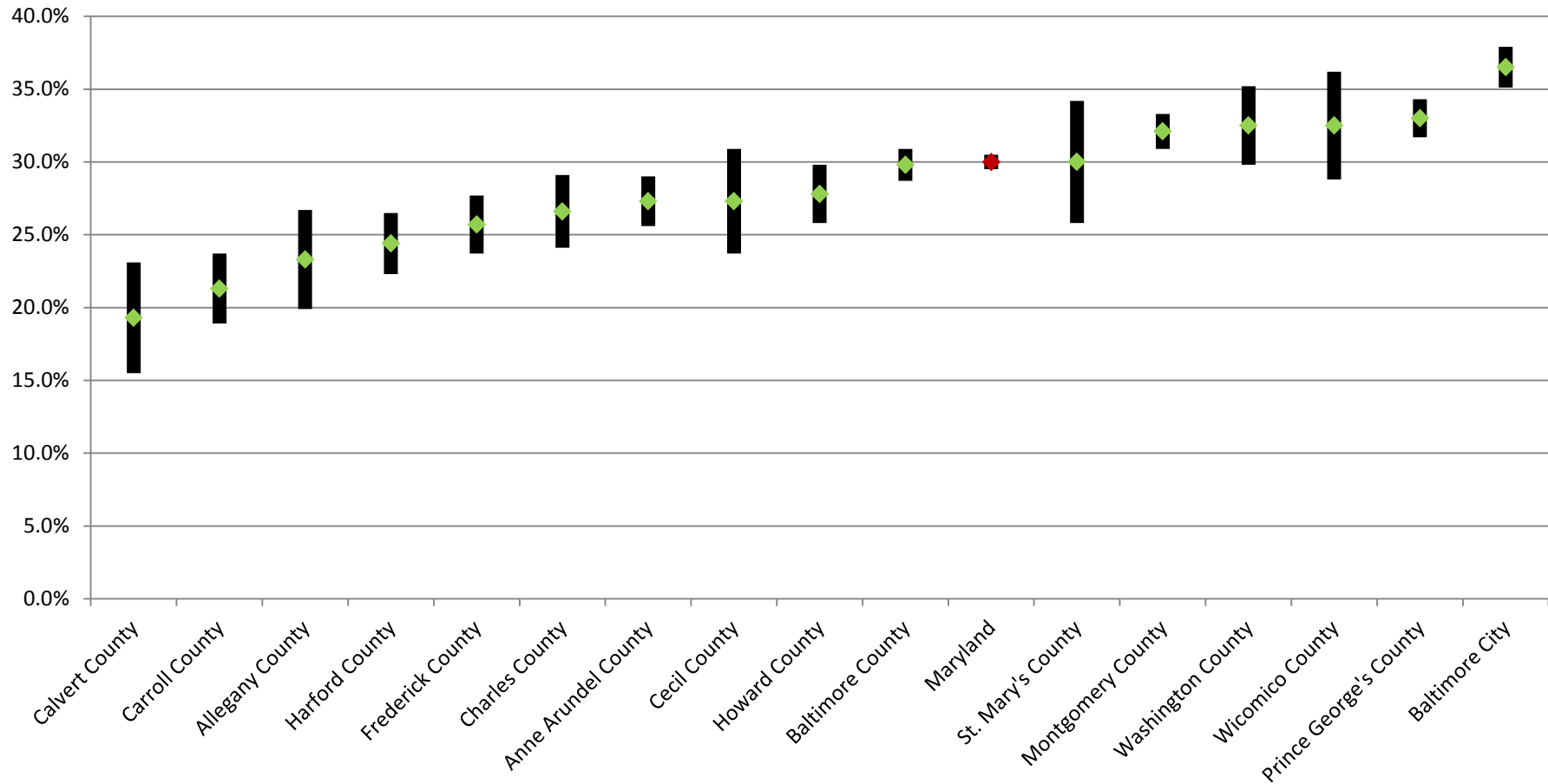


## Percent of Occupied Housing Units That Were Moved Into in 2010 or Later in Maryland and its Jurisdictions, 2013 (with Margin of Error)



\* Apparent differences may not be statistically significant at the 90 percent confidence interval.

Prepared by the Maryland Department of Planning, from the 2013 ACS for the 16 counties covered (population of 65,000 or more), September 2014