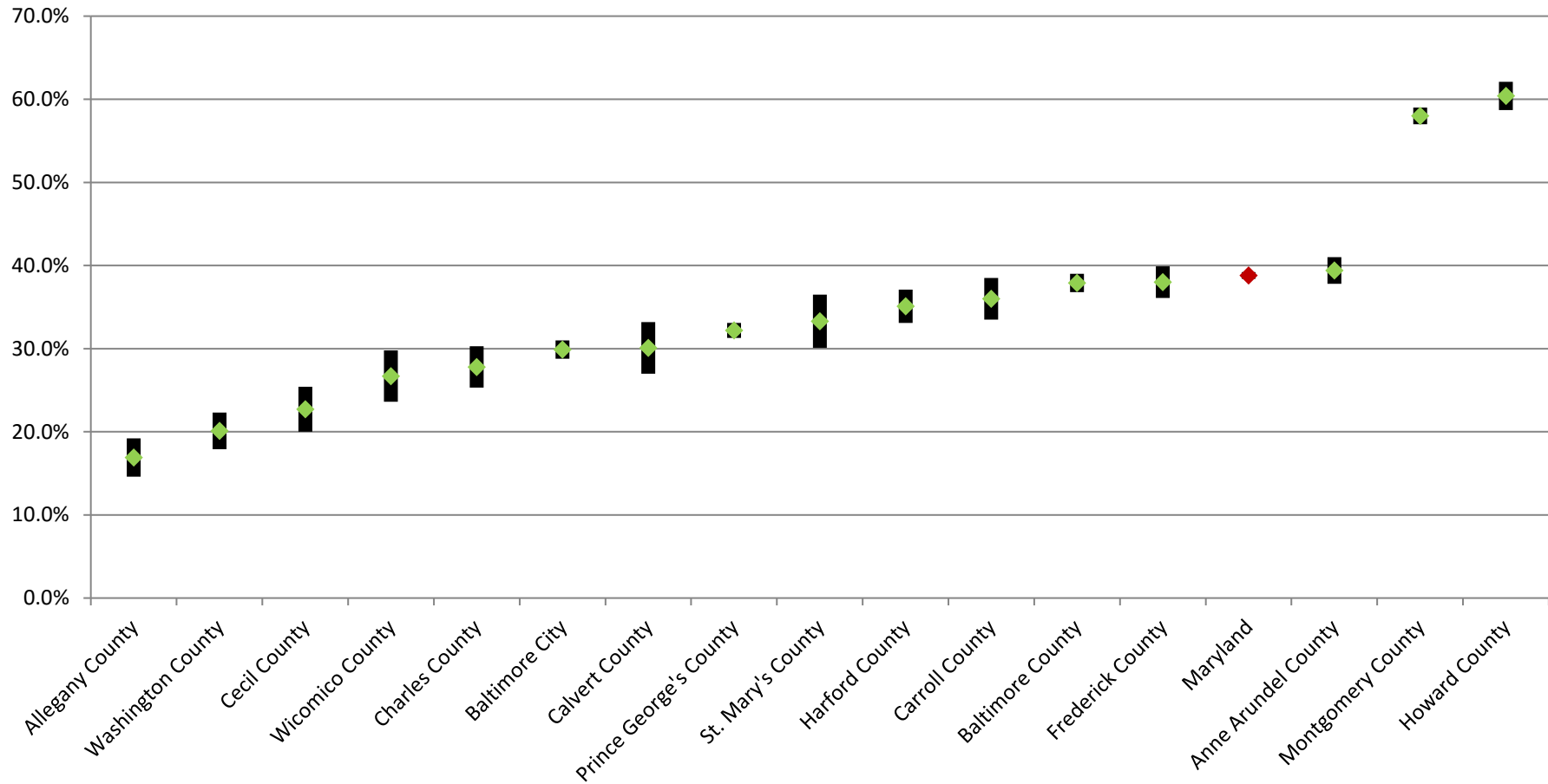


## Percent of People 25 Years and Over Who Have Completed a Bachelor's Degree or higher in Maryland and its Jurisdictions, 2015 (with Margin of Error)



\* Apparent differences may not be statistically significant at the 90 percent confidence interval.

Prepared by the Maryland Department of Planning, from the 2015 ACS for the 16 counties covered (population of 65,000 or more), September 2016