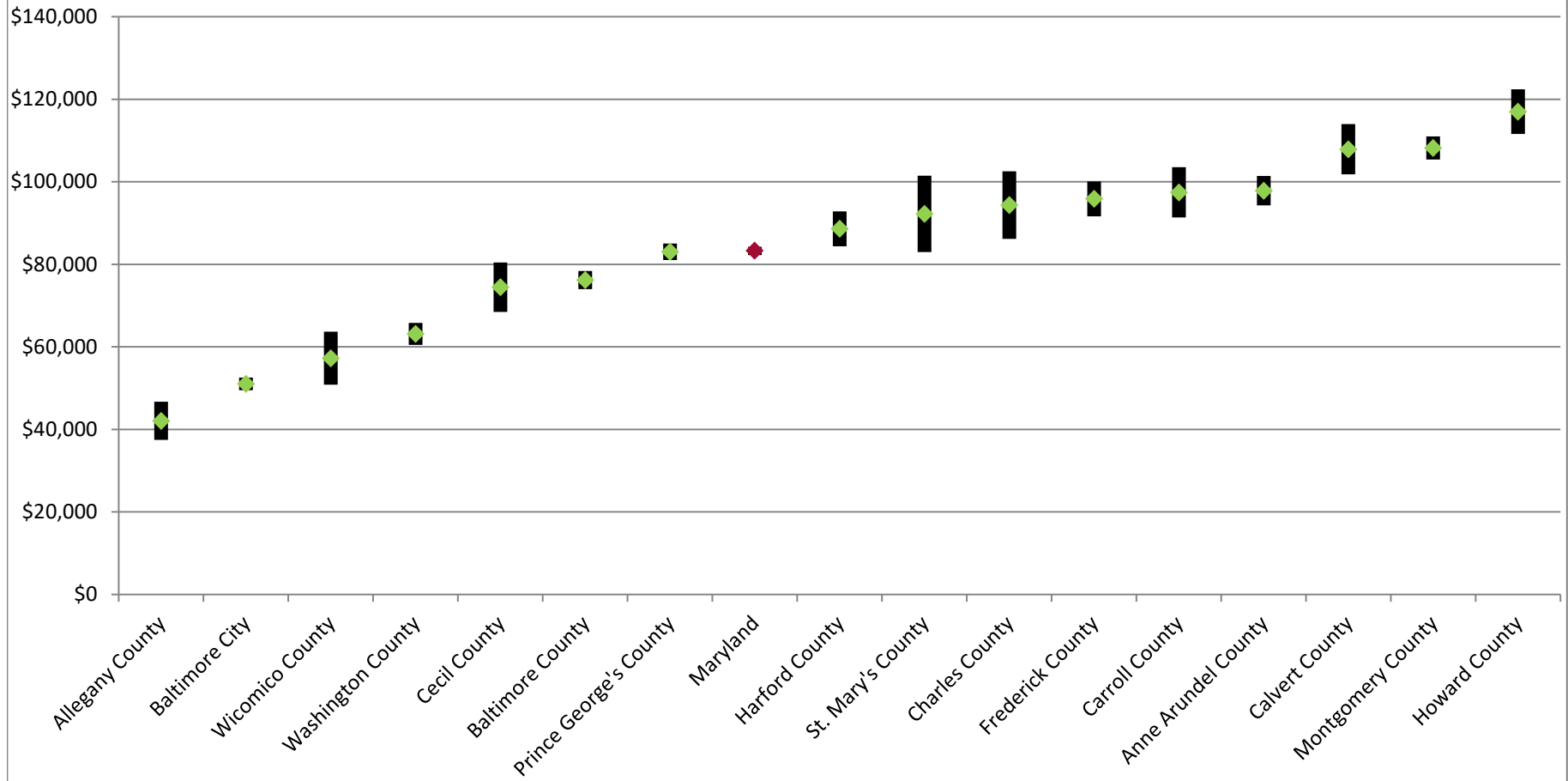


Median Household Income in Maryland and its Jurisdictions, 2018 (In 2018 Inflation-Adjusted Dollars, with Margin of Error)



* Apparent differences may not be statistically significant at the 90 percent confidence interval.

Prepared by the Maryland Department of Planning, from the 2018 ACS for the 16 counties covered (population of 65,000 or more), September 2019