

POPULATION CHANGE BY RACE/HISPANIC ORIGIN FOR MARYLAND, 2000 TO 2010

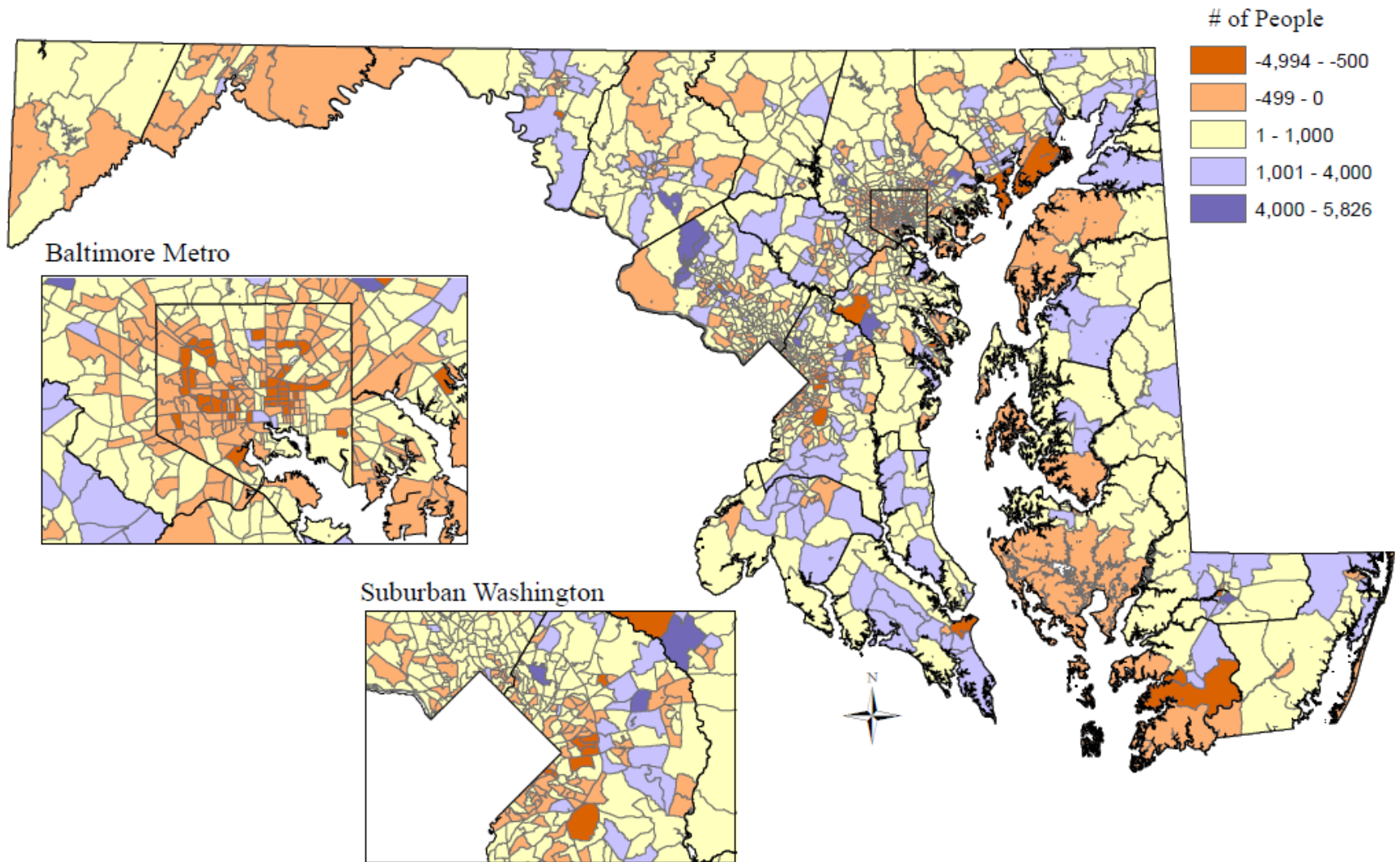


NUMERIC CHANGE

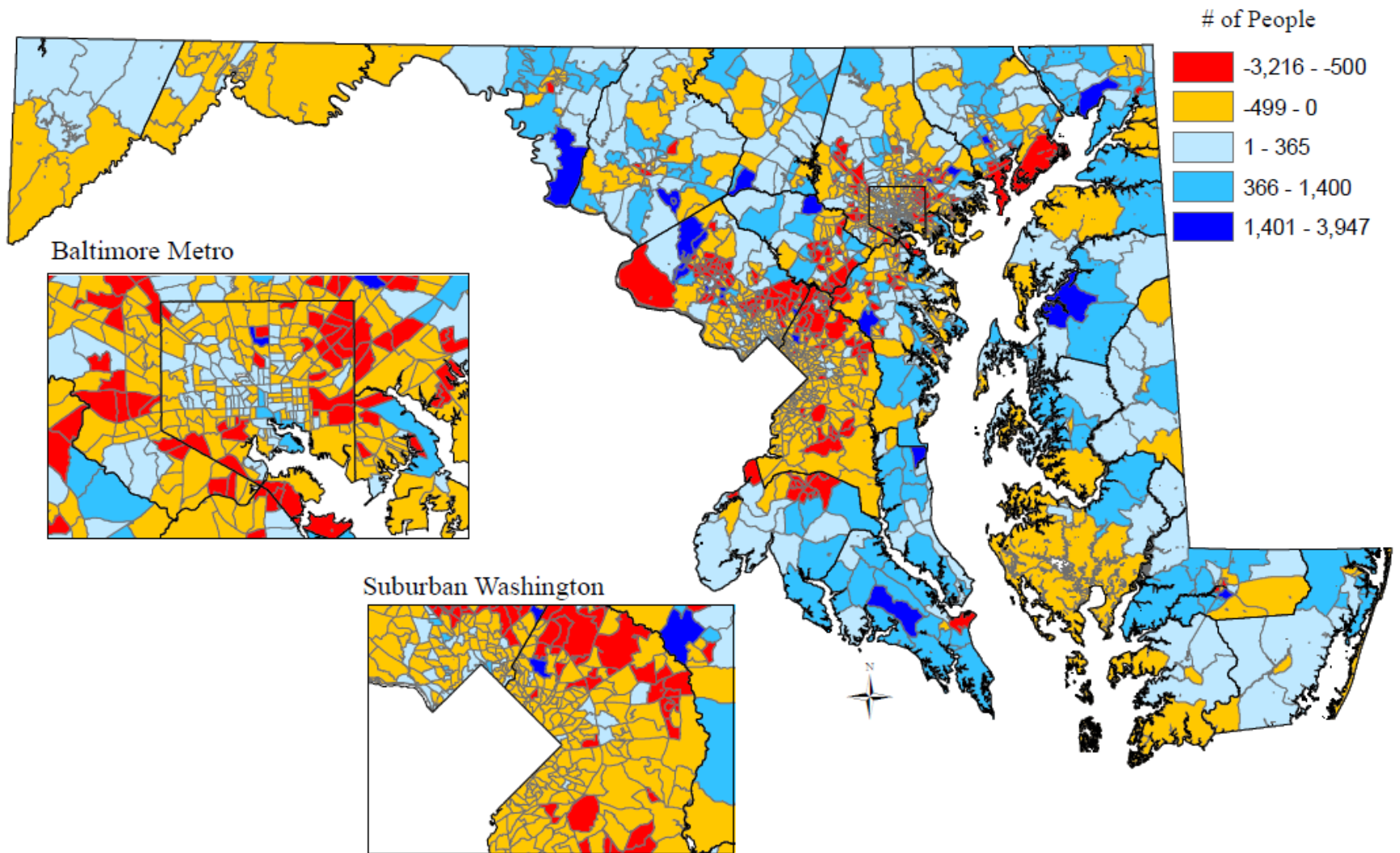


Sustainable ____ Attainable

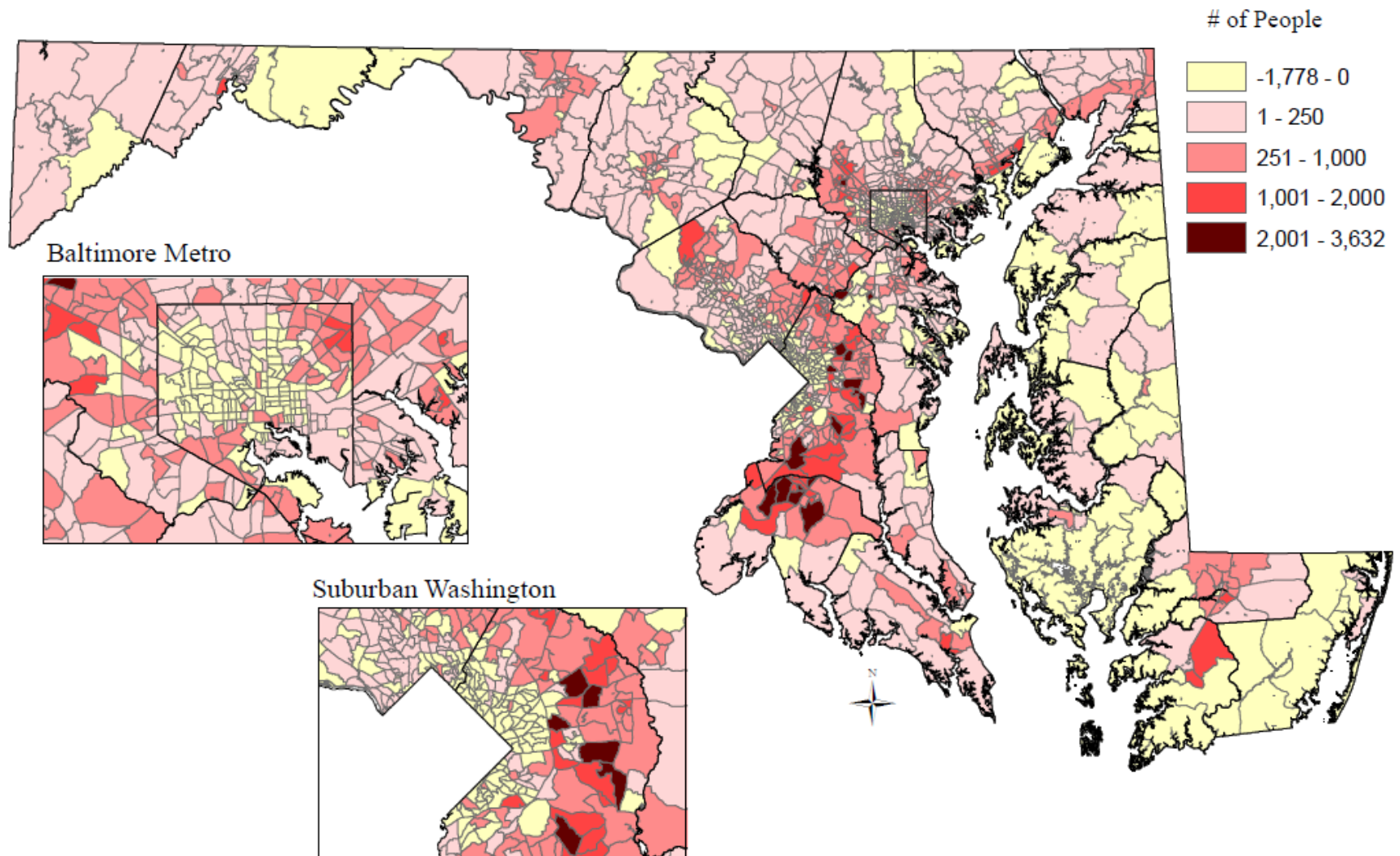
Change in Total Population in Maryland by Census Tract, 2000 to 2010



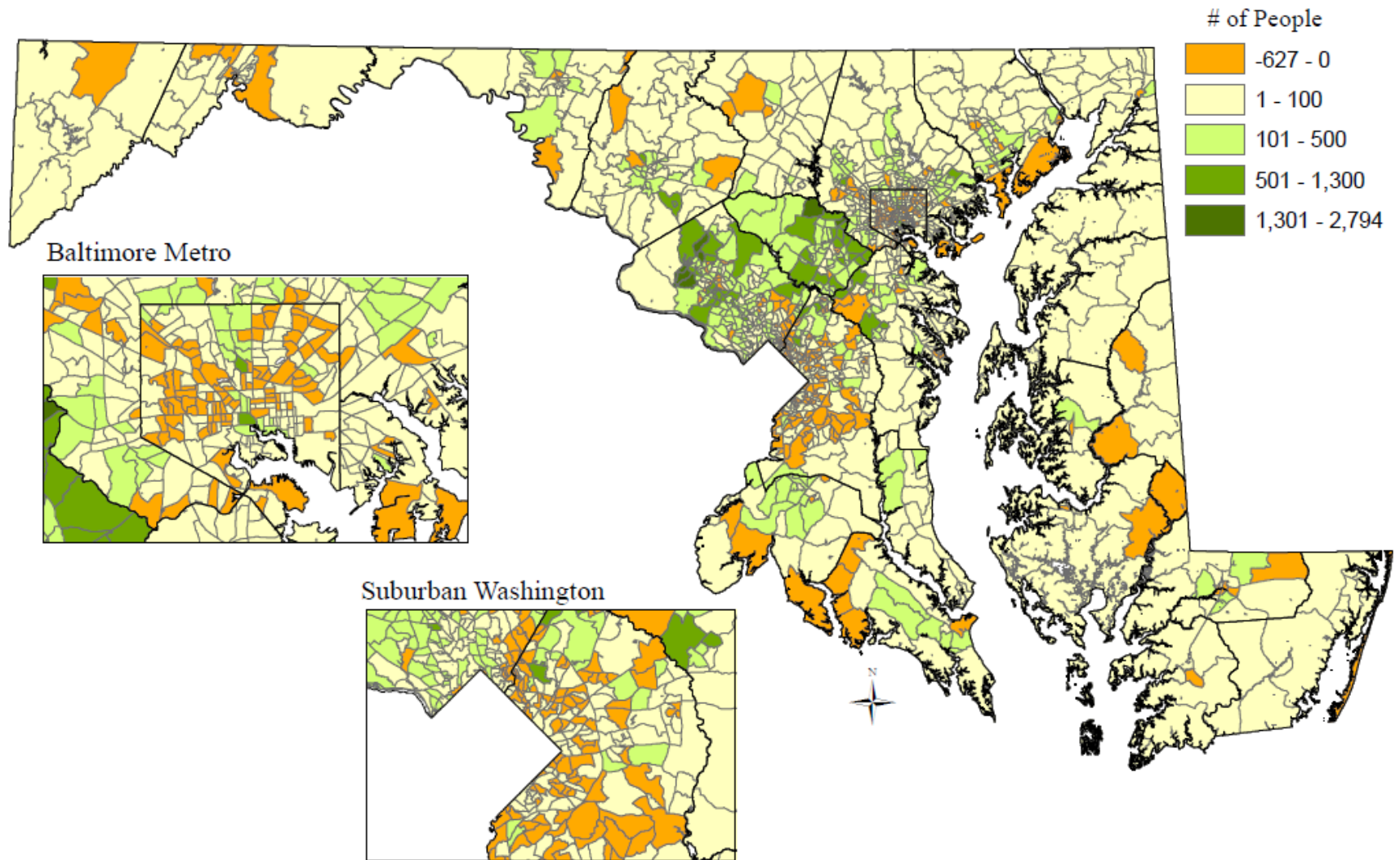
Change in Non-Hispanic White Population in Maryland by Census Tract, 2000 to 2010



Change in Non-Hispanic African American Population in Maryland by Census Tract, 2000 to 2010



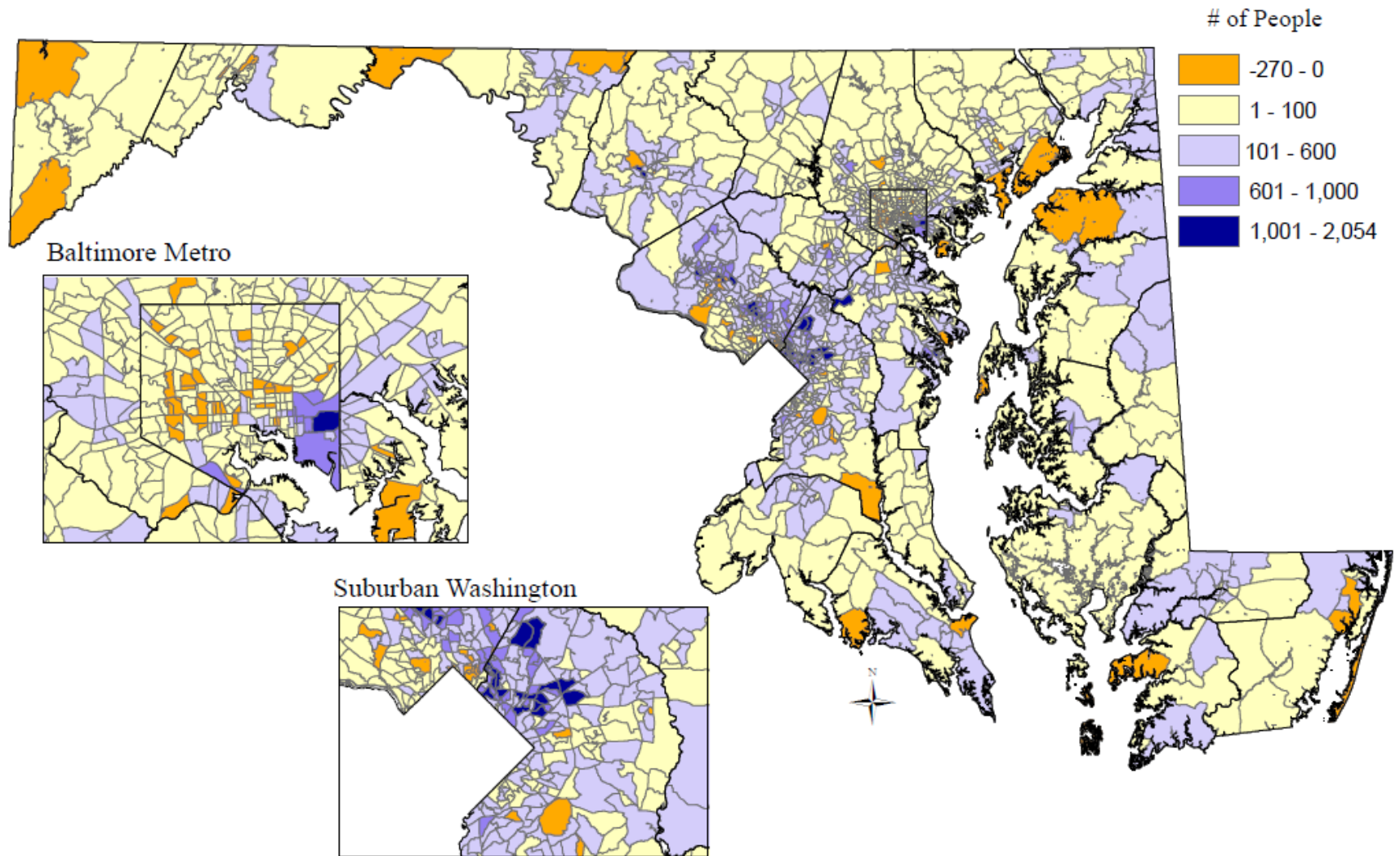
Change in Asian Population in Maryland by Census Tract, 2000 to 2010



Source: US2010 Project (<http://www.s4.brown.edu/us2010/Researcher/Bridging.htm>)

Map prepared by the Maryland Department of Planning

Change in Hispanic Population in Maryland by Census Tract, 2000 to 2010



SHARE AND CHANGE IN SHARE

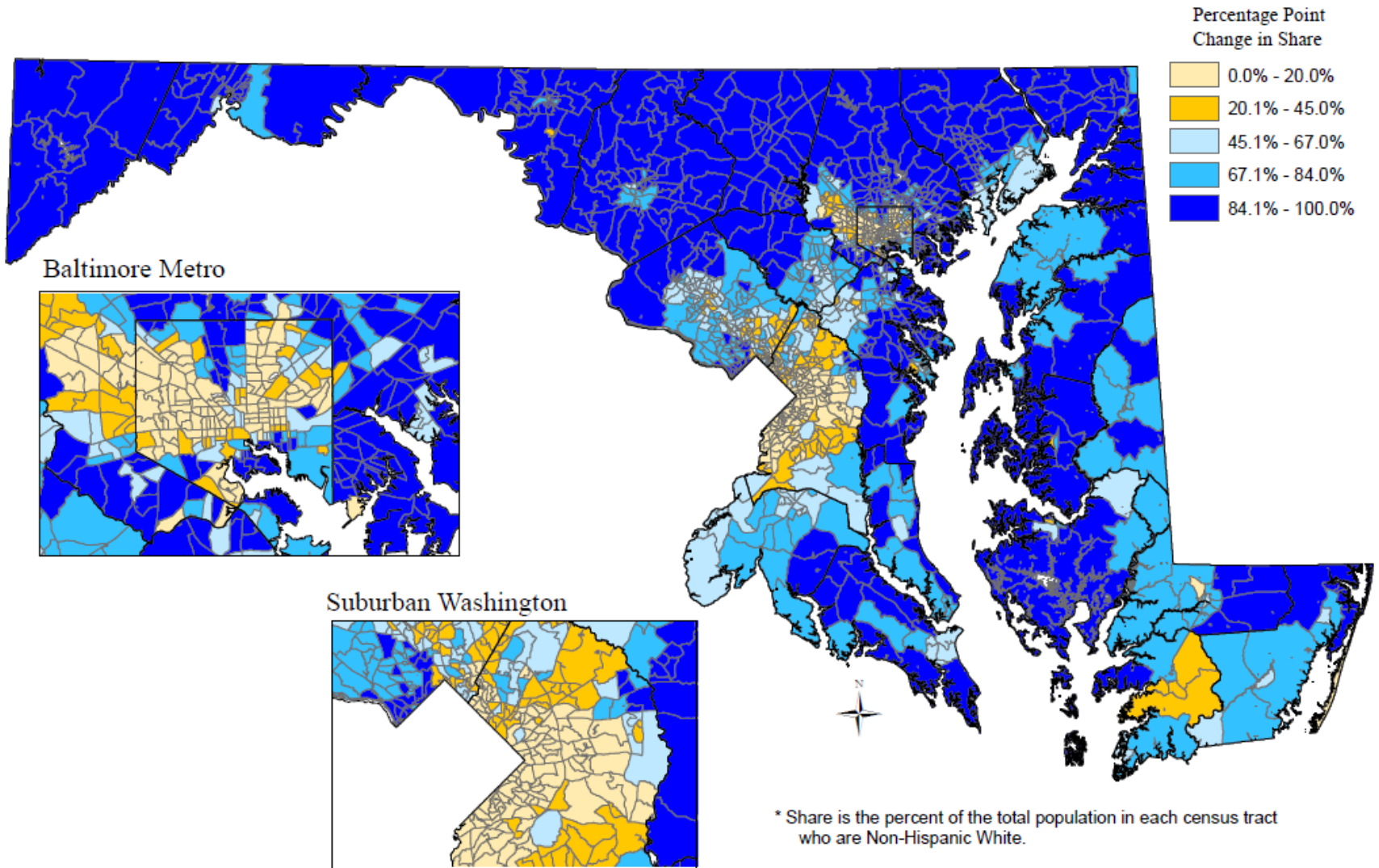


Sustainable ____ Attainable

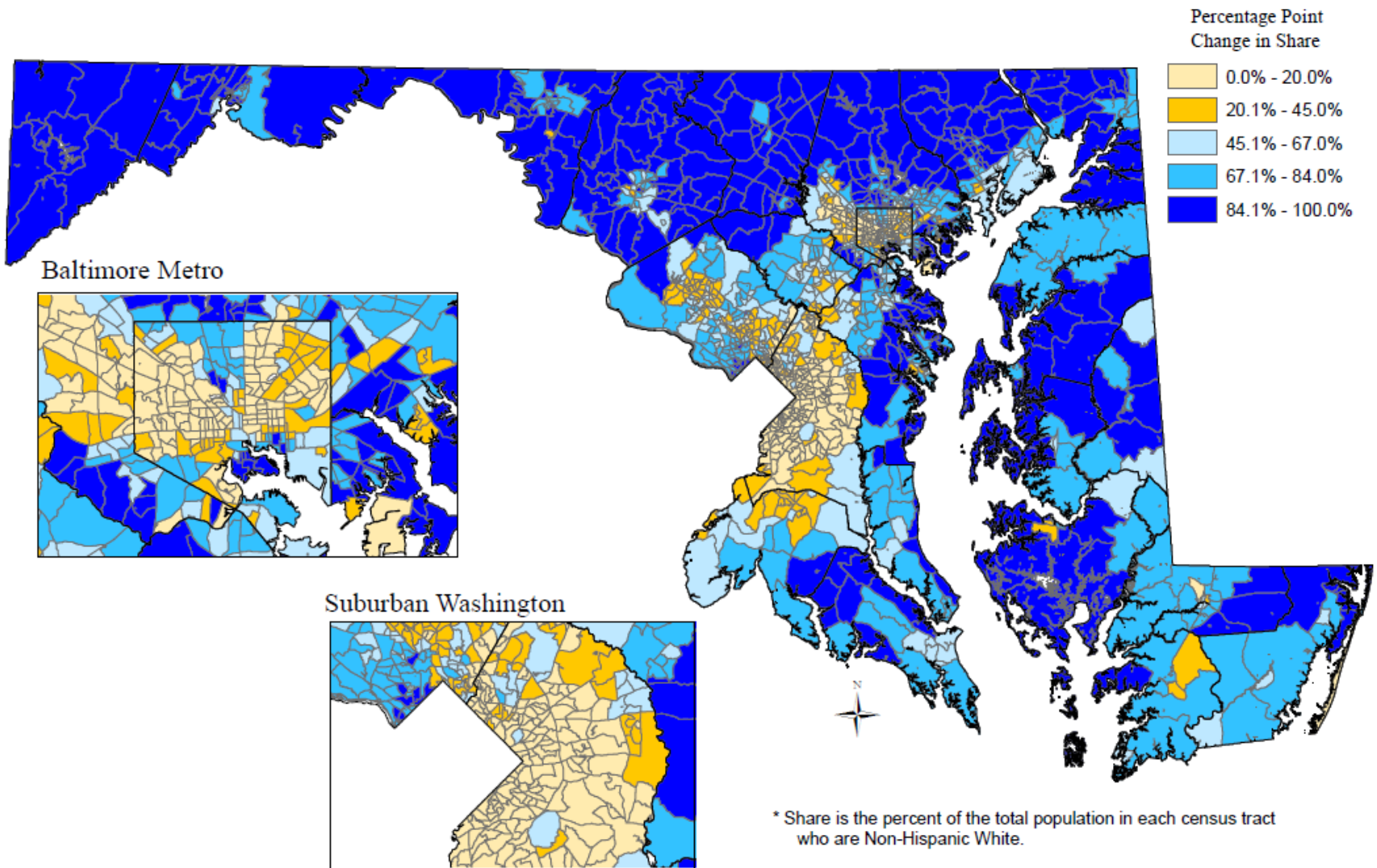
SHARE AND CHANGE IN SHARE

- Non-Hispanic White
- Non-Hispanic African American
- Non-Hispanic Asian
- Hispanic

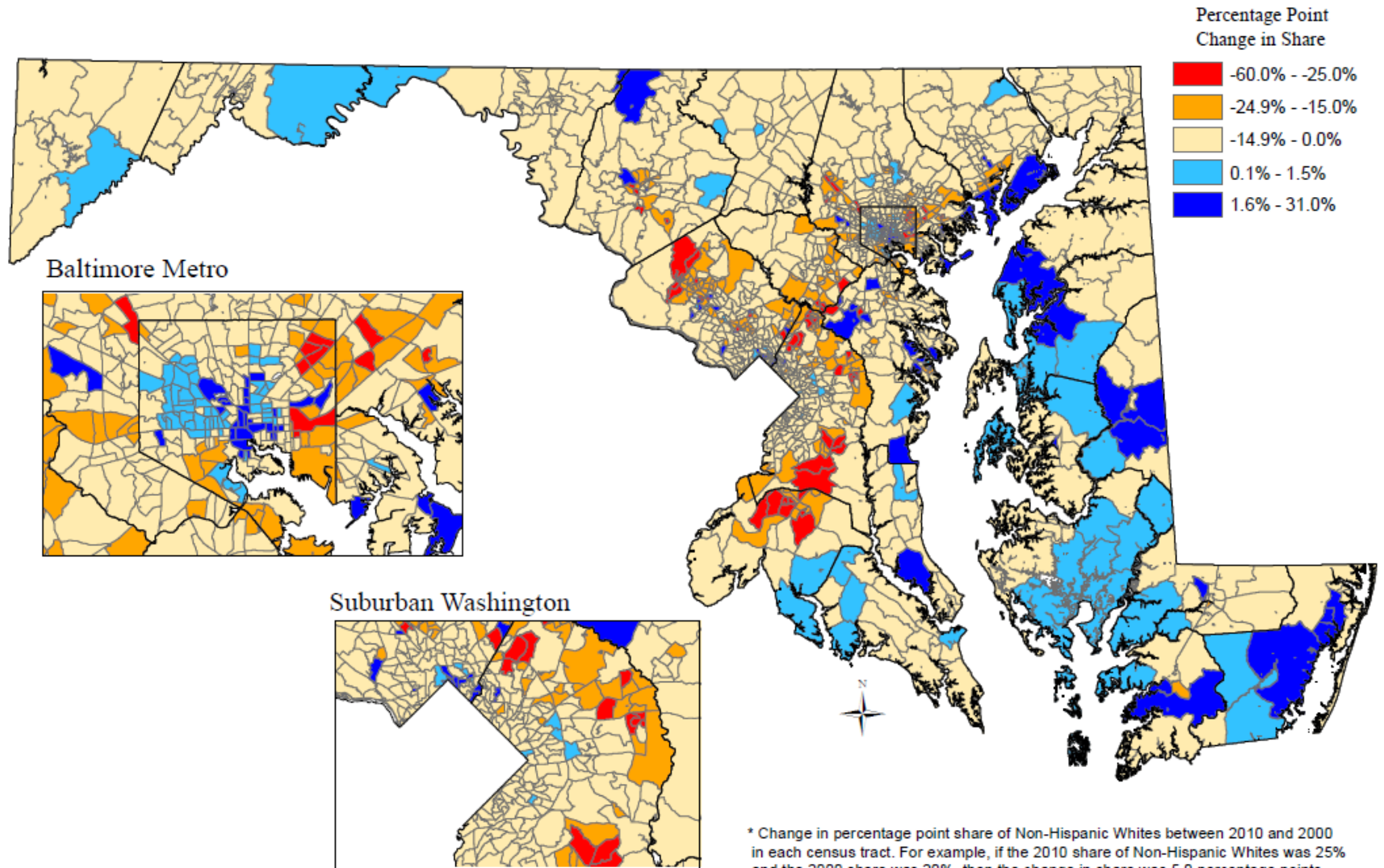
Share of Non-Hispanic White Population in Maryland by Census Tract, 2000*



Share of Non-Hispanic White Population in Maryland by Census Tract, 2010*



Change in Share of Non-Hispanic White Population in Maryland by Census Tract, 2000 - 2010*

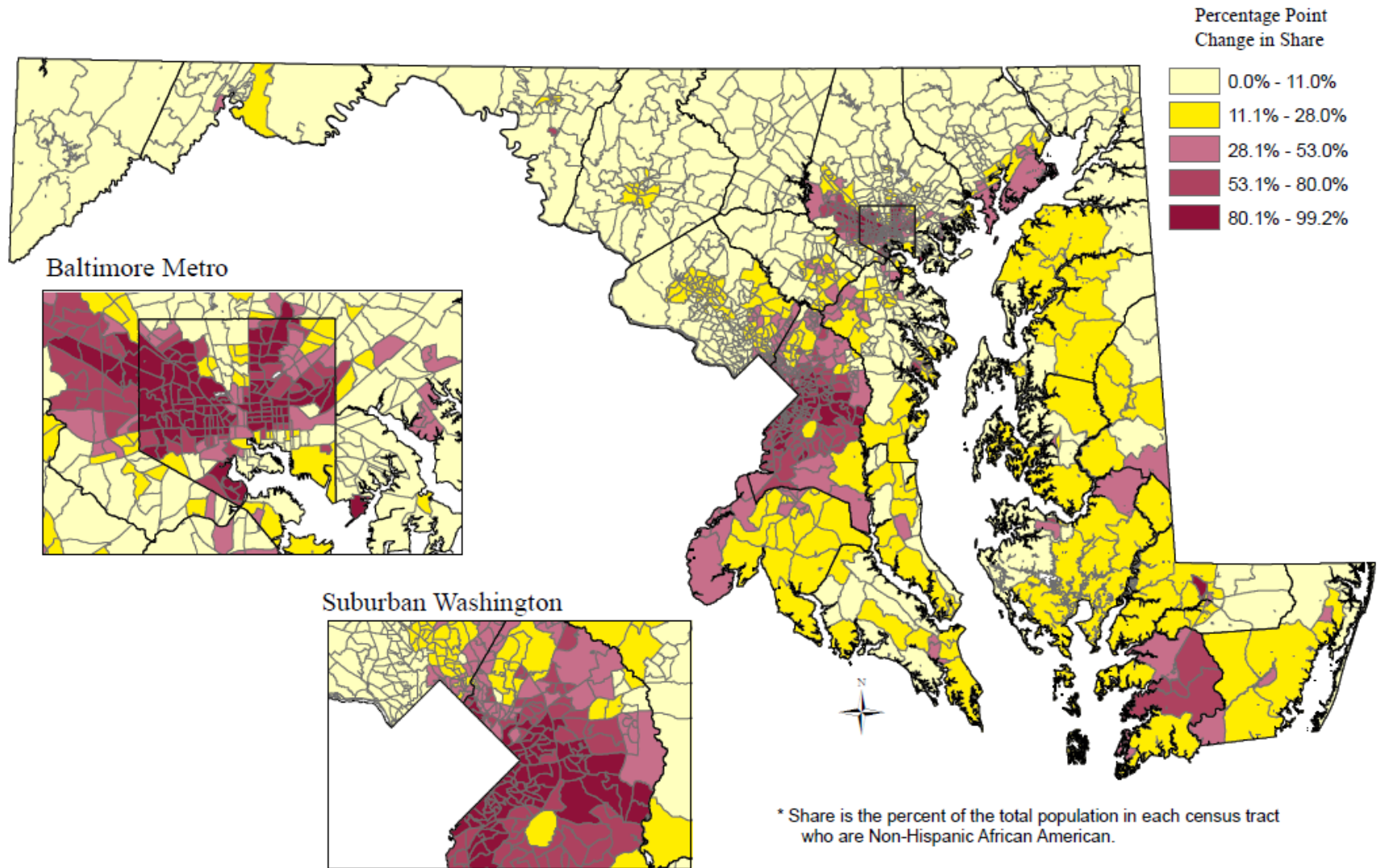


* Change in percentage point share of Non-Hispanic Whites between 2010 and 2000 in each census tract. For example, if the 2010 share of Non-Hispanic Whites was 25% and the 2000 share was 20%, then the change in share was 5.0 percentage points.

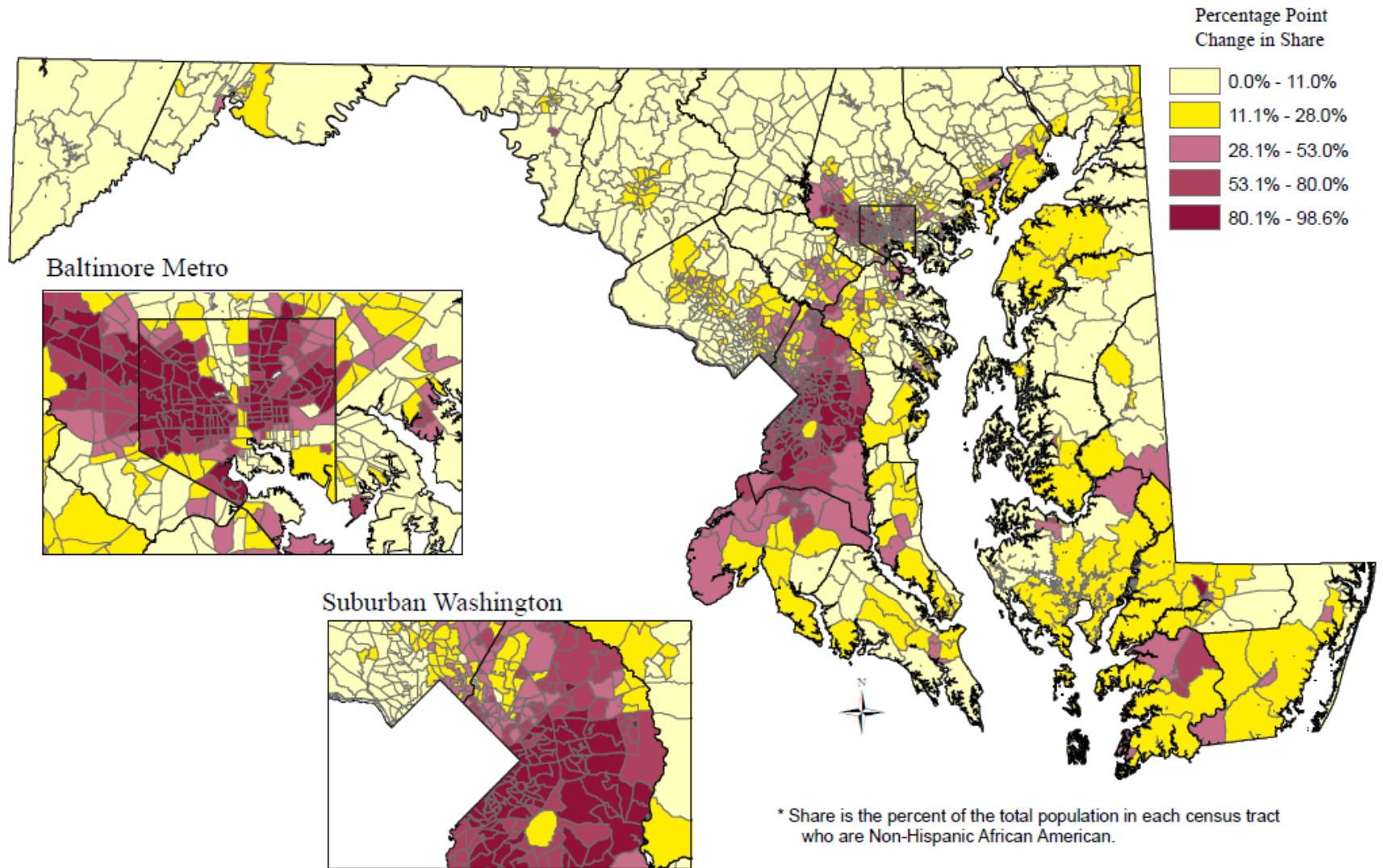
SHARE AND CHANGE IN SHARE

- Non-Hispanic White
- **Non-Hispanic African American**
- Non-Hispanic Asian
- Hispanic

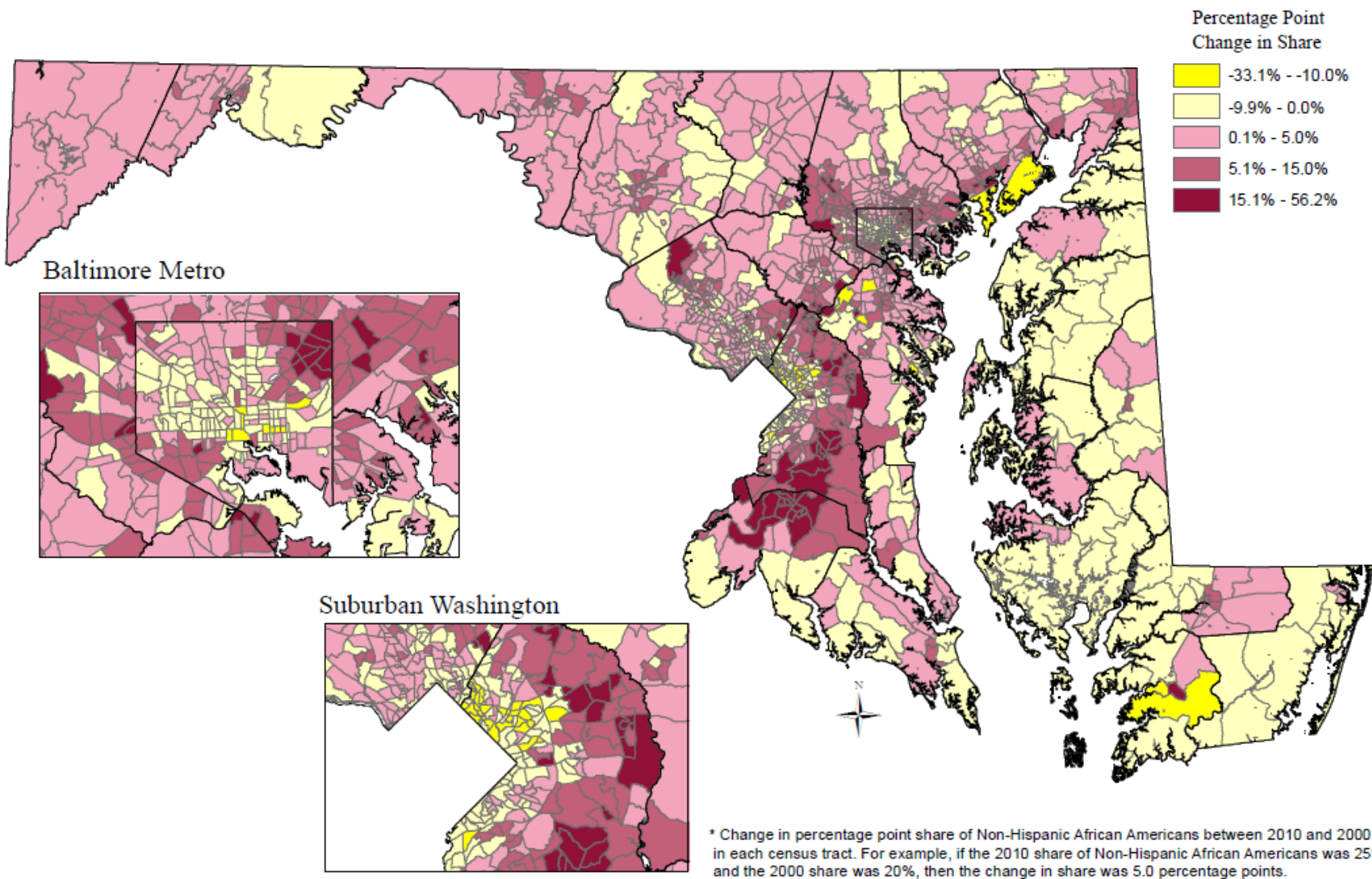
Share of Non-Hispanic African American Population in Maryland by Census Tract, 2000*



Share of Non-Hispanic African American Population in Maryland by Census Tract, 2010*



Change in Share of Non-Hispanic African American Population in Maryland by Census Tract, 2000 - 2010*

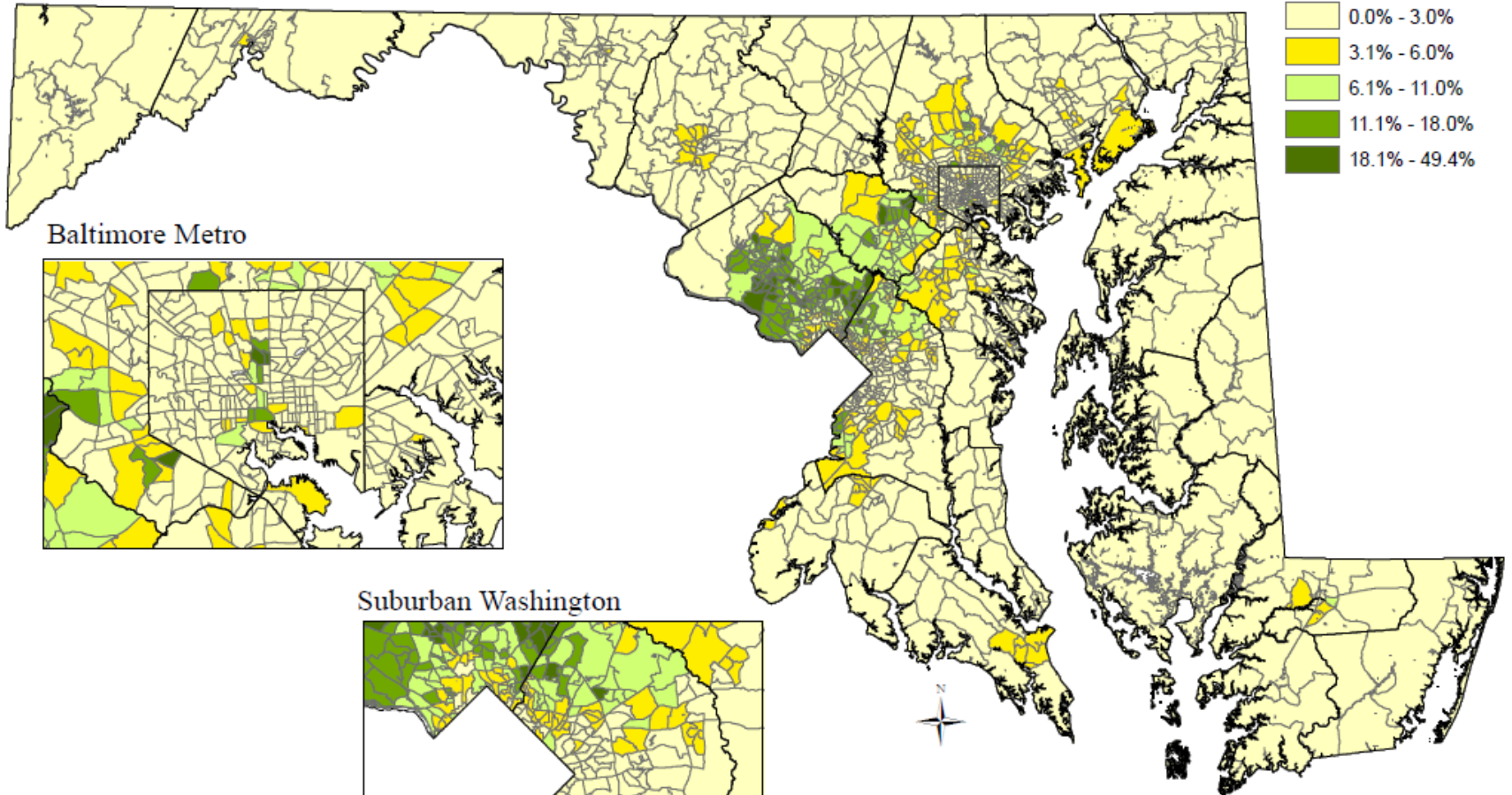
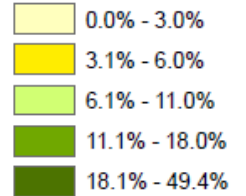


SHARE AND CHANGE IN SHARE

- Non-Hispanic White
- Non-Hispanic African American
- **Non-Hispanic Asian**
- Hispanic

Share of Asian Population in Maryland by Census Tract, 2000*

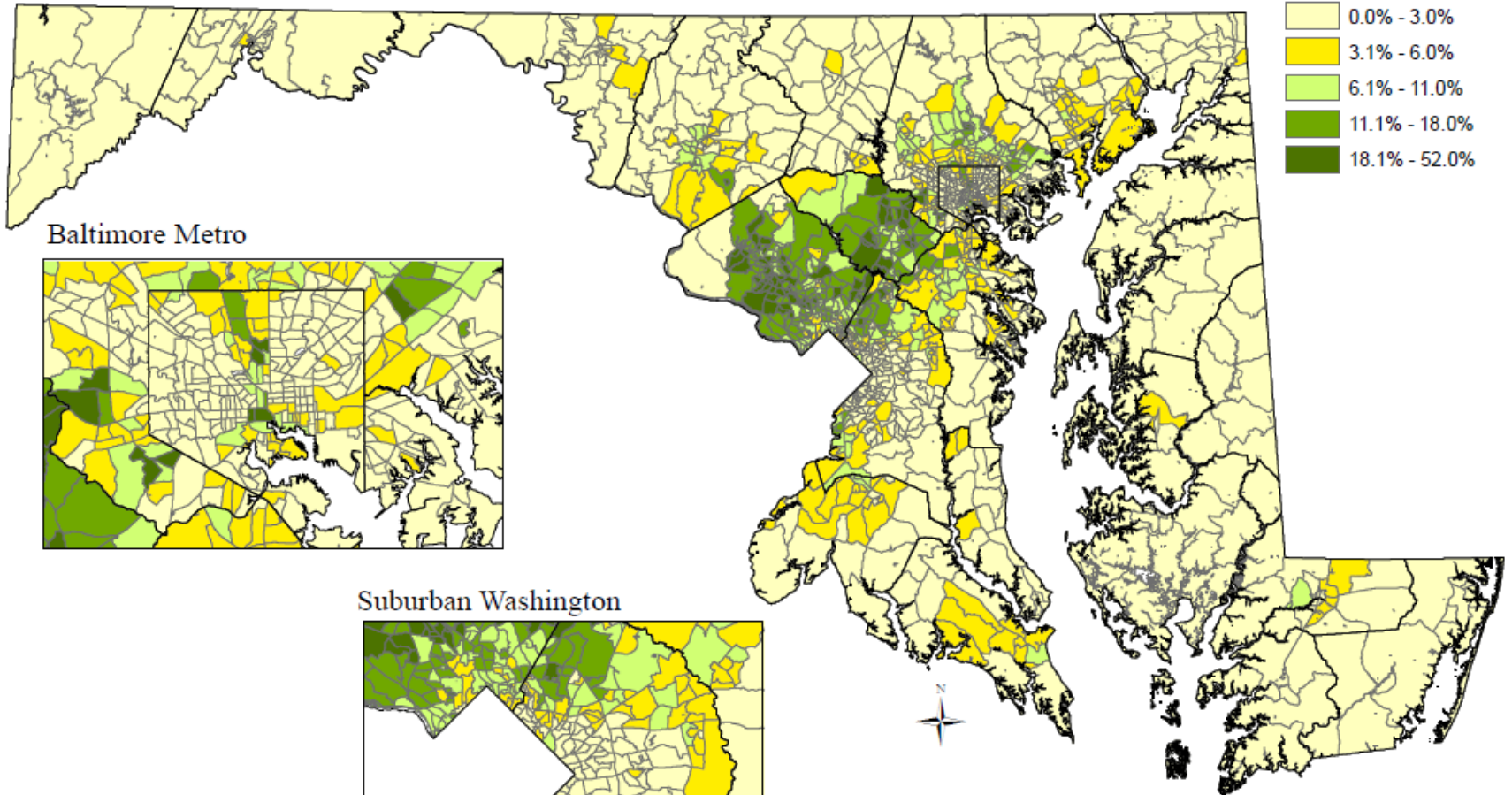
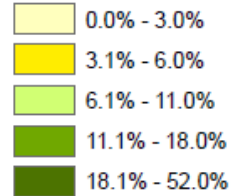
Percentage Point Share



* Share is the percent of the total population in each census tract who are Asian.

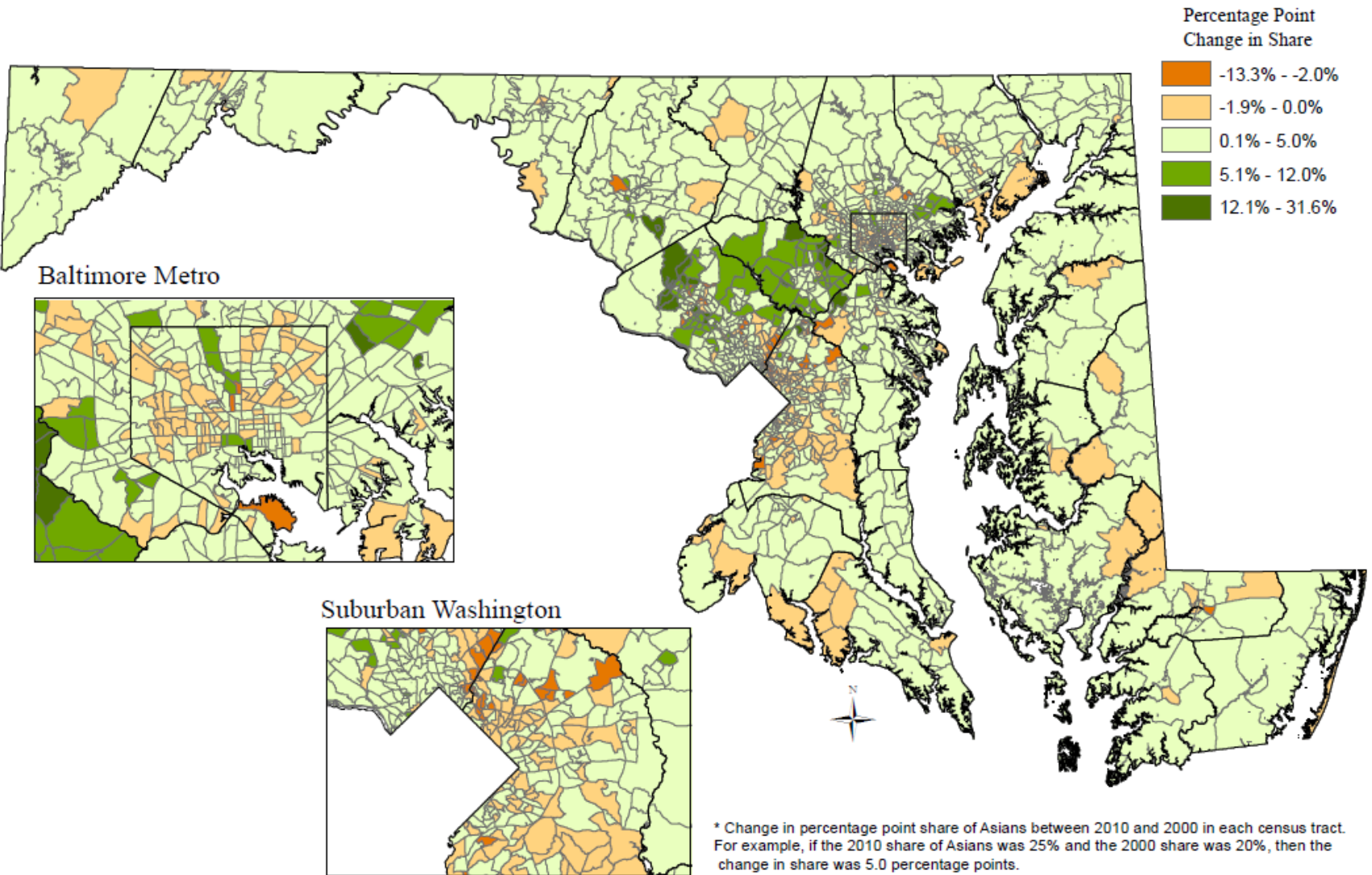
Share of Asian Population in Maryland by Census Tract, 2010*

Percentage Point Share



* Share is the percent of the total population in each census tract who are Asian.

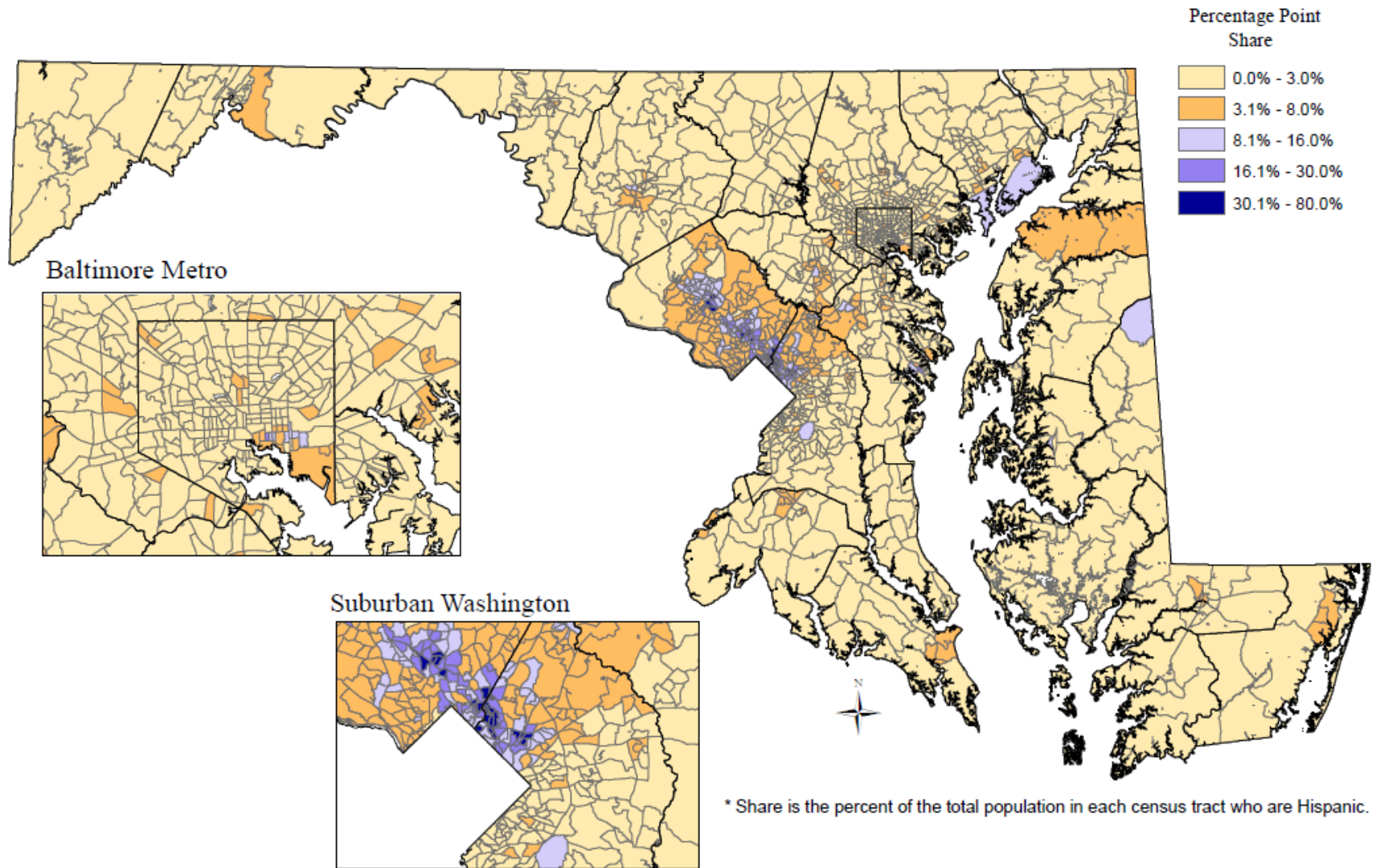
Change in Share of Asian Population in Maryland by Census Tract, 2000 - 2010*



SHARE AND CHANGE IN SHARE

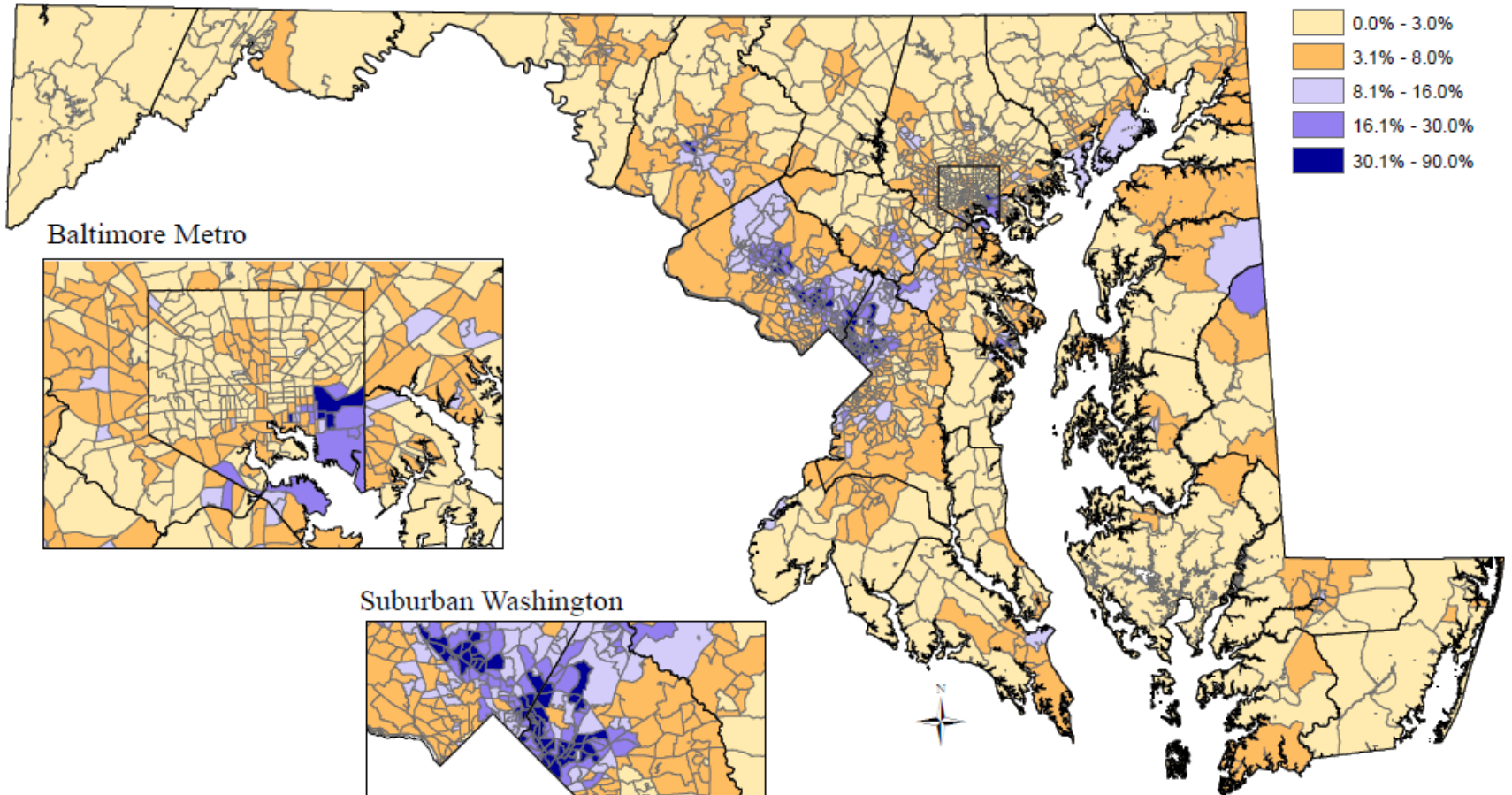
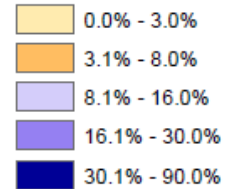
- Non-Hispanic White
- Non-Hispanic African American
- Non-Hispanic Asian
- **Hispanic**

Share of Hispanic Population in Maryland by Census Tract, 2000*



Share of Hispanic Population in Maryland by Census Tract, 2010*

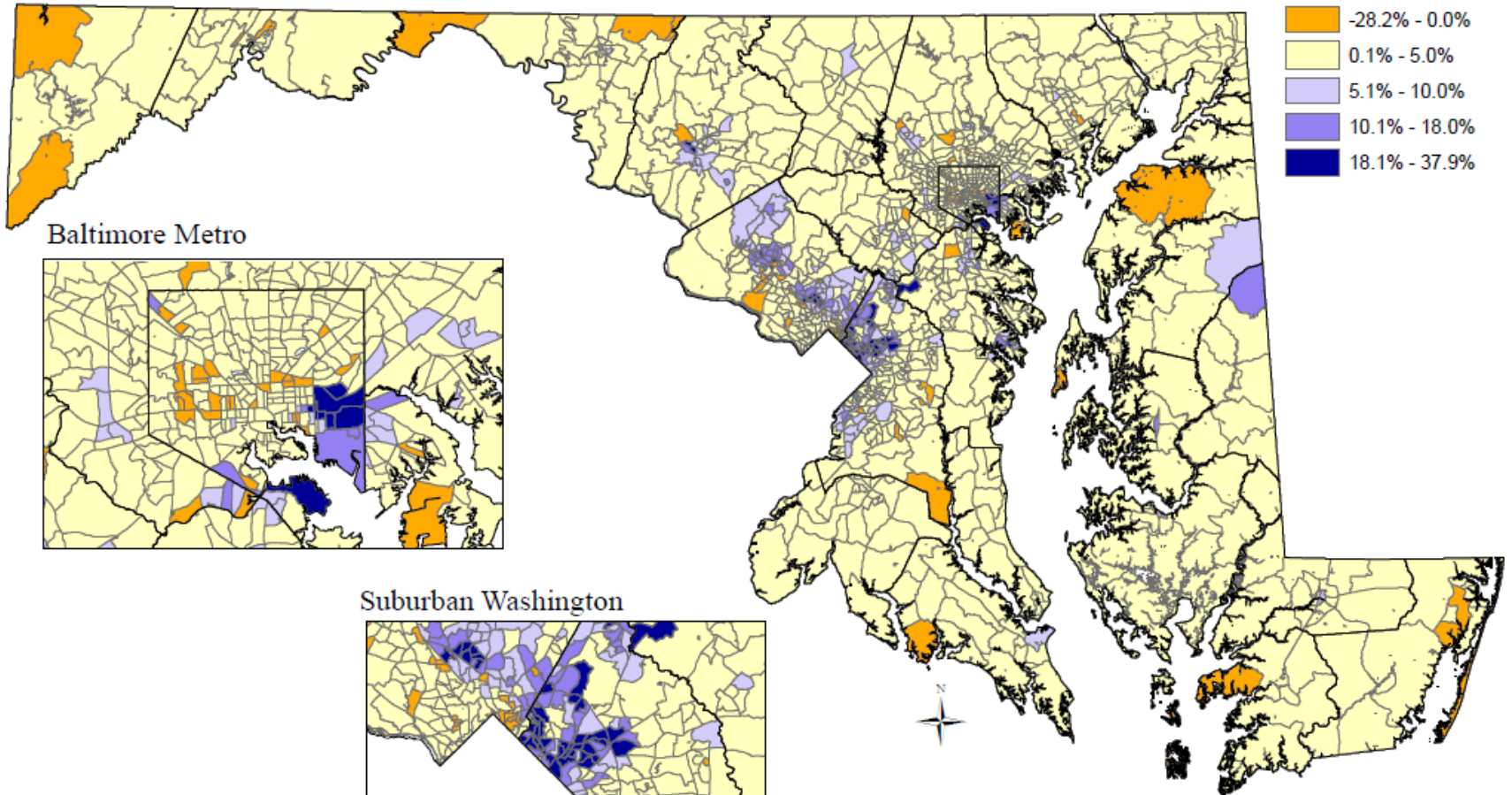
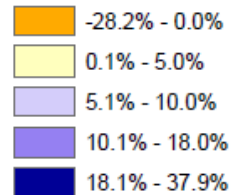
Percentage Point Share



* Share is the percent of the total population in each census tract who are Hispanic.

Change in Share of Hispanic Population in Maryland by Census Tract, 2000 - 2010*

Percentage Point
Change in Share



* Change in percentage point share of Hispanics between 2010 and 2000 in each census tract. For example, if the 2010 share of Hispanics was 25% and the 2000 share was 20%, then the change in share was 5.0 percentage points.