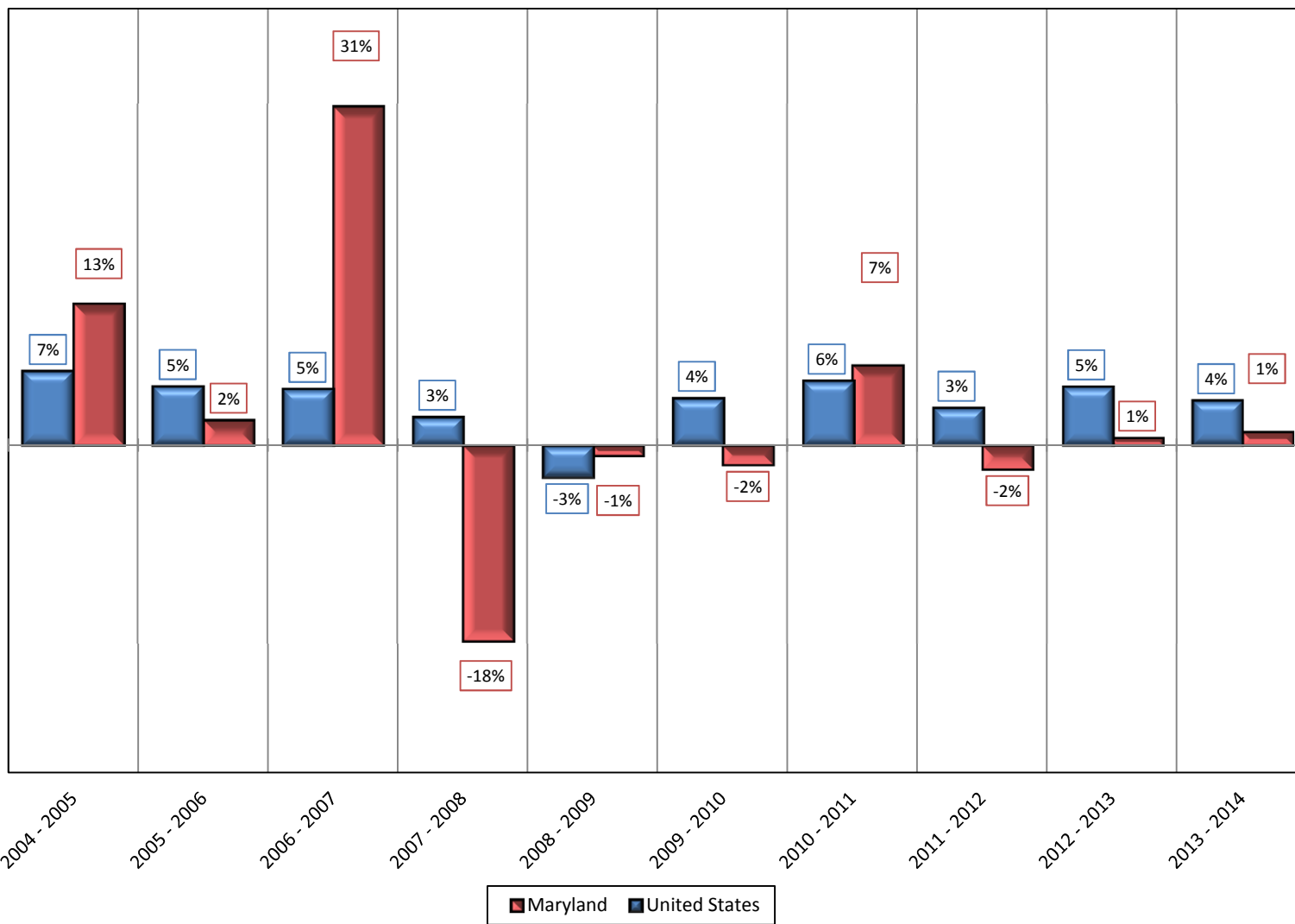


**Chart 1D.1 MARYLAND AND UNITED STATES
Percent Change in Mean
New Single Family Home Construction Value: 2005 - 2014**



SOURCE: U. S Department of Commerce. Bureau of the Census. Residential Construction Branch. 2015.
Prepared by MD Department of Planning. Planning Services. Socio Economic Projections and State Data Center. 2015.