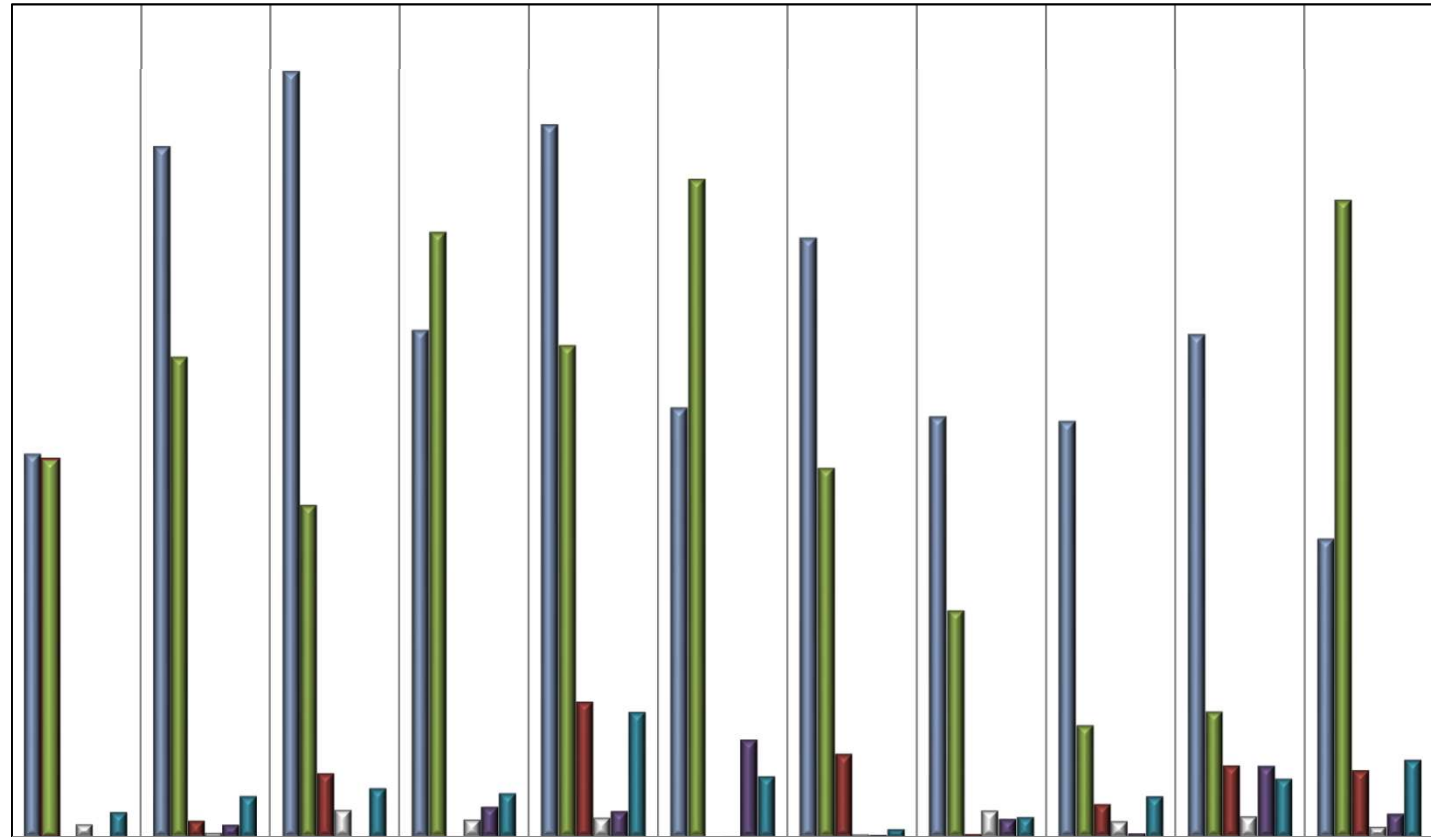


**Chart 2C. MARYLAND STATE PLANNING REGIONS
New Multi - Family Housing Units Authorized for Construction:
2017 - 2007**



	2017	2016	2015	2014	2013	2012	2011	2010	2009	2008	2007
■ BALTIMORE REGION	1,840	3,313	3,675	2,433	3,418	2,061	2,876	2,018	1,996	2,413	1,432
■ SUBURBAN WASHINGTON	1,814	2,306	1,595	2,903	2,360	3,156	1,774	1,090	538	605	3,057
■ SOUTHERN MARYLAND	-	81	308	6	651	-	400	16	160	345	322
■ WESTERN MARYLAND	62	22	131	85	94	4	14	128	77	101	52
■ UPPER EASTERN SHORE	-	62	2	149	127	470	13	90	20	344	114
■ LOWER EASTERN SHORE	124	201	238	214	601	294	42	100	199	283	373

SOURCE: U. S. Bureau of the Census. Economic Indicators Division. Residential Construction Branch. 2018.

Prepared by MD Department of Planning. Planning Services Division. 2019.