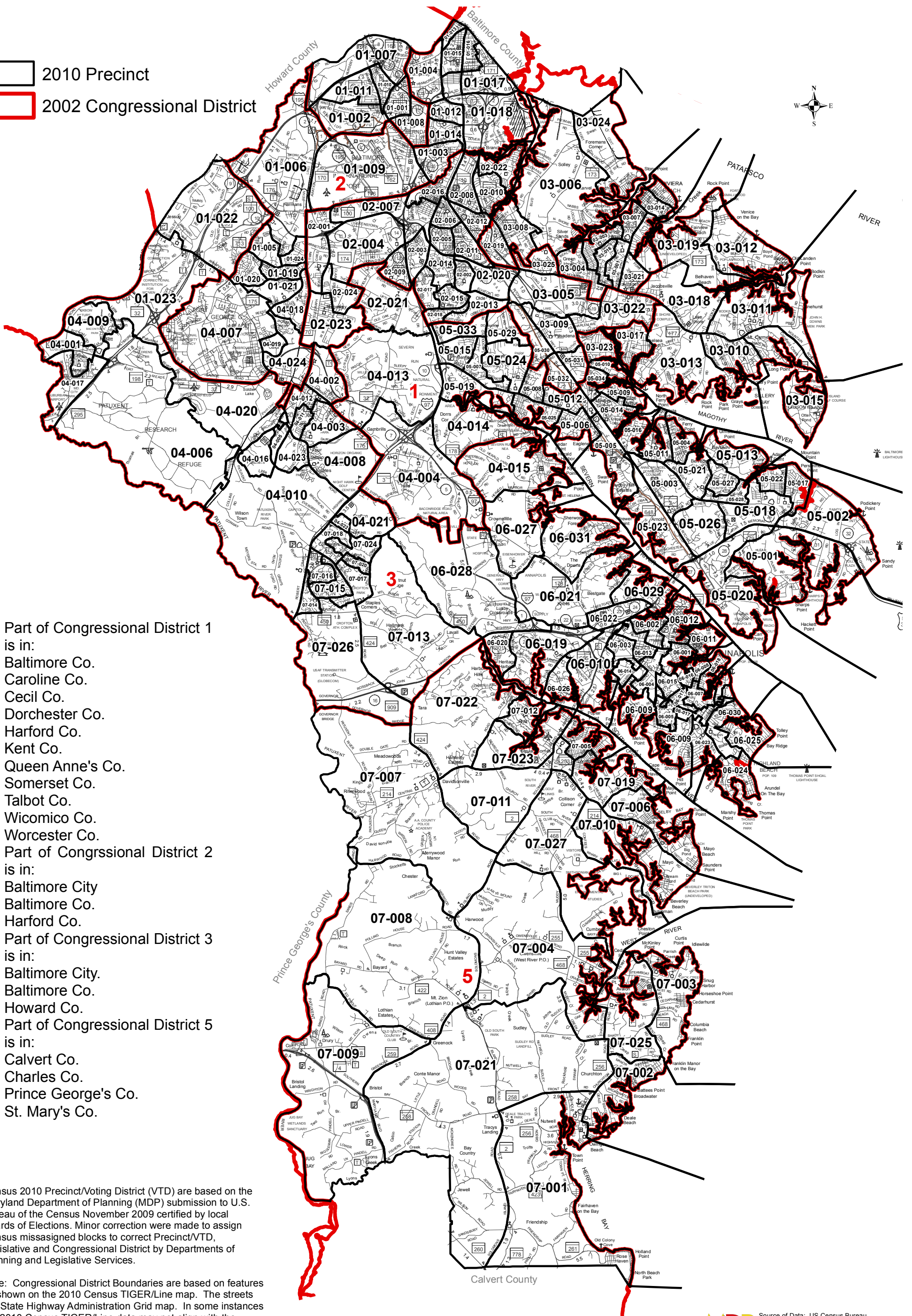


2010 Precincts & 2002 Congressional Districts

(Senate Bill 805 May 6, 2002)

Anne Arundel County, Maryland

- 2010 Precinct
- 2002 Congressional District



- Part of Congressional District 1 is in:
 - Baltimore Co.
 - Caroline Co.
 - Cecil Co.
 - Dorchester Co.
 - Harford Co.
 - Kent Co.
 - Queen Anne's Co.
 - Somerset Co.
 - Talbot Co.
 - Wicomico Co.
 - Worcester Co.
- Part of Congressional District 2 is in:
 - Baltimore City
 - Baltimore Co.
 - Harford Co.
- Part of Congressional District 3 is in:
 - Baltimore City
 - Baltimore Co.
 - Howard Co.
- Part of Congressional District 5 is in:
 - Calvert Co.
 - Charles Co.
 - Prince George's Co.
 - St. Mary's Co.

Census 2010 Precinct/Voting District (VTD) are based on the Maryland Department of Planning (MDP) submission to U.S. Bureau of the Census November 2009 certified by local Boards of Elections. Minor corrections were made to assign Census missassigned blocks to correct Precinct/VTD, Legislative and Congressional District by Departments of Planning and Legislative Services.

Note: Congressional District Boundaries are based on features as shown on the 2010 Census TIGER/Line map. The streets are State Highway Administration Grid map. In some instances the 2010 Census TIGER/Line data may not align with the SHA street grid.