

2010 Precincts & 2002 Congressional Districts

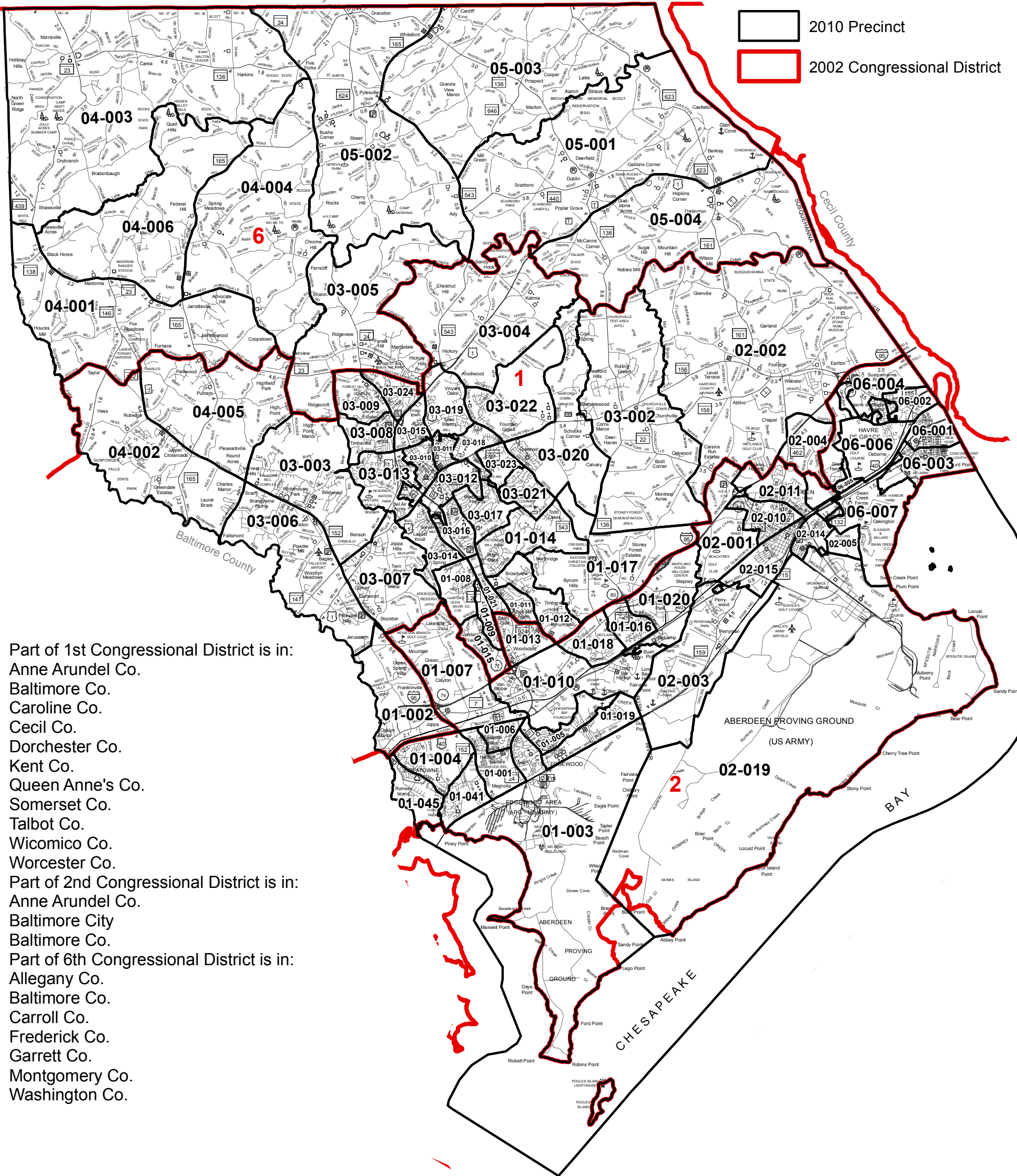
(Senate Bill 805 May 6, 2002)

Harford County, Maryland



Pennsylvania

2010 Precinct
 2002 Congressional District



Part of 1st Congressional District is in:
 Anne Arundel Co.
 Baltimore Co.
 Caroline Co.
 Cecil Co.
 Dorchester Co.
 Kent Co.
 Queen Anne's Co.
 Somerset Co.
 Talbot Co.
 Wicomico Co.
 Worcester Co.
 Part of 2nd Congressional District is in:
 Anne Arundel Co.
 Baltimore City
 Baltimore Co.
 Part of 6th Congressional District is in:
 Allegany Co.
 Baltimore Co.
 Carroll Co.
 Frederick Co.
 Garrett Co.
 Montgomery Co.
 Washington Co.

Census 2010 Precinct/Voting District (VTD) are based on the Maryland Department of Planning (MDP) submission to U.S. Bureau of the Census November 2009 certified by local Boards of Elections. Minor correction were made to assign Census missassigned blocks to correct Precinct/VTD, Legislative and Congressional District by Departments of Planning and Legislative Services.

Note: Congressional District Boundaries are based on features as shown on the 2010 Census TIGER/Line map. The streets are State Highway Administration Grid map. In some instances the 2010 Census TIGER/Line data may not align with the SHA street grid.